



## MISSION STATEMENT

*Raymond Engineering's mission is providing our clients the highest quality and long-term performance through engineered, cost-effective solutions.*

## INTRODUCTION TO RAYMOND ENGINEERING

Founded in 1992, Raymond Engineering has quickly become the leading roofing and waterproofing firm in the Southeastern United States. The company has grown from a locally based company to a dynamic and innovative full service, architectural/engineering firm with offices located in Georgia, South Carolina and North Carolina. We are committed to constantly investing in the future by providing value to clients through innovative project management, communications systems, comprehensive employee training programs and sustained leadership role in the industry.

Integrity

Innovation

Quality

People



### CERTIFICATIONS

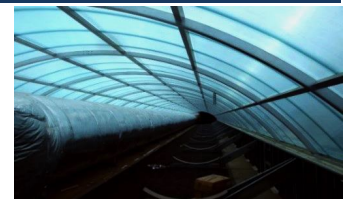
- Minority Business Entity
- SBA 8(a) Contractor
- GMSDC
- DOT
- SDVOSB

### NAICS CODES

- 236220
- 541310
- 541330
- 541350



## SERVICES



- |   |   |
|---|---|
| <ul style="list-style-type: none"> <li>• Design Services</li> <li>• Architectural Design Development</li> <li>• Building Envelope Design</li> <li>• Structural Design</li> <li>• Accessibility (ADA) Design</li> <li>• Construction Management</li> </ul> | <ul style="list-style-type: none"> <li>• Historic Preservation/Renovation Design</li> <li>• Value Engineering</li> <li>• Cost Estimating</li> <li>• Bridge Design</li> <li>• Evaluation and Testing Services</li> <li>• Specialized Services</li> </ul> |
|---|---|

