



STATE OF WASHINGTON
BOARD OF PILOTAGE COMMISSIONERS

FAQs – SEPTEMBER 1, 2020 TUG ESCORT IMPLEMENTATION

Where are tug escorts required on tank vessels (oil tankers, ATBs, towed waterborne vessels or barges between 5,000 and 40,000 deadweight tons)?

Tug escorts are required by law, 88.16.190 RCW, in Rosario Strait and connected waterways east, as further defined by the Board of Pilotage Commissioners in the Interpretive Statement (see visual on Figure 1).

Do escort tugs for the 5,000 to 40,000 deadweight ton tank vessels have to be tethered?

The regulations do not stipulate that the escort tug must be tethered. However, all escorts must be in close proximity for timely and effective response. Tug escorts may consider tethering particularly in narrow channels where shorter response time is required.

Do escort tugs for the 5,000 to 40,000 deadweight ton tank vessels have to be tractor tugs?

The current regulations only require that an escort tug be greater than 2,000HP. An escort tug for this class of tank vessel can have conventional propulsion but according to the BPC Interpretive Statement must be suitably configured, equipped, and manned for escort service.

What are the tug escort requirements for tank vessels carrying animal/vegetable oils?

The Board's definition of oil, as outlined in the Interpretive Statement, includes fats, oils, or greases of animal, fish, or marine mammal origin; vegetable oils, including oil from seeds, nuts, fruits, or kernels. A vessel carrying any of these types of oil is required to take a tug escort in Rosario Strait and connected waterways east.

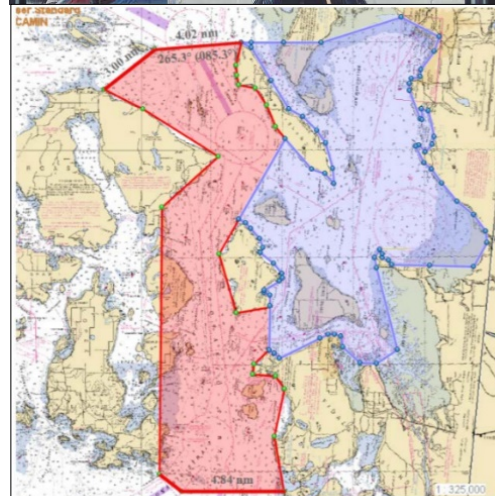


Figure 1 Rosario Strait (red) and Connected Waterways East (blue)

Do you have additional questions?

CONTACT

Jaimie Bever, Executive Director
BeverJ@wsdot.wa.gov
(206) 515-3887

or

VISIT OUR WEBSITE

www.pilotage.wa.gov