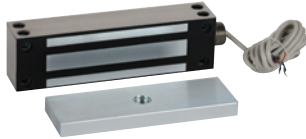


8380 GATEMAG® MAGNETIC GATE LOCK



- Up to 1500 lbs holding force
- No residual magnetism
- Weather-resistant stainless steel housing
- Versatile face or bottom mounting
- Built in RLS (remote lock status)
- Field selectable voltage 12/24VDC
- Throughbolt mounting
- 6-1/2' wire cable
- Conduit fitting 1/2" inside diameter, 3/4" outside diameter
- MOV surge protection
- Lifetime warranty
- cULus Listed

MFG #	SIZE	EZ #
8380	1-3/4" x 2-1/2" x 8-7/8"	080081



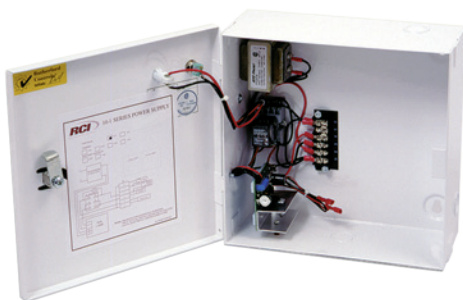
ELECTRIC CABINET LOCK



- Field selectable fail locked or fail unlocked assembly
- Field selectable dual voltage 12/24VDC operation
- Plated (rust-resistant) self adjusting steel locking pin assembly
- 440 lbs holding force
- Low energy consumption (184mA @ 12VDC, 90mA @ 24VDC)
- Includes hardware kit
- For sliding or swinging cabinet doors
- Elongated holes on tongue for adjustable mounting

MFG #	DESCRIPTION	SIZE	EZ #
3513	Electric Cabinet Lock	1-1/8" x 1-3/16" x 2-7/8"	100007

1 AMP POWER SUPPLIES FOR ELECTRIC STRIKES



- Instant unlock upon AC failure
- Filtered & regulated DC output
- Short circuit protection
- Adjustable output voltage
- Fuse protection
- Optional battery backup and time delay
- UL listed
- Size: 10-1/4" x 10-1/4" x 4"

MFG #	DESCRIPTION	OUTPUT	EZ #
1012NR 1A	No Relay Power Supply	12VDC	069088
1024NR 1A	No Relay Power Supply	24VDC	069089