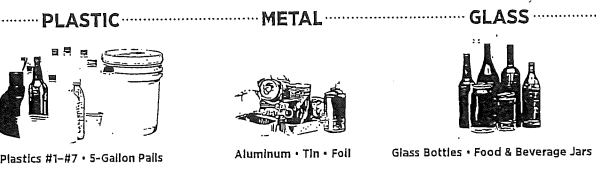


# ZERO-SORT® RECYCLING

TOSS ALL CLEAN & EMPTY RECYCLABLES INTO THIS CONTAINER



**VERMONT STATE LAW DISPOSAL BANS**

<b>Paints &amp; Stains, Varnish, Thinner</b>	<b>Tires</b>	<b>Waste Oil &amp; Filters</b>	<b>Recyclables</b>
Effective July 1, 2015			Effective July 1, 2015
<b>Mercury-Added Products</b>	<b>Electronics</b>	<b>Organics (Compostable Materials)</b>	
Effective July 1, 2016		Effective July 1, 2020	Effective July 1, 2020
<b>Certain Batteries</b>	<b>Appliances (White Goods)</b>	<b>Dangerous Wastes</b>	
			Keep these items out of the trash and attend for details on recycling and alternative disposal options.

### FREQUENTLY ASKED QUESTIONS

**What is Zero-Sort® Recycling?**  
Zero-Sort Recycling is Casella's state-of-the-art process which enables paper, cardboard, plastic, glass, and metal to be collected together in one bin eliminating the need for you to separate recyclables.

**Can I throw trash and recyclables into my Zero-Sort Recycling bin?**  
No, your Zero-Sort Recycling bin is for Zero-Sort recyclables only. Items that can't be recycled should be tossed into your trash bin.

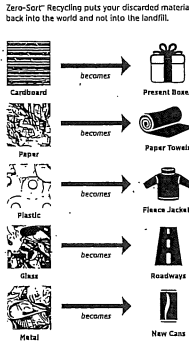
**Can I put grocery bags into my Zero-Sort bin or place recyclables in plastic bags?**  
NO. Plastic bags of any kind are not accepted in Zero-Sort Recycling. To recycle grocery bags, please bring them to a participating grocery or retail store.

**How should I prepare my recyclables?**  
Recyclables should be rinsed clean of any food waste. Corrugated cardboard boxes should be broken down into 2' max pieces. Lids and caps can remain on empty plastic bottles. **DO NOT** tie newspaper or cardboard with twine.

**What type of metal can I recycle?**  
Aluminum and tin cans are acceptable. Pots, pans, and scrap metal such as automotive parts, motors, and appliances are **NOT ALLOWED**.

**What are large rigid plastics?**  
Items made of plastic which include, sleds, soda crates, laundry baskets, 5-gallon pails, plastic chairs, carts, toys, garbage cans, and general household items.

### GIVING RESOURCES NEW LIFE®

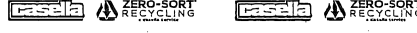


Learn more about the recycling process at [casella.com/ZeroSort](http://casella.com/ZeroSort)

### WELCOME TO CASELLA'S CURBSIDE TRASH AND ZERO-SORT® RECYCLING COLLECTION



This reference guide provides detailed information about your residential curbside trash and recycling collection service.



## ZERO-SORT® RECYCLING

No sorting on your end makes recycling quick and easy! Just focus on tossing all Zero-Sort recyclables into one bin and Casella takes care of the rest. Please **EMPTY** and **RINSE** all containers and flatten and break down cardboard boxes.

**CARDBOARD/PAPER**

- Corrugated Cardboard (every outside layer)
- Boxboard and Paper Cartons (dry-food boxes, cereal, paper bags, egg, milk, and juice cartons)
- File Folders and Office Paper (all sizes)
- Newspaper (all sections, inserts)
- Mail and Greeting Cards (junk mail, envelopes)
- Magazines and Photo Books (catalogs, soft cover books)

**PLASTIC**      **METAL**      **GLASS**

- Plastic Containers (#1-#7)
- Large Rigid Plastics (5-gallon pails, laundry baskets)
- Empty Metal and Aseptic Cans (beverages, tin, foil)
- Glass Bottles (food jar, beverage)

**NOT ACCEPTED:** Plastic bags or wrapping, window glass, mirrors, light bulbs, dishes, pyrex or other heat treated glass, ceramics, paper towel, facial tissue, styrofoam, recyclables containing food waste, paints, oils, hazardous material, needles, syringes, VCR tapes, CDs/DVDs, scrap metal, pots, pans, batteries, hard-cover books, clothing/textiles, wood/lumber, yard trimmings, 3-ring/spiral notebooks

Our commitment to our customers is to ensure the highest quality of service in the industry for all of your waste and recycling needs, and to continually evaluate your services, recommending better alternatives where applicable based on new technology, alternate disposal methods, or changes in regulatory requirements.

For information about Residential Curbside Terms and Conditions, visit [casella.com/residential-terms](http://casella.com/residential-terms)

## who

Vermont

- Households/Residents
- 501c3 Charities
- School Districts
- Small Businesses (10 or fewer employees)
- Anyone dropping off (7) or fewer electronic devices.

Question:

Can my waste hauler or curbside collection program take my electronic waste?

Answer:

Yes, if they offer that service, but electronic waste cannot go in your regular recycling bin. Also, they may charge you for transportation costs and for items other than those listed on the next panel.

## what

**Computers** (such as desktops, all-in-one computers, laptops, notebooks, netbooks, and tablets)



**Computer Monitors** (any type, such as CRTs, flat panel displays, LCD displays, plasma displays)



**Televisions**

(any type including consoles, portable, flat panel, and plasma display TVs)

**Printers** (most types including multi-functional machines - does not include floor-standing models)



**Computer Peripherals** (items sold exclusively for input or output to a computer such as a mouse, keyboard, scanner, external hard drive, modem, computer speakers, etc.)



## where

Take your computers, monitors, printers, televisions, or computer peripherals to any Vermont e-cycles location for free recycling. Permanent collection locations are available across the state.

For a list of free locations

Visit: [www.vtecycles.org](http://www.vtecycles.org)  
Or call: 1-855-6-ECYCLE

Question:

When does the E-Cycles program end?

Answer:

It doesn't! You can take your electronic devices listed to ANY of the permanent collection locations year-round.

**Vermont e-cycles**  
A program of the VERMONT Department of Environmental Conservation

[www.vtecycles.org](http://www.vtecycles.org) • 1-855-6-ECYCLE • [www.vtecycles.org](http://www.vtecycles.org) • 1-855-6-ECYCLE

## important

### PROTECT YOUR PERSONAL DATA

The security of any personal data or information (such as social security number, tax or banking, business records, or personal identification, etc.) is the sole responsibility of the owner of the electronic device being dropped at a Collection Location for recycling.

Collection locations and the State of Vermont cannot guarantee the security of any data stored on hard drives, printer or copier memories, or other data storage devices which are collected and stored prior to final recycling. Please take all precautions to secure your data before recycling.

DO: Use a specialty "Disk Wiping Software" that repeatedly cleans and rewrites the hard drive to destroy the drive.

DON'T: Simply delete files and reformat your hard drive. This does not destroy all the data.

DO: Find a reputable vendor to remove your hard drive or do it yourself and destroy it. The best way to destroy a hard drive is to hammer a nail through it in several places. Deeply scratching the face can also cause enough damage to make it unreadable. Bring it to a professional recycler for destruction.

DON'T: Bring your electronic device to a Collection Location without removing and destroying your hard drive.

DO: Treat your printers and external data devices with the same care. Some may have a hard drive that needs to be destroyed as well.

To learn more about data security and how to remove personal information visit [www.vtecycles.org](http://www.vtecycles.org) or call the toll free hotline: 1-855-6-ECYCLE



Question:

By law, what waste electronic devices cannot be thrown in the regular trash or in a recycle bin?

Answer:

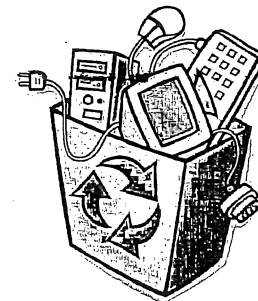
**Banned Electronic Devices, (whether from businesses or households):**

- Computers, printers, and computer peripherals
- Televisions & computer monitors
- Personal electronics (such as personal digital assistants and personal music players)
- All telephones (including cell phones), answering and fax machines
- Video cassette recorders (VCRs), digital versatile disc (DVD) players, digital converter boxes and stereo equipment
- Power Supply cords (used to charge electronic devices)

**Vermont e-cycles**  
A program of the VERMONT Department of Environmental Conservation

## FREE Electronics Recycling

YEAR ROUND—STATE WIDE



COMPUTERS

MONITORS

PRINTERS

TELEVISIONS

COMPUTER PERIPHERALS

**VERMONT**  
DEPARTMENT OF ENVIRONMENTAL CONSERVATION

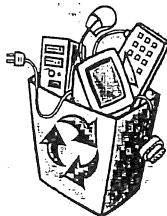
[www.vtecycles.org](http://www.vtecycles.org)  
1-855-6-ECYCLE



# Locations for Recycling

## Electronics, Batteries, Mercury Bulbs, Paint Products & Prescription Drugs

### Computers, Computer Peripherals, Monitor's, Printers & TVs



**Brattleboro:**

- Goodenough Rubbish Removal
- Staples
- WSWMD

**Jamaica:**

- Jamaica Transfer Station

**Dover:**

- Dover Transfer Station

**Readsboro:**

- Readsboro Transfer Station

**Whitingham:**

- Whitingham Transfer Station

**Westminster:**

- Rockingham/Westminster Recycling Drop-off

**Winhall:**

- Winhall Transfer Station

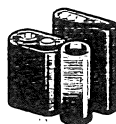
FREE drop-off from VT households/residents, 501c3 charities, school districts, & small businesses (10 employees or less).

### Batteries

Single-use Alkaline,  
Rechargeable & Cell Phones

**Brattleboro:**

- Brown & Roberts Ace Hardware
- Fireside True Value
- Leader Home Centers
- Staples
- WSWMD



### Mercury Bulbs

Fluorescent Tubes, HID,  
Circulines, U-Tube &  
Mercury Vapor

**Brattleboro:**

- Brown & Roberts Ace Hardware
- Fireside True Value
- WSWMD

**Newfane:**

- WW Building Supply

**Wilmington:**

- WW Building Supply



### Paint Products



**Program Products:** Latex, acrylic, water-based, alkyd, oil-based, enamels, deck coatings, floor paints, primers, sealers, undercoaters, stains, shellacs, lacquers, varnishes, urethanes, waterproofing concrete/ masonry/wood sealers and repellents, metal coatings, rust preventatives, and field and lawn paints.

**Brattleboro:**

- Brown & Roberts Ace Hardware\*
- Sherwin-Williams Paint Store\*
- Fireside True Value\*
- WSWMD

**Wilmington:**

- WW Building Supply\*

\*LIMIT: 5 cans per visit.

WSWMD limit: 10 cans per visit

Does not include aerosol paints (spray cans), art and craft paints, paint thinners, mineral spirits, solvents, auto/marine paints, and other materials.

### Safe Disposal of Prescription Drugs

**Brattleboro:**

- Brattleboro Police Dept. (No liquids or needles)

**Dover:**

- Dover Police Dept.

**Newfane:**

- Windham County Sheriff's Office (No liquids or needles)

**Wilmington:**

- Wilmington Police Dept. (No liquids or needles)

**Winhall:**

- Winhall Police Dept.





## Organics Drop-off for Transfer Stations

### What does the Universal Recycling Law (Act 148) say?

- Starting July 1<sup>st</sup>, 2017 facilities (i.e. transfer stations) that offer collection of solid waste **MUST** offer collection of food scraps to all customers including commercial haulers.
- These facilities **MAY CHARGE** customers (including residents, businesses, and commercial haulers) for the collection of food scraps.
- Haulers that offer solid waste collection are **NOT** required to offer organics services until July 1<sup>st</sup>, 2018 due to a recent change at the Vermont legislative level.
- Residents are **NOT** required to divert their organics from the landfill until July 1<sup>st</sup>, 2020.
- Residents may choose to backyard compost instead of using organics drop-off locations.
  - Residents who choose to backyard compost can throw meat, bones, & dairy into their household trash.
- Residents may also choose to feed food scraps to chickens or pigs. For feeding pigs see policy guidelines from the Agency of Natural Resources (attached).

### How does a town start?

- Towns with solid waste collection facilities are responsible for hiring a hauler to handle organics pick-up from transfer stations, and haulers may charge for these services.
- Towns/Facilities may also self-haul collected food scraps to WSWMD (Waste Hauler Permit may be required).
- If a facility's current hauler does not offer food scraps collection they may sub-contract with other haulers to offer the service.
- Haulers may choose to use either dumpsters or toter carts.
  - Note: When closing the facility dumpster lids should be chained down & secured, and carts should be brought into a shed. These efforts will deter bear problems.
- Collection containers should be clearly labelled and show acceptable material examples.
- Facilities/Towns should decide if they will charge residents for food scraps collection.
  - An example of fees may be \$1.00/5gal bucket of food scraps.

### What about the smell?

- Organics have the potential to smell rancid, but there are ways to combat this challenge.
- Food scraps should be collected, at minimum, once per week during the warmer months, and once every other week during the colder months.
- During the Summer months, it may be necessary to schedule 2-3 pick-ups/week.
- Place a bucket filled with a compostable carbon source (e.g. sawdust, dried leaves, shredded paper, dried grass clippings, etc.) next to the collection container.
  - Instruct patrons to cover their organics with a light dusting of the carbon source.
- Towns/facilities should work with their hauler to find a carbon source if one is desired.

### How can WSWMD help?

- Here is a list of ways we can assist you in developing a successful organics program;
  - On-site technical assistance to troubleshoot any issues that may arise, help with determining an effective layout for the organics site, develop effective signage for containers, workshops & "bin-side" visits to provide resident education

For further questions contact:

Kristen Benoit: [recycle@windhamsolidwaste.org](mailto:recycle@windhamsolidwaste.org) (802)257-0272 x113



#### Food Scraps

Bread/Rolls/Crackers

Rice/Pasta

Egg shells

Cheese/Diary

Cooked/Raw meats

Bones

Shellfish

Fruits & Vegetables

Coffee grounds/filter

Cooking oils & Fats

#### Non-Recyclable Cardboard/Paper

Tissues/Paper towels

Soiled cardboard

Wax cardboard

Wet/Damp paper

Paper egg cartons

Paper plates & Cups

Sugar/Flour bags  
(No plastic liners)

BPI Certified Compostable bags accepted!

#### **DO NOT COMPOST!!!**

Pet waste/Kitty litter, Milk/Juice cartons, Plastic bags, Plastic utensils, Aluminum foil, Trash, Glass, Styrofoam, Metal



**How can WSWMD help?**

- Here is a list of ways we can assist you in developing a successful organics program;
  - On-site technical assistance to troubleshoot any issues that may arise, help with determining an effective layout for the organics site, develop effective signage for containers, workshops & "bin-side" visits to provide resident education

For further questions contact:  
 Kristen Benoit: [recycle@windhamsolidwaste.org](mailto:recycle@windhamsolidwaste.org) (802)257-0272 x113

**Organics Drop-off for Transfer Stations**

**What does the Universal Recycling Law (Act 148) say?**

- Starting July 1<sup>st</sup>, 2017 facilities (i.e. transfer stations) that offer collection of solid waste **MUST** offer collection of food scraps to all customers including commercial haulers.
- These facilities **MAY CHARGE** customers (including residents, businesses, and commercial haulers) for the collection of food scraps.
- Haulers that offer solid waste collection are **NOT** required to offer organics services until July 1<sup>st</sup>, 2018 due to a recent change at the Vermont legislative level.
- Residents are **NOT** required to divert their organics from the landfill until July 1<sup>st</sup>, 2020.
- Residents may choose to backyard compost instead of using organics drop-off locations.
  - Residents who choose to backyard compost can throw meat, bones, & dairy into their household trash.
- Residents may also choose to feed food scraps to chickens or pigs. For feeding pigs see policy guidelines from the Agency of Natural Resources (attached).

**How does a town start?**

- Towns with solid waste collection facilities are responsible for hiring a hauler to handle organics pick-up from transfer stations, and haulers may charge for these services.
- Towns/Facilities may also self-haul collected food scraps to WSWMD (Waste Hauler Permit may be required).
- If a facility's current hauler does not offer food scraps collection they may sub-contract with other haulers to offer the service.
- Haulers may choose to use either dumpsters or toter carts.
  - Note: When closing the facility dumpster lids should be chained down & secured, and carts should be brought into a shed. These efforts will deter bear problems.
- Collection containers should be clearly labelled and show acceptable material examples.
- Facilities/Towns should decide if they will charge residents for food scraps collection. An example of fees may be \$1.00/5gal bucket of food scraps.

**What about the smell?**

- Organics have the potential to smell rancid, but there are ways to combat this challenge.
- Food scraps should be collected, at minimum, once per week during the warmer months, and once every other week during the colder months.
- During the Summer months, it may be necessary to schedule 2-3 pick-ups/week.
- Place a bucket filled with a compostable carbon source (e.g. sawdust, dried leaves, shredded paper, dried grass clippings, etc.) next to the collection container.
  - Instruct patrons to cover their organics with a light dusting of the carbon source.
- Towns/facilities should work with their hauler to find a carbon source if one is desired.

**Composting Organic Waste Project C.O.W.**  
 Windham Solid Waste Management District

<u>Food Scraps</u>	<u>Non-Recyclable Cardboard/Paper</u>
Bread/Rolls/Crackers	Tissues/Paper towels
Rice/Pasta	Soiled cardboard
Egg shells	Wax cardboard
Cheese/Diary	Wet/Damp paper
Cooked/Raw meats	Paper egg cartons
Bones	Paper plates & Cups
Shellfish	Sugar/Flour bags (No plastic liners)
Fruits & Vegetables	Milk/Juice cartons (Remove plastic spouts)
Coffee grounds/filter	
Cooking oils & Fats	BPI Certified Compostable bags accepted!
Pet waste/Kitty litter	

**DO NOT COMPOST!!!**  
 Plastic utensils, Plastic bags, Aluminum foil, Trash, Glass, Styrofoam, Metal

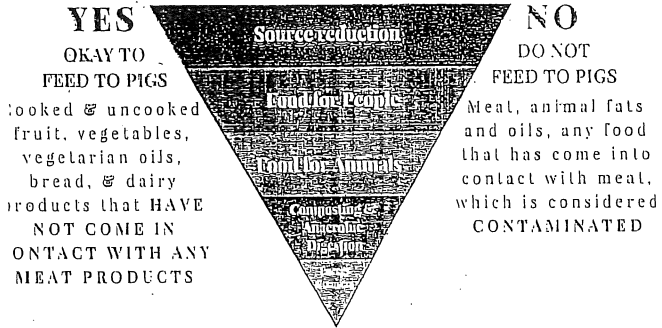


**FEEDING FOOD SCRAPS TO PIGS**

We all know food doesn't belong in the trash, but does it belong in pigs?



**Vermont Food Recovery Hierarchy**



**FEEDING CONTAMINATED FOOD TO PIGS MAY CAUSE ANIMAL ILLNESS AND/OR DEATH**

If you provide food scraps to pigs, contact the Animal Health Section at 802-828-1421 to establish good practices to prevent contamination.

To learn more visit:  
[www.recycle.vermont.gov](http://www.recycle.vermont.gov) or [www.agriculture.vermont.gov](http://www.agriculture.vermont.gov)