

## Phase 14: Tail Rotor installation

---

The Tail Rotor Assembly is a critical part and has been completely assembled and the tail rotor blades balanced before shipping.

All that the builder is required to do is fit it safely and then rig the tail rotor control system

### Parts and other components

PARTS	DESCRIPTION	CODE	QTY.	PACK
	Tail Rotor	CH6B_10.000.0.0	1	3

TOTAL PHASE 14 PARTS: 1

### Necessary tools

- Wrench 3/8"
- Wrench 7/16"
- Robinson Wire Twister tool

### Other necessary elements

- Safety wire
- Anticorrosion tape
- Tail Rotor Gear Box lubricant
- Special grease for TRGB spline

### Assembly order

#### Step 1- Installation of Tail Rotor to Main Tail Boom Tube



Fig. 1

## Phase 14: Tail Rotor installation

---

The female coupling, located in the rear of the Tail Rotor Drive Shaft, is splined to drive the TRGB.



Fig. 2

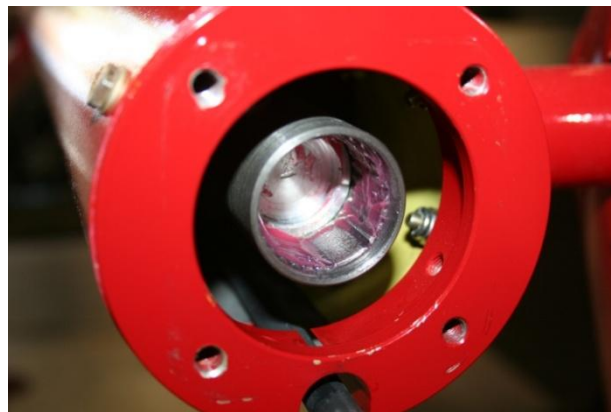


Fig. 3

It has a wide master spline to fit with the corresponding wide spline on the TRGB input shaft.



Fig. 4

There is an O ring to seal the splines.

## Phase 14: Tail Rotor installation

---

**NOTE**

Lubricant must be placed on both splines. CICARÉ recommends using multipurpose extreme pressure lithium grease, GRADE NLGI-2.

---

Install the Tail Rotor Gearbox to the Main Tail Boom Tube using AN4H-6A bolts and AN960-416 washers.

Lock wire the AN4H bolts.

### Step 2- Connection of the tail rotor control Push Pull Tube to the Tail Rotor



Fig. 5

Connect the TR control arm in the following order from top to bottom:

- A- Bolt AN3-10A
- B- Washer AN960-10L
- C- Rod end joint
- D- Washer AN960-10
- E- TR control Arm
- F- Washer AN960-10L
- G- Nut AN364-1032

Check that the tail boom push/pull tube is not catching on the tail boom rear bulkhead.

Check that the control arm/push-pull tube attach bolt is not touching the TRGB lower oil plug.

## Phase 14: Tail Rotor installation

---

### Step 3- Fabrication and installation of 3M Anti Erosion Tape

Tail rotor anti-erosion tape is fitted to enable protection of the composite blades in dusty operating conditions. It should be used to ensure longevity and ongoing balance of the Tail Rotor blades.

The tail rotor blades can be used without the tapes fitted.

The tape has a dotted line on where it has to be cut.

Stick Anti Erosive Tape evenly at the leading edge of the Blades. This tape protects the blades from erosion from elements in the air.

The Tail Rotor Blade must be clean and dry before installation.



Fig. 6

---

#### **WARNING**

Inspect the tail rotor blade tapes prior to each flight.

Remove the tape if it appears to be detaching from the blade as if it comes off in flight there will a severe vibration in the helicopter.

Land immediately if this occurs.

If in doubt, remove both tapes and renew on return to base.

---

## Phase 14: Tail Rotor installation

---

### Step 4- Fabrication of Tail Rotor Protractor Adapter

If required, this tool it will be used in the rigging the helicopter to measure the angle of attack of the tail rotor blades.

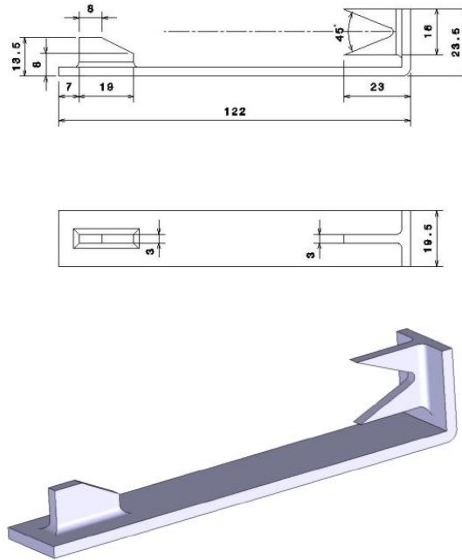


Fig. 7

### Step 5- Safety lock wiring

Refer to the introduction of this manual for this procedure.