

## ORO 2.5 MOTOR REPAIR & REPLACEMENT

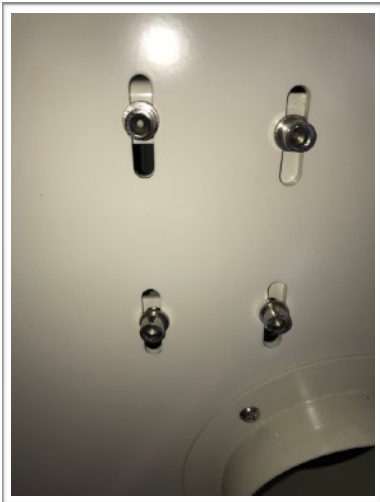
### **ORO 2.5 MOTOR REPAIR & REPLACEMENT**

IN THE EVENT THAT YOU HAVE MOTOR PROBLEMS OR NEED TO REPAIR OR REPLACE A MOTOR IN THE **PHOENIX ORO SERIES ROASTERS** HERE ARE SOME INSTRUCTIONS FOR REPAIRS OR REPLACEMENT:

IF YOU BEGIN TO GET EXCESSIVE VIBRATION WHILE DRUM IS TURNING OR IT INCREASES AS YOU ADJUST DRUM SPEED YOU MAY NEED TO:

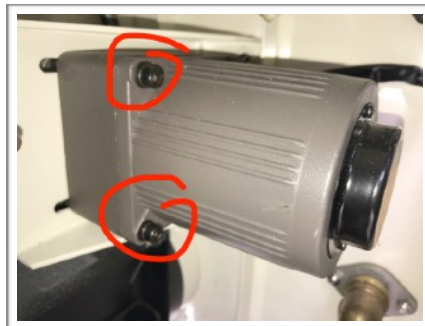
1. **TIGHTEN BELT FOR DRUM MOTOR. THIS CAN BE DONE BY LOOSENING THE 4 BOLTS ON OUTSIDE OF BODY JUST A TURN OR TWO THEN PUSHING DOWN ON MOTOR FROM INSIDE MOTOR ROOM AND TIGHTEN.**

**BOLTS TO LOOSEN MOTOR:**



2. IN SOME RARE CASES WE HAVE NOTED MANUFACTURER OF DRUM MOTOR ON THE 2.5 & 4 MODEL HAVE FAILED TO ADD ENOUGH GREASE TO THE GEAR HEAD. IN SUCH A CASE YOU CAN LOOSEN THE SAME BOLTS ON SIDE AND REMOVE THE MOTOR AND BRACKET TOGETHER & REMOVE THE MOTOR SHAFT FROM BRACKETS BY REMOVING THE 4 LONG SCREWS THAT HOLD MOTOR TO BRACKET AS SEEN IN ILLUSTRATION #2. NEXT SEPARATE SHAFT FROM MOTOR AND ADD HIGH TEMPERATURE GREASE TO SHAFT (ILLUS.#3)

ILLUS: # 2



ILLUS. # 3



3. IF THE ABOVE REPAIRS DO NOT FIX ISSUE YOU CAN REPLACE DRUM MOTOR AND OR DRUM SPEED CONTROL DEVICE. THE DRUM SPEED CONTROL DEVICE HAS A SNAP ON DIRECT ELECTRIC CONNECTION WITH DRUM MOTOR. **BE CAREFUL TO NOT DAMAGE**

## ORO 2.5 MOTOR REPAIR & REPLACEMENT

CONNECTION WHEN REMOVING ( YOU MAY WISH TO REPLACE DRUM SPEED CONTROL FIRST TO SEE IF THAT FIXES THE PROBLEM. (ILLUS # 4):

ILLUS. # 4



IF REPLACING DRUM SPEED CONTROL DOES NOT CORRECT ISSUE YOU CAN FOLLOW THE SAME PROCEDURES ABOVE TO REMOVE MOTOR FROM ROASTER AND REMOVE FROM BRACKET AND THEN REPLACE WITH A NEW MOTOR. ( IT MAY BE BEST TO CHECK SHAFT AND LEASE AS NEEDED BEEFIER REASSEMBLY OF MOTOR TO BRACKET)

### RECAP ON REMOVING MOTOR FROM ROASTER:

- (1) REMOVE 4 BOLTS ON BRACKET
- (2) REMOVE THE 4 SCREWS TO SEPARATE BRACKET FROM MOTOR
- (3) IF NEEDED GREASE SHAFT
- (4) PLACE ALL PARTS

