



Level 4-SAMPLE ANSWER KEY

National Federation of Music Clubs – Festival Theory Test SAMPLE - LEVEL 4 - SAMPLE

Name: _____ Date: _____ ID: _____ Rating: _____



(Superior 90-100, Excellent 80-89.5, Satisfactory 70-79.5, Fair 60-69.5, Needs Improvement <60)

1. Draw a whole note on the line or space that matches the letter named below each measure. (3)
-1/2 pt. each measure

F B E C D A

2. Write the name of the note below the measure. (3)
-1/2 pt. each measure

_____ _____ _____ _____ _____ _____

A G F B E C

3. On the staff below, draw the notes or rests as instructed below each measure. Apply the stem rule. (6)
-1 pt. each measure

Two Eighth notes
on F & C
(Use flags)

Quarter note
on B \flat

Two Eighth
notes on D
(Use beams)

Half
rest

Eighth
rest

Dotted half
note on G

Any of the notes shown are correct. If note is placed correctly, but stem, flag, dot or beam is wrong, - 1/2 pt. total in that measure.

4. Draw each interval named below each measure going **DOWN** from the given note. (6)
-1 pt. each measure



*Question #4 – Intervals may go up or down on the NFMCA test. (FYI)

3rd 6th 4th 7th 5th 6th

5. Circle the Major 3rd: -2 pts.(2)

6. A Major 3rd = 4 half steps -1 pt.(1)
spelled as a skip.

7. Circle the minor 3rd. -2 pts.(2)

8. A minor 3rd = 3 half steps -1 pt.(1)
spelled as a skip.

Level 4-SAMPLE ANSWER KEY

SAMPLE - Level 4 - Page 2

9. Write counts below each note or rest in each measure as you would count them. **-1 pt. each measure** (4)




Musical staff with 4/4 time signature. The staff contains four measures of music. The notes and rests are: Measure 1: quarter, eighth, eighth, quarter; Measure 2: quarter, quarter, quarter, quarter; Measure 3: quarter, quarter, quarter, quarter; Measure 4: quarter, quarter, quarter, quarter. Below the staff, the counts are written: 1 - 2 3 & 4 & 1 - 2 3 & 4 1 2 & 3 4 1 2 3 4

10. Draw bar lines where they are needed. **-1 pt. each bar line** (3)



Musical staff with 3/4 time signature. The staff contains four measures of music. The notes and rests are: Measure 1: quarter, quarter, quarter; Measure 2: quarter, quarter, quarter; Measure 3: quarter, quarter, quarter; Measure 4: quarter, quarter, quarter. No bar lines are present.

11. Write the top number of the time signature in each measure below. **-1 pt. each measure** (4)



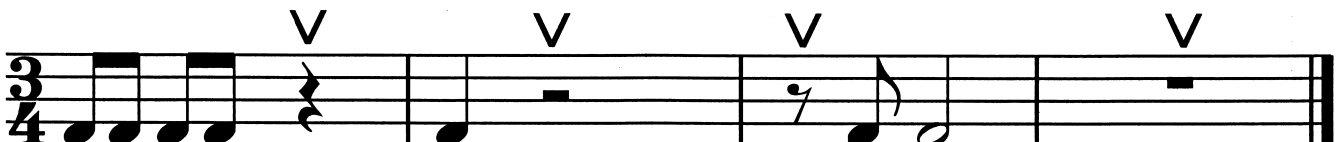
Musical staff with 4/4 time signature. The staff contains four measures of music. The notes and rests are: Measure 1: quarter, quarter, quarter, quarter; Measure 2: quarter, quarter, quarter, quarter; Measure 3: quarter, quarter, quarter, quarter; Measure 4: quarter, quarter, quarter, quarter. Above the staff, the top numbers of the time signatures are written: 3, 4, 5, 2.

12. Complete each measure by drawing ONE NOTE where indicated below each arrow. **-1 pt. each measure** (4)



Musical staff with 4/4 time signature. The staff contains four measures of music. The notes and rests are: Measure 1: quarter, quarter, quarter, quarter; Measure 2: quarter, quarter, quarter, quarter; Measure 3: quarter, quarter, quarter, quarter; Measure 4: quarter, quarter, quarter, quarter. Below the staff, four arrows point to the empty space in each measure.

13. Complete each measure by drawing ONE REST where indicated below each arrow. **-1 pt. each measure** (4)
Do not draw dotted rests.



Musical staff with 3/4 time signature. The staff contains four measures of music. The notes and rests are: Measure 1: quarter, quarter, quarter; Measure 2: quarter, quarter, quarter; Measure 3: quarter, quarter, quarter; Measure 4: quarter, quarter, quarter. Below the staff, four arrows point to the empty space in each measure.

Level 4-SAMPLE ANSWER KEY

Name: _____



14. Write ONE NOTE that equals the total number of beats for each math problem.

A. + =
 note

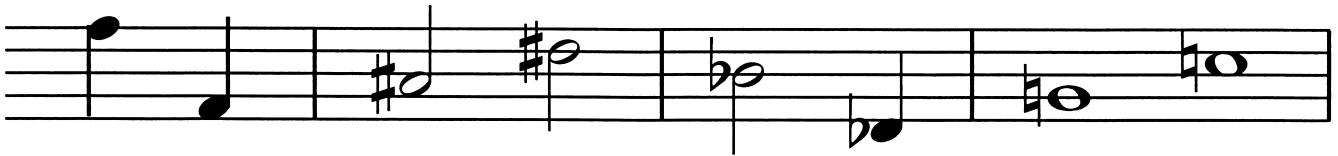
B. + + + =
 note

-1 pt each blank ⁽²⁾

15. On the staff below:

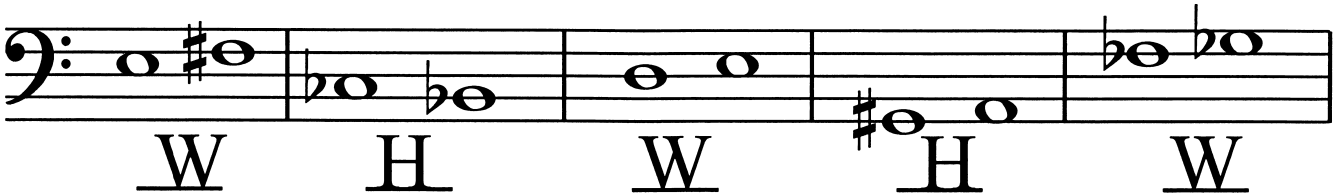
- A. Draw a STEM on each note in measure ONE.
- B. Draw a SHARP in front of each note in measure TWO.
- C. Draw a FLAT in front of each note in measure THREE.
- D. Draw a NATURAL in front of each note in measure FOUR.

-1 pt each stem ⁽²⁾
-1 pt each sharp ⁽²⁾
-1 pt each flat ⁽²⁾
-1 pt each natural ⁽²⁾



16. Label each pair of notes as Whole (W) or Half (H) step.

-1 pt each blank ⁽⁵⁾



-1/2 pt each blank

17. Write the order of sharps: F C G D A E B ^(3.5)

18. Write the order of flats: B E A D G C F ^(3.5)

19. On the grand staff below:

- A. Draw the treble clef and the bass clef. **Clefs must be recognizable.**
- B. Draw the brace and the double bar line.
- C. Mark the half steps on each staff where they occur in a major scale.
- D. Draw sharps or flats as needed to make the F major scale.

-1 pt each clef ⁽²⁾
-1 pt each ⁽²⁾
-1 pt each slur ⁽⁴⁾
-2 pts each staff ⁽⁴⁾





Level 4-SAMPLE ANSWER KEY

SAMPLE - Level 4 - Page 4

20. On the staff below:

A. Name each major key signature below each measure.

-1 pt each name (6)

B. After each key signature in each measure, draw a whole note on tonic.

-1/2 pt each tonic (3)

Any octave is OK for tonic.

C Major **E** Major **G** Major **A** Major **F** Major **D** Major

21. Circle a C Major root position chord in the example below. Circle only one chord.

-2 pt for the chord

(2)

If more than 1 chord is circled, then -2 pts.

22. Write the letter of the correct definition in the blank beside each musical term.

-1 pt per blank (12)

D *Allegro*

A. three or more tones sounding together in thirds

B *Andante*

B. a walking *tempo*

G *Adagio*

C. an interval of three half steps, spelled as a skip

F *tempo*

D. a fast *tempo*

A chord

E. a three-note chord

J brace

F. the speed of steady beats, moving in time

K Major 3rd

G. a slow *tempo*

I beam

H. This is formed when the treble & bass staves are joined together by a bar line, brace and a double bar line; used in piano music

C minor 3rd

I. joins two eighth notes that divide one beat

L Major triad

J. a bracket connecting the treble and bass staff in a grand staff

H Grand staff

K. an interval of four half steps, spelled as a skip

E triad

L. a triad with four half steps between the notes in the lower third and three half steps between the notes in the upper third