



# **Summer Villages**

of

## **Silver Sands & South View**

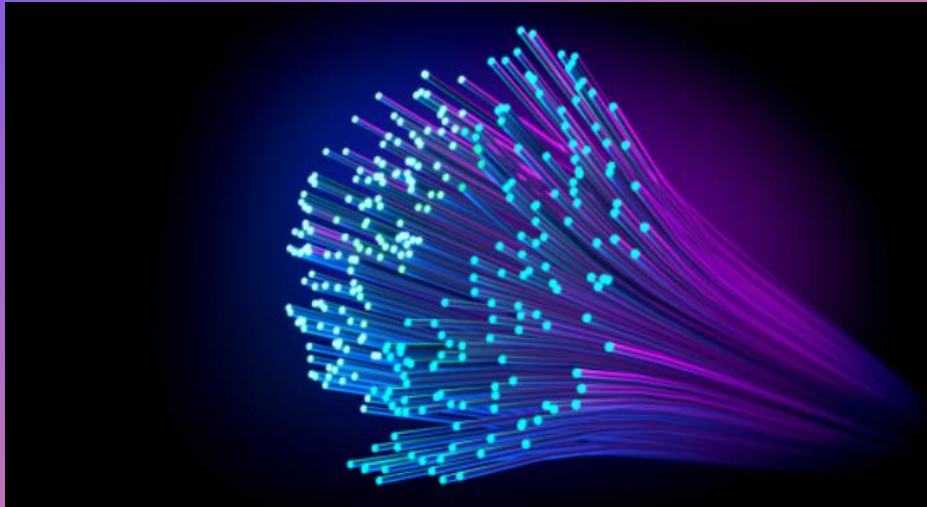
### **Fiber Projects**



+

•

○



**MISSING LINK INTERNET**

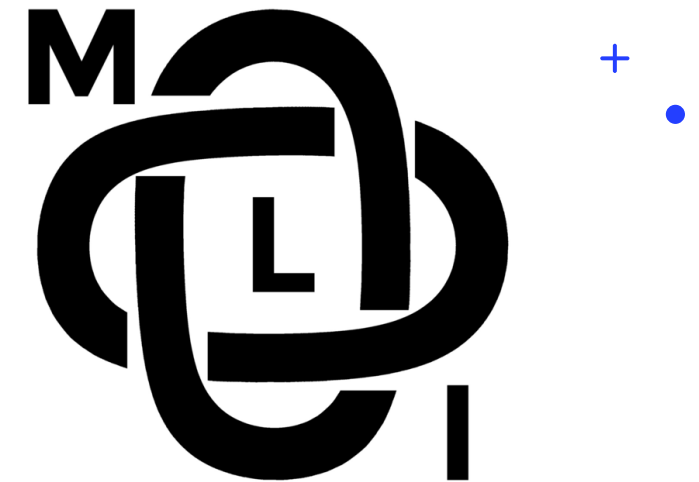
**1-855-887-5465**

[www.misslink.ca](http://www.misslink.ca)

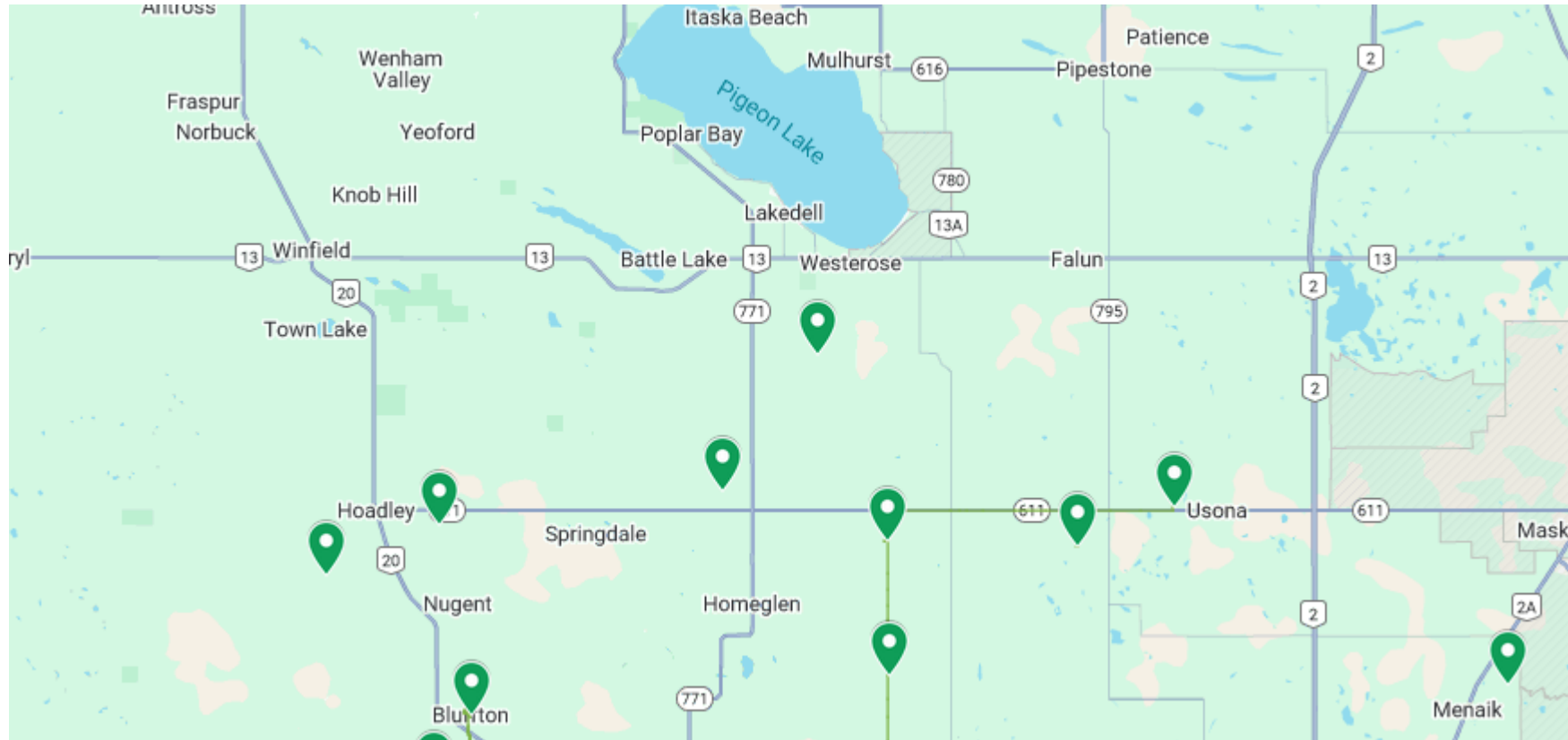
# Missing Link Internet

MLI has been a locally owned provider in the County's of Ponoka, Lacombe, Red Deer Clearwater, Camrose & Wetaskiwin since 2012, 2 owners both living in the county of Ponoka, Craig Bondy and Phil Swanson. Both having over 20 years of experience in the world of providing internet.

Currently the County of Ponoka has successful investments with Missing Link Internet in bringing wireless and fiber internet to county residents.



# MLI Map



[https://www.google.com/maps/d/u/2/edit?mid=1SNSNO\\_RDkQ5MInMiT4z70TsHNFs&usp=sharing](https://www.google.com/maps/d/u/2/edit?mid=1SNSNO_RDkQ5MInMiT4z70TsHNFs&usp=sharing)



# CURRENT INTERNET

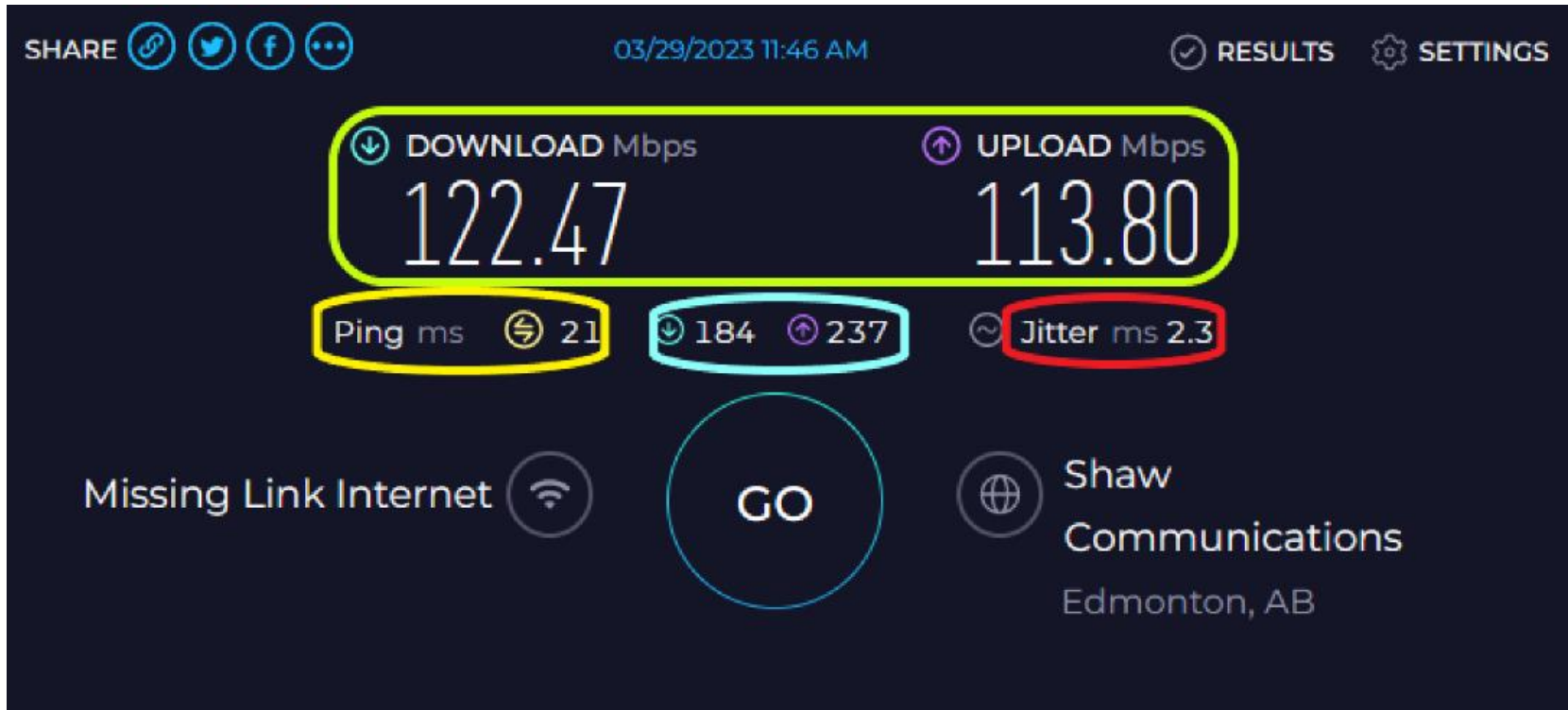
## Available Providers

Point to MultiPoint (PTMP), Fiber, Cellular, Satellite

- **Rogers** (Cellular)
- **Starlink** (Satellite, pretty much everywhere)
- **TELUS HUB** (Cellular)
- **Xplore / Xplornet** (PTMP & Satellite)

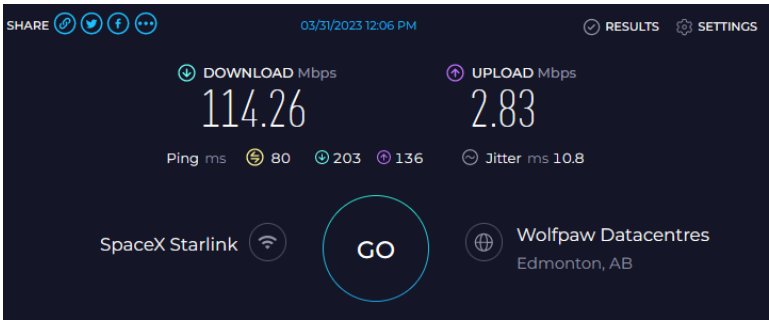
# Quick Compare

ISP	Speeds Mbps	Comparable package	Data	Notes
Rogers	50	\$60	500Gb	Mobile – geo locked
Starlink	20-180	\$140	Currently unlimited	Beta
MLI ( <b>NEW</b> )	100+	\$99.99	Unlimited	unlimited
Xplore	50-	\$99	“Unlimited”	has throttling in feeds, may limit based on use
TELUS	25	\$90 (\$70)	500Gb	Management policies



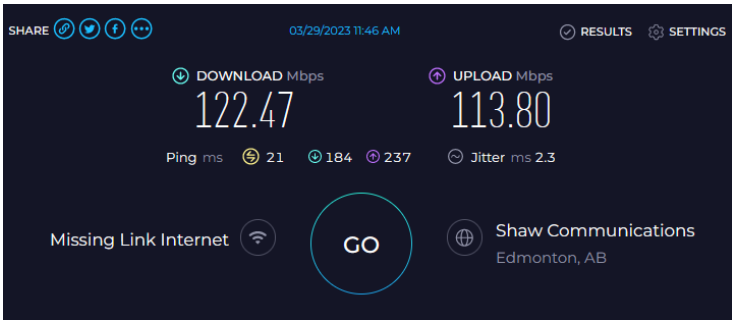
- **Speed** up / Down (higher the better)
- **Ping** Time for a packet of data to go from device to speed test site and back again (lower the better)
- **Latency** under load (wireless)  
this is very dependent on router quality, this is like a ping test under load down and up (lower the better)
- **Jitter** the consistency of pings during test (lower the better)





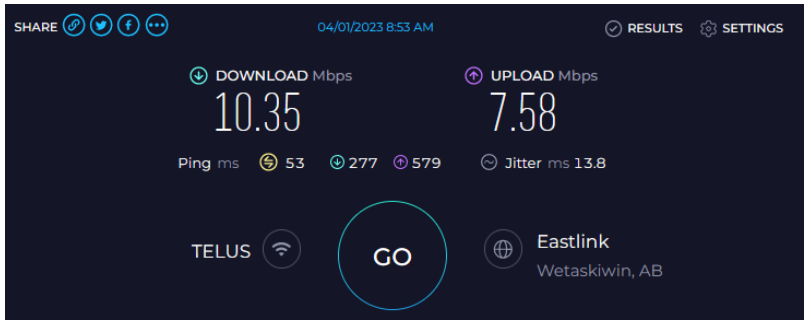
<https://www.speedtest.net/my-result/a/9172784058>

Starlink



<https://www.speedtest.net/my-result/a/9167859660>

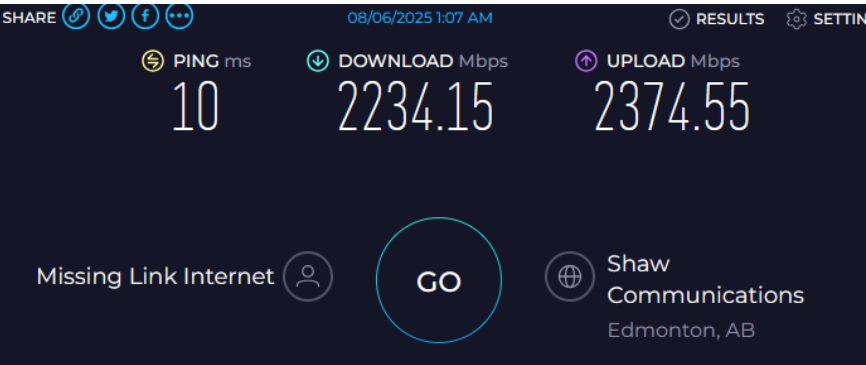
MLI Wireless Customer



<https://www.speedtest.net/my-result/a/9174846485>

TELUS HUB – in Rimbey

Phil's House fiber



<https://www.speedtest.net/result/d/ad600f35-4695-46a6-9832-5775b27fbcbf>

Rimbey TV - Fiber



A Newton's cradle with five silver spheres is visible in the background, slightly out of focus. The background has a purple-to-orange gradient.

# CURRENT MODELS

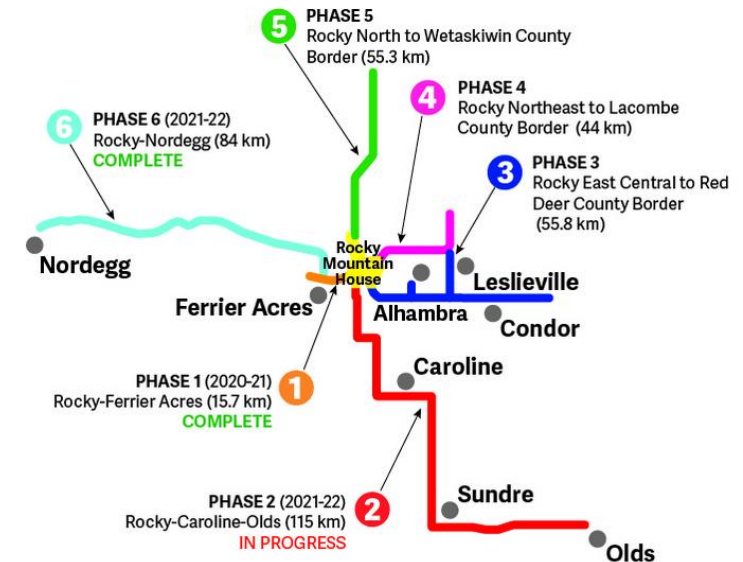
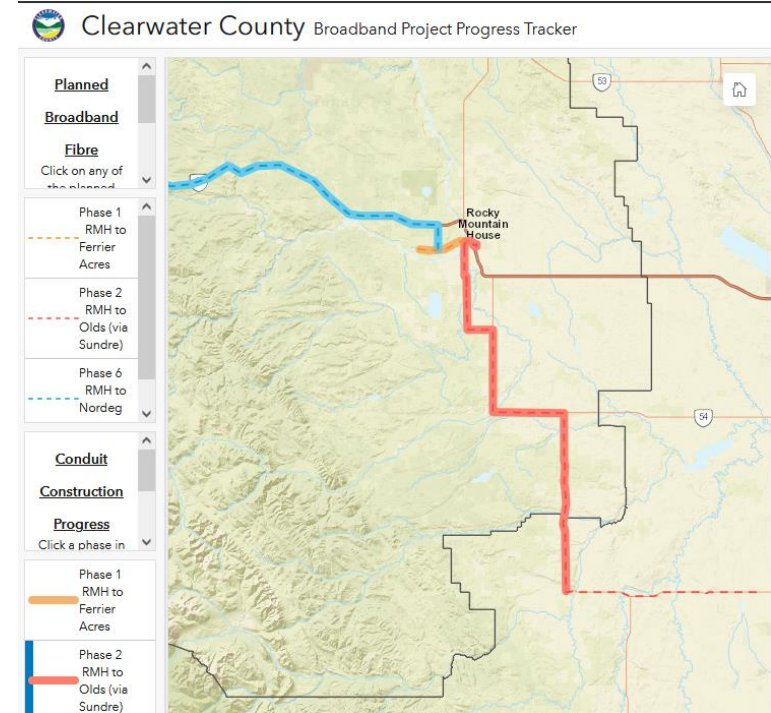
- County owned Backbone
- County owned Wireless/Fiber to the home
- County Supported networks
- Do nothing Counties



# County Owned Backbone

Clearwater County,  
Parkland County (wireless towers)

- A network is built as a transit / backbone throughout county.
- Open access
- County pays managing partner to operate and maintain network
- Retail ISP are expected to rent fiber or wireless from county and build out
- Basically, a Supernet type build
- Unless network gets to Calgary or Edmonton there is double transit fees



# County Owned to the Home

Red Deer County, Sturgeon County, Brooks, ~~O-Net~~ (Now TELUS)

- A network is built by the county to the home.
- Open access
- County pays managing partner to operate and maintain network
- Retail ISP pay to use network  
very poor margin
- A city type network on a larger scale and MUCH MORE \$



# County Supported Networks

## Ponoka

- A network is built by ISP (CCi, MLI)  
Preferably with grant funding
- Privately owned and managed
- County invests in company
- Networks are built in a timely fashion
- ISP pays back investment = **\$0 cost to county**



**MISSING LINK INTERNET**

# County Does Nothing

## Lacombe

- \$0 cost to build network
- ISP's will build as affordable, no incentive to build out
- Slow progress
- MLI has done some grant funded fiber builds in county
- Mainly wireless providers



**MISSING LINK INTERNET**

Netsetter Wireless

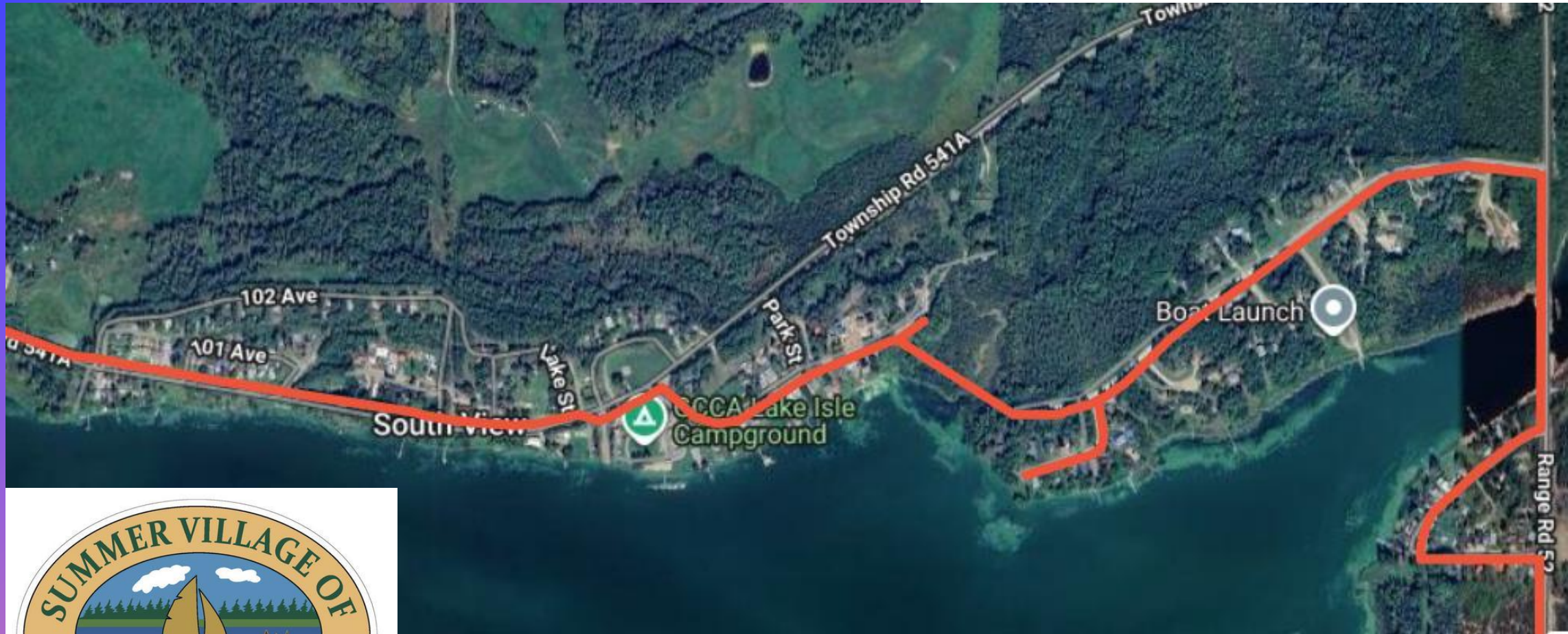
# Missing Link Internet

- Proven History credit record with Ponoka County – Wireless paid back, Fiber is being paid back
- Proven History with working with Federal and Provincial Governments successful on 6 grants, more soon to come.
- Grant applications with Municipality support have historically been better received.
- Local providers, invested in community. Started in 2012. 13 years ownership as Missing Link Internet, over 40 years of ISP experience total.
- Already a large presence in Central Ab.
- Over 600km of fiber
- Serving Rimbey, Gull lake, Sylvan Lake, Benalto, Bluffton, Eckville, Usona and manage Clearwater Broadband Foundation Fiber (currently building Pine Lake)
- As well as over 180 wireless broadcast locations throughout Ponoka, Lacombe, Red Deer, Clearwater, Wetaskiwin, and Camrose Counties.
- We currently manage over 2,300 customers
- Our motto has always been to provide for the under serviced areas, that is why we started Missing Link Internet
- We are capable and proven!











+



# THANK YOU

- Craig Bondy / Phil Swanson
- [admin@misslink.ca](mailto:admin@misslink.ca)
- [www.misslink.ca](http://www.misslink.ca)

