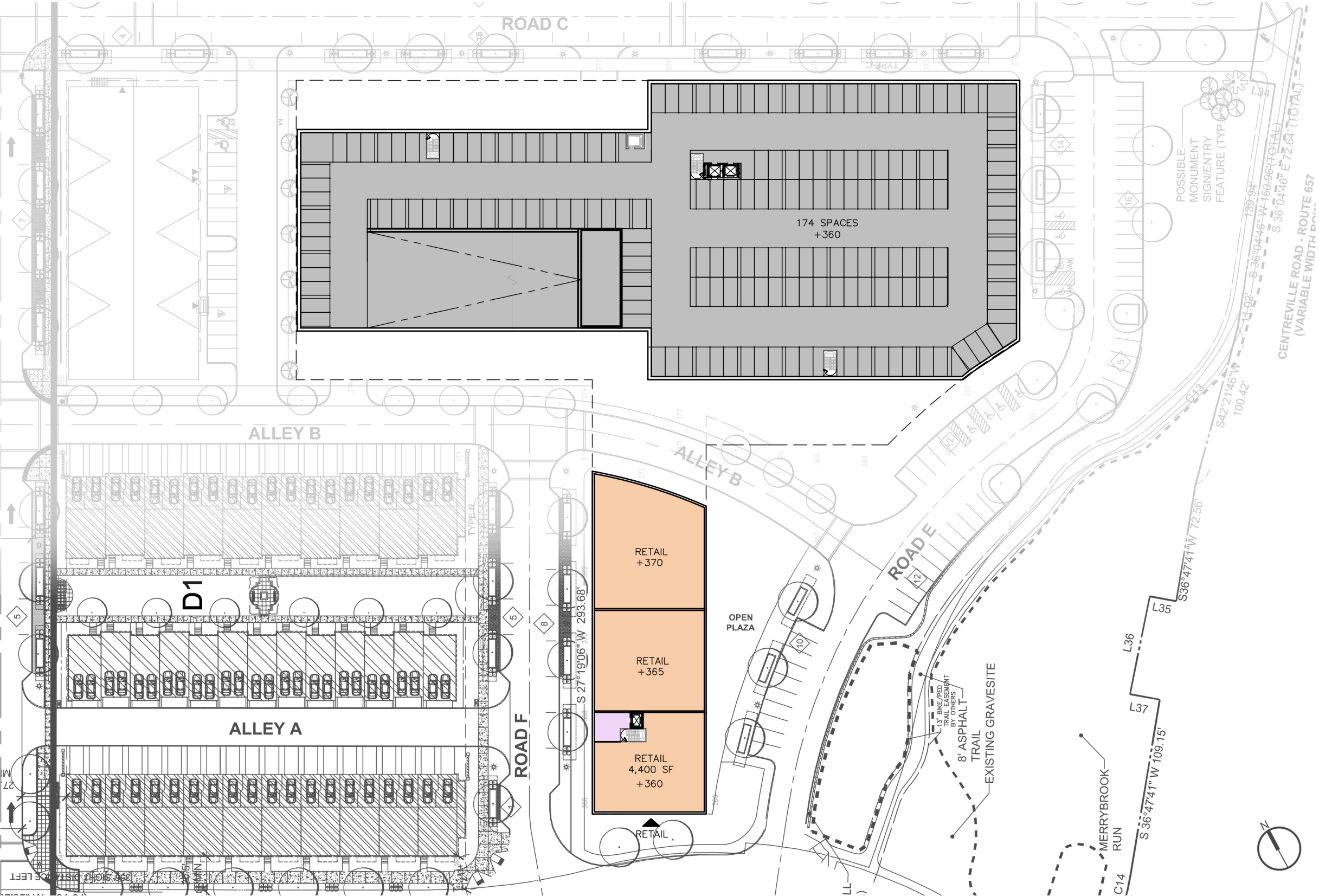




ARROWBROOK CENTRE D2 MULTI-FAMILY RESIDENTIAL

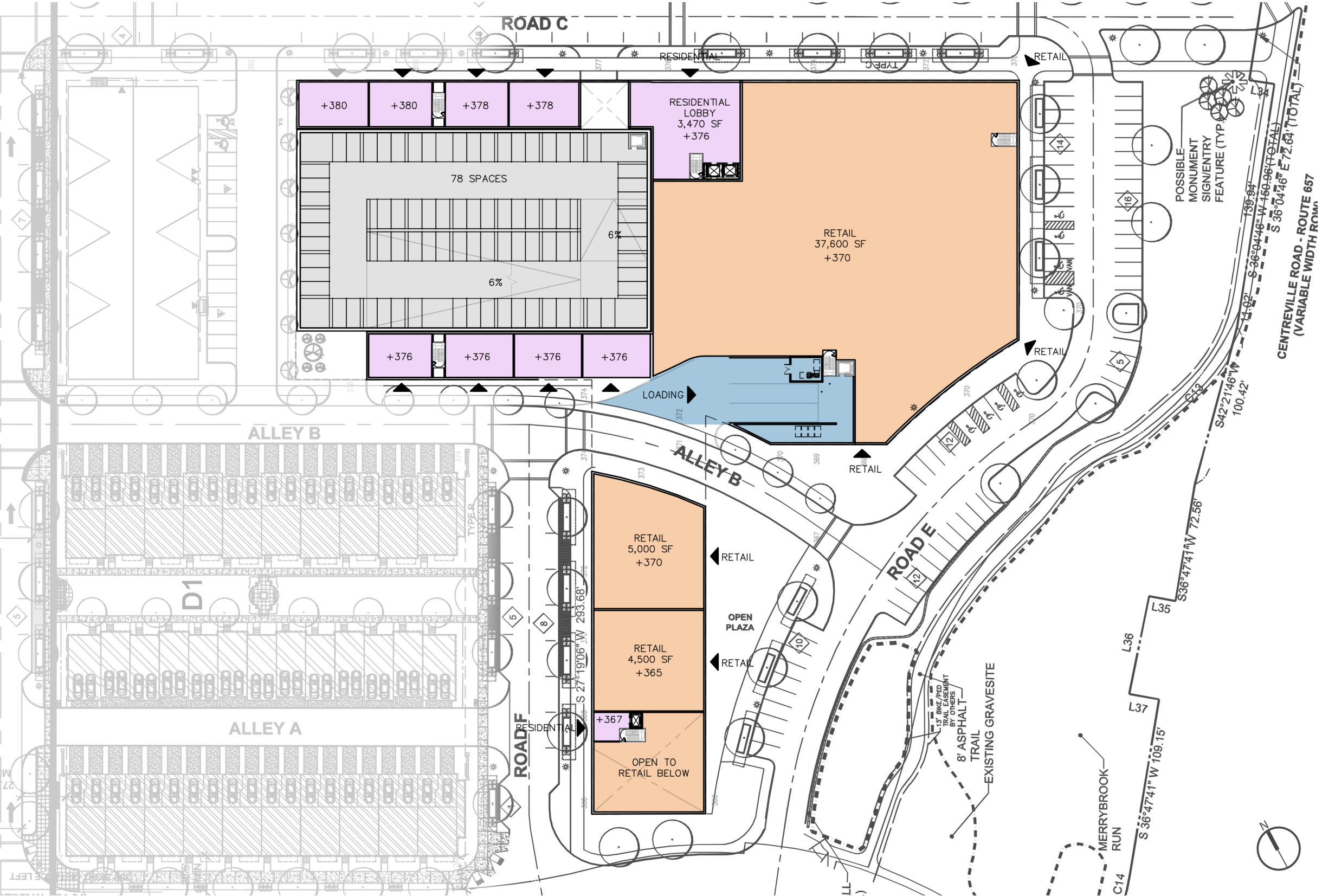
ARROWBROOK CENTRE D2 / D3 MULTI-FAMILY RESIDENTIAL



D2 RESIDENTIAL			
FLOOR	RESIDENTIAL (SF)	UNITS (#)	RETAIL (SF)
1	13,800	8	51,500
2	-	-	-
3	69,750	69	-
4	69,750	69	-
5	69,750	69	-
6	69,750	69	-
7	69,750	69	-
8	56,550	56	-
TOTAL	419,100	409	51,500

D2 PARKING			
FLOOR	PROVIDED	RESIDENTIAL REQ.	RETAIL REQ.
P-1	174	-	-
1	74	-	-
2	78	-	-
3	78	-	-
4	78	-	-
5	78	-	-
6	78	-	-
7	78	-	-
ON GRADE	100	-	-
TOTAL	816	614	206

- AMENITY
- RESIDENTIAL / LOBBY
- RETAIL
- BLD BOH / SERVICE
- PARKING

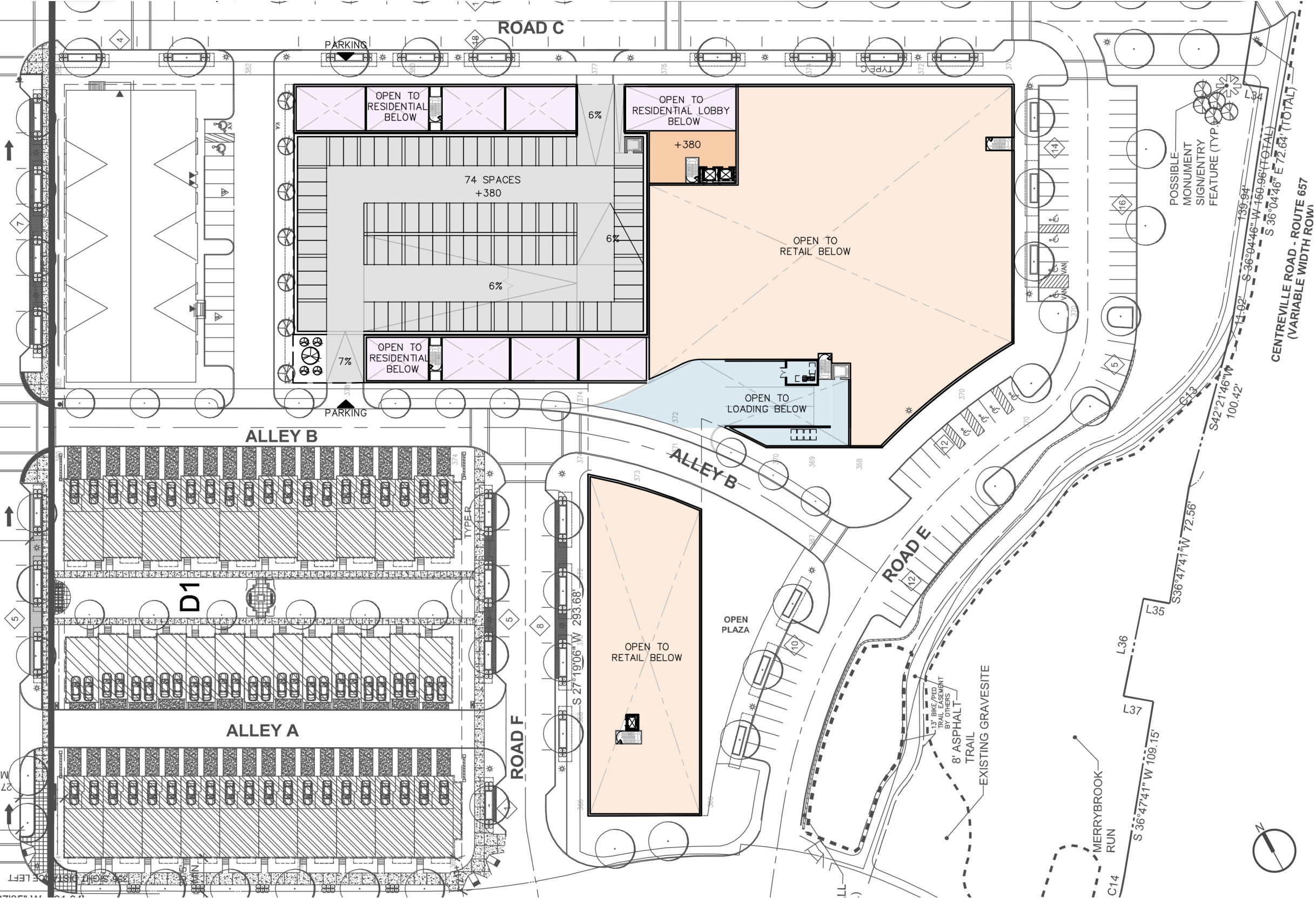


D2 RESIDENTIAL			
FLOOR	RESIDENTIAL (SF)	UNITS (#)	RETAIL (SF)
1	13,800	8	51,500
2	-	-	-
3	69,750	69	-
4	69,750	69	-
5	69,750	69	-
6	69,750	69	-
7	69,750	69	-
8	56,550	56	-
TOTAL			
	419,100	409	51,500

D2 PARKING			
FLOOR	PROVIDED	RESIDENTIAL REQ.	RETAIL REQ.
P-1	174	-	-
1	74	-	-
2	78	-	-
3	78	-	-
4	78	-	-
5	78	-	-
6	78	-	-
7	78	-	-
ON GRADE	100	-	-
TOTAL			
	816	614	206

- AMENITY
- RESIDENTIAL / LOBBY
- RETAIL
- BLD BOH / SERVICE
- PARKING

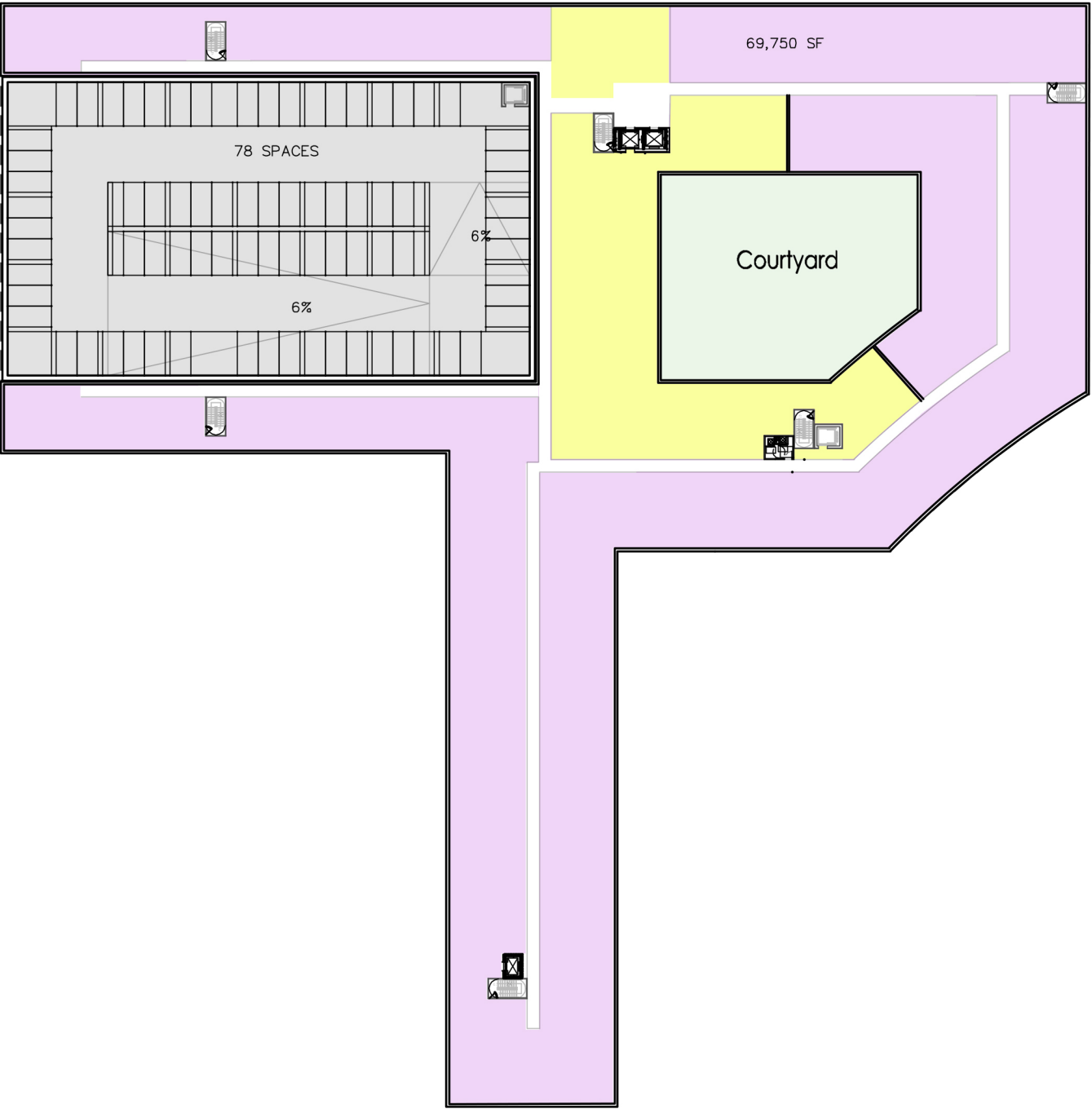
ARROWBROOK CENTRE D2 / D3 MULTI-FAMILY RESIDENTIAL



D2 RESIDENTIAL			
FLOOR	RESIDENTIAL (SF)	UNITS (#)	RETAIL (SF)
1	13,800	8	51,500
2	-	-	-
3	69,750	69	-
4	69,750	69	-
5	69,750	69	-
6	69,750	69	-
7	69,750	69	-
8	56,550	56	-
TOTAL	419,100	409	51,500

D2 PARKING			
FLOOR	PROVIDED	RESIDENTIAL REQ.	RETAIL REQ.
P-1	174	-	-
1	74	-	-
2	78	-	-
3	78	-	-
4	78	-	-
5	78	-	-
6	78	-	-
7	78	-	-
ON GRADE	100	-	-
TOTAL	816	614	206

- AMENITY
- RESIDENTIAL / LOBBY
- RETAIL
- BLD BOH / SERVICE
- PARKING

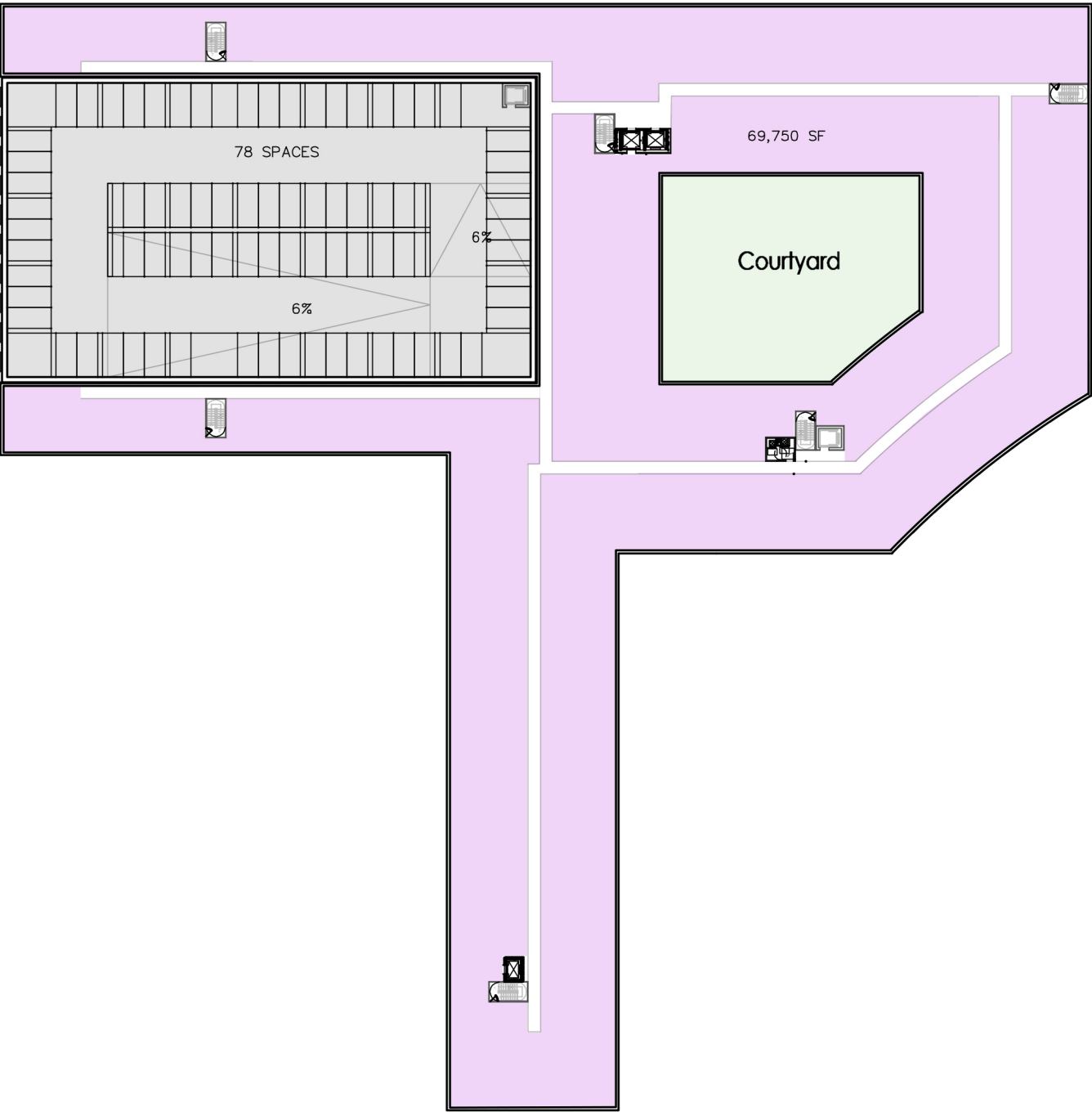


D2 RESIDENTIAL			
FLOOR	RESIDENTIAL (SF)	UNITS (#)	RETAIL (SF)
1	13,800	8	51,500
2	-	-	-
3	69,750	69	-
4	69,750	69	-
5	69,750	69	-
6	69,750	69	-
7	69,750	69	-
8	56,550	56	-
TOTAL	419,100	409	51,500

D2 PARKING			
FLOOR	PROVIDED	RESIDENTIAL REQ.	RETAIL REQ.
P-1	174	-	-
1	74	-	-
2	78	-	-
3	78	-	-
4	78	-	-
5	78	-	-
6	78	-	-
7	78	-	-
ON GRADE	100	-	-
TOTAL	816	614	206

- AMENITY
- RESIDENTIAL / LOBBY
- RETAIL
- BLD BOH / SERVICE
- PARKING



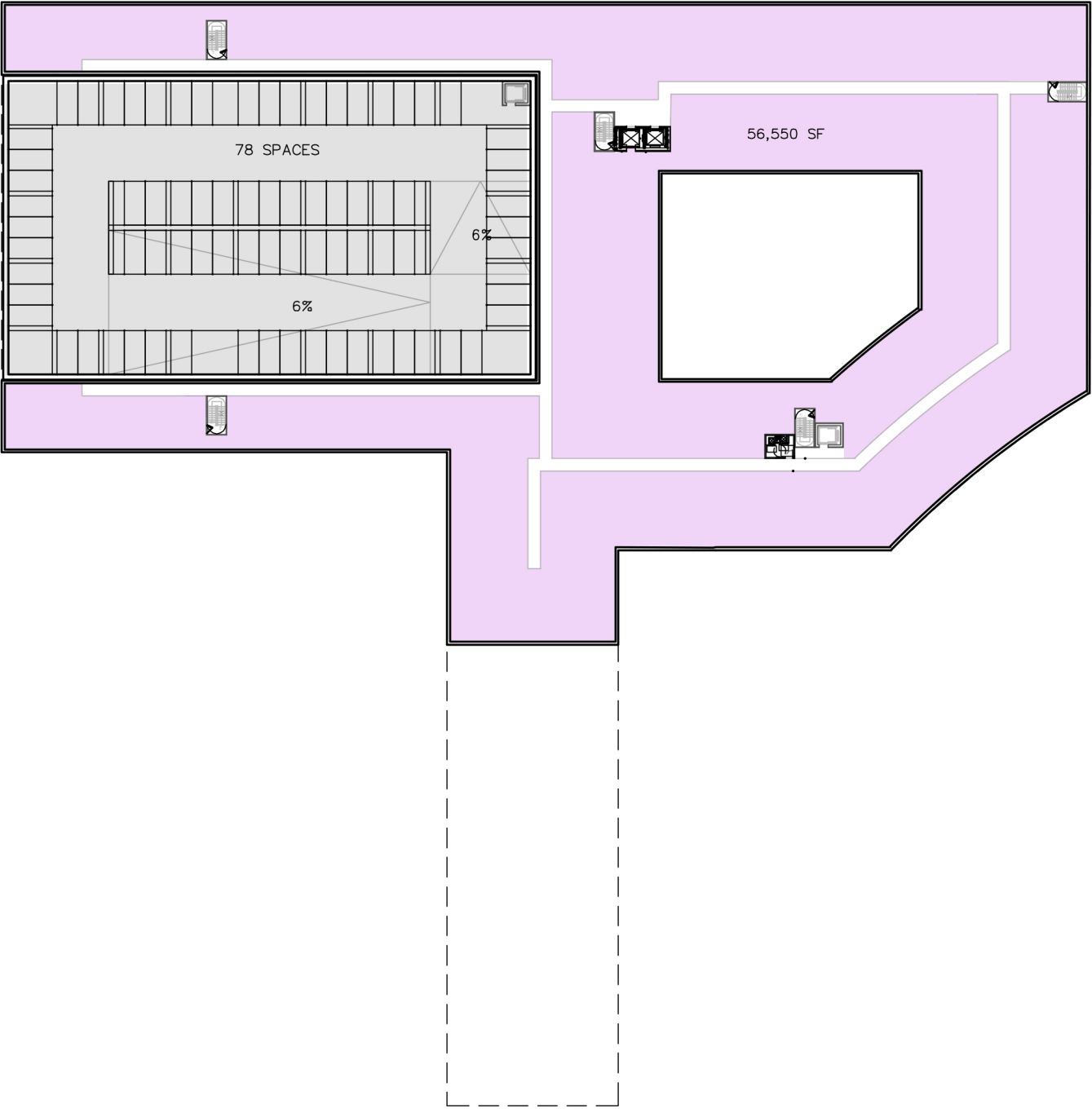


D2 RESIDENTIAL			
FLOOR	RESIDENTIAL (SF)	UNITS (#)	RETAIL (SF)
1	13,800	8	51,500
2	-	-	-
3	69,750	69	-
4	69,750	69	-
5	69,750	69	-
6	69,750	69	-
7	69,750	69	-
8	56,550	56	-
TOTAL			
	419,100	409	51,500

D2 PARKING			
FLOOR	PROVIDED	RESIDENTIAL REQ.	RETAIL REQ.
P-1	174	-	-
1	74	-	-
2	78	-	-
3	78	-	-
4	78	-	-
5	78	-	-
6	78	-	-
7	78	-	-
ON GRADE	100	-	-
TOTAL			
	816	614	206

- AMENITY
- RESIDENTIAL / LOBBY
- RETAIL
- BLD BOH / SERVICE
- PARKING



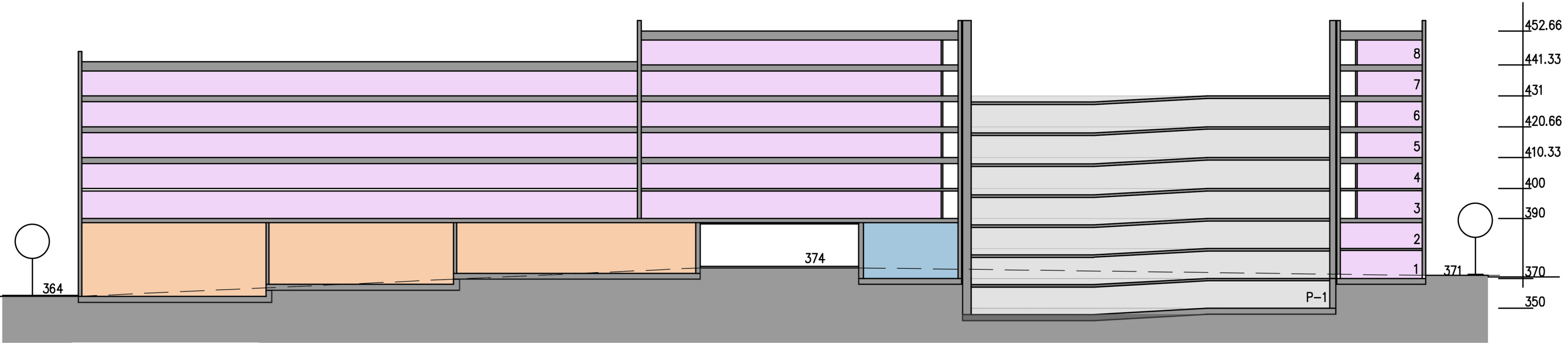


D2 RESIDENTIAL			
FLOOR	RESIDENTIAL (SF)	UNITS (#)	RETAIL (SF)
1	13,800	8	51,500
2	-	-	-
3	69,750	69	-
4	69,750	69	-
5	69,750	69	-
6	69,750	69	-
7	69,750	69	-
8	56,550	56	-
TOTAL	419,100	409	51,500

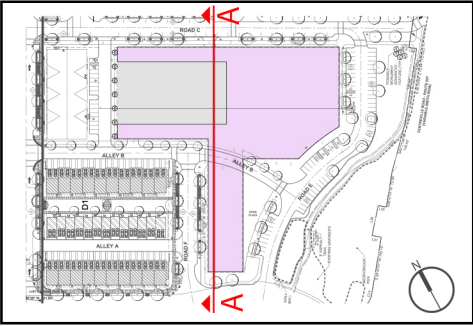
D2 PARKING			
FLOOR	PROVIDED	RESIDENTIAL REQ.	RETAIL REQ.
P-1	174	-	-
1	74	-	-
2	78	-	-
3	78	-	-
4	78	-	-
5	78	-	-
6	78	-	-
7	78	-	-
ON GRADE	100	-	-
TOTAL	816	614	206

- AMENITY
- RESIDENTIAL / LOBBY
- RETAIL
- BLD BOH / SERVICE
- PARKING

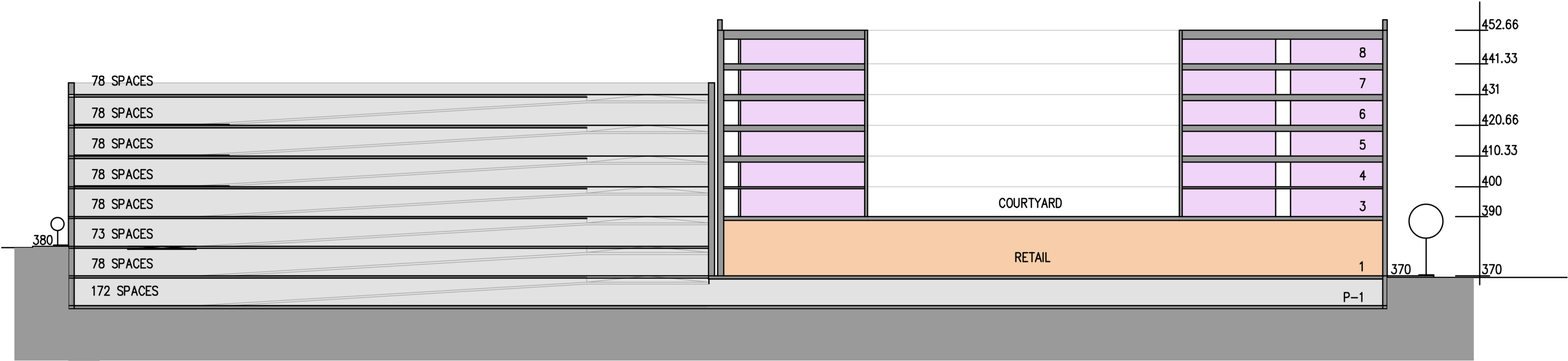




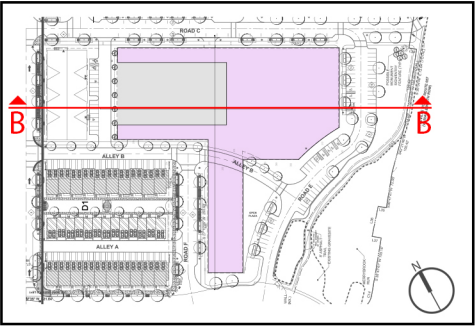
SECTION A



- AMENITY
- RESIDENTIAL / LOBBY
- RETAIL
- BLD BOH / SERVICE
- PARKING



SECTION B



- AMENITY
- RESIDENTIAL / LOBBY
- RETAIL
- BLD BOH / SERVICE
- PARKING