

**NEW**

# HIGHLAND HOMES

**SUBDIVISION OFF HIGHLAND AVENUE IN CLARKSTON**

Starting base price of

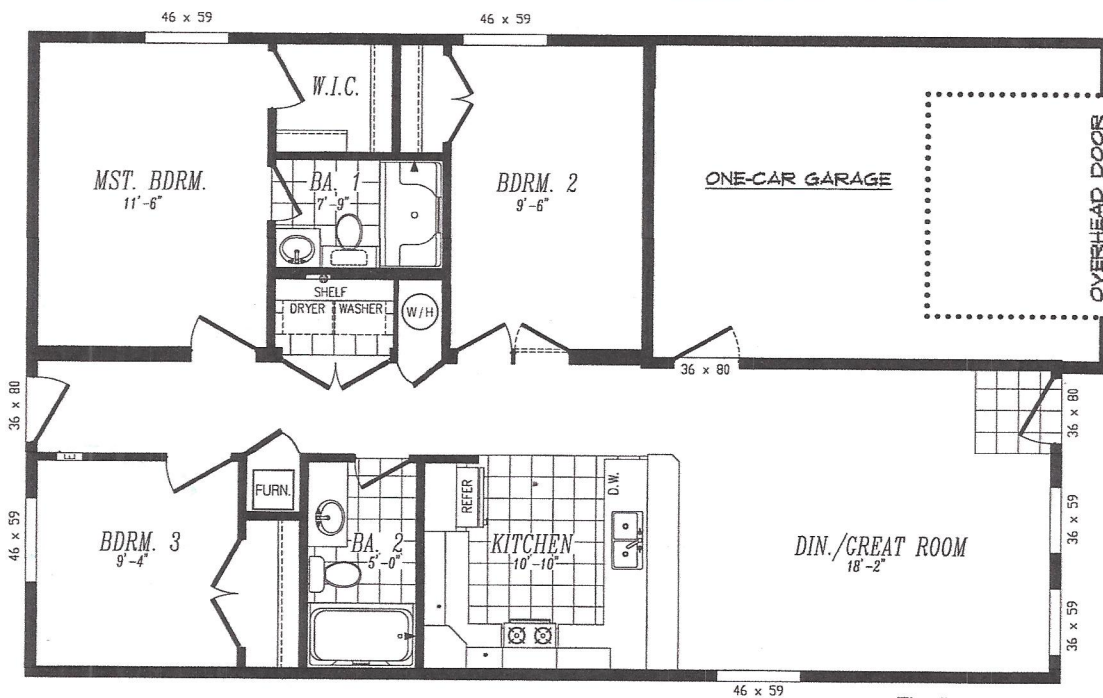
# \$175,900

Includes home and lot!

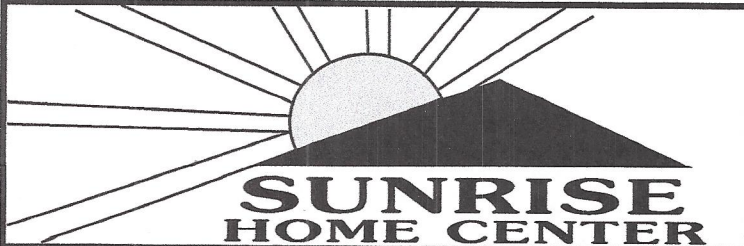
## TOWNHOMES

- Move-In ready homes include lot
- Retirement/Handicap Friendly
- 3 Bedroom, 2 Bath Manufactured homes
- Approximately 1,155 sq. ft living space
- Attached one-car garage
- Includes kitchen appliances and air conditioning
- Energy Efficient
- 5 year structural warranty
- Larger Lots Available

*Marlette*<sup>®</sup>



The floor plan will be reversed for some lots.



For more information visit us at  
1463 Bridge St., Clarkston, WA  
509.758.4000 • 800.701.4001  
[www.sunrisehomecenter.com](http://www.sunrisehomecenter.com)