



Fypon® Polyurethane

Loctite® PL Premium® Adhesive

Niches • Medallions • Brackets • Corbels • Beams • Shutters • Trellises



A urethane-based adhesive such as Loctite PL Premium Construction Adhesive must be used on all joints when installing urethane products. This will minimize the effects of expansion and contraction on the product. For additional information on adhesives, detailed installation instructions and finishing information, please visit Fypon.com.



	Fypon Polyurethane	Wood	Composite
May Be Placed Against Masonry	YES	NO	NO
Above-Grade Distance Requirement	0"	8"	6"
Water Absorption	NO	YES	YES
Insect Resistant	YES	NO	NO
Moisture Resistant	YES	NO	NO
Pre-Drilling Required When Edge Nailing	NO	YES	YES
Requires Sanding Priming and Sealing	NO	YES	YES
Painting (Number of Coats Needed)	1	2	2
Quality	Consistent Quality, no waste; consistent finish	Natural variation; must be culled	
Versatility	Suitable Options for interior or exterior application	Different grade of material and finish required for out door use	

Cutting & Milling

Fypon polyurethane products can be cut and trimmed with standard woodworking tools. Table saws, circular saws, jig saws, band saws and miter saws will give you excellent results during the installation process.

Note: Trimming textured product will remove the texture and create an exposed polyurethane edge. This edge must be patched with standard wood filler and finished with paint or stained to protect the exposed polyurethane from discoloration from the sun.



©2015 EL & EL Wood Products Corp. All rights reserved.

15081702

Distributed by:



EL & EL Wood Products

Millwork that creates distinction.™

Why Use Polyurethane?

STYLE



An eye for detail. A history of durability. The design expertise to benefit every project. Fypon delivers lasting style for homeowners, and helps builders add beauty to every home. From ornate to understated, vintage to modern, we've designed an incredible range of millwork products that transcend into timeless styles.

PERFORMANCE



Fypon polyurethane products differ from traditional building materials because they have a closed-cell structure. They cannot be penetrated by moisture or insects. So whether your project calls for functional or decorative pieces, you get added durability – without rotting, warping, cracking, chipping or peeling – and fewer call-backs. Along with superior performance, Fypon products are easy to work with. They do not require special tools for installation, and come ready to paint or stain.*

PARTNERSHIP



Choosing Fypon also means getting the service and support you need at every phase of your project. Beginning with planning and takeoff, we're a reliable partner all the way through project completion. And as an industry leader, we of course offer a Lifetime Limited Warranty* for homeowners.

Polyurethane Products - An Overview

Product Categories _____

- Window & Door Trim
- Mouldings
- E-Vent™ Systems
- Louvers & Gable Vents
- Balustrade Systems
- Decorative Millwork
- Porch Posts, Columns & Post Wrap

Installation _____

- Each piece has a consistent quality and finish, which require no sanding, priming or sealing
- Pieces can be sawed, drilled, nailed and glued like wood
- Significantly lighter in weight than wood or plaster products, saving time and labor on the job-site
- Use standard woodworking tools for installation

Features & Benefits _____



Lasting performance and minimal upkeep compared to other materials.



Lightweight and does not require special tools.



Polyurethane smooth or textured – comes pre-primed and ready to paint or stain.*



Our closed-cell polyurethane is resistant to insects.



Ideal for moisture-prone interior spaces like bathrooms, kitchens and basements.



Beautiful and durable in all seasons, withstands the elements better than traditional materials.

*See Fypon.com for complete warranty details, exclusions, and instructions on proper use of adhesives and painting.

Custom Services _____

- Alter a standard part to match aesthetic and dimensional specifications
- Additional Sizes: Such as crossheads in custom widths
- Add keystones, dentil trim and bottom trim to standard parts
- Route channels in standard parts, such as window and door trim and louvers, to accept siding
- Turn your sketch and dimensions into almost any millwork or trim product imaginable
- Custom shapes, sizes and profiles for that special job
- Authentic replicas for historical restorations

Fire Rating _____

- Chapter 7a requirements for fire resistant building materials do not apply to MOST Fypon polyurethane PRODUCTS. The WUI (Wildland Urban Interface) requirements focus on the structural building materials and the fire resistance of the structure itself. The Architectural Trim Exception EXEMPTS Exterior wall architectural trim, embellishments, fascias, and gutters from the requirements of CBC, CHAPTER 7a.
- For information purposes only, not to be relied upon for code compliance purposes, consult your local building code authority to determine suitability.



Ceiling Medallions



Wall Niches



Crown Mouldings



Window & Door Trim Beams



Window & Door Shutters



Timber Beams

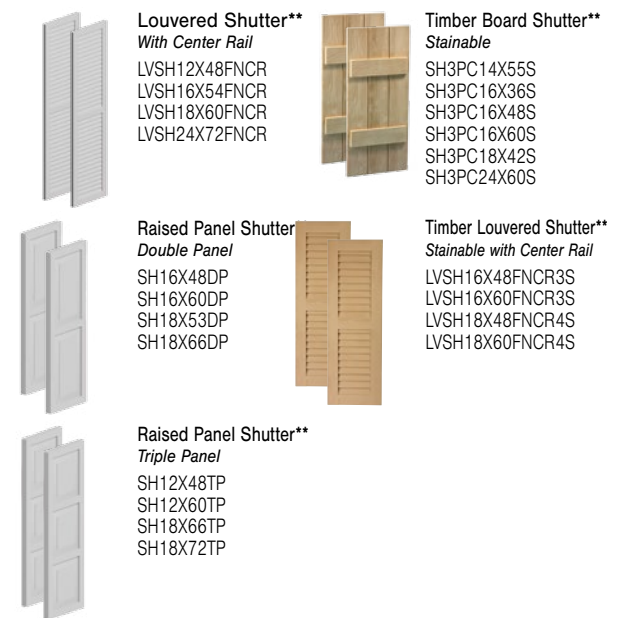


Beam Straps



Shutters

**Special order only, allow 2-3 weeks lead time





Timber Corbels

Bullnose Stainable

-  CORBN14X8X6S*
-  CORBN14X10X6S*
-  CORBN18X12X6S*
-  CORBN22X10X6S*




Timber Brackets & Corbels

Stainable

-  COROG24X6S*  COROG8X12S*
-  COROG20X7S*  COROG34X19S*
-  COROG29X8S*

Timber Brackets & Corbels

Cove Stainable

-  CORCV18X6X4S*
-  CORCV18X8X4S*
-  CORCV18X12X6S*
- CORCV18X6X6S*
- CORCV18X8X6S*
- CORCV18X10X6S*

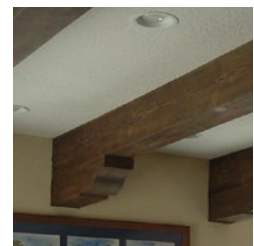
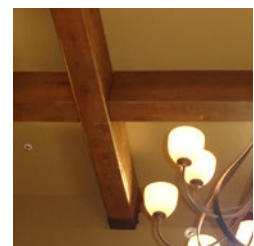
* Product has open cavity

Beams

-  Timber Beam**
Classic Style Stainable
BM4X5X192S
-  Smooth Beam
BM4X5X192
-  Timber Beam
Cedar Style Stainable
BMCDR8X6X168S
-  Timber Beam**
Solid Stainable
BMCE4X8X144S

NOTE: This product is not finished on all sides. Scrolled profile on both ends.

-  Shaped Header Moulding
Cedar Style Stainable
MLD388-12S

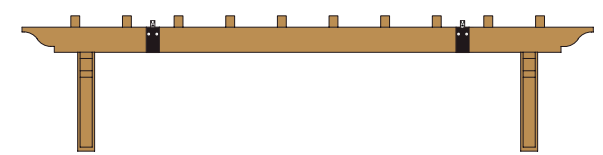


**Special order only, allow 2-3 weeks lead time

Trellis System




**Special order only, allow 2-3 weeks lead time

Available in: Timber Stainable finish or Smooth White Paintable finish



TRLS18987**
Fits 16'-18' Garage Doors

System Contents

Image	Qty	Part Number	Description
	2	BKT32X31X5S**	Outlooker
	4	BMD4X8X144S	12' Beam
	18	FLTBA36X3X3S	Rafter Tail
	1	TRLS18989	Hardware Kit