

Rabbit Anti-ER [MD4R]:RM0247, RM0247RTU7

Intended Use: For Research Use Only

Description: Estrogen Receptor Alpha (ER or ER Alpha) is a nuclear protein and member of the steroid hormone receptor family. ER alpha possesses both DNA binding and ligand binding domains, and exerts a significant role in activating the transcription of certain genes. Ligand-dependent dimerization and phosphorylation both function to regulate the transcriptional activation of ER alpha.

Specifications:

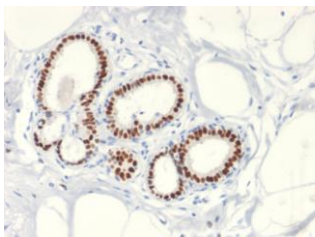
Clone: MD4R
Source: Rabbit
Isotype: IgG
Reactivity: Human
Localization: Nucleus
Formulation: Antibody in PBS pH7.4, containing BSA, glycerol, and $\leq 0.09\%$ sodium azide (NaN₃).
Storage: Store at 2°- 8°C.
Applications: IHC
Package:

Description	Catalog No.	Size
ER Concentrated	RM0247	1 ml
ER Prediluted	RM0247RTU7	7 ml

IHC Procedure*:

Positive Control Tissue: Breast cancer
Concentrated Dilution: 50-200
Pretreatment: Tris EDTA pH9.0, 15 minutes using Pressure Cooker, or 30-60 minutes using water bath at 95°-99°C
Incubation Time and Temp: 30-60 minutes @ RT
Detection: Refer to the detection system manual

* Result should be confirmed by an established diagnostic procedure.



FFPE human breast cancer stained with anti-ER using DAB

References:

1. Membrane estrogen receptor alpha is an important modulator of bone marrow C-Kit+ cells mediated cardiac repair after myocardial infarction. Su F, et al. Int J Clin Exp Pathol. May 1;8(5):4284-95, 2015.
2. Estrogen receptor alpha gene expression in breast cancer tissues from the Iranian population--a pilot study. Hosseini A, et al. Asian Pac J Cancer Prev. 15(20):8789-91, 2014.
3. Significance of the progesterone receptor and epidermal growth factor receptor, but not the estrogen receptor, in chemically induced lung carcinogenesis in female A/J mice. Kishi S, et al. Oncol Lett. Dec;8(6):2379-2386, 2014..
4. The prognostic value of estrogen receptor beta and proline-, glutamic acid- and leucine-rich protein 1 (PELPI) expression in ovarian cancer. Aust S, et al. BMC Cancer. Mar 14;13:115, 2013.
5. Loss of estrogen receptor beta expression correlates with shorter overall survival and lack of clinical response to chemotherapy in ovarian cancer patients. Halon A, et al. Anticancer Res. Feb;31(2):711-8, 2011.
6. Estrogen receptors beta and alpha have specific pro- and anti-nociceptive actions. Coulombe MA, et al. Neuroscience. Jun 16;184:172-82, 2011.

Doc. 100-RM0247
Rev. A