

Mouse Anti-Myosin Smooth Muscle Heavy Chain [SMMS1]: MC0206, MC0206RTU7

Intended Use: For Research Use Only

Description: SMMS-1 is an antibody to smooth muscle myosin, heavy chain that reacts with human visceral and vascular smooth muscle cells. The antibody also reacts with human myoepithelial cells. It is very helpful in distinguishing between benign sclerosing breast lesions and infiltrating carcinomas in difficult cases since it strongly stains the myoepithelial layer in the benign lesions while it is negative in the infiltrating carcinomas.

Specifications

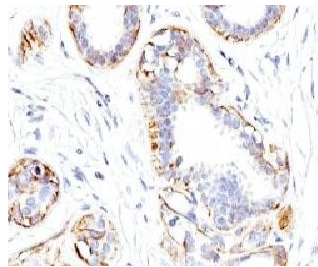
Clone: SMMS1
Source: Mouse
Reactivity: Human
Isotype: IgG1k
Localization: Nucleus
Formulation: Purified antibody in PBS pH7.4, containing BSA and $\leq 0.09\%$ sodium azide (NaN₃)
Storage: Store at 2°- 8°C
Applications: IHC
Package:

Description	Catalog No.	Size
Myosin Smooth Muscle Heavy Chain Concentrated	MC0206	1 ml
Myosin Smooth Muscle Heavy Chain Prediluted	MC0206RTU7	7 ml

IHC Procedure*

Positive Control Tissue: Transitional cell cancer
Concentrated Dilution: 50-200
Pretreatment: Citrate pH6.0 or EDTA pH8.0, 15 minutes using Pressure Cooker, or 30-60 minutes using water bath at 95°-99°C
Incubation Time and Temp: 30-60 minutes @ RT
Detection: Refer to the detection system manual

* Result should be confirmed by an established diagnostic procedure.



FFPE human breast carcinoma stained with anti-SMMS using DAB

References:

1. A Rapid Automated Protocol for Muscle Fiber Population Analysis in Rat Muscle Cross Sections Using Myosin Heavy Chain Immunohistochemistry. Bergmeister KD, et al. J Vis Exp. Mar 28;(121), 2017.
2. Myosin Heavy Chain Expression Can Vary over the Length of Jaw and Leg Muscles. Korfage JA, et al. Cells Tissues Organs. 201(2):130-7, 2016.
3. Automated muscle fiber type population analysis with ImageJ of whole rat muscles using rapid myosin heavy chain immunohistochemistry. Bergmeister KD, et al. Muscle Nerve. Aug;54(2):292-9, 2016.