

# Smoking Gun Plantation Worth & Turner County GA +-759 GIS Mapped Acres +-752.08 Taxed Acres

Type	Acres	%
PLBstqw	319.4	42.1%
PLBst	59.2	7.8%
PLLpw	30.7	4.0%
Natural	285.8	37.7%
Lake	10.3	1.4%
NonTimber	53.6	7.1%
	759.0	100.0%

## Legend

  Tracts

## Lines

### TractNum, Descrip

→ 1074, Named Creek

- - - 1074, Woods Rd

- - - 1074, Drain

● Buildings

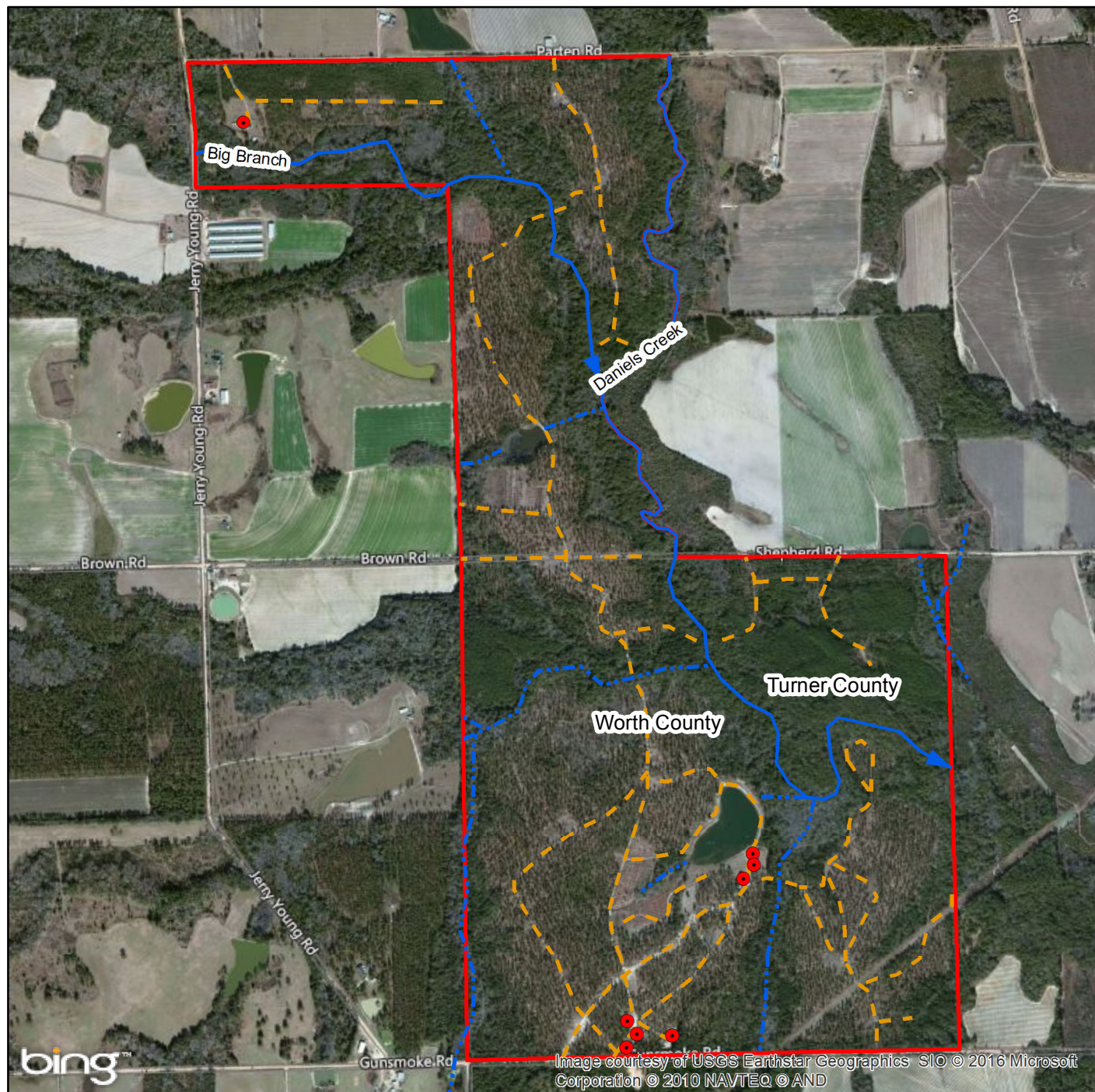
## Notes:

PLBstqw: Planted Lob, Sawtimber Class, Mostly groomed for Quail Hunting

PLBst: Planted Lob, Sawtimber is present, mostly never thinned

PLLpw: Planted Longleaf, Pulpwood Class, some CRP, never thinned

Natural: Mature Natural Hardwood/Pine Mix. Some planted pines present. Mix of bottom, low, and some high ground.



www.matreforestry.com  
Albany, Georgia  
229-639-4973

Mapped by Mike Matre in ArcGIS.  
Map information is not guaranteed.

1:16,800  
1 in = 1,400 ft

1 inch equals 0.27 miles

0 330660 1,320 Feet  
|-----|-----|-----|-----|-----|

Date: 5/4/2016