

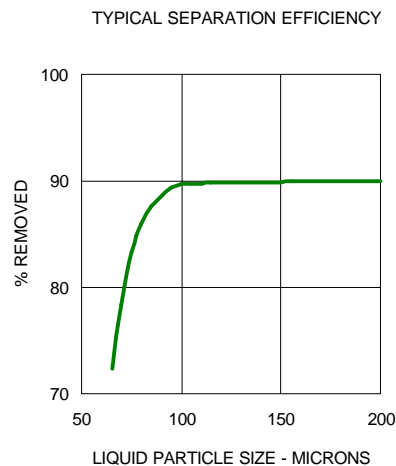
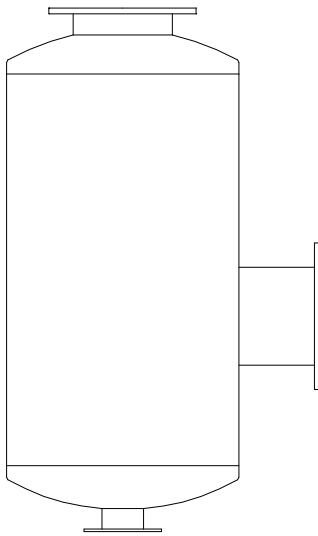
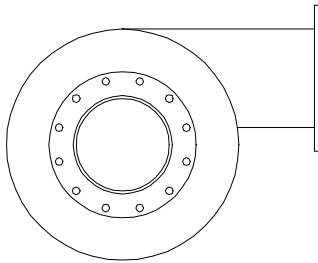
Model 181 Inlet Separator

Standard Features:

- ✓ All Steel Welded Construction
- ✓ Quality Fabrication Techniques
- ✓ Plate Flanges to Match ASA 125# Flanges
- ✓ Prime Coated Exterior Surfaces

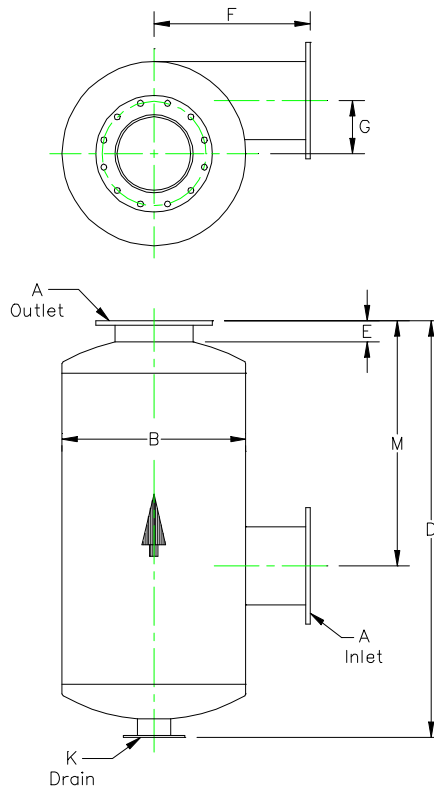
Optional Features:

- ✓ Materials as Specified
- ✓ Finish as Specified
- ✓ Threaded Connections
- ✓ Companion Flanges
- ✓ Inspection Openings or Man Ways
- ✓ Flange Drilling as Specified



Application:

The **VANEC** Model 181 Separator is designed for use on the inlet of liquid sealed, vacuum pumps. It separates the process liquid from the gas stream.



VANEC Model 181

Model	Dimensions in Inches								Est.Wt. Lbs.
	A	B	D	E	F	G	K	M	
181-04	4	12	26	3	11	3 3/4	2	15	60
181-05	5	16	31	3	14 1/4	5 3/16	2 1/2	18	95
181-06	6	18	36	3	15 1/2	5 11/16	3	21	125
181-08	8	22	46	3 1/2	18	6 11/16	3 1/2	27	175
181-10	10	24	58	3 1/2	23	6 5/8	4	34	285
181-12	12	30	68	3 1/2	25 1/2	8 5/8	5	40	460
181-14	14	36	78	3 1/2	28	11	6	46	690
181-16	16	42	88	3 1/2	28	13	6	52	1,045
181-18	18	42	98	3 1/2	30 1/2	12	8	58	1,175
181-20	20	48	108	4 1/2	33	14	8	64	1,500
181-22	22	54	120	4 1/2	35	16	8	71	1,815
181-24	24	60	130	4 1/2	38	18	10	77	2,650
181-26	26	66	140	4 1/2	40 1/2	20	10	83	3,250
181-28	28	72	150	4 1/2	43	22	10	89	3,805
181-30	30	78	160	4 1/2	45 1/2	24	10	95	4,560

VANEC Industrial Silencers
716-827-4959