

Rabbit Anti-CD205/LY75/gp200 [EP176]: RM0031, RM0031RTU7

Intended Use: For Research Use Only

Description: CD205, also named DEC-205, belongs to the macrophage mannose receptor family of C-type lectin endocytic receptors. CD205 is predominantly expressed by the thymic cortical epithelium and by dendritic cells (DC), but can also be detected at low levels in T and B lymphocytes and several other epithelial cell types. CD205 is a novel thymic epithelial marker that is important for the positive selection process of thymocytes. It is a sensitive and specific marker for thymoma, while the sensitivity to thymic carcinoma is lower than CD5 and CD117.

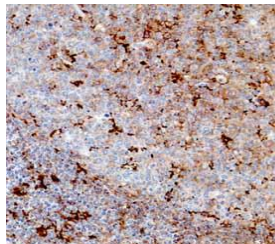
Specifications

Clone: EP176
 Source: Rabbit
 Isotype: IgG
 Reactivity: Human
 Localization: Membrane, cytoplasm
 Formulation: Antibody in 10 mM PBS, containing BSA and ≤ 0.09% sodium azide (NaN₃)
 Storage: Store at 2°- 8°C
 Applications: IHC
 Package:

Description	Catalog No.	Size
CD205/LY75/gp200 Concentrated	RM0031	1 ml
CD205/LY75/gp200 Prediluted	RM0031RTU7	7 ml

IHC Procedure*

Positive Control Tissue: Tonsil
 Concentrated Dilution: 50-200
 Pretreatment: EDTA pH8.0, 15 minutes using Pressure Cooker, or 30-60 minutes using water bath at 95°-99°C
 Incubation Time and Temp: 30-60 minutes @ RT
 Detection: Refer to the detection system manual
 * Result should be confirmed by an established diagnostic procedure.



FFPE human tonsil stained with anti-CD205 using DAB

References:

1. In vivo physiological and transcriptional profiling reveals host responses to Clostridium difficile toxin A and toxin B. D'Auria KM, et al. Infect Immun 81:3814-24, 2013.
2. Generation of anti-human DEC205/CD205 monoclonal antibodies that recognize epitopes conserved in different mammals. Park CG et al. J Immunol Methods. 2012.
3. Diagnostic utility of thymic epithelial markers CD205 (DEC205) and Foxn1 in thymic epithelial neoplasms. Nonaka D et al. Am J Surg Pathol. 2007.