



Drylac[®]
Powder Coatings

Special Effects

Volume 7



Replacing boredom and dullness with Special Effects oomph and vivacity

Special Effects color chart exhibits a collection of several lines of special effect finishes designed to provide a distinctive surface appearance while protecting the substrate from corrosion and other elements.

Anodized Effect is a line of super durable polyester TGIC-free AAMA 2604-compliant powder coatings developed to emulate anodized finishes. The finishes are formulated for aluminum extrusions, cast pieces and other ferrous and non ferrous substrates. They are suitable for Corona and Tribo application equipment.

Candy Transparent is a range of transparent finishes with a candy effect. Colors displayed in this chart are representative of an aluminum substrate. Substrates such as steel, chrome and brushed aluminum are also suitable for top coating with this finish. To achieve an equal finish with other substrates, it is recommended to use a shiny metallic effect as basecoat, such as **Mirror Silver; TIGER Drylac® 49/91260, Kromezone; TIGER Drylac® 49/95001, Chrome OGF; TIGER Drylac® 49/91312** and **Sparkle Silver; TIGER Drylac® 49/90450**. Candy Transparent finishes are suitable for Corona and Tribo application equipment. **Candy Transparent finishes provide limited hiding and have limited UV stability.**

Designer Finish is a line developed with furniture and lighting designers in mind. These finishes provide a classical look in two and three-tone colors and textures simulating the oxidation of copper, natural rocks and stones. They are suitable for Corona application equipment.

Dormant Transparent flamboyant finish is obtained through the application of two coats. The effect will only evolve after the application of a clear top coat. Swatches in this chart were top-coated with **Clear Glossy; TIGER Drylac® 49/00530**. Additional eye-catching finishes can be achieved by using other **TIGER Drylac®** clear coats and clear glitters such as **Silver; TIGER Drylac® 49/00320** and **Twilight; TIGER Drylac® 49/00390**. These finishes are suitable for Corona application equipment. Best inter-coat adhesion is achieved by applying the base coat using Corona and the clear top coat using Tribo equipment.

Fluorescent finishes are available as single coat or 2-coat systems. In a 2-coat system, the Fluorescent powder coating must be applied over a smooth high gloss **White base coat; TIGER Drylac® 49/11000**. To achieve a custom-look, the Fluorescent finish can also be applied over **Mirror Silver; TIGER Drylac® 49/91260, Kromezone; TIGER Drylac® 49/95001** or **Sparkle Silver; TIGER Drylac® 49/90450**. Fluorescent finishes are suitable for Corona and Tribo application equipment. **Single coat Fluorescent finishes provide limited hiding. Single-coat and 2-coat Fluorescent finishes have limited UV stability.**

Hammertone finish looks as if the surface was textured with a ball peen hammer. The undulated contrast created by the underlying base color adds ambiguity to the finish. To obtain an adequate film thickness in the valleys of the texture, minimum film thickness guidelines must be observed. Hammertone finishes are suitable for Corona application equipment.

TIGER Drylac® standard and custom-colors in Series 39 and Series 49; made in the USA and Canada, are periodically re-certified and carry the UL (Underwriter Laboratory) Recognized Component Mark (Spec DTOV2.MH16276 and Spec DTOV2.MH27573). This UL mark is for all equipment and products intended for the American and Canadian markets.



Special Effects powder coatings in this color chart include

Interior and Exterior (non-architectural) applications	Polyester TGIC	Series 39
	Polyester Urethane	Series 44
	Polyester TGIC	Series 49
	Polyester TGIC-free	Series 59
Exterior (architectural) applications	Polyester TGIC-free Super Durable	Series 61

Color swatches displayed in this chart have been matched to color standards at a 60-degree visual angle under a D65 Daylight primary source. They are to be considered as a representation only. In practice, discrepancy between the color swatch and the actual powder coating may arise. This is due to paper and ink limitations, the influence of light and heat during the color chart production, as well as gloss level, substrate, surface variations, binder systems and pigments, coating thickness and cure oven conditions used during application. For an accurate color and finish assessment, it is recommended to obtain a powder coated sample panel from **TIGER Drylac®**.



Drylac®



anodized effect
Light Bronze | 61/78002



anodized effect
Medium Bronze | 61/68002



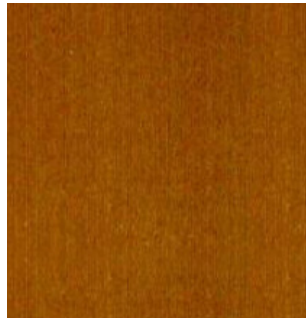
anodized effect
Dark Bronze | 61/68001



anodized effect
Black | 61/80079



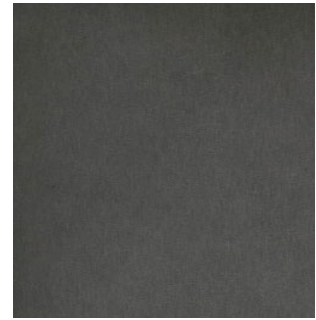
candy transparent ▲ **NEW**
Carina | 49/06001



candy transparent ▲ **NEW**
Nunavut | 49/03001



candy transparent ▲ **NEW**
Zokuna | 49/00106



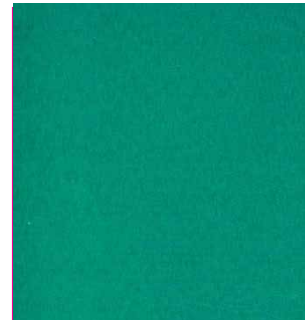
candy transparent ▲
Black Smoke Transparent | 49/80375



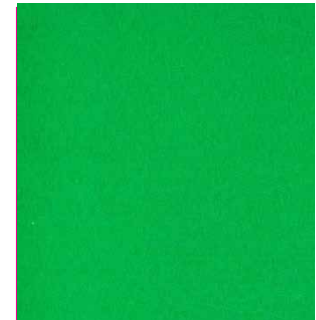
candy transparent ▲
Brass | 49/20180



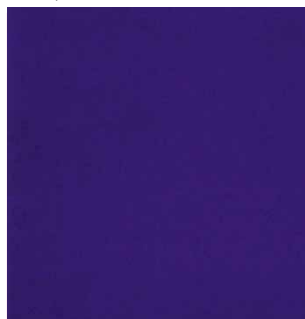
candy transparent ▲
Gold | 49/20170



candy transparent ▲
Transparent Green | 49/55730



candy transparent ▲
Candy Lime Green | 49/54810



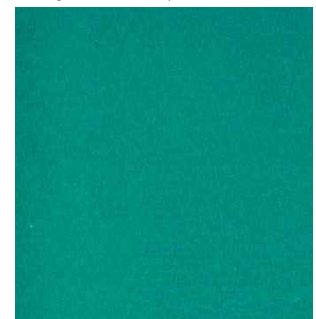
candy transparent ▲
Candy Purple | 49/41480



candy transparent ▲
Candy Blue | 49/43600



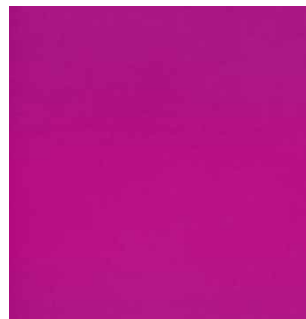
candy transparent ▲
Transparent Blue | 49/46110



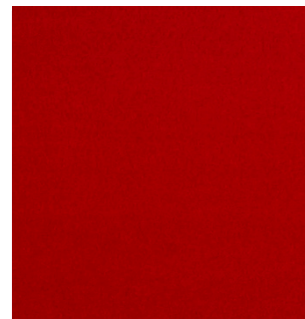
candy transparent ▲
Candy Teal | 49/42130



candy transparent ▲
Copper | 49/63130



candy transparent ▲
Candy Raspberry | 49/31570



candy transparent ▲
Candy Red | 49/33340



candy transparent ▲
Transparent Red | 49/35810

▲ Candy Transparent and Single-coat Fluorescent finishes provide limited hiding. Candy Transparent and Fluorescent finishes have limited UV stability. ❄️❄️ 2-coat Dormant Transparent system Clear Semi-gloss Polyester TGIC 4



anodized effect
Silver (clear) | 61/00015



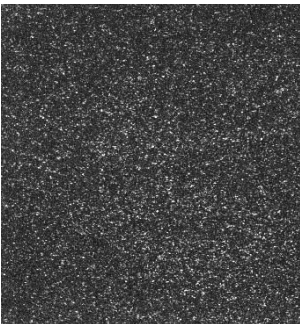
anodized effect
Champagne | 61/78003



designer finish
Lava Design Texture Matte | 44/60035



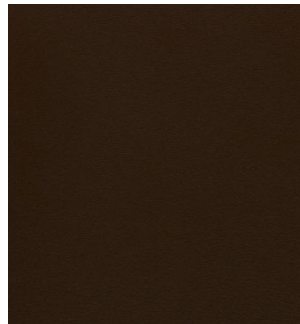
designer finish
Breccia Design Texture Matte | 44/60034



designer finish
Graphite Design Texture Matte | 44/80026



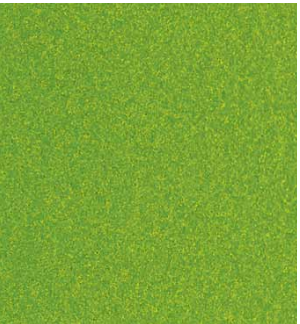
designer finish
Emerald Fine Texture | 49/50028



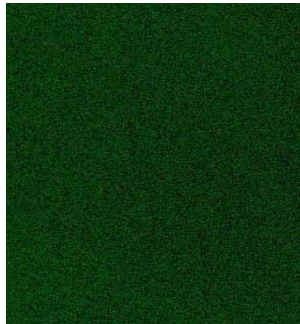
designer finish
Rust Fine Texture | 49/62711



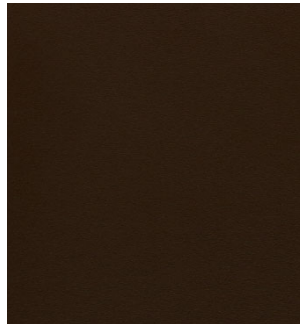
designer finish
Pyrite Fine Texture | 49/60015



dormant transparent **
Sparkle Granny Smith | 49/50032



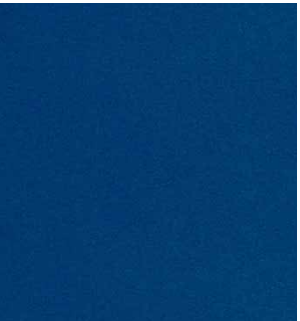
dormant transparent **
Sparkle Green | 49/50024



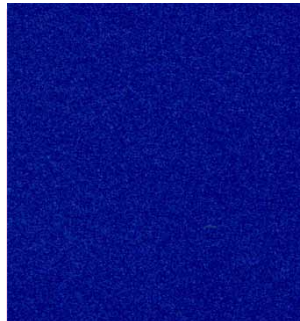
dormant transparent **
Sparkle Burgundy | 49/30193



designer finish
Quartzite Design Texture Matte | 44/10033



dormant transparent **
Sparkle Sky Blue | 49/40074



dormant transparent **
Sparkle Electric Blue | 49/40233



dormant transparent **
Blue | 49/40940



dormant transparent **
Violet | 49/41100



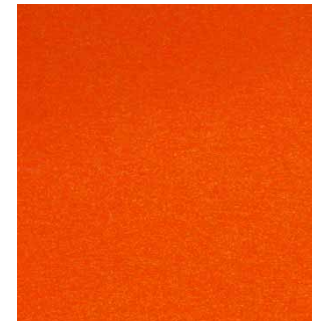
dormant transparent **
Sparkle Copper | 49/25002



dormant transparent **
Sparkle New Red | 49/30028



dormant transparent **
Sparkle Bomber Orange | 49/23531

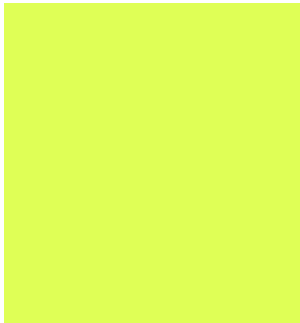


dormant transparent **
Sparkle Light Orange | 49/25006

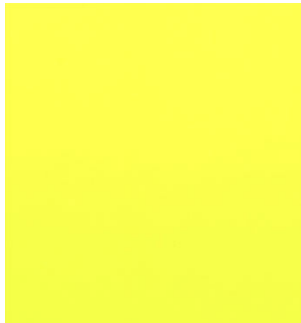
SPECIAL EFFECTS



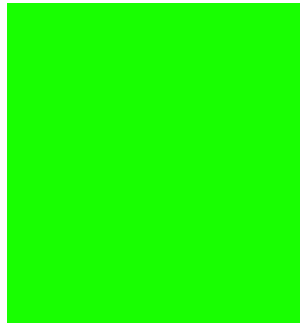
fluorescent ▲
Yellow | 49/22200



fluorescent *** ▲
Yellow | 49/21500



fluorescent ▲
Neon Yellow | 59/20043



fluorescent ▲
Green | 49/51340



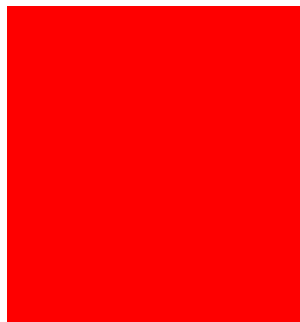
fluorescent *** ▲
Orange | 49/24080



fluorescent ▲
Orange | 49/24610



fluorescent ▲
Red Orange | 49/24620



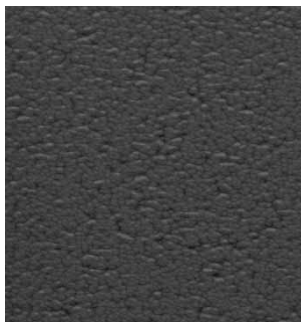
fluorescent *** ▲
Red | 49/30760



fluorescent ▲
Neon Pink | 59/30075



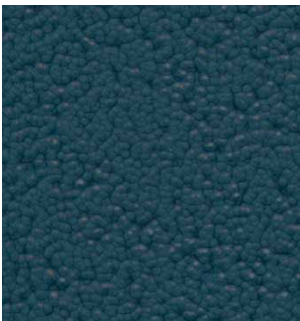
fluorescent *** ▲
Bright Pink | 49/30430



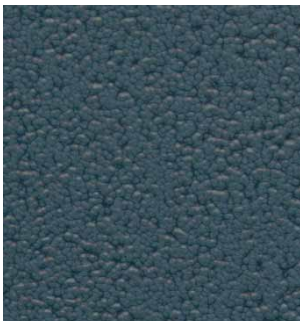
hammered
Black | 39/80005



hammered
Jet Black | 39/81420



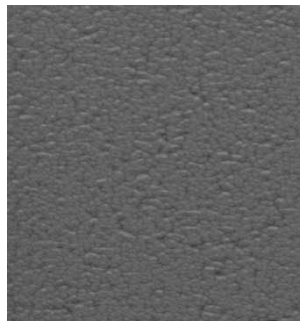
hammered
Capri | 39/40750



hammered
Sapphire | 39/40002



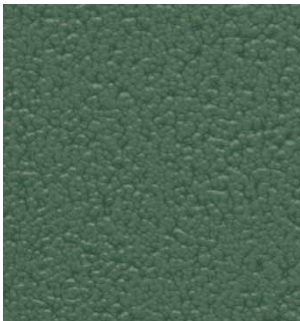
hammered
Light Silver | 39/90980



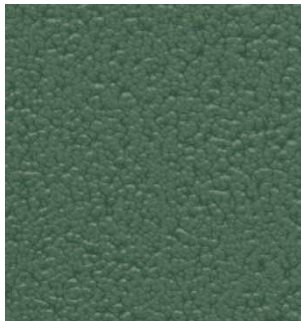
hammered
Silver | 39/90020



hammered
Gold Brown | 39/90280



hammered
Malachite | 39/40003



hammered
Reseda | 39/50002



hammered
Sepia | 39/60002

*** 2-coat Fluorescent system. Applied over a high gloss smooth White Base Coat 49/11000.

THE AMERICAS

CANADA
TIGER Drylac Canada Inc.
Guelph, ON, N1G 4P5
phone 1-800-243-8148
customerservice.ca@tiger-coatings.com

Warehouse Alberta
Calgary, AB, T2C 4Y7
phone 1-800-243-8148
customerservice.ca@tiger-coatings.com

Warehouse British Columbia
Richmond, BC, V6W 1L8
phone 1-800-243-8148
customerservice.ca@tiger-coatings.com

MEXICO
TIGER Drylac MEXICO S.A. DE C.V.
Naucalpan, Estado de México, CP 53580
phone 52-55-5363-1214
tigeremexico@tiger-coatings.com

TIGER Drylac MEXICO S.A. DE C.V.
San Luis Potosí, SLP, C.P. 78395
phone 52-444-799-7243
tigeremexico@tiger-coatings.com

U.S.A.
TIGER Drylac U.S.A., Inc.
St. Charles, IL 60174
phone 1-800-243-8148
customerservice.us@tiger-coatings.com

TIGER Drylac U.S.A., Inc.
Ontario, CA 91761
phone 1-800-243-8148
customerservice.us@tiger-coatings.com

Warehouse Texas
Garland, TX 75041
phone 1-800-243-8148
customerservice.us@tiger-coatings.com

Warehouse Georgia
Jonesboro, GA 30236
phone 1-800-243-8148
customerservice.us@tiger-coatings.com

Warehouse Pennsylvania
Reading, PA 19605
phone 1-800-243-8148
customerservice.us@tiger-coatings.com

EUROPE

AUSTRIA
TIGER Coatings GmbH & Co. KG
4600 Wels
phone 43-7242-400-0
office.at@tiger-coatings.com

BELARUS
ODO «Tehncolor» Minsk
220089 Minsk
phone/fax 375-17-204-12-77
tehncolor@tut.by

BENELUX
TIGER Coatings Belgium bvba
3640 Kinrooi
phone 32-89-70-00-16
office.be@tiger-coatings.com
office.nl@tiger-coatings.com

BOSNIA & HERZEGOVINA
KLIO d.o.o.
75300 Lukavac/Tuzla
phone 387-35-541-300
klio@klio.ba

BULGARIA & ROMANIA
Deyacolor LTD
1113 Sofia
phone 359-2-411-49-83
office@deyacolor.com

CROATIA
KLIO d.o.o.
10360 Popovec/Sesvete
phone 385-1-200-9041
klio@klio.hr

CZECH REPUBLIC
TIGERLAK, s.r.o.
620 00 Brno
phone 420-545-429-110
office.cz@tiger-coatings.com

FRANCE
TIGER S.A.R.L.
69480 Anse
phone 33-474-67-13-70
office.fr@tiger-coatings.com

GERMANY
DKF KLOZ GmbH
70736 Fellbach
phone 49-711-95-19-80-0
info@dkf-kloz.com

DKF KLOZ GmbH
58739 Wickede-Ruhr
phone 49-2377-36-25
info@dkf-kloz.com

Jochen Hänel Handelsvertretung
65239 Hochheim a. Main
phone 49-6146-83-58-81
jochen.haenel@tiger-coatings.com

Boris Herrmann Handelsvertretung
57192 Bergkamen
phone 49-2307-26-115-71
boris.herrmann@tiger-coatings.com

Thomas Leitzke Handelsvertretung
41470 Neuss
phone 49-2137-10-97-367
thomas.leitzke@tiger-coatings.com

GREAT BRITAIN
TIGER Coatings UK LTD
Solihull, West Midlands, B93 9EG
phone 44-1564-778-866
office.gb@tiger-coatings.com

HUNGARY
TIGERLAKK Kft.
1183 Budapest
phone 36-61-293-90-20
office.hu@tiger-coatings.com

ITALY
TIGER Drylac Italia s.r.l.
24121 Bergamo
phone 39-35-413-35-80
office.it@tiger-coatings.com

LITHUANIA & LATVIA
UAB "LAKMALIT"
44299 Kaunas
phone 370-7-32-37-41-32-34-95
tiger@lakmalit.lt

POLAND
TIGER Coatings Poland SP. z o.o.
05-500 Piaseczno/Stara Lwiczna
phone 48-22-715-83-10
office.pl@tiger-coatings.com

SERBIA & MONTENEGRO
KLIO NS d.o.o.
21000 Novi Sad
phone 381-21-478-01-08
klio_ns@yahoo.com

SLOVAKIA
TIGERLAK Slovakia spol.s r.o.
902 01 Pezinok
phone 421-33-640-00-71
office.sk@tiger-coatings.com

SLOVENIA
T-Lotus d.o.o.
9240 Ljutomer
phone 386-2-583-18-79
kontakt@t-lotus.si

SPAIN
TIGER Coatings Spain S.L.
12003 Castellon de la Plana
phone 34-964-222-148
office.es@tiger-coatings.com

SWEDEN
TIGER Coatings Sweden AB
10231 Stockholm
phone 46-72-565-80-98
office.se@tiger-coatings.com

SWITZERLAND
Streicolor AG
CH-8502 Frauenfeld
phone 41-52-723-21-50
info@streicolor.ch

TURKEY
TIGER Coatings Turkey
Boya Ticaret Limited Şirketi
Ovaakca / BURSA / TURKIYE
phone 90-224-267-00-82
office.tr@tiger-coatings.com

UKRAINE
Leocolor Industry GmbH
Sacharova Str. 42 | 79012 Lviv
phone/fax 38-32-244-32-02
phone 38-32-244-32-02
office@leocolor.com.ua

AFRICA

EGYPT
TIGER Coatings Egypt (LTD)
Cairo, 11828, Egypt
phone 20-2-46-65-14-55
office.eg@tiger-coatings.com

SOUTH AFRICA
FERRO Industrial Products (PTY) LTD
Brakpan, South Africa
phone 27-11-746-4000
williams@ferrosa.co.za

ASIA

CHINA
TIGER Drylac (Taicang) Co.,Ltd.
Taicang, Jiangsu 215400
phone 86-512-5373-79-99
office.cn@tiger-coatings.com

TIGER Coatings (Chengdu) Co.,Ltd.
Xinjin, Chengdu, Sichuan
phone 86-28-68-61-27-26
office.cn@tiger-coatings.com

TIGER Coatings (Fogang) Co.,Ltd.
Fogang, Qingyuan, Guangdong
phone 86-76-34-88-57-77
office.cn@tiger-coatings.com

INDIA
Berger Paints India Ltd
Kolkata 700017
phone: 91-33-22-29-97-24
consumerfeedback@bergerindia.com

JAPAN
TIGER Drylac JAPAN K.K.
Sagamihara, 252-1135
phone 81-42-760-60-56
office.jp@tiger-coatings.com

TIGER Drylac JAPAN K.K. Osaka office
Nishinakajima Osaka, 532-0011
phone 81-6-63-01-12-25

MALAYSIA
TIGER Drylac MALAYSIA Sdn. Bhd.
50470, Kuala Lumpur
phone 60-3-79-81-40-70
g.lim@tiger-coatings.com

TAIWAN
Vigorousport Int. Co., Ltd.
Taichung
phone 886-4-23-82-21-23
office.tw@tiger-coatings.com

THAILAND
Grand Siam Commercial Co., Ltd.
Bangkok 10320
phone 66-2-691-62-74
apichart@samart.co.th

VIETNAM
TIGER Drylac Vietnam Co., Ltd.
Binh Duong Province
phone 84-650-375-83-70
office.vn@tiger-coatings.com

www.tiger-coatings.com



Member of

Powder
Coating
Institute



A BETTER FINISH. FOR A BETTER WORLD.