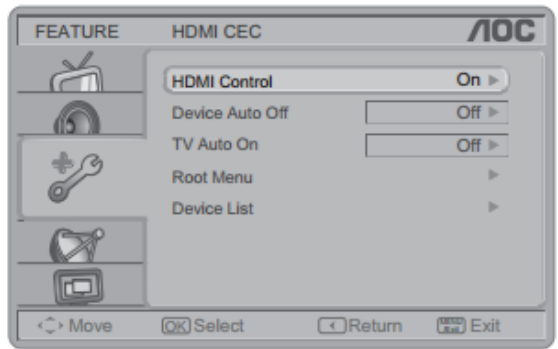



AOC – HDMI Control Setup

9. **HDMI CEC:** Set the HDMI Control to ON and this feature will enable the HDMI **CEC** function and your AOC HDTV will discover and communicate automatically with other compatible HDMI interfaced devices. Select ODD to disable this option.



1		Press MENU/EXIT to call out MENU.
2		Press ▲/▼ to select "Setup"  , and press OK .
3		Press ▲/▼ to select Setting item: HDMI Control and press OK to enter.
4		Press ▲/▼ to select Setting item: HDMI Control, Device Auto Off, TV Auto On, Device Menu Control, Device List, etc. and press OK to enter.
5		Press ◀/▶ to adjust.
6		Press MENU/EXIT again to exit.

Items	Description
HDMI Control	Enable or Disable HDMI Control.
Device Auto Off	Enable or Disable Device Auto Off. When you turn off the TV, all active CEC enabled devices on the HDMI inputs will go to Standby.
TV Auto On	Enable or Disable TV Auto On Pressing the "Play" button on the CEC enabled device will command the device to play, turn the TV on and the HDMI input, that the device is connected to, will become the active input source for the TV.
Root Menu	Accesses the menu of connected HDMI CEC-compatible device with your TV remote control.
Device List	List the device which enabled the HDMI CEC function.

Note: Not all devices with an HDMI connection have the CEC feature. Consult the instruction manuals for the device you are trying to control to confirm whether or not CEC is available.