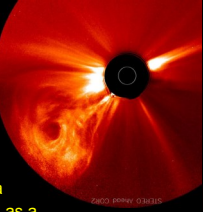


CROP CIRCLE ALIEN DECEPTIONS

ALIEN DISCLOSURE & DNA GENETIC ENGINEERING



The purpose of this illustration is to highlight the Avebury Dec 21, 2012 crop circle phenomena. It depicts the coming of a 2nd Sun and a Pole Shift due to a catastrophic expansion of the Sun's radial energies, radiation and/or flares. Based on the Planetary Alignment depicted, there are some strange and mysterious symbols still in dispute as to their meaning. This is only a suggestive analysis that could mark a significant Biblical fulfillment of what the Book of Revelation prophecies declare will take place in the prophetic future. There will be an object as big as a 'mountain' that will hit the Earth's ocean and cause 1/3 of the water to turn bitter. There will be a degree of heat so intense that it will burn up 1/3 of all the Earth's trees and grass. In this context, the authors of the crop circle(s) seem to be ready to initiate a full-on disclosure at an opportune time. This would be part of the Luciferian/NWO plan to present the 'LIE' that the LORD GOD YHWH states will be believed by in the Last Days. The 'Lie' will encompass an explanation to the Rapture and a promise to attempt to alter Humanity's genetic makeup. This illustration will consider the crop circle layout as compared to the actual Dec 21, 2012 3D model. A brief survey of the ramifications of the coming DNA alteration will be covered because perhaps the coming Mark of the Beast will thus affect a person's eternal redeemability.

PLANETARY ALIGNMENT

Dec 21-23, 2012 = **13**

Baktun 13.0.0.0.0



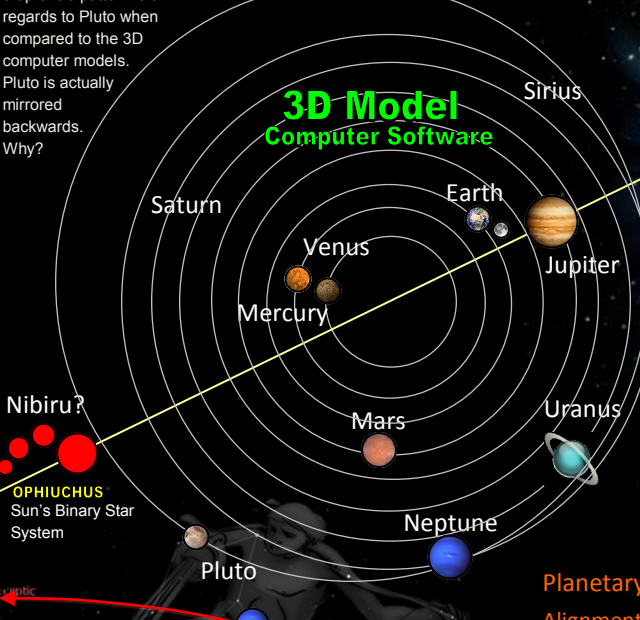
THE SATANIC STRATEGY
 Contact has been made with extra terrestrials. Crop circles are made over night. Some are beyond explanation while some are hoaxes, but a lot are without explanation as to the intricacies and symmetry. IF these are legitimate forms of communication, they are not coming from the Creator GOD YHWH. The Bible declares that GOD has spoken to us in the Last Days as SON. This excludes any 'new' revelation from False Prophets & 'christs' or Fallen Angels, or as such could be masquerading as 'Aliens'.

The World is at the point now as it was in the Days of Noah. There was interbreeding, genetic engineering amongst species as it is being done today with Stem Cells and cross species mutations in secret military bases. Such entities will at some point make full disclose to Humanity; posing as the 'Saviors' of Mankind. Perhaps this will occur after the Rapture. Such will promise to provide assistance in the transmutation of the whole human race by way of altering the human DNA code. This may possibly occur through the receiving of the *Mark of the Beast*. Such a 'Mark', aside for commerce, could also be used to alter the human DNA to such a degree that mankind will cease to be 'human' and redeemable; thus condemned eternally.



The Avebury Crop Circle appeared in 2 renderings. The first was plowed over, subsequently, the second and more intricate emerged. It showed the expansion of the Sun. It could be due to a Super Solar Flare or a burst of Radiation Energy field of sorts. Nonetheless it could have catastrophic consequences for the Earth if it is to occur in the near future. Some of the objects above have yet to be definitively deciphered.

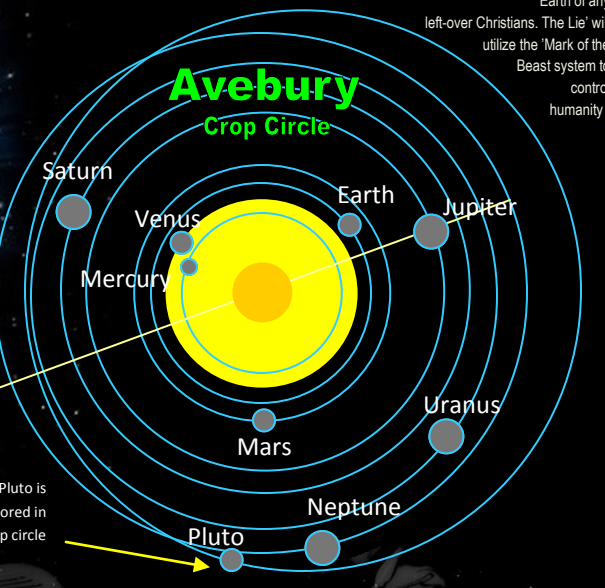
This specific Avebury crop circle anomaly is projecting the entrance of the 'Red Dragon', aka Nibiru-Planet X, the 2nd Sun. As a result, it could possibly thus cause a Pole Shift and a Super Solar Flare when it does occur. The 'light being' that have prepped humanity with such messages in crop circles, will be put to the test. If this scenario does not come to pass, it will be just another Luciferian deception communicated to mankind. Already the crop circle pattern is off in regards to Pluto when compared to the 3D computer models. Pluto is actually mirrored backwards. Why?



'Light Beings'

'ASCENDED MASTERS'
 Fallen Angels
 'Aliens'

According to the Bible, such 'Aliens' pose themselves as Light Beings, as they are spiritual and dwell in the other dimensions per Ephesians 2v14. These are evil Fallen Angels and their disembodied prodigy as a result of the Flood of Genesis 6. Presently, the threshold of evil and spiritual darkness on Earth is coinciding with the full disclosure and contact of these evil entities per the warning of Jesus Christ that it would be as 'in the Days of Noah.' The 'Lie' will be believed by most as even now many are believing and await their arrival and 'salvation'. After the Rapture, their promise will be to 'help' humanity 'cleanse' the Earth of any left-over Christians. The 'Lie' will utilize the 'Mark of the Beast' system to control humanity.



There are those that have allegedly stated that the 2nd Sun solar system has been photographed and recorded already. Then there are those that dismiss it because it cannot be seen by telescopes. These are valid arguing points. This illustration is not intending to argue either for or against the possible existence of Planet X, but to look at the Avebury crop circle phenomenon in terms of correlating Biblical prophecy.

It does seem to suggest the inevitable likelihood of such catastrophic events nonetheless. It also does correlate with the coming prophesized *Scroll Judgments* of the Book of Revelation that will occur at some point; perhaps in the very near future within this generation. If the increasing frequencies of earthquakes, solar flares, global warming, erratic weather, etc. are any indication that the crop circle depiction is going to happen, then the Earth and Humanity are in dire straits.



MARK OF THE BEAST SYSTEM

The reason the Bible explicitly explains that anyone during the Tribulation Period that takes the Mark of the Beast on either the hand or head is doomed to 'eternal condemnation' is because the 'Aliens' aka Lucifer will incorporate a genetic alteration to the Human DNA composition by introducing 'Genetically Modified Engineering' to such a degree that Humans will cease to be 100% Humans. This condition was the case for Noah's day. When the Bible states that he was 'pure' in his generation, it has a connotation that his DNA was not altered in some way. Christ only died for Humans as He was 100% human as well as 100% GOD the Creator.

As it was prevalent in the Days of Noah, perhaps the 'Aliens' after the Rapture will promise a better humanity, free of any diseases or ailments. This might sound great to Humanists, but it renders a Human, unable to be 'SAVED'. Christ only died to redeem Humanity, 100% humanity so much so that GOD the SON took on 'flesh' 100% for this very purpose, not for angels or other beings. Thus if by taking the Mark of the Beast, one's DNA is altered, that person will cease to be 100% human and thus redeemable. There is no evil or abomination in using technology for good, such as bionics, organ transplants, etc., but the coming access provided by 'alien' aka Fallen Angel technology as it was since Genesis 6 will alter humanity's eternal destiny.

Guanine
 Cytosine

Thymine
 Adenine



What is striking about this planetary configuration is associated with the number 13 in the following:

- 1) The 2nd Sun system will appear as a 'red' anomaly in the 13th Zodiac Sign of the Serpent Bearer, Ophiuchus.
- 2) The New Moon happens to be on the 13th of December 2012.
- 3) The date Baktun 13.0.0.0.0 will occur after the completion of Baktun 12 on 12:21:2012.



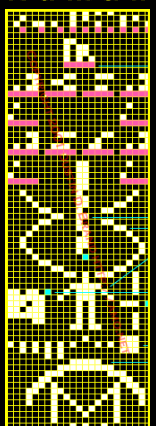
THE ANSWERS FROM THE STARS
 On Nov 16th, 1974, a binary coded sketch was sent out into space that basically had a makeup and pertinent information about Humanity and Earth. It was sent out from the Arecibo station in Puerto Rico, thus called the Arecibo Message. The message consisted of a 3 Terawatt narrow band binary code transmission. It was directed toward the M13 Globular Star Cluster in the constellation Hercules. The binary code was binary 0 for empty spaces or blocks and 1's for the solid blocks.

On Aug 14, 2001, there was a crop circle that had unique properties in its design. It notably appeared next to the UK's largest astronomical station. The 1st crop circle was characterizing by a recognizable human face. It was much reminiscent of the 'Face on Mars'. Perhaps it was a clue or hint that it came from Mars.

On Aug 17, 2001, 3 days later another crop circle near it appeared overnight. It is called the Arecibo Message Response. The Arecibo Message reply crop circle basically looked similar to the 1974 Arecibo plates and message except in a few distinctive ways. It was basically the response by said 'Aliens' in a description of what and who they are:

1. Silicon was highlighted instead of Carbon
2. The DNA had a 3rd strand
3. The height of Humanoid are around 4ft with larger heads
4. Humanoids inhabit the 3, 4 and the 5th planets
5. The quantity was counted at 25 billion

Human



Alien

