

# BROWNING®



# archery equipment

**COMPOUND BOWS**—Browning Compound Bows shoot your arrows as much as 50% faster than a recurve bow of equal draw weight. The system works much like a block and tackle—giving you a mechanical advantage as you draw the bow. Peak pull occurs at about  $\frac{2}{3}$  draw, and relaxes 18% to 25% at full draw. Which gives you a relaxed hold at full draw for steady aim and smooth release.

**BUSHMASTER COMPOUND\***— This extra-short compound bow was designed by Browning's Master Bowyer, Harry Drake, designer of equipment that set major World Flight Records. The Bushmaster measures a short 38½ inches from axle to axle. Its special offset, ventilated side plates reduce cable friction and increase cable-bowstring speed.

You can vary the draw weight from 45 to 60 pounds with the adjusting bolts. And you can adjust draw length from 27" to 33", depending on the model. The lightweight, high strength cast magnesium handle riser is equipped with an over-draw cut out. It's coated with an extremely durable, baked-on, no-slip vinyl finish. And it is pre-drilled to accept cushion plungers and micro-adjustable arrow rest plates. The limbs are a tough combination of maple and fiberglass, reinforced with Micarta limb tips. The axles and machined ratchet gears are fabricated from durable stainless steel. Twin ¼" x 28 accessory insert bushings allow the fitting of quivers and stabilizers. The Bushmaster is pre-drilled for Browning Hunting Sights and Compound Quivers.

28" Draw Length, Code # 872885  
29" Draw Length, Code # 872895  
30" Draw Length, Code # 872805  
31" Draw Length, Code # 872815

**COMPOUND HUNTER\***— Speed and accuracy. These are the characteristics of this great compound. It is only 47½ inches from axle to axle. The handle is lightweight, precision cast magnesium with an extremely durable, baked-on vinyl finish that gives you a non-slip grip. It's equipped with an over-draw cutout on the back side of the handle, so you can use slightly shorter, lighter arrows and achieve more speed. You can adjust the Compound Hunter's draw weight from 45 to 60 pounds and its draw length from 27" to 33" depending upon the model

you choose. Rugged, stainless steel axles and machined, stainless steel ratchet gears make the Hunter a very durable bow. The specially designed side plates minimize cable wear and pulley binding while they increase arrow speed. The limbs are composite fiberglass and maple with super strong Micarta limb tips. It's fitted with twin ¼" x 28 and standard 5/16" x 24 accessory insert bushings and is predrilled for quivers, bow sights and Berger Buttons and micro-adjustable arrow rests.

Code Number 8828 8928 9028 9128

Pre Set Draw Length  
for Ideal Performance 28" 29" 30" 31"

\*Manufactured Under Allen's Patent No.3,486,495



## Compound Woodsman

**COMPOUND WOODSMAN** \*The Woodsman's sleek looking laminated hardwood pistol-grip handle is covered with a comfortable, durable, baked-on weatherproof finish. It has offset, ventilated side plates which reduce cable friction and increase cable/bowstring speed. The Woodsman is equipped with a Sure-Fold arrow rest, twin  $\frac{1}{4}$ " x 28 and standard  $\frac{5}{16}$ " x 24 accessory insert bushings. It's built with rugged stainless steel axles and stainless steel ratchet gears for long, rustless wear. The limbs are a composite of fiberglass and maple. The Woodsman can shoot your arrows up to 50% faster than a recurve bow of equal draw weight. At full draw it gives you an 18% to 25% reduction in draw force, for longer, steadier holds. The Woodsman is 48 $\frac{1}{2}$ " long, and is adjustable in draw weight from 45 to 60 pounds.

28" draw length, Code #922885

29" draw length, Code #922895

30" draw length, Code #922805

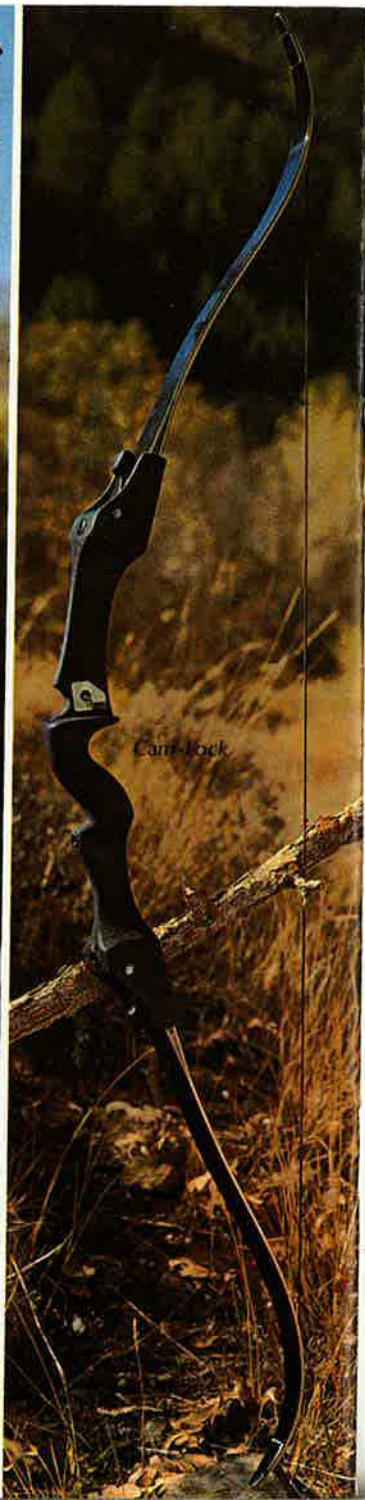
31" draw length, Code #922815

\*Manufactured Under Allen's Patent Number 3,486,495

**CAM-LOCK**—By just flipping the two cams downward with your fingers, the Cam-Lock takes down into a compact 21" x 4" package. So you can take it with you in your airplane, sports car, backpack or canoe. In seconds you can take it out of its bow bag, lock the limbs into place and be ready for hunting. This black beauty camouflages itself in any country. The jet black, composite hardwood and fiberglass limbs, in draw weights from 35 to 70 pounds, are perfectly balanced and matched for a smooth draw and a flat, fast trajectory. The high-strength, precision cast alloy handle riser has a full center shot window, full pistol grip, and an overdraw cutout, so you can use shorter, lighter arrows for more speed and accuracy. The Cam-Lock is fitted with twin  $\frac{1}{4}$ " x 28 and standard  $\frac{5}{16}$ " x 24 accessory insert bushings. It is drilled for use with Browning Hunting Sights, Super Berger Button or adjustable arrow rests, and comes equipped with the Browning Sure-Fold arrow rest.

Cam-Lock I, 56", Code #8128

Cam-Lock II, 60", Code #8228



**EXPLORER** — This high performance hunter has forward mass stabilizers built into the handle riser to achieve a steady aim and smooth release. Explorer I is a fast shooting 56 inches long and Explorer II is a powerful 62 inches long. Both models have East Indian Rosewood\* handle risers. These sculptured bows have a full pistol grip with thumb rest and full center shot sight window. They both have twin  $\frac{1}{4}$ " x 28 and standard  $\frac{5}{16}$ " x 24 accessory insert bushings.

Explorer I, Code Number 7928  
Explorer II, Code Number 8028

**COBRA**—This bow features strong broad limbs with a striking handle riser formed from laminations of deep grained East Indian Rosewood\* and hi-density phenolic. The hand filling full pistol grip and thumb rest assure comfortable shooting regardless of your style. Both the 50" Cobra I & 58" Cobra II come with twin  $\frac{1}{4}$ " x 28, and standard  $\frac{5}{16}$ " x 28 accessory insert bushings. Cobra I, Code Number 6528, Cobra II Code Number 6628.

**NOMAD STALKER**—This fine hunting bow features a full pistol grip handle riser sculptured from select hardwoods. The extra broad limbs are laminated maple veneer and unidirectional fiberglass. Both the 52" Stalker I and 58" Stalker II are equipped with twin,  $\frac{1}{4}$ " x 28" and standard  $\frac{5}{16}$ " x 24" accessory insert bushings.

Nomad Stalker I, Code No. 5528  
Nomad Stalker II, Code No. 5828

**NOMAD STALKER HUNTING SET** —This quality set includes the 52" Stalker I Bow and a half dozen Special Hunting Fiberglass, olive drab hunting arrows, a top grain leather shooting glove, a reinforced camouflage hunting arm guard, a silent, Kwiee bow quiver that holds 4 arrows, and 6 field points, six 3-blade hunting points and a stick of Ferr-L-Tite cement. Nomad Stalker I Hunting Set, Code 5628.

\*Or other fine hardwoods depending upon supply.



Explorer I



Cobra II

Nomad  
Stalker



Folding Target



Rover

Warp



Prep

Mohawk  
Set

Superglass  
Set



Mohawk

Superglass

**FOLDING TARGET**—One of the world's great target bows! Designed by Harry Drake to fold up into a compact 35" x 13" package. And unfold into a really smooth, accurate target bow. Its precision cast alloy handle riser has a very small grip. It's got a special, space-age vinyl coating that's baked on to give you a no-slip grip. The 8½" sight window is cut to the maximum past center. The composite fiberglass and select maple limbs are hand tillered. You can adjust the draw weight within a 4-pound range with the two large adjusting bolts. Twin bushings at the top and bottom of the bow back handle Browning Twin Stabilizers. A standard bushing holds all single rod stabilizers. And twin bushings hold counter balance weights. The Folding Target Bow includes a Sure-Fold Arrow Rest, Tip Protectors and is pre-drilled for Berger Buttons.

**ROVER**—Suitable for both hunting and target work, this bow features a handle riser of exotic hardwood with maple lamination stripes. The Rover is equipped with twin ¼" x 20" (target type) and a standard 5/16" x 24" accessory insert bushing. It has a full center shot sight window and pistol grip handle.

**WASP**—This is a handy hunter with a powerful cast and an economical price. Its 56-inch length makes it ideal for hunting thick cover. The handle riser is exotic hardwood and tapers into limb laminations of maple veneer and fiberglass. It's equipped with twin, ¼" x 28 and standard 5/16" x 24 accessory insert bushings.

**WASP HUNTING SET**—This set contains the rugged 56" Wasp Bow, six olive drab Port Orford cedar arrows and 6 field points and 6 interchangeable 3-blade hunting points. An all-purpose arm guard, top grain shooting glove, slip-on 6-arrow bow quiver, 24" deer target face and Ferr-L-Tite point cement complete this fine quality set. Wasp Hunting Set, Code Number 6328.

**PREP**—This rugged bow is ideal for beginning archers. The limbs are crafted from layers of maple veneer laminated to a back and face of strong fiberglass. The riser has a comfortable pistol grip and center shot sight window that combine with recurve limbs to offer fine performance at both target and field shooting.

**MOHAWK**—This is a quality bow for the young archer. The light maple riser has a semi-pistol grip reduced in size to fit a junior's hand and the limbs are especially contoured to facilitate use by junior archers.

**MOHAWK SET**—This set includes a Mohawk bow, an arm guard, a leather finger tab, six colorful Port Orford Cedar arrows and a target face. Mohawk Set, Code Number 1628.

**SUPER GLASS**—4 solid fiberglass bows to choose from, each constructed of thousands of glass fibers permanently bonded together with extreme heat and pressure. There's a rugged 48, 54 and 60-inch model to choose from. These bows are available separately or in complete sets which include 3 target arrows, "no-glov" nocking points, arm guard, quiver and a practice target. For the hunter there is a 54-inch Super Glass hunting bow with fine speed and power. This bow is also available in a complete set that includes a belt quiver, "no-glov" nocking points, arm guard, three field arrows and an animal target.

Model	Code Number	Draw Weights
Folding Target 68"	3728	35 to 50 lbs.
Folding Target 70"	3628	35 to 50 lbs.
Rover	3128	25 to 60 lbs.
Wasp	5428	35 to 70 lbs.
Prep	2028	20 to 45 lbs.
Mohawk	1528	25, 30 or 35 lbs.
Superglass 48"	012820	20 to 25 lbs.
Superglass 54"	022825	25 to 30 lbs.
Superglass 60"	032830	30 to 35 lbs.
Superglass 54" Hunter	042840	40 to 45 lbs.

# arrows

**BROWNING ALUMINUM HUNTING, FIELD AND TARGET ARROWS** are meticulously crafted from Easton Aluminum shafts. They are absolutely concentric and uniform. These tournament-tuned target and hunting arrows are capable of precision accuracy. All are carefully spined and matched to within 1/2 grain in weight, and furnished with BJ (Snap-On) Nocks and Olympic winning Pro-Fletcher.

**BROWNING GRADE-4 SELECT PORT ORFORD CEDAR HUNTING, FIELD AND TARGET ARROWS.** These cedar arrows have excellent flight characteristics and penetration, affording good accuracy for hunting, field and target shooting.

**GRADE 3 FIELD ARROWS AND GRADES 1 and 2 TARGET ARROWS IN PORT ORFORD CEDAR.** These arrows offer performance, real economy, and are excellent practice arrows.

Points Available	Length Increment 1"	Spine Increment 5 lbs.	Arrows Reference in Photograph
<b>BROWNING ALUMINUM ARROWS</b> (Easton Shafts)			
Browning XX75® Target (with Pro-Fletcher & BJ Nocks)	28-31	25-55	A
Browning 24SRT-X® Target (with Pro-Fletcher & BJ Nocks)	28-31	25-55	B
<b>BROWNING ANODIZED ALUMINUM</b>			
Select-A-Insert Installed (with Pro-Fletcher & BJ Nocks)	28-31	35-70	C
Select-A-Insert Installed (with Pro-Fletcher & BJ Nocks)	28-31	35-70	D
Select-A-Bear Razorhead® (with Pro-Fletcher & BJ Nocks)	28-31	35-70	E
6 Field (125 gr.)-Gold/6 Bear Razorhead®-O.D. (with Pro-Fletcher & BJ Nocks)	28-31	35-70	-
Select-A-Insert Separate (with Pro-Fletcher & BJ Nocks)	Max.	35-70	-
<b>BROWNING SELECT PORT ORFORD CEDAR ARROWS</b>			
<b>GRADE 4 CEDAR ARROWS</b>			
W/O Points Untapered	Max.	35-70	-
Field (125 gr.)	28-31	35-70	F
Select-A-Wood Adapter Installed (with Pro-Fletcher)	28-31	35-70	G
6-Field (125 gr.)-Yellow/6 Bear Razorhead®-O.D.	28-31	35-70	-
Bear Razorhead®	28-31	35-70	H
<b>GRADE 3 CEDAR ARROWS</b>			
Field (125 gr.)	29	35-55	I
<b>GRADE 2 CEDAR ARROWS</b>			
Target	28	Not Spined	J
<b>GRADE 1 CEDAR ARROWS</b>			
Target	26 & 28	Not Spined	K
FLU-FLU with Select-A-Wood Adapter Installed	29	35-50	L
<b>PIRANHA SOLID GLASS FISH ARROWS</b>			
	30	Not Spined	M

**FLU-FLU PORT ORFORD CEDAR ARROWS** come with our screw-in Select-A-Point system.

**BROWNING PIRANHA SOLID GLASS FISH ARROWS** have our Piranha point which reverses for easy removal.

**BROWNING'S NEW 4-WAY SELECT-A-POINT SYSTEM.** Anodized Aluminum, and Grade 4 Select Port Orford Cedar arrows are available with Browning's screw-in Select-A-Point system.

4-Way  
Select-A-Point  
System

# archery accessories

**GLOVES AND TABS**—High quality gloves are available with elastic back and wristband, adjustable snap, or velcro fastener and come in sizes for men or women. (Velcro, men's sizes only.) (1) With Cordovan finger stalls (men's sizes only). (3) With soft Cowhide stalls, or the (2) Velcro Hunter model. (Men's sizes only.) Two layer finger Tabs with an outer layer of select Cordovan. (4) Kantpinch Tab with replaceable hair calf face.

**ARM GUARDS**—Each is crafted from top grain cowhide and incorporates an inner steel stay to absorb string shock. Fully adjustable elastic arm straps with hook fastener. (6) Special oversize Hunting model (brown or camo.) (5) Comfortable All-Purpose models for men and ladies. Also a rugged Junior model. (7) Ventilated Velcro fastening model (brown or camo.).

**QUIVERS**—Hunting Quivers include top grain black leather Hunting Thigh Quiver. (8) And the rugged vinyl Camo. Hunting Thigh Quiver. Both of these quivers fasten to the thigh, hold six arrows and fit both right and left handed shooters. Bow quivers include: the (11) two-piece Kwieke Bow Quiver, and Kwieke Broadhead Cover. (10) the 7 arrow capacity, One and Two Piece Browning Bow Quivers. And (12) the Browning six arrow Slip-on Bow Quiver. Or the Two Piece Compound Bow Quiver. The Browning 5 and 7 arrow Side-Kick Quivers are made to adapt to almost any bow, recurve or compound. Top grain cowhide target quivers are

available in four models: the Challenge (13), the Small target and Rover (9). Durable black vinyl target quivers come in large (14) and small target models.

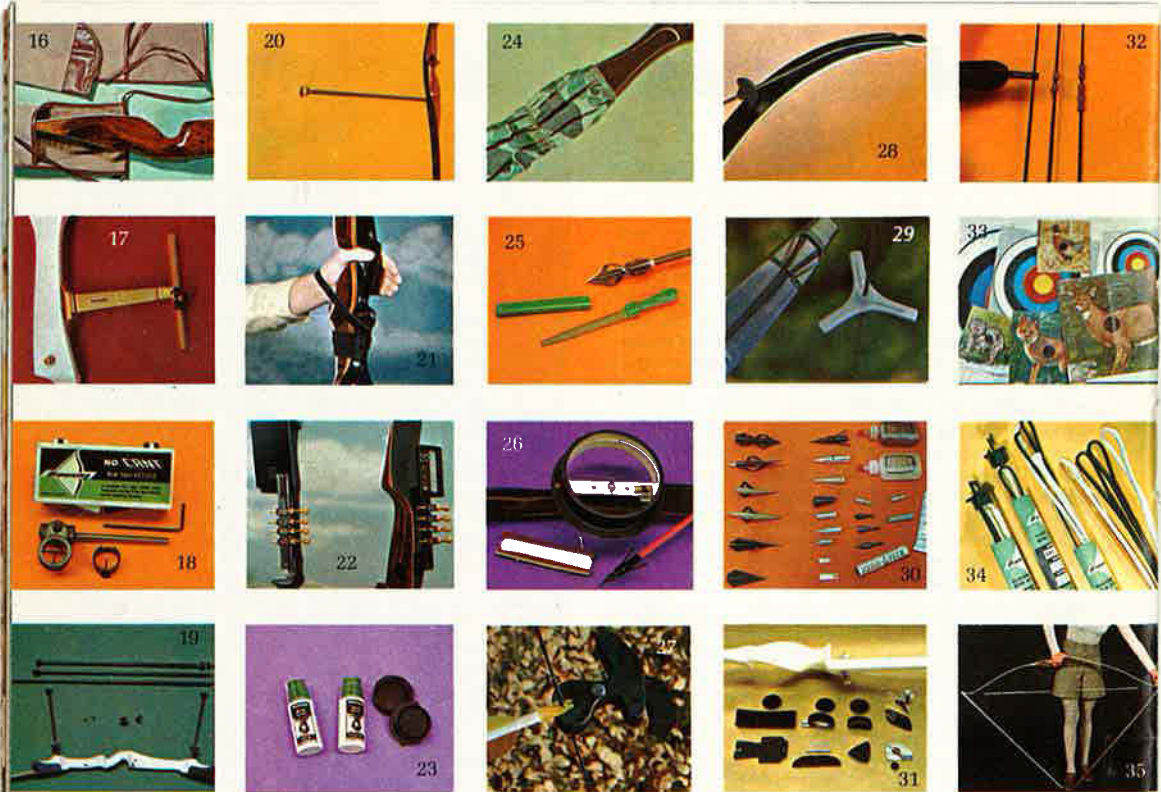
**BOW CASES**—(15) Top grade Black Vinyl Bow Cases, heavily padded and lined with soft fabric. Zippered accessories pocket. In three sizes, 48" to 70". Flexible Canvas Bow Case for take-down and compound bows, heavily padded interior and protective patch for Berger Button. Vinyl Bow Case for the Folding Target Bow. (16) Heavy duty Cloth Bow Cases from 50" to 70".

**TARGET ACCESSORIES**—(17) Reynold's removable bow sight with fully adjustable post. Increase sight radius with Browning Sight Extension. (18) No-Cant Bow Sight Reticule with the threaded adapter and two reticles. Improve accuracy with (19) Browning Select-A-Weight Twin, Adjustable Tension and (20) Tapered Stabilizers. (21) Improve release with Browning Bow Sling or Bow Saddle.

**HUNTING ACCESSORIES**—(22) Browning Hunting Bow Sight with color coded range finder or without range finder. (23) Attract deer, mask human odors with Liquid Food or Sex Buck Scent. (23) Felt Scent Vent attaches to clothing, disseminates scent. (24) Hide bow glare with two-piece Camo. Bow Cover. (25) The Browning Sharpening File comes with a handle and protective sheath that allows you to take it with you for in the field sharpening. The half round, fine tooth file is great for all points.







(26) Bow Fishing Set includes a lightweight aluminum reel with tape on bracket, 50 feet of 90 lb. line, a Browning Piranha fish arrow and point. You can also purchase line separate, reel and line separate and Piranha Point separate. (27) Browning Comanchero® II Hunting and Target Release is a must for the compound bow shooter, where release is so critical. A 1/2" offset insures proper string alignment. Trigger pull is adjustable from heavy to a "hair trigger" with an allen wrench provided. (28) Prevent bow tip fouling with super-size Brush Deflectors. (29) Dampen string noise with Kwikkee String Silencers and prevent damage to bow tips with a Bow Tip Protector, which fits any recurve bow. It holds the string in place and does not affect the bow action.

**ARROW COMPONENTS**—(30) The "4-Way" Select-A-Broadhead adapters are available installed in the Bear Razorhead®. This Browning system lets you change between threaded target, field, blunt or hunting tips instantly. Points screw on for sure tight fit. Nocks, points and Select-A-Points for hunting, target, field or fishing. Ferr-L-Tite Point Cement releases with heat. Point Fast Adhesive for permanent installation. Fletch-Tite Cement will bond fletching to arrow shafts. Arrow Tapering Tool accommodates four shaft sizes, with tapers for nocks,

field points or broadheads.

**ARROW RESTS AND HOLDERS**—(31) Arrow rests mount on the sight window. Choose from Hoyt Pro-Flex Rest, Hoyt Adjustable Micro-Rest Plate, the Browning Sure Fold, Brush Rest, Nylon Pile Rug Rest and arrow plate, or Mohawk Rug Rest. The Whisper Arrow Rest combines a stainless steel spring with calfskin patch to dampen arrow wobble. Kwik-Lok holds nocked arrows in place. The Browning Bow Hunter's Arrow Rest and Plate combines foam and synthetic calf hair. The Browning Super Berger Button compresses to absorb arrow wobble minimizing a bad release and improves accuracy.

**OTHER ACCESSORIES** — (32) Insure consistent nocking point with metal Nok-Set. Or soft rubber Nock Locks. (32) No-Glov gives permanent nocking point, eliminates need for glove. (33) Full color oil cloth skirted bullseye, and heavy tag animal Target Faces, 12" to 48". (34) Custom Dacron Bow Strings for all AMO bow length specifications. String Wax ideal for Dacron Strings. String your bow simply with the Bow Pal Stringer (35) and the Browning Compound Stringer which allows you to change strings quickly without having to take your compound bow all the way down.