



*Small, Serene, Simply Garnett.*

## City Commission Meeting **AGENDA** November 14, 2023, 6:00 P.M.

---

- I. **Call to Order of the Regularly Scheduled City Commission Meeting (6:00 p.m.)**
  - A. Pledge of Allegiance
  - B. Invocation, Chris Goetz, First Christian Church
- II. **Citizens to be Heard (Five-Minute Time Limit Per Person. Please state your name and address.)**
- III. **Governing Body Comments**
  - A. Commissioner Locke
  - B. Commissioner Cole
  - C. Mayor Sheahan
- IV. **Consent Agenda**
  - A. Approval of Minutes from October 24, 2023, Regular City Commission Meeting
  - B. Approval of Semi-Monthly Bills and Payroll in the amount of \$421,623.60
    - a. Includes two (2) Payrolls: 10/27 and 11/9.
- V. **Regular Business**
  - A. Consideration of Special Event Request for Hope Anthem Church.
  - B. Consideration of Special Event Request for Garnett Area Chamber of Commerce.
  - C. Consideration of the new Residency Requirement.
  - D. Consideration of Land of Land Acquisition.
- VI. **Discussion Items**
  - A. Christmas Parade – November 25<sup>th</sup>
  - B. Depot Maintenance
  - C. Sales Tax
  - D. City Manager Contract
  - E. IUS SET/Zenner Pilot
- VII. **Informational Items**
  - A. The Fall City Wide Brush Only Clean up will be held November 27 through December 1.
  - B. Small Business Saturday, hosted by The Garnett Area Chamber of Commerce, will be held on November 25.
  - C. The Garnett Fire Department Chili & Soup Supper, hosted by the Garnett Volunteer Fire Department, will be held on November 25.
  - D. The 52<sup>nd</sup> Annual Christmas Parade and Lighting Ceremony, hosted by The Garnett Area Chamber of Commerce, will be held on November 25.
  - E. “A Nice Family Christmas” Live dinner theatre performances, hosted by The Chamber Players Community Theatre, will be held December 1-3, and 7-10.
  - F. The 16<sup>th</sup> Annual Colony Christmas Parade, hosted by the Colony Christian Church, will be held on December 3.
  - G. The Holiday Homes Tour, hosted by the Friends of the Garnett Public Library, will be held on December 3.
  - H. The Holiday Boutique, The Kirk House, hosted by Garnett BPW, will be held on December 3.
- VIII. **Citizens to be Heard (Five-Minute Time Limit Per Person. Please state your name and address.)**
- IX. **Signing of Approved City Documents**
- X. **Adjournment**

The Governing Body of the City of Garnett met in regular session on October 24, 2023, at 6:00 p.m. with the following individuals present; Mayor, Jason Sheahan; City Commissioner's, Jody Cole, Mark Locke; City Clerk, Trish Brewer. City Manager, Travis Wilson and City Attorney Terry Solander were absent.

### **CALL TO ORDER**

Mayor Sheahan called the meeting to order at 6:00 p.m.

The Pledge of Allegiance was recited.

Vernon Yoder, Mount Ida Church gave the invocation.

### **CITIZENS TO BE HEARD (FIVE-MINUTE TIME LIMIT PER PERSON)**

Wayne Hulett thanked Commissioner Locke for getting him into the brush dump. Requested of the Commission to allow the brush dump to be open more than once a month for citizens, once a week.

### **GOVERNING BODY COMMENTS**

- *Commissioner Locke*

Thanked the Police Department and Emergency Responders for their good work in keeping the public safe this weekend. Please continue prayers for Terry Solander, Travis Wilson, and their families.

- *Commissioner Cole*

Stated she as well thanked the Police Department and Emergency Responders for their good work in keeping the public safe this weekend.

- *Mayor Sheahan*

No comment.

### **CONSENT AGENDA**

#### **A. Approval of Minutes from October 10, 2023, Regular City Commission Meeting**

#### **B. Approval of Semi-Monthly Bills and Payroll in the amount of \$236,274.97**

Commissioner Locke motioned to approve the consent agenda as presented.

Second by Commissioner Cole. Motion passed AYE (3) NAY (0)

### **REGULAR BUSINESS**

- **Consideration of the new Residency Requirement.**

### **DISCUSSION ITEMS**

- A. Depot Maintenance**
- B. Sales Tax**
- C. City Manager Contract**
- D. IUS SET/Zenner Pilot**

Mayor Sheahan motioned, in the absence of City Manager, Wilson, to move the regular business and discussion items A, B and D to the next scheduled meeting and add an executive session for item C.

Seconded by Commissioner Locke. Motion passed (3) AYE (0) NAY

### **INFORMATIONAL ITEMS**

- A. The Zombie Walk, 5K Run Festival, hosted by Masonfelt Comedy, will be held at the North Lake Park and Town Square on October 28.
- B. The Kansas Rails-To-Trails Fall Extravaganza, 100m/100k, 50m/50k run race, hosted by the Timer Guys will be held at the Prairie Spirit Rail Trail State Park on October 28.
- C. Light the Night Trunk-or-Treat, hosted by the First Christian Church, will be held on October 31.
- D. Don't forget to vote on Tuesday, November 7th!
- E. The Holiday Open House Weekend, hosted by Morning Mingle, will be held on November 10-11.
- F. The St. Rose School Craft Show & Bierock Sale, hosted by St. Rose School Support, will be held on Saturday, November 11, from 9:00 a.m. to 2:00 p.m.

- G. Small Business Saturday, hosted by The Garnett Area Chamber of Commerce, will be held on November 25.
- H. The Garnett Fire Department Chili & Soup Supper, hosted by the Garnett Volunteer Fire Department will be held on November 25.
- I. The 52nd Annual Christmas Parade and Lighting Ceremony, hosted by The Garnett Area Chamber of Commerce, will be held on November 25.

Note by Mayor: City Wide Cleanup will be October 30 – November 3. Corrections to original print. Items are to be at curbside Sunday night, not the alley, no brush.

**CITIZENS TO BE HEARD (FIVE-MINUTE TIME LIMIT PER PERSON)**

No public comment

**SIGNING OF DOCUMENTS APPROVED DURING THE COMMISSION MEETING.**

**Executive Session**

Mayor Sheahan motioned to recess into Executive Session to discuss matters pursuant to K.S.A. 75-4319 (1)(3)(6) for 20 minutes, starting at 6:10pm with the following present: Mayor Sheahan, Commissioner Cole, Commissioner Locke, City Clerk Brewer. Regular Session to resume at 6:30 pm.  
Commissioner Cole seconded. Motion passed (3) AYE (0) NAY

Commission exited Executive Session at 6:30pm with an additional motion to extend the executive session until 6:45pm. Commissioner Cole seconded the motion. Motion passed (3) AYE (0) NAY

Commission exited Executive Session at 6:45 pm with an additional motion by Commissioner Locke to extend Executive Session until 7:25pm. Commissioner Cole seconded the motion.  
Motion passed (3) AYE (0) NAY

Commission exited Executive Session at 7:25pm.

Mayor Sheahan called the open session back to order and stated no action taken within executive session.

**ADJOURNMENT**

With no further business before The Governing Body, Commissioner Locke made a motion to adjourn the meeting. Commissioner Cole seconded the motion. Motion passed (3) AYE (0) NAY

Meeting adjourned at 7:26 p.m.

---

Mayor

---

City Clerk

## **POLICY 14 RESIDENCY**

### **14.1: DEPARTMENT HEADS**

All department heads are required to live within a thirty (30) minute response time of the City of Garnett. The thirty (30) minute response time will be evaluated based upon driving the shortest available route at the legal rate of speed.

### **14.2: ON CALL POSITIONS**

All employees that fill an On Call Position are required to live within a thirty (30) minute response time of the City of Garnett. The thirty (30) minute response time will be evaluated based upon driving the shortest available route at the legal rate of speed. These positions include but are not limited to the Street Department, Gas Department, Water Department, Electric Distribution Department, and Sewer Department.

### **14.3 ALL OTHER EMPLOYEES**

All employees that are not in a department head level position or in an on call position have no residency requirement.

The Depot was saved from demolition in 1987 by the then city manager Rick Doran.

In June of 1992 the city of Garnett applied for grants to renovate and enhance the depot. Grants were received and with the grant funds along with funds received from fundraisers in the community the depot was renovated and enhanced in 1996.

The Santa Fe Depot serves as the trailhead for the 33 mile PSRT and serves the community as a tourism information center and meeting venue.

Many out of town visitors visit the depot each year. It is important that the Depot be maintained and kept neat and clean to show case our town and let the visitors know we care about and are proud of our town.

Repairs and maintenance have been performed to the exterior of the depot but it has been about 30 years since any major repair or maintenance has been completed to the interior. To Maintain the Depot and its history it is time to consider a major repair and maintenance of the interior.

Some needed repairs include:

Short Term Goals:

- Refinish wood trim by drinking fountain

- Repair wall in women's bathroom where paper towel holder was moved

- Refinish windows & sills

- Clean & paint walls

Long Term Goal:

- Refinish floor

- New door on women's bathroom

Discuss how to accomplish above goals.



## LTE-M Cellular Devices

Sustainable Efficiency. Future Ready.



Featuring  
Solar Boost  
Technology!

### X330W LTE-M CELLULAR AMI WATER ENDPOINT

The first endpoint to leverage the power of the sun to extend battery life, SET leads utility management innovation in clean renewable energy, and excellence in energy management. Built on industry standards, the X330W meter neutral endpoint for water utilities redefines simplicity, performance, safety, environmental endurance, and savings. SET's feature rich head-end analytics, expert professional services, and pre-installed multi-carrier cellular infrastructure are included. The X330W breathes new life into your business case for transitioning from fixed-base AMI or legacy AMR. SET delivers long battery life and performance with enhanced operational excellence.

#### Solar Benefits

SET's 3 series product line brings clean renewable energy to AMI devices. SET uses solar power to offer unmatched product warranties and system life expectancy. Enhancing the return on investment with a longer life cycle for utilities while lowering battery end-of-life issues and the footprint of recycling lithium batteries.

#### Advanced Software

SET's software architecture allows seamless integration with existing systems during a system transition so any utility can achieve a single view of their data. This feature is especially helpful during a multi-year project. SET software provides advanced functionality, user configurable alarms, alerts, and the ability to change settings remotely on the AMI water endpoints.

#### Cellular Benefits

X330W cellular endpoints operate on existing public and private LTE-M networks to provide two-way connectivity. Negating the need for the construction and maintenance of traditional RF networks. SET's multi-carrier solution does not require any ongoing infrastructure maintenance by the utility. The utilization of a secure and redundant existing cellular network infrastructure automatically become an extension of the utility's resources.

#### Meter Neutral Endpoints

SET endpoints are compatible with all major meter brands, and can be wired to any encoded output register. With the SET solution, utilities can have meters of choice reporting into a single SET system. SET fully accommodates retrofits and new installations.

### X330W ENDPOINT FEATURES

- Multi-Carrier LTE-M Cellular
- Solar and Battery Power
- 120 Days Storage of Hourly Data
- 3X Transmissions Per Day  
(with 1 Configurable)
- Deployment Simplicity
- Encrypted Data
- 100% Encoded Meter Compatibility
- Remotely Configurable
- Over-the-air Firmware

## TECHNICAL SPECIFICATIONS

<b>Communication Type</b>	Two-way Multi-Carrier, Industry Standard LTE-M Cellular. 700MHz-1.9Ghz Licensed. Bluetooth 5.0 included standard on every endpoint		
<b>Power</b>	3.6V Lithium Battery + HLC, Solar and SET patented Power Management Platform		
<b>Environmental</b>	-30° to 65° C / -22° to 150°F, IP67		
<b>Connection Options</b>	Nicor, Itron, Bare Wire		
<b>Transmissions</b>	Default 3X per Day Weekday, 1 Configurable 1X per day Weekend		
<b>Installation</b>	Wireless BLE 2.0 from any Android Device		
<b>Leak Detection</b>	Endpoints can detect leaks via configurable thresholds in the SET software		
<b>Reverse / Zero Flow Detection</b>	Reverse and zero flow is detected on all endpoints connected to an encoded output meter. Where register values reverse or are zero, flags are transmitted via status output from the meter		
<b>Data Logging</b>	Endpoints store up to 120 days of hourly meter reads		
<b>Data Security</b>	Endpoint data is encrypted during transmission using AES 256		
<b>Theft or Cut Wire Detector</b>	If wire is cut an alarm will be sent via the SET software notifying operational staff		
<b>Encoded Meter Compatibility: Meter Neutral</b>	Diehl Sensus Neptune Badger	Master Meter Kamstrup Honeywell Zenner	RG3 Hersey Mueller Siemens

All SET Endpoints comply with Part 15, Part 22, Part 24, and Part 27 of the FCC Rules. No license required by the utility to operate SET devices.

**Electric. Water. Gas.**  
**Sustainable Efficiency. Future Ready.**

**Smart Earth Technologies (SET)**  
**2810 Caribou Ct., Ste. 140, Carlsbad, CA 92010**  
**877.515.7627 | [www.smartearthtechnologies.com](http://www.smartearthtechnologies.com) | [info@smartearth.net](mailto:info@smartearth.net)**



**LTE-M Cellular Devices**  
Sustainable Efficiency. Future Ready.

**Featuring  
Solar Boost  
Technology!**



## X330G LTE-M CELLULAR AMI GAS ENDPOINT

The first endpoint to leverage the power of the sun to extend battery life, SET leads utility management innovation in clean renewable energy, and excellence in energy management. The X330G redefines simplicity, performance, safety, environmental endurance, and total-cost-of-ownership (TCO) savings for your upgrade to next generation advanced metering. SET's feature rich head-end analytics, expert professional services, and pre-installed multi-carrier cellular infrastructure are included. The X330G breathes new life into your business case for transitioning from fixed-base AMI or legacy AMR. SET delivers long battery life and performance with enhanced operational excellence.

### Solar Benefits

SET's 3 series product line brings clean renewable energy to AMI devices. SET uses solar power to offer unmatched product warranties and system life expectancy. Enhancing the return on investment with a longer life cycle for utilities while lowering battery end-of-life issues and the footprint of recycling lithium batteries.

### Advanced Software

SET's software architecture allows seamless integration with existing systems during a system transition so any utility can achieve a single view of their data. This feature is especially helpful during a multi-year project. SET software provides advanced functionality, user configurable alarms, alerts, and the ability to change settings remotely on the AMI gas endpoints.

### Cellular Benefits

X330G cellular endpoints operate on existing public and private LTE-M networks to provide two-way connectivity. Negating the need for the construction and maintenance of traditional RF networks, SET's multi-carrier solution does not require any ongoing infrastructure maintenance by the utility. The utilization of a secure and redundant existing cellular network infrastructure automatically become an extension of the utility's resources.

### Meter Neutral Endpoints

SET endpoints are the only AMI cellular based solution compatible with multiple gas meter brands. With the SET solution, utilities can have meters of choice reporting into a single SET system. SET fully accommodates retrofits and new installations.

## X330G ENDPOINT FEATURES

- Multi-Carrier LTE-M Worldwide Cellular
- Solar and Battery Power
- Industry Standard Class 1 / Div 2 Safety
- 3X Transmissions Per Day (with 1 Configurable)
- Deployment Simplicity
- 120 Days Storage of Hourly Data
- Encrypted Data
- Remotely Configurable
- Over-the-air Firmware



## TECHNICAL SPECIFICATIONS

<b>Communication Type</b>	Two-way Multi-Carrier, Industry Standard LTE-M Cellular. 700MHz-1.9Ghz Licensed. Bluetooth 5.0 included standard on every endpoint
<b>Power</b>	3.6V Lithium Battery + HLC, Solar and SET Patented Power Management Platform
<b>Environmental</b>	-30° to 65° C / -22° to 150°F, IP65
<b>Data Logging</b>	Endpoints store up to 120 days of hourly meter reads
<b>Transmissions</b>	Default 3X per day during weekdays (with 1 Configurable), 1X on weekends
<b>Installation</b>	Wireless BLE 2.0 from any Android Device
<b>Data Security</b>	Endpoint data is encrypted during transmission using AES 256

## GAS METER COMPATABILITY

### X330G-EA (Elster/American Retrofittable) Aluminum Case

METER MODEL	PRODUCTION DATES
AL175	1958 – 1993
AT175	1967 – 1984
ALC175	1964 – 2001
AT210	1967 –
AL225	N / A
AL250	1957 – 1985
AR250	2000 – 2005
AC250	1961 –
AT250	1968 –
AM250	1985 –
AL310	1979 – 1985
AL350	1979 – 1985
AT350	1969 – 1999
AL425	1968 –
AC630	1997 –

### X330G-SR (Sensus/Rockwell Retrofittable)

METER MODEL	PRODUCTION DATES
R175	1937 – 1979
R200	1977 – 1995
RT200	N / A
RT230	1977 – 2000
R275	1977 –
RT275	1977 – 2000
R315	1977 –
R250	1955 – 1979
310	1955 – 1979
S200	1980 –
175S	1956 – 1977
S120	1977 – 1980
T120	1977 – 1980
T110	1969 – 1977
S110	1969 – 1977
415	1953 –
RT100	N / A
RT360	1977 – 2000
MR8	1977 –
MR12	1953 –

All SET Endpoints comply with Part 15, Part 22, Part 24, and Part 27 of the FCC Rules. No license required by the utility to operate SET devices.

**Electric. Water. Gas.**  
**Sustainable Efficiency. Future Ready.**

**Smart Earth Technologies (SET)**  
**2810 Caribou Ct., Ste. 140, Carlsbad, CA 92010**  
**877.515.7627 | [www.smartearthtechnologies.com](http://www.smartearthtechnologies.com) | [info@smartearth.net](mailto:info@smartearth.net)**



## X330W LIMITED WARRANTY

This warranty is not transferable and is extended only to utilities, municipalities, other commercial users and authorized distributors, hereafter referred to as "Customer" and does NOT apply to consumers or any person or entity who is not an original Customer of the Company or its authorized distributors.

**RADIO EQUIPMENT.** As used herein "Radio Equipment" means the two-way cellular radio and components thereof as delivered to Customer by SET herewith, the components of each radio being the plastic enclosure, printed circuit board, connecting cables and installed firmware.

**BATTERY EQUIPMENT.** As used herein "Battery Equipment" means the battery in the X330W Endpoint.

**WARRANTY.** SET warrants, to Customer only, that the Radio Equipment which is delivered to Customer herewith will be of the kind described herein and will be free of defects in workmanship or material for a period of twenty (20) years from the date of initial delivery to Purchaser. Should any failure to conform to this limited warranty occur within twenty (20) years after the date of the initial delivery to Purchaser, SET will, subject to your compliance with SET's notification and substantiation procedures described below, correct such defect(s) by suitable repair or replacement of the defective Radio Equipment or component thereof at the applicable SET Expense Commitment as set forth in the table below. This limited warranty is exclusive and is in lieu of any implied warranty of merchantability, fitness for a particular purpose or other warranty of quality, whether expressed or implied. Correction of non-conformities, in the manner and for the period of time provided herein, shall constitute fulfillment of all liabilities of SET to Customer, with respect to the Radio Equipment, whether based on contract, negligence, strict tort or otherwise.

**WARRANTY EXCLUSIONS.** This limited warranty does not cover any Radio Equipment that has not been stored, installed, maintained and operated in accordance with both SET's maintenance requirements and standard industry practice. Furthermore, this limited warranty shall not apply to any Radio Equipment that is damaged due to abuse, neglect, misuse, fire, accident, collision, explosion, theft, alteration, improper installation, use of special additives, or any unauthorized attempt to repair. When operated outside of all recommended settings, warranty is subject to being null and void.

**NOTIFICATION AND SUBSTANTIATION OF WARRANTY CLAIM.** If Customer believes that any defect in workmanship and/or materials appears within the twenty (20) year limited warranty period to any Radio Equipment to which this warranty applies, Customer shall notify SET of such claim by contacting SET Customer Service and going through the Return Merchandise Authorization (RMA) procedures. Customer shall deliver the subject Radio Equipment to SET, at the address below, for testing and substantiation of such claim to SET's reasonable satisfaction via the RMA process.

**LIMITATION OF LIABILITY.** SET shall not under any circumstances be liable for special or consequential damages such as, but not limited to, damages or to loss of property or equipment other than Radio Equipment, loss of profits or revenue, cost of capital, cost of purchased or replacement goods, or claims of customers of Customer. The remedies of Customer, and any and all others, set forth herein are exclusive, and the liability of SET with respect to same shall not exceed the price of the Radio Equipment upon which such liability is based. It is the Customer's responsibility to confirm that the Radio Equipment satisfies local codes and standards.

SET shall be responsible for the following percentages of the aggregate cost of the repair or replacement of any Radio Equipment to which this limited warranty applies (the "SET Expense Commitment"):

Radio Equipment WARRANTY PERIOD (YEARS)	SET EXPENSE COMMITMENT
YEARS 0 - 15	100% REPLACEMENT
YEAR 16-17	70% REPLACEMENT
YEAR 18	50% REPLACEMENT
YEAR 19	30% REPLACEMENT
YEAR 20	10% REPLACEMENT

Battery Equipment WARRANTY PERIOD (YEARS)	SET EXPENSE COMMITMENT
YEARS 0 - 20	100% REPLACEMENT

## ZENNER Stealth Ultrasonic Residential Meters

Model: ZSUR

Sizes 5/8", 3/4", 1", 1-1/2" and 2"

**INTRODUCTION:** ZENNER Ultrasonic Residential Meters are designed for applications where high accuracy, long life and a dynamic flow range is desired. The highly advanced, all-digital technology achieves precise measurement without any moving parts, ensuring optimum revenue without compromised performance over time. These meters are used for the measurement of both potable and non-potable clean water in commercial and industrial settings and are capable of bi-directional flow measurement. The meter design has minimal head loss, decreasing pressure complaints from customers and reducing pumping costs for the utility. An industry leading sampling rate of 4 times per second, ensures you are picking up flow changes as they occur making the ZENNER Ultrasonic Residential Meter the most accurate ultrasonic meter in the industry.



ZSUR03

**OPERATION:** ZENNER Ultrasonic Residential Meters use solid state, sound measuring technology to measure instantaneous flow and calculate cumulative flow volume. The LCD display has two rows. The first row shows total volume, where it is factory programmed for US Gallons, Cubic Feet or Cubic Meters. The second row displays additional information such as rate of flow, flow direction, remaining battery life, leak alarms, empty pipe alerts, etc. These meters are capable of ultra precise leak registration with low flow sensitivity as low as .03 GPM.

**CONSTRUCTION:** ZENNER Ultrasonic Residential Meters consist of three basic components: The tube, electronics & display package, and two transducers. The tube is made of lead free bronze.

**COMMUNICATION:** ZENNER Ultrasonic Residential Meters have a universal communication protocol package capable of producing outputs compatible for use with Encoded systems. These meters are designed to be connected to any existing AMR/AMI system.

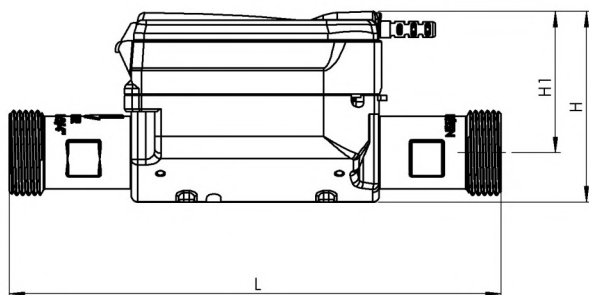
**MAINTENANCE:** ZENNER Ultrasonic Residential Meters are engineered and manufactured to provide long-term service and operate virtually maintenance free. There are no moving parts to service. The battery pack is designed for easy user replacement. It does not require a return to a ZENNER facility for replacement.

**CONFORMANCE:** ZENNER Ultrasonic Residential Meters are tested and comply with AWWA Standards C715 and C750. These Meters comply with the lead free provisions of the Safe Drinking Water Act and are certified to NSF/ANSI Standards 61 and 372.

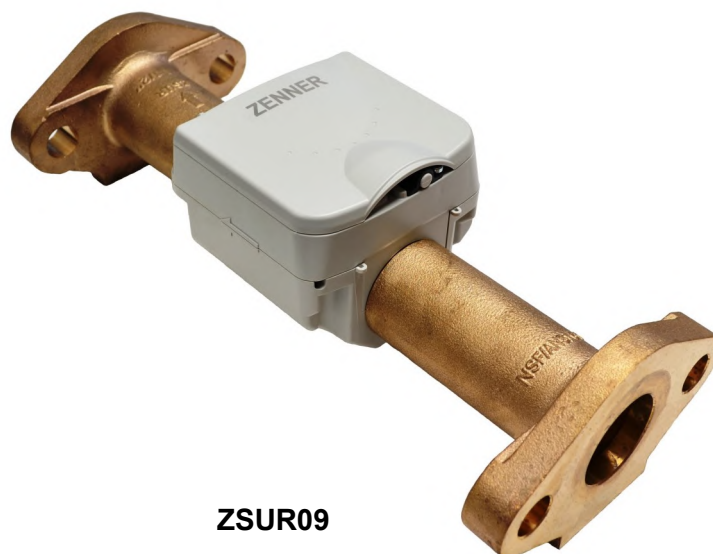
**INSTALLATION:** ZENNER Ultrasonic Residential Meters are designed to fit the same laying length as most standard multi-jet and positive displacement meters. With no moving parts to damage, these meters can be used safely and accurately with or without a strainer. These meters are submersible and exceed IP68 standards. These meters can be installed in any position, including horizontal and vertical.

**CONNECTIONS:** These meters have been designed with ease of installation in mind through the use of built-in wrench pads on meter sizes 5/8" through 1". Tailpiece/Unions for installations of meters are available as an option for various pipe types, sizes, and misaligned pipes.

MODEL		ZSUR01	ZSUR02	ZSUR03	ZSUR07	ZSUR09	ZSUR12
SIZE		5/8 x 1/2	5/8 x 3/4	3/4" Short	1"	1-1/2" Flanged	2" Flanged
Maximum continuous	USGPM	25	35	35	55	120	175
High flow rate	USGPM	25	35	35	55	120	175
Low flow rate	USGPM	.06	.06	.06	.12	.25	.50
Start-up flow rate	USGPM	.03	.03	.03	.06	.12	.25
Maximum working pressure	P.S.I.	225	225	225	225	225	225
Pressure loss at the high flow rate	P.S.I.	18	10	10	7	3	5
Environmental temperature limits	Deg. F	40 - 122	40 - 122	40 - 122	40 - 122	40 - 122	40 - 122
Length	Inches	7 1/2	7 1/2	7 1/2	10 3/4	13	17
Height (H1)	Inches	2 3/16	2 3/16	2 3/16	2 1/4	2 1/2	2 1/2
Height (H)	Inches	2 15/16	2 15/16	2 15/16	3 1/16	4 1/8	4 1/2
Width	Inches	3 9/16	3 9/16	3 9/16	4 1/4	5 1/2	6
Weight	Pounds	1.6	1.8	1.8	2.6	9	11



**ZSUR07**



**ZSUR09**

DEPARTMENT	FUND	VENDOR NAME	DESCRIPTION	AMOUNT_
REVENUES	GENERAL	KING, BECKY	THC REIMB HALF OF TIME PD	15.00_
			TOTAL:	15.00
GOVERNMENT ADMINISTRAT	GENERAL	BRIGHTSPEED COMMUNICATIONS	CITY HALL #313191149	115.32
		DIGITAL CONNECTIONS, INC.	CITY HALL/COM DEV COPIES	824.30
		GARNETT POST OFFICE	NOV UTILITY BILLING	700.00
		GARNETT PUBLISHING, INC.	TREASURER REPORT	158.50
		HAMPEL OIL DISTRIBUTORS, INC.	FUEL SPLIT	29.80
		PROPIO LS, LLC	TELEPHONE INTERPRETATION	6.50
		TRI-STATE PUBLIC SAFETY	AMBER LIGHT/GASKET KIT	248.95
		JESSE T RANDALL, ATTY	10.12.23 COURT SPEC PROSEC	343.75
		KANSAS STATE TREASURER	KANSAS STATE TREASURER	1,717.50
		NAVRAT'S	WINDOW ENVELOPES (1 CASE)	782.35
			COPY PAPER (60 REAM)	165.87
			60# WHITE OFFSET	124.00
		RYAN WALTER DBA	EOM SERVICES	8.75
		STANION WHOLESALE ELECT. CO.	COMMISSION RM MONITOR/CABL	74.63
		TYLER TECHNOLOGIES, INC.	LICENSE/SEB LICENSE	5,272.66
			HARDWARE SUPPORT	1,443.59
		VISA - CARD SERVICES	VISA - GOOGLE SUITE	575.30
			1095-C FORM/MAIL	17.45
			VISA- SPLIT	36.13
			VISA-SPLIT	57.71
			ADOBE SPLIT	21.49
			MICROSOFT SPLIT	26.40
		VERIZON	CELL PHONE SPLIT	68.76_
			TOTAL:	12,819.71
COMMUNITY DEVELOPMENT	GENERAL	COUNTRYSIDE VET CLINIC, INC.	CAT BOARD/EUTHANASIA/DISPO	71.00
			CAT BOARD/EUTHANASIA/DISPO	131.00
			CAT BOARD/EUTHANASIA/DISPO	131.00
		DIGITAL CONNECTIONS, INC.	CITY HALL/COM DEV COPIES	824.30
		HAMPEL OIL DISTRIBUTORS, INC.	FUEL SPLIT	38.45
		EVERGY	COM DEV #7745674439	26.00
		NAVRAT'S	COPY PAPER (60 REAM)	64.02
		RAINBOW FIREWORKS, INC.	RAINBOW FIREWORKS, INC.	3,500.00
		RYAN WALTER DBA	EOM SERVICES	5.00
			EOM SERVICES	15.00
		VISA - CARD SERVICES	VISA-SPLIT	442.00
			VISA-TOWN TALK POSTAGE	456.39
			GRANT WEBINAR	495.00
			GODADDY	3,559.87
			VISA-SPLIT	119.97
			VISA - CARD SPLIT	21.49
			MICROSOFT SPLIT	9.90
		VERIZON	CELL PHONE SPLIT	87.62_
			TOTAL:	9,998.01
PARKS, RECREATION & CE	GENERAL	D & S SANITATION LLC	CAMPGRD/SOCCER/BOY SCOUT T	255.00
			CAMPBGROUND/SOCCER TOILET	170.00
		DON'S AUTOMOTIVE	F-550 (PARKS)	320.00
		GERKEN RENT-ALL, INC	NORTH LAKE TOILETS (5)	357.50
			RESERVOIR (6) TOILETS	627.00
		TYNDALE COMPANY	B DAVIS - PARK DIRECTOR	85.00
		MCSPADDEN, ANGELA	NOV ZUMBA CLASSES	60.00
		ZIMMERMAN, KATHY	40 @5.00 X 70%	140.00

DEPARTMENT	FUND	VENDOR NAME	DESCRIPTION	AMOUNT
		WHITE CAP SUPPLY HOLDINGS, LLC	24" DIAMETER FLAG POLE N L	74.00
		HEDDING, LINDA	REIMB CAMPING FEE-CORNSTOC	50.00
		EVERGY	CAMPSITES #5102657023	45.72
			CAMPSITE #0638664876	25.95
			CAMPSITE #9127811310	59.23
		MILLER HARDWARE	PARK SPLIT	20.77
			PARK SPLIT	60.35
			PARK SPLIT	99.80
			PARK SPLIT	170.34
			PARK SPLIT	7.99
		NAVRAT'S	COPY PAPER (60 REAM)	20.37
		RYAN WALTER DBA	EOM SERVICES	30.00
			EOM SERVICES	30.00
			EOM SERVICES	30.00
		SAM'S CLUB	FEES	39.99
		VALIDITY SCREENING SOLUTIONS	EMPLOYEE BACKGROUND	95.70
		VISA - CARD SERVICES	VISA SPLIT	13.19
			VISA SPLIT	82.38
			VISA SPLIT	61.31
			VISA SPLIT	150.85
			VISA SPLIT	9.89
			VISA SPLIT	215.15
			MICROSOFT SPLIT	3.30
		WITTMAN NAPA AUTO PARTS	CITY SPLIT	5.26
			CITY SPLIT	14.38
			CITY SPLIT	85.99
		KLEHAMMER, BRENDA JE'NELLE	OCT YOGA 17@15.00	255.00
		SEELEY, DEBRA	REIMB CAMPING FEE-CORNSTOC	100.00
			TOTAL:	3,871.41
STREET & STORMWATER	GENERAL	ANDERSON CO SOLID WASTE	C&D TONNAGE	268.11
		GARNETT HOME CENTER	TORPEDO LEVEL	7.49
			HOSE BARS	3.79
		HAMPEL OIL DISTRIBUTORS, INC.	FUEL SPLIT	190.80
			ON ROAD SPLIT	53.78
		WKI EMPORIA KENWORTH	DIESEL WINTERIZATION	275.84
		SNAP-ON CREDIT LLC	OCT MONTHLY	46.75
		BAUMAN BROTHERS FARMS LLC	FLASHER	19.70
			KEY PL B102/WIRE	485.64
		KEY EQUIPMENT & SUPPLY COMPANY	BELT TENSIONER/AP42-BELT	433.17
		MILLER HARDWARE	STREET SPLIT	461.17
			STREET SPLIT	38.48
			STREET SPLIT	93.50
			STREET SPLIT	59.75
		NAVRAT'S	COPY PAPER (60 REAM)	6.79
		RYAN WALTER DBA	EOM SERVICES	15.00
		VISA - CARD SERVICES	VISA SPLIT	24.59
			VISA SPLIT	4.73
			VISA SPLIT	30.22
			VISA SPLIT	81.00
			VISA SPLIT	67.19
			MICROSOFT SPLIT	0.66
		WITTMAN NAPA AUTO PARTS	CITY SPLIT	3.76
			CITY SPLIT	29.88
			CITY SPLIT	43.65
			TOTAL:	2,745.44

DEPARTMENT	FUND	VENDOR NAME	DESCRIPTION	AMOUNT_
MUNICIPAL AIRPORT	AIRPORT	SCHETTLER, PAT VISA - CARD SERVICES	NOV WAGES	2,507.96
			VISA SPLIT	12.25
			VISA SPLIT	87.47
			VISA SPLIT	253.45
		VERIZON	CELL PHONE SPLIT	41.46
			TOTAL:	2,902.59
LIBRARY	LIBRARY	DIGITAL CONNECTIONS, INC. LUTZ, CHARLOTTE RYAN WALTER DBA VISA - CARD SERVICES	LIBRARY COPIES	78.96
			REIMB MILEAGE PARSONS	98.25
			EOM SERVICES	30.00
			VISA SPLIT	24.95
			VISA SPLIT	80.51
			VISA SPLIT	16.78
			TOTAL:	329.45
FIRE DEPARTMENT	PUBLIC SAFETY	HAYS FIRE AND RESCUE SALES & SERVICE L NFFA RYAN WALTER DBA VISA - CARD SERVICES	PUMP TESTS (3)	1,425.00
			921 GUIDE FIRE/EXPLOSIVE H	164.95
			EOM SERVICES	30.00
			MICROSOFT SPLIT	3.30
			TOTAL:	1,623.25
POLICE DEPARTMENT	PUBLIC SAFETY	ANDERSON CO SHERIFF'S DEPT.  GARNETT ROTARY KIESLER POLICE SUPPLY, INC LEXIPOL, LLC MILLER HARDWARE RICHMOND BODY WORKS LLC RYAN WALTER DBA VISA - CARD SERVICES  VERIZON  WEX BANK WITTMAN NAPA AUTO PARTS	INMATE HOUSING	105.00
			LIVE SCAN	150.00
			KURT KING ROTARY DUES	225.00
			LWRCI DIRECT IMPINGEMENT 5	742.74
			ANNL RENEWAL POLICY MAN/TR	4,603.08
			PD SPLIT	13.18
			2019 DODGE DURANGO	4,372.51
			EOM SERVICES	15.00
			VISA SPLIT	32.02
			VISA PD TRAINING	857.54
			VISA SPLIT	275.28
			VISA SPLIT	174.71
			MICROSOFT SPLIT	16.50
			CELL PHONE SPLIT	40.01
			CELL PHONE SPLIT	521.72
			POLICE FUEL WEX	736.02
			CITY SPLIT	36.69
			TOTAL:	12,917.00
SPECIAL HIGHWAY	SPECIAL HIGHWAY	JOHN FOLTZ PLBG. & ELECTRIC	4' PVC SCH 40 BE PIPE/HWY	239.10
			TOTAL:	239.10
TOURISM	TOURISM	ANDERSON CO CORN FEST., INC. GARNETT COMMUNITY FOUNDATION MASONFELT COMEDY LAKE GARNETT GRAND PRIX REVIVAL INC	TGT CORNSTOCK	7,295.00
			TGT EVENT REIMBUUSE	1,200.00
			2023 TGT ZOMBIE WALK	643.25
			TGT GRAND PRIX REVIVAL	6,100.00
			TOTAL:	15,238.25
ELECTRIC PRODUCTION	ELECTRIC	AT & T BRIGHTSPEED COMMUNICATIONS HAMPEL OIL DISTRIBUTORS, INC. ASSOCIATED EQUIPMENT SALES COMPANY LLC  MILLER HARDWARE	ACCESS BILLING	278.59
			POWER PLANT #313398188	47.39
			FUEL SPLIT	35.37
			CENTRIFUGAL DISC/SHIPPING	36.46
			BLOWER WHEEL ASSEMBLY	196.12
			ELEC PROD SPLIT	27.36
			ELEC PROD SPLIT	65.98

DEPARTMENT	FUND	VENDOR NAME	DESCRIPTION	AMOUNT
			ELEC PROD SPLIT	51.96
		RYAN WALTER DBA	EOM SERVICES	15.00
		VISA - CARD SERVICES	VISA SPLIT	22.50
			VISA SPLIT	17.38
			VISA SPLIT	143.96
			VISA SPLIT	34.95
		WITTMAN NAPA AUTO PARTS	CITY SPLIT	69.32
			TOTAL:	1,042.34
ELECTRIC DISTRIBUTION	ELECTRIC	ANDERSON CO SOLID WASTE	TIRES	12.00
		ANIXTER, INC.	BREAKER INTERLOCK KIT	601.62
		BORDER STATES INDUSTRIES, INC	(2) LED 82W	819.15
		HAMPEL OIL DISTRIBUTORS, INC.	FUEL SPLIT	122.08
			ON ROAD SPLIT	257.66
		TYNDALE COMPANY	RAIN JACKET-TROY	190.00
		KANSAS ONE-CALL SYSTEM INC. DIST	LOCATES (54) SPLIT	16.20
		MILLER HARDWARE	ELEC DIST SPLIT	24.19
			ELEC DIST SPLIT	8.59
		RYAN WALTER DBA	EOM SERVICES	7.50
		VERMEER GREAT PLAINS	ARCH-CRUMBER	411.10
		VERIZON	CELL PHONE SPLIT	46.46
		WITTMAN NAPA AUTO PARTS	CITY SPLIT	5.99
			TOTAL:	2,522.54
GAS	GAS	DC & B SUPPLY INC	LOCKING KEY ASSEMBLY/MTR B	1,204.26
			GAS PIPE	2,028.50
			TRACER WIRE	250.00
		FIDELIS ENERGY GROUP, LLC	NOV 2023 SERVICES	1,650.00
		GARNETT HOME CENTER	GAS TOOL	13.41
		HAMPEL OIL DISTRIBUTORS, INC.	FUEL SPLIT	91.80
		JOHN FOLTZ PLBG. & ELECTRIC	BACKHOE RENTAL VET CLINIC	300.00
		KANSAS MUNICIPAL UTILITIES, INC	WORKSHOP DILLEY/HARRISON	250.00
		KANSAS ONE-CALL SYSTEM INC. DIST	LOCATES (54) SPLIT	16.20
		MILLER HARDWARE	GAS SPLIT	562.65
		NAVRAT'S	COPY PAPER (60 REAM)	6.79
		RYAN WALTER DBA	EOM SERVICES	7.50
		VERMEER GREAT PLAINS	ARCH-CRUMBER	411.09
		VISA - CARD SERVICES	VISA SPLIT	4.73
			VISA SPLIT	60.18
			ADOBE SPLIT	10.74
			MICROSOFT SPLIT	0.66
			TOTAL:	6,868.51
SANITATION	SANITATION	ANDERSON CO SOLID WASTE	TS TONNAGE	7,680.60
		ARMOR EQUIPMENT	3YD FOR SHERIFF OFFICE	1,384.00
		HAMPEL OIL DISTRIBUTORS, INC.	FUEL SPLIT	8.17
			ON ROAD SPLIT	712.81
		INLAND TRUCK PARTS COMPANY	22 FRTLINER OIL/FUEL FILTE	185.74
		MILLER HARDWARE	TRASH SPLIT	14.99
		RYAN WALTER DBA	EOM SERVICES	7.50
		VISA - CARD SERVICES	VISA SPLIT	4.73
			MICROSOFT SPLIT	0.66
			TOTAL:	9,999.20
WASTEWATER	WASTEWATER	BRIGHTSPEED COMMUNICATIONS	WASTEWATER #313894279	156.70
			WASTEWATER #313894279	83.52



DEPARTMENT	FUND	VENDOR NAME	DESCRIPTION	AMOUNT
		HANDYMAN CONSTRUCTION	REPAIR WATER LINE/WWTR PLA	175.00
		HAMPEL OIL DISTRIBUTORS, INC.	FUEL SPLIT	84.59
		MIDWEST ENGINEERING GROUP LLC	SEWER WWTR SYSTEM PER	10,500.00
		KANSAS ONE-CALL SYSTEM INC. DIST	LOCATES (54) SPLIT	16.20
		MILLER HARDWARE	WASTEWATER SPLIT	41.80
			WASTEWATER SPLIT	29.97
			WASTEWATER SPLIT	74.97
		OLATHE WINWATER WORKS CO.	GASKET PIPE	97.86
			FITTINGS	30.00
		VISA - CARD SERVICES	MICROSOFT SPLIT	0.66
		VERIZON	CELL PHONE SPLIT	41.76
			TOTAL:	11,333.03
WATER	WATER	ACCURATE ENVIRONMENTAL LLC	TESTING SUPPLIES	438.50
		HAMPEL OIL DISTRIBUTORS, INC.	FUEL SPLIT	91.80
			FUEL SPLIT	32.87
		HAWKINS, INC.	CHEMICAL	14,019.49
			CHEMICAL	4,191.24
		KANSAS MUNICIPAL UTILITIES, INC	WORKSHOP DILLEY/HARRISON	250.00
		KANSAS ONE-CALL SYSTEM INC. DIST	LOCATES (54) SPLIT	16.20
		MCCLURE ENGINEERING	RESER SPILLWAY REPAIR MITI	20,700.93
			WATER TREATMENT PLANT PER	14,437.50
		MILLER HARDWARE	WATER SPLIT	116.86
			WATER SPLIT	416.66
		NAVRAT'S	COPY PAPER (60 REAM)	6.79
		OLATHE WINWATER WORKS CO.	(13) BALL CURB/(3) ANGLE B	2,731.00
			(13) BALL CURB/(3) ANGLE B	411.00
			(7) MACRO 2-BOLT	2,864.00
			(12) BRASS SCRED HEX BUSH	216.00
		PACE ANALYTICAL SERVICES LLC	WATER TESTING	287.50
		RYAN WALTER DBA	EOM SERVICES	7.50
			EOM SERVICES	15.00
		SURVEYING AND MAPPING LLC	ANNUAL GIS WEBSITE MAINT	3,600.00
		VERMEER GREAT PLAINS	ARCH-CRUMBER	411.10
		VISA - CARD SERVICES	VISA SPLIT	4.73
			VISA SPLIT	282.93
			VISA SPLIT	34.25
			ADOBE SPLIT	10.75
			MICROSOFT SPLIT	0.66
		WHITAKER AGGREGATES, INC.	WATER LEAK W 11TH	75.26
		WITTMAN NAPA AUTO PARTS	CITY SPLIT	5.35
			TOTAL:	65,675.87
ECONOMIC DEVELOPMENT	ECONOMIC DEVELOPME	GARNETT PUBLISHING, INC.	ADVISORY BOARD AD	78.80
		TYNDALE COMPANY	S HARRISON -ECO DEV	85.00
		NAVRAT'S	COPY PAPER (60 REAM)	20.37
		RYAN WALTER DBA	EOM SERVICES	1.25
		VALIDITY SCREENING SOLUTIONS	EMPLOYEE BACKGROUND	92.00
		VISA - CARD SERVICES	VISA SPLIT	11.52
			ADOBE SPLIT	21.59
			MICROSOFT SPLIT	3.30
			TOTAL:	313.83
PARKSIDE #1	PARKSIDE #1	ALL-IN-ONE PEST, HOME & LAWN, LLC	PKSIDE 1	150.00
		BAUMAN INTERIORS, LLC	PKSIDE 1 CARPET	171.84
		BRIGHTSPEED COMMUNICATIONS	GHA SPLIT	93.55

DEPARTMENT	FUND	VENDOR NAME	DESCRIPTION	AMOUNT_
			GHA SPLIT	89.99
		GARNETT HOME CENTER	GHA SPLIT	784.07
		HD SUPPLY, INC	SINK BSKTPKSIDE 1	12.79
		MEI TOTAL ELEVATOR SOLUTIONS	NOV MONTHLY SERVICE	296.33
		STEVE'S FLOOR & MORE	CARPET PKSIDE 1	426.55
			PKSIDE 1 CARPET	426.55
		MILLER HARDWARE	GHA SPLIT	53.61
		REALPAGE	SCREENING	26.57
		STATE FIRE MARSHALL OFFICE	FIRE STORAGE WTR HEATER	80.00
		VISA - CARD SERVICES	VISA SPLIT	155.68
		WITTMAN NAPA AUTO PARTS	GHA SPLIT	43.37
		WOLKEN PLBG. & ELECTRIC, INC.	PKSIDE 1 WATER LEAK REPAIR	267.76
			TOTAL:	3,078.66
PARKSIDE #2	PARKSIDE #2	BAUMAN INTERIORS, LLC	PKSIDE 2 CARPET	1,023.45
		BRIGHTSPEED COMMUNICATIONS	GHA SPLIT	93.55
			GHA SPLIT	89.99
		C.E.S.	PKSID 2 BLDG MAINT	15,738.75
			PKSIDE 2 BLDG MAINT	324.74
			PKSIDE 2 BLDG MAINT	937.50
		GARNETT HOME CENTER	GHA SPLIT	768.81
		MEI TOTAL ELEVATOR SOLUTIONS	NOV MONTHLY SERVICE	296.32
		KELLY ELECTRIC	CHANGE MAIN 1000AMP PANEL	4,680.00
		MILLER HARDWARE	GHA SPLIT	11.63
		VISA - CARD SERVICES	VISA SPLIT	155.68
		WITTMAN NAPA AUTO PARTS	GHA SPLIT	43.37
			TOTAL:	24,163.79
PARK PLAZA NORTH	PARK PLAZA NORTH	BRIGHTSPEED COMMUNICATIONS	GHA SPLIT	93.55
			GHA SPLIT	89.99
		GARNETT HOME CENTER	GHA SPLIT	70.44
		MILLER HARDWARE	GHA SPLIT	11.63
		VISA - CARD SERVICES	VISA SPLIT	46.53
		WITTMAN NAPA AUTO PARTS	GHA SPLIT	43.36
			TOTAL:	355.50
EQUIPMENT RESERVES	EQUIPMENT RESERVE	ARMOR EQUIPMENT	3YD REAR LOAD - REFUSE	3,397.00
			TOTAL:	3,397.00

DEPARTMENT	FUND	VENDOR NAME	DESCRIPTION	AMOUNT_
===== FUND TOTALS =====				
	101	GENERAL		29,449.57
	102	AIRPORT		2,902.59
	104	LIBRARY		329.45
	105	PUBLIC SAFETY		14,540.25
	106	SPECIAL HIGHWAY		239.10
	107	TOURISM		15,238.25
	109	ELECTRIC		3,564.88
	110	GAS		6,868.51
	111	SANITATION		9,999.20
	112	WASTEWATER		11,333.03
	113	WATER		65,675.87
	114	ECONOMIC DEVELOPMENT		313.83
	115	PARKSIDE #1		3,078.66
	116	PARKSIDE #2		24,163.79
	117	PARK PLAZA NORTH		355.50
	119	EQUIPMENT RESERVE		3,397.00
-----				
		GRAND TOTAL:		191,449.48
-----				

TOTAL PAGES: 7

VENDOR SORT KEY	DESCRIPTION	FUND	DEPARTMENT	AMOUNT_
ACCURATE ENVIRONMENTAL LLC	TESTING SUPPLIES	WATER	WATER	438.50_
			TOTAL:	438.50_
ALL-IN-ONE PEST, HOME & LAWN, LLC	PKSIDE 1	PARKSIDE #1	PARKSIDE #1	150.00_
			TOTAL:	150.00_
ANDERSON CO CORN FEST., INC.	TGT CORNSTOCK	TOURISM	TOURISM	7,295.00_
			TOTAL:	7,295.00_
ANDERSON CO SHERIFF'S DEPT.	INMATE HOUSING	PUBLIC SAFETY	POLICE DEPARTMENT	105.00
	LIVE SCAN	PUBLIC SAFETY	POLICE DEPARTMENT	150.00_
			TOTAL:	255.00_
ANDERSON CO SOLID WASTE	C&D TONNAGE	GENERAL	STREET & STORMWATER	268.11
	TIRES	ELECTRIC	ELECTRIC DISTRIBUTION	12.00
	TS TONNAGE	SANITATION	SANITATION	7,680.60_
			TOTAL:	7,960.71_
ANIXTER, INC.	BREAKER INTERLOCK KIT	ELECTRIC	ELECTRIC DISTRIBUTION	601.62_
			TOTAL:	601.62_
ARMOR EQUIPMENT	3YD FOR SHERIFF OFFICE	SANITATION	SANITATION	1,384.00
	3YD REAR LOAD - REFUSE	EQUIPMENT RESERVE	EQUIPMENT RESERVES	3,397.00_
			TOTAL:	4,781.00_
ASSOCIATED EQUIPMENT SALES COMPANY LLC	CENTRIFUGAL DISC/SHIPPING	ELECTRIC	ELECTRIC PRODUCTION	36.46
	BLOWER WHEEL ASSEMBLY	ELECTRIC	ELECTRIC PRODUCTION	196.12_
			TOTAL:	232.58_
AT & T	ACCESS BILLING	ELECTRIC	ELECTRIC PRODUCTION	278.59_
			TOTAL:	278.59_
BAUMAN BROTHERS FARMS LLC	FLASHER	GENERAL	STREET & STORMWATER	19.70
	KEY PL B102/WIRE	GENERAL	STREET & STORMWATER	485.64_
			TOTAL:	505.34_
BAUMAN INTERIORS, LLC	PKSIDE 1 CARPET	PARKSIDE #1	PARKSIDE #1	171.84
	PKSIDE 2 CARPET	PARKSIDE #2	PARKSIDE #2	1,023.45_
			TOTAL:	1,195.29_
BORDER STATES INDUSTRIES, INC	(2) LED 82W	ELECTRIC	ELECTRIC DISTRIBUTION	819.15_
			TOTAL:	819.15_
BRIGHTSPEED COMMUNICATIONS	CITY HALL #313191149	GENERAL	GOVERNMENT ADMINISTRAT	115.32
	POWER PLANT #313398188	ELECTRIC	ELECTRIC PRODUCTION	47.39
	WASTEWATER #313894279	WASTEWATER	WASTEWATER	156.70
	WASTEWATER #313894279	WASTEWATER	WASTEWATER	83.52
	GHA SPLIT	PARKSIDE #1	PARKSIDE #1	93.55
	GHA SPLIT	PARKSIDE #1	PARKSIDE #1	89.99
	GHA SPLIT	PARKSIDE #2	PARKSIDE #2	93.55
	GHA SPLIT	PARKSIDE #2	PARKSIDE #2	89.99
	GHA SPLIT	PARK PLAZA NORTH	PARK PLAZA NORTH	93.55
	GHA SPLIT	PARK PLAZA NORTH	PARK PLAZA NORTH	89.99_
			TOTAL:	953.55_
C.E.S.	PKSID 2 BLDG MAINT	PARKSIDE #2	PARKSIDE #2	15,738.75

VENDOR SORT KEY	DESCRIPTION	FUND	DEPARTMENT	AMOUNT
	PKSIDE 2 BLDG MAINT	PARKSIDE #2	PARKSIDE #2	324.74
	PKSIDE 2 BLDG MAINT	PARKSIDE #2	PARKSIDE #2	937.50
			TOTAL:	17,000.99
COUNTRYSIDE VET CLINIC, INC.	CAT BOARD/EUTHANASIA/DISPO	GENERAL	COMMUNITY DEVELOPMENT	71.00
	CAT BOARD/EUTHANASIA/DISPO	GENERAL	COMMUNITY DEVELOPMENT	131.00
	CAT BOARD/EUTHANASIA/DISPO	GENERAL	COMMUNITY DEVELOPMENT	131.00
			TOTAL:	333.00
D & S SANITATION LLC	CAMPGRD/SOCCER/BOY SCOUT T	GENERAL	PARKS, RECREATION & CE	255.00
	CAMPBGROUND/SOCCER TOILET	GENERAL	PARKS, RECREATION & CE	170.00
			TOTAL:	425.00
DC & B SUPPLY INC	LOCKING KEY ASSEMBLY/MTR B	GAS	GAS	1,204.26
	GAS PIPE	GAS	GAS	2,028.50
	TRACER WIRE	GAS	GAS	250.00
			TOTAL:	3,482.76
DIGITAL CONNECTIONS, INC.	CITY HALL/COM DEV COPIES	GENERAL	GOVERNMENT ADMINISTRAT	824.30
	CITY HALL/COM DEV COPIES	GENERAL	COMMUNITY DEVELOPMENT	824.30
	LIBRARY COPIES	LIBRARY	LIBRARY	78.96
			TOTAL:	1,727.56
DON'S AUTOMOTIVE	F-550 (PARKS)	GENERAL	PARKS, RECREATION & CE	320.00
			TOTAL:	320.00
EVERGY	COM DEV #7745674439	GENERAL	COMMUNITY DEVELOPMENT	26.00
	CAMPSITES #5102657023	GENERAL	PARKS, RECREATION & CE	45.72
	CAMPSITE #0638664876	GENERAL	PARKS, RECREATION & CE	25.95
	CAMPSITE #9127811310	GENERAL	PARKS, RECREATION & CE	59.23
			TOTAL:	156.90
FIDELIS ENERGY GROUP, LLC	NOV 2023 SERVICES	GAS	GAS	1,650.00
			TOTAL:	1,650.00
GARNETT COMMUNITY FOUNDATION	TGT EVENT REIMBUUSE	TOURISM	TOURISM	1,200.00
			TOTAL:	1,200.00
GARNETT HOME CENTER	TORPEDO LEVEL	GENERAL	STREET & STORMWATER	7.49
	HOSE BARS	GENERAL	STREET & STORMWATER	3.79
	GAS TOOL	GAS	GAS	13.41
	GHA SPLIT	PARKSIDE #1	PARKSIDE #1	784.07
	GHA SPLIT	PARKSIDE #2	PARKSIDE #2	768.81
	GHA SPLIT	PARK PLAZA NORTH	PARK PLAZA NORTH	70.44
			TOTAL:	1,648.01
GARNETT POST OFFICE	NOV UTILITY BILLING	GENERAL	GOVERNMENT ADMINISTRAT	700.00
			TOTAL:	700.00
GARNETT PUBLISHING, INC.	TREASURER REPORT	GENERAL	GOVERNMENT ADMINISTRAT	158.50
	ADVISORY BOARD AD	ECONOMIC DEVELOPME	ECONOMIC DEVELOPMENT	78.80
			TOTAL:	237.30
GARNETT ROTARY	KURT KING ROTARY DUES	PUBLIC SAFETY	POLICE DEPARTMENT	225.00
			TOTAL:	225.00

VENDOR SORT KEY	DESCRIPTION	FUND	DEPARTMENT	AMOUNT_
GERKEN RENT-ALL, INC	NORTH LAKE TOILETS (5)	GENERAL	PARKS, RECREATION & CE	357.50
	RESERVOIR (6) TOILETS	GENERAL	PARKS, RECREATION & CE	627.00
			TOTAL:	984.50
HAMPEL OIL DISTRIBUTORS, INC.	FUEL SPLIT	GENERAL	GOVERNMENT ADMINISTRAT	29.80
	FUEL SPLIT	GENERAL	COMMUNITY DEVELOPMENT	38.45
	FUEL SPLIT	GENERAL	STREET & STORMWATER	190.80
	ON ROAD SPLIT	GENERAL	STREET & STORMWATER	53.78
	FUEL SPLIT	ELECTRIC	ELECTRIC PRODUCTION	35.37
	FUEL SPLIT	ELECTRIC	ELECTRIC DISTRIBUTION	122.08
	ON ROAD SPLIT	ELECTRIC	ELECTRIC DISTRIBUTION	257.66
	FUEL SPLIT	GAS	GAS	91.80
	FUEL SPLIT	SANITATION	SANITATION	8.17
	ON ROAD SPLIT	SANITATION	SANITATION	712.81
	FUEL SPLIT	WASTEWATER	WASTEWATER	84.59
	FUEL SPLIT	WATER	WATER	91.80
	FUEL SPLIT	WATER	WATER	32.87
			TOTAL:	1,749.98
HANDYMAN CONSTRUCTION	REPAIR WATER LINE/WWTR PLA	WASTEWATER	WASTEWATER	175.00
			TOTAL:	175.00
HAWKINS, INC.	CHEMICAL	WATER	WATER	14,019.49
	CHEMICAL	WATER	WATER	4,191.24
			TOTAL:	18,210.73
HAYS FIRE AND RESCUE SALES & SERVICE L	PUMP TESTS (3)	PUBLIC SAFETY	FIRE DEPARTMENT	1,425.00
			TOTAL:	1,425.00
HD SUPPLY, INC	SINK BSKTPKSIDE 1	PARKSIDE #1	PARKSIDE #1	12.79
			TOTAL:	12.79
HEDDING, LINDA	REIMB CAMPING FEE-CORNSTOC	GENERAL	PARKS, RECREATION & CE	50.00
			TOTAL:	50.00
INLAND TRUCK PARTS COMPANY	22 FRTLINER OIL/FUEL FILTE	SANITATION	SANITATION	185.74
			TOTAL:	185.74
JOHN FOLTZ PLBG. & ELECTRIC	4' PVC SCH 40 BE PIPE/HWY	SPECIAL HIGHWAY	SPECIAL HIGHWAY	239.10
	BACKHOE RENTAL VET CLINIC	GAS	GAS	300.00
			TOTAL:	539.10
KANSAS MUNICIPAL UTILITIES, INC	WORKSHOP DILLEY/HARRISON	GAS	GAS	250.00
	WORKSHOP DILLEY/HARRISON	WATER	WATER	250.00
			TOTAL:	500.00
KANSAS ONE-CALL SYSTEM INC. DIST	LOCATES (54) SPLIT	ELECTRIC	ELECTRIC DISTRIBUTION	16.20
	LOCATES (54) SPLIT	GAS	GAS	16.20
	LOCATES (54) SPLIT	WASTEWATER	WASTEWATER	16.20
	LOCATES (54) SPLIT	WATER	WATER	16.20
			TOTAL:	64.80
KANSAS STATE TREASURER	KANSAS STATE TREASURER	GENERAL	GOVERNMENT ADMINISTRAT	1,717.50
			TOTAL:	1,717.50
KELLY ELECTRIC	CHANGE MAIN 1000AMP PANEL	PARKSIDE #2	PARKSIDE #2	4,680.00

VENDOR SORT KEY	DESCRIPTION	FUND	DEPARTMENT	AMOUNT_
			TOTAL:	4,680.00
KEY EQUIPMENT & SUPPLY COMPANY	BELT TENSIONER/AP42-BELT	GENERAL	STREET & STORMWATER	433.17
			TOTAL:	433.17
KIESLER POLICE SUPPLY, INC	LWRCI DIRECT IMPINGEMENT 5	PUBLIC SAFETY	POLICE DEPARTMENT	742.74
			TOTAL:	742.74
KING, BECKY	THC REIMB HALF OF TIME PD	GENERAL	REVENUES	15.00
			TOTAL:	15.00
KLEHAMMER, BRENDA JE'NELLE	OCT YOGA 17@15.00	GENERAL	PARKS, RECREATION & CE	255.00
			TOTAL:	255.00
LAKE GARNETT GRAND PRIX REVIVAL INC	TGT GRAND PRIX REVIVAL	TOURISM	TOURISM	6,100.00
			TOTAL:	6,100.00
LEXIPOL, LLC	ANNL RENEWAL POLICY MAN/TR	PUBLIC SAFETY	POLICE DEPARTMENT	4,603.08
			TOTAL:	4,603.08
LUTZ, CHARLOTTE	REIMB MILEAGE PARSONS	LIBRARY	LIBRARY	98.25
			TOTAL:	98.25
MASONFELT COMEDY	2023 TGT ZOMBIE WALK	TOURISM	TOURISM	643.25
			TOTAL:	643.25
MCCLURE ENGINEERING	RESER SPILLWAY REPAIR MITI	WATER	WATER	20,700.93
	WATER TREATMENT PLANT PER	WATER	WATER	14,437.50
			TOTAL:	35,138.43
MCSPADDEN, ANGELA	NOV ZUMBA CLASSES	GENERAL	PARKS, RECREATION & CE	60.00
			TOTAL:	60.00
MEI TOTAL ELEVATOR SOLUTIONS	NOV MONTHLY SERVICE	PARKSIDE #1	PARKSIDE #1	296.33
	NOV MONTHLY SERVICE	PARKSIDE #2	PARKSIDE #2	296.32
			TOTAL:	592.65
MIDWEST ENGINEERING GROUP LLC	SEWER WWTR SYSTEM PER	WASTEWATER	WASTEWATER	10,500.00
			TOTAL:	10,500.00
MILLER HARDWARE	PARK SPLIT	GENERAL	PARKS, RECREATION & CE	20.77
	PARK SPLIT	GENERAL	PARKS, RECREATION & CE	60.35
	PARK SPLIT	GENERAL	PARKS, RECREATION & CE	99.80
	PARK SPLIT	GENERAL	PARKS, RECREATION & CE	170.34
	PARK SPLIT	GENERAL	PARKS, RECREATION & CE	7.99
	STREET SPLIT	GENERAL	STREET & STORMWATER	461.17
	STREET SPLIT	GENERAL	STREET & STORMWATER	38.48
	STREET SPLIT	GENERAL	STREET & STORMWATER	93.50
	STREET SPLIT	GENERAL	STREET & STORMWATER	59.75
	PD SPLIT	PUBLIC SAFETY	POLICE DEPARTMENT	13.18
	ELEC PROD SPLIT	ELECTRIC	ELECTRIC PRODUCTION	27.36
	ELEC PROD SPLIT	ELECTRIC	ELECTRIC PRODUCTION	65.98
	ELEC PROD SPLIT	ELECTRIC	ELECTRIC PRODUCTION	51.96
	ELEC DIST SPLIT	ELECTRIC	ELECTRIC DISTRIBUTION	24.19
	ELEC DIST SPLIT	ELECTRIC	ELECTRIC DISTRIBUTION	8.59
	GAS SPLIT	GAS	GAS	562.65

VENDOR SORT KEY	DESCRIPTION	FUND	DEPARTMENT	AMOUNT_
	TRASH SPLIT	SANITATION	SANITATION	14.99
	WASTEWATER SPLIT	WASTEWATER	WASTEWATER	41.80
	WASTEWATER SPLIT	WASTEWATER	WASTEWATER	29.97
	WASTEWATER SPLIT	WASTEWATER	WASTEWATER	74.97
	WATER SPLIT	WATER	WATER	116.86
	WATER SPLIT	WATER	WATER	416.66
	GHA SPLIT	PARKSIDE #1	PARKSIDE #1	53.61
	GHA SPLIT	PARKSIDE #2	PARKSIDE #2	11.63
	GHA SPLIT	PARK PLAZA NORTH	PARK PLAZA NORTH	11.63
			TOTAL:	2,538.18
NAV RAT'S	WINDOW ENVELOPES (1 CASE)	GENERAL	GOVERNMENT ADMINISTRAT	782.35
	COPY PAPER (60 REAM)	GENERAL	GOVERNMENT ADMINISTRAT	165.87
	60# WHITE OFFSET	GENERAL	GOVERNMENT ADMINISTRAT	124.00
	COPY PAPER (60 REAM)	GENERAL	COMMUNITY DEVELOPMENT	64.02
	COPY PAPER (60 REAM)	GENERAL	PARKS, RECREATION & CE	20.37
	COPY PAPER (60 REAM)	GENERAL	STREET & STORMWATER	6.79
	COPY PAPER (60 REAM)	GAS	GAS	6.79
	COPY PAPER (60 REAM)	WATER	WATER	6.79
	COPY PAPER (60 REAM)	ECONOMIC DEVELOPME	ECONOMIC DEVELOPMENT	20.37
			TOTAL:	1,197.35
NFPA	921 GUIDE FIRE/EXPLOSIVE H	PUBLIC SAFETY	FIRE DEPARTMENT	164.95
			TOTAL:	164.95
STATE FIRE MARSHALL OFFICE	FIRE STORAGE WTR HEATER	PARKSIDE #1	PARKSIDE #1	80.00
			TOTAL:	80.00
OLATHE WINWATER WORKS CO.	GASKET PIPE	WASTEWATER	WASTEWATER	97.86
	FITTINGS	WASTEWATER	WASTEWATER	30.00
	(13) BALL CURB/(3) ANGLE B	WATER	WATER	2,731.00
	(13) BALL CURB/(3) ANGLE B	WATER	WATER	411.00
	(7) MACRO 2-BOLT	WATER	WATER	2,864.00
	(12) BRASS SCRED HEX BUSH	WATER	WATER	216.00
			TOTAL:	6,349.86
PACE ANALYTICAL SERVICES LLC	WATER TESTING	WATER	WATER	287.50
			TOTAL:	287.50
PROPIO LS, LLC	TELEPHONE INTERPRETATION	GENERAL	GOVERNMENT ADMINISTRAT	6.50
			TOTAL:	6.50
RAINBOW FIREWORKS, INC.	RAINBOW FIREWORKS, INC.	GENERAL	COMMUNITY DEVELOPMENT	3,500.00
			TOTAL:	3,500.00
JESSE T RANDALL, ATTY	10.12.23 COURT SPEC PROSEC	GENERAL	GOVERNMENT ADMINISTRAT	343.75
			TOTAL:	343.75
REALPAGE	SCREENING	PARKSIDE #1	PARKSIDE #1	26.57
			TOTAL:	26.57
RICHMOND BODY WORKS LLC	2019 DODGE DURANGO	PUBLIC SAFETY	POLICE DEPARTMENT	4,372.51
			TOTAL:	4,372.51
RYAN WALTER DBA	EOM SERVICES	GENERAL	GOVERNMENT ADMINISTRAT	8.75
	EOM SERVICES	GENERAL	COMMUNITY DEVELOPMENT	5.00



VENDOR SORT KEY	DESCRIPTION	FUND	DEPARTMENT	AMOUNT_
	EOM SERVICES	GENERAL	COMMUNITY DEVELOPMENT	15.00
	EOM SERVICES	GENERAL	PARKS, RECREATION & CE	30.00
	EOM SERVICES	GENERAL	PARKS, RECREATION & CE	30.00
	EOM SERVICES	GENERAL	PARKS, RECREATION & CE	30.00
	EOM SERVICES	GENERAL	STREET & STORMWATER	15.00
	EOM SERVICES	LIBRARY	LIBRARY	30.00
	EOM SERVICES	PUBLIC SAFETY	FIRE DEPARTMENT	30.00
	EOM SERVICES	PUBLIC SAFETY	POLICE DEPARTMENT	15.00
	EOM SERVICES	ELECTRIC	ELECTRIC PRODUCTION	15.00
	EOM SERVICES	ELECTRIC	ELECTRIC DISTRIBUTION	7.50
	EOM SERVICES	GAS	GAS	7.50
	EOM SERVICES	SANITATION	SANITATION	7.50
	EOM SERVICES	WATER	WATER	7.50
	EOM SERVICES	WATER	WATER	15.00
	EOM SERVICES	ECONOMIC DEVELOPME	ECONOMIC DEVELOPMENT	1.25
			TOTAL:	270.00
SAM'S CLUB	FEES	GENERAL	PARKS, RECREATION & CE	39.99
			TOTAL:	39.99
SCHETTLER, PAT	NOV WAGES	AIRPORT	MUNICIPAL AIRPORT	2,507.96
			TOTAL:	2,507.96
SEELEY, DEBRA	REIMB CAMPING FEE-CORNSTOC	GENERAL	PARKS, RECREATION & CE	100.00
			TOTAL:	100.00
SNAP-ON CREDIT LLC	OCT MONTHLY	GENERAL	STREET & STORMWATER	46.75
			TOTAL:	46.75
STANION WHOLESALE ELECT. CO.	COMMISSION RM MONITOR/CABL	GENERAL	GOVERNMENT ADMINISTRAT	74.63
			TOTAL:	74.63
STEVE'S FLOOR & MORE	CARPET PKSIDE 1	PARKSIDE #1	PARKSIDE #1	426.55
	PKSIDE 1 CARPET	PARKSIDE #1	PARKSIDE #1	426.55
			TOTAL:	853.10
SURVEYING AND MAPPING LLC	ANNUAL GIS WEBSITE MAINT	WATER	WATER	3,600.00
			TOTAL:	3,600.00
TRI-STATE PUBLIC SAFETY	AMBER LIGHT/GASKET KIT	GENERAL	GOVERNMENT ADMINISTRAT	248.95
			TOTAL:	248.95
TYLER TECHNOLOGIES, INC.	LICENSE/SEB LICENSE	GENERAL	GOVERNMENT ADMINISTRAT	5,272.66
	HARDWARE SUPPORT	GENERAL	GOVERNMENT ADMINISTRAT	1,443.59
			TOTAL:	6,716.25
TYNDALE COMPANY	B DAVIS - PARK DIRECTOR	GENERAL	PARKS, RECREATION & CE	85.00
	RAIN JACKET-TROY	ELECTRIC	ELECTRIC DISTRIBUTION	190.00
	S HARRISON -ECO DEV	ECONOMIC DEVELOPME	ECONOMIC DEVELOPMENT	85.00
			TOTAL:	360.00
VALIDITY SCREENING SOLUTIONS	EMPLOYEE BACKGROUND	GENERAL	PARKS, RECREATION & CE	95.70
	EMPLOYEE BACKGROUND	ECONOMIC DEVELOPME	ECONOMIC DEVELOPMENT	92.00
			TOTAL:	187.70
VERIZON	CELL PHONE SPLIT	GENERAL	GOVERNMENT ADMINISTRAT	68.76

VENDOR SORT KEY	DESCRIPTION	FUND	DEPARTMENT	AMOUNT_
	CELL PHONE SPLIT	GENERAL	COMMUNITY DEVELOPMENT	87.62
	CELL PHONE SPLIT	AIRPORT	MUNICIPAL AIRPORT	41.46
	CELL PHONE SPLIT	PUBLIC SAFETY	POLICE DEPARTMENT	40.01
	CELL PHONE SPLIT	PUBLIC SAFETY	POLICE DEPARTMENT	521.72
	CELL PHONE SPLIT	ELECTRIC	ELECTRIC DISTRIBUTION	46.46
	CELL PHONE SPLIT	WASTEWATER	WASTEWATER	41.76
			TOTAL:	847.79
VERMEER GREAT PLAINS	ARCH-CRUMBER	ELECTRIC	ELECTRIC DISTRIBUTION	411.10
	ARCH-CRUMBER	GAS	GAS	411.09
	ARCH-CRUMBER	WATER	WATER	411.10
			TOTAL:	1,233.29
VISA - CARD SERVICES	VISA - GOOGLE SUITE	GENERAL	GOVERNMENT ADMINISTRAT	575.30
	1095-C FORM/MAIL	GENERAL	GOVERNMENT ADMINISTRAT	17.45
	VISA- SPLIT	GENERAL	GOVERNMENT ADMINISTRAT	36.13
	VISA-SPLIT	GENERAL	GOVERNMENT ADMINISTRAT	57.71
	ADOBE SPLIT	GENERAL	GOVERNMENT ADMINISTRAT	21.49
	MICROSOFT SPLIT	GENERAL	GOVERNMENT ADMINISTRAT	26.40
	VISA-SPLIT	GENERAL	COMMUNITY DEVELOPMENT	442.00
	VISA-TOWN TALK POSTAGE	GENERAL	COMMUNITY DEVELOPMENT	456.39
	GRANT WEBINAR	GENERAL	COMMUNITY DEVELOPMENT	495.00
	GODADDY	GENERAL	COMMUNITY DEVELOPMENT	3,559.87
	VISA-SPLIT	GENERAL	COMMUNITY DEVELOPMENT	119.97
	VISA - CARD SPLIT	GENERAL	COMMUNITY DEVELOPMENT	21.49
	MICROSOFT SPLIT	GENERAL	COMMUNITY DEVELOPMENT	9.90
	VISA SPLIT	GENERAL	PARKS, RECREATION & CE	13.19
	VISA SPLIT	GENERAL	PARKS, RECREATION & CE	82.38
	VISA SPLIT	GENERAL	PARKS, RECREATION & CE	61.31
	VISA SPLIT	GENERAL	PARKS, RECREATION & CE	150.85
	VISA SPLIT	GENERAL	PARKS, RECREATION & CE	9.89
	VISA SPLIT	GENERAL	PARKS, RECREATION & CE	215.15
	MICROSOFT SPLIT	GENERAL	PARKS, RECREATION & CE	3.30
	VISA SPLIT	GENERAL	STREET & STORMWATER	24.59
	VISA SPLIT	GENERAL	STREET & STORMWATER	4.73
	VISA SPLIT	GENERAL	STREET & STORMWATER	30.22
	VISA SPLIT	GENERAL	STREET & STORMWATER	81.00
	VISA SPLIT	GENERAL	STREET & STORMWATER	67.19
	MICROSOFT SPLIT	GENERAL	STREET & STORMWATER	0.66
	VISA SPLIT	AIRPORT	MUNICIPAL AIRPORT	12.25
	VISA SPLIT	AIRPORT	MUNICIPAL AIRPORT	87.47
	VISA SPLIT	AIRPORT	MUNICIPAL AIRPORT	253.45
	VISA SPLIT	LIBRARY	LIBRARY	24.95
	VISA SPLIT	LIBRARY	LIBRARY	80.51
	VISA SPLIT	LIBRARY	LIBRARY	16.78
	MICROSOFT SPLIT	PUBLIC SAFETY	FIRE DEPARTMENT	3.30
	VISA SPLIT	PUBLIC SAFETY	POLICE DEPARTMENT	32.02
	VISA PD TRAINING	PUBLIC SAFETY	POLICE DEPARTMENT	857.54
	VISA SPLIT	PUBLIC SAFETY	POLICE DEPARTMENT	275.28
	VISA SPLIT	PUBLIC SAFETY	POLICE DEPARTMENT	174.71
	MICROSOFT SPLIT	PUBLIC SAFETY	POLICE DEPARTMENT	16.50
	VISA SPLIT	ELECTRIC	ELECTRIC PRODUCTION	22.50
	VISA SPLIT	ELECTRIC	ELECTRIC PRODUCTION	17.38
	VISA SPLIT	ELECTRIC	ELECTRIC PRODUCTION	143.96
	VISA SPLIT	ELECTRIC	ELECTRIC PRODUCTION	34.95
	VISA SPLIT	GAS	GAS	4.73

VENDOR SORT KEY	DESCRIPTION	FUND	DEPARTMENT	AMOUNT_
	VISA SPLIT	GAS	GAS	60.18
	ADOBE SPLIT	GAS	GAS	10.74
	MICROSOFT SPLIT	GAS	GAS	0.66
	VISA SPLIT	SANITATION	SANITATION	4.73
	MICROSOFT SPLIT	SANITATION	SANITATION	0.66
	MICROSOFT SPLIT	WASTEWATER	WASTEWATER	0.66
	VISA SPLIT	WATER	WATER	4.73
	VISA SPLIT	WATER	WATER	282.93
	VISA SPLIT	WATER	WATER	34.25
	ADOBE SPLIT	WATER	WATER	10.75
	MICROSOFT SPLIT	WATER	WATER	0.66
	VISA SPLIT	ECONOMIC DEVELOPME	ECONOMIC DEVELOPMENT	11.52
	ADOBE SPLIT	ECONOMIC DEVELOPME	ECONOMIC DEVELOPMENT	21.59
	MICROSOFT SPLIT	ECONOMIC DEVELOPME	ECONOMIC DEVELOPMENT	3.30
	VISA SPLIT	PARKSIDE #1	PARKSIDE #1	155.68
	VISA SPLIT	PARKSIDE #2	PARKSIDE #2	155.68
	VISA SPLIT	PARK PLAZA NORTH	PARK PLAZA NORTH	46.53
			TOTAL:	9,447.09
WEX BANK	POLICE FUEL WEX	PUBLIC SAFETY	POLICE DEPARTMENT	736.02
			TOTAL:	736.02
WHITAKER AGGREGATES, INC.	WATER LEAK W 11TH	WATER	WATER	75.26
			TOTAL:	75.26
WHITE CAP SUPPLY HOLDINGS, LLC	24" DIAMETER FLAG POLE N L GENERAL		PARKS, RECREATION & CE	74.00
			TOTAL:	74.00
WITTMAN NAPA AUTO PARTS	CITY SPLIT	GENERAL	PARKS, RECREATION & CE	5.26
	CITY SPLIT	GENERAL	PARKS, RECREATION & CE	14.38
	CITY SPLIT	GENERAL	PARKS, RECREATION & CE	85.99
	CITY SPLIT	GENERAL	STREET & STORMWATER	3.76
	CITY SPLIT	GENERAL	STREET & STORMWATER	29.88
	CITY SPLIT	GENERAL	STREET & STORMWATER	43.65
	CITY SPLIT	PUBLIC SAFETY	POLICE DEPARTMENT	36.69
	CITY SPLIT	ELECTRIC	ELECTRIC PRODUCTION	69.32
	CITY SPLIT	ELECTRIC	ELECTRIC DISTRIBUTION	5.99
	CITY SPLIT	WATER	WATER	5.35
	GHA SPLIT	PARKSIDE #1	PARKSIDE #1	43.37
	GHA SPLIT	PARKSIDE #2	PARKSIDE #2	43.37
	GHA SPLIT	PARK PLAZA NORTH	PARK PLAZA NORTH	43.36
			TOTAL:	430.37
WKI EMPORIA KENWORTH	DIESEL WINTERIZATION	GENERAL	STREET & STORMWATER	275.84
			TOTAL:	275.84
WOLKEN PLBG. & ELECTRIC, INC.	PKSIDE 1 WATER LEAK REPAIR	PARKSIDE #1	PARKSIDE #1	267.76
			TOTAL:	267.76
ZIMMERMAN, KATHY	40 @5.00 X 70%	GENERAL	PARKS, RECREATION & CE	140.00
			TOTAL:	140.00

VENDOR SORT KEY	DESCRIPTION	FUND	DEPARTMENT	AMOUNT_
-----------------	-------------	------	------------	---------

===== FUND TOTALS =====				
101	GENERAL	29,449.57		
102	AIRPORT	2,902.59		
104	LIBRARY	329.45		
105	PUBLIC SAFETY	14,540.25		
106	SPECIAL HIGHWAY	239.10		
107	TOURISM	15,238.25		
109	ELECTRIC	3,564.88		
110	GAS	6,868.51		
111	SANITATION	9,999.20		
112	WASTEWATER	11,333.03		
113	WATER	65,675.87		
114	ECONOMIC DEVELOPMENT	313.83		
115	PARKSIDE #1	3,078.66		
116	PARKSIDE #2	24,163.79		
117	PARK PLAZA NORTH	355.50		
119	EQUIPMENT RESERVE	3,397.00		
-----				
	GRAND TOTAL:	191,449.48		
-----				

TOTAL PAGES: 9

BILLS:	\$191,449.48
PAYROLL 10/27:	\$112,105.71
PAYROLL 11/09:	\$118,068.41
TOTAL:	\$421,623.60