

Optional Items

- FORK (L x W x T)(mm)

110D-7E

75 x 200 x 1,200 / 75 x 200 x 1,500 / 75 x 200 x 1,650 /
75 x 200 x 1,800 / 75 x 200 x 2,100 / 85 x 200 x 2,440

130D-7E

85 x 200 x 1,200 / 85 x 200 x 1,500 / 85 x 200 x 1,650 /
85 x 200 x 1,800 / 85 x 200 x 2,100 / 90 x 200 x 2,440

140D-7E

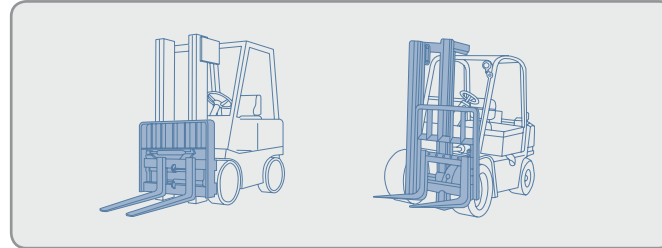
85 x 200 x 1,200 / 90 x 200 x 1,500 / 90 x 200 x 1,650 /
90 x 200 x 1,800 / 90 x 200 x 2,100 / 90 x 200 x 2,440

160D-7E

90 x 200 x 1,200 / 90 x 200 x 1,500 / 90 x 200 x 1,650 /
95 x 200 x 1,800 / 95 x 200 x 2,100 / 95 x 200 x 2,440

- MAST : SIMPLEX MAST / TRIPLEX MAST
- OVER SHOE : 1,800 / 2,000 / 2,200 / 2,400 / 2,600
- MCV : 4 - SPOOL / 5 - SPOOL
- SEAT : NON HEAT / HEAT
- BEACON LAMP : AMBER / RED / BLUE
- FORK POSITIONER : 82 / 100
- INTEGRAL SIDE SHIFT
- INTEGRAL SIDE SHIFT + FORK POSITIONER
- HYDRAULIC LINE : 3 - SPOOL / 4 - SPOOL / 5 - SPOOL
- SOLID TIRE
- PNEUMATIC TIRE : LUG / SMOOTH (14/16 ONLY)
- WIDE CARRIAGE (2,730 mm)
- HEAD GUARD
- REAR VIEW CAMERA & LOAD INDICATOR
- ESL (ENGINE START LIMIT)
- HANDS FREE

Various Attachments



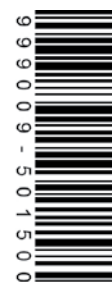
Some of the photos may include optional equipment.

HYUNDAI DIESEL FORKLIFT TRUCKS **Applied Tier 3 Engine**

110/130/140/160D-7E

HYUNDAI | FORKLIFT
HEAVY INDUSTRIES CO.,LTD.

14th Fl., Hyundai Bldg. 75, Yulgok-ro, Jongno-gu,
Seoul 110-796, Korea
TEL (82) (2) 746-4609, 4753
FAX (82) (2) 746-7444~7445



PLEASE CONTACT

www.hyundai-ce.com

2013. 09 Rev. 5

HYUNDAI
HEAVY INDUSTRIES CO.,LTD.

We build a better future

NEW criterion of Big Forklift Truck

Hyundai introduces a new line of 7E-series diesel forklift trucks. Excellent power and performance makes your business more profitable.



Excellent



Cruise Control



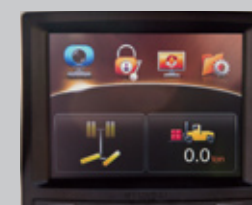
Instrument Switch Panel



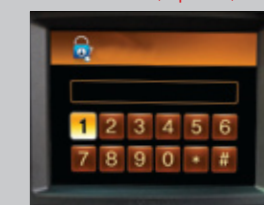
Rear View Camera
(Option)



Air Conditioner &
Heater (Option)



Load Indicator
(Option)



ESL(Engine Start Limit)
(Option)

Some of the photos may include optional equipment.

Ability of best, the new master on the job-site!

Smooth running, efficient and ergonomically designed, 110/130/140/160D-7E series are made to meet your needs.



Powerful Engine

Cummins QSB6.7 Engine

The six cylinders turbo-charged engine is built for power, reliability and economy. This engine meets EPA Tier 3 and EU stage IIIA emission regulation.



Engine Control Mode

According to operating load, the operator can select engine mode by changing side panel switch.

STD Mode : Fuel reduction mode for light-duty operating load

POWER Mode : Heavy-duty or operating at slope



Adjustable Engine Low Idle RPM

While engine runs, low idle rpm can be increased by unit of 25rpm and it keeps previously set rpm when engine restarts.

119kW/2,200rpm
74.6kgf-m/1,400rpm

Full-automatic Transmission

Full-automatic transmission gives easy, convenient handling and soft, smooth shifting. The operator can select two kinds of automatic modes. (1st→3rd, 2nd↔3rd)



Some of the photos may include optional equipment.



Cruise Control

It offers the ability to automatically maintain a desired engine speed with no accelerator pedal input and reduce fuel consumption.

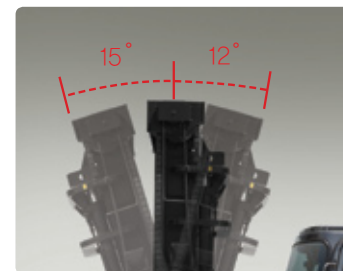


Transmission Control Switch



Excellent Night Work

- Variety position of work lamp provides the operator more comfortable and safe operating environments.
- Front : fender(2), mast(2) - Rear : cab(2)



Increased Mast Tilting Angle

Utilizing the mast tilting angle of 15 degrees forward and 12 degrees backward, the operator can perform loading and unloading jobs safely and rapidly.

Faster Travel Speed & Better Gradability

The powerful high-output engine provides greater acceleration, better gradability and faster travel speed on any tough terrains or slopes.



Gradability (Loaded)

| | |
|-----------------|-----------------|
| 110D-7E : 45.4% | 140D-7E : 37.0% |
| 130D-7E : 41.0% | 160D-7E : 31.4% |

Travel Speed (Unloaded)

| | |
|--------------------|--------------------|
| 110D-7E : 33.3km/h | 140D-7E : 32.2km/h |
| 130D-7E : 33.1km/h | 160D-7E : 32.2km/h |



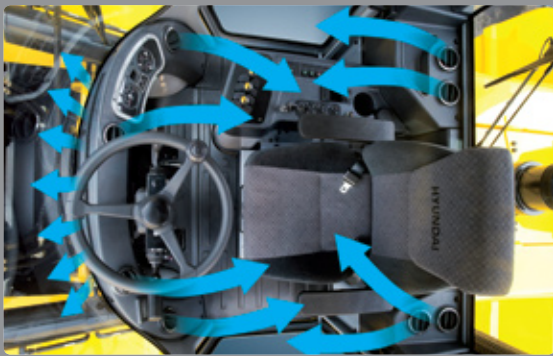
Ergonomic driving space design!

A design based on human engineering relieves fatigue and increases operator's efficiency.

Operator Friendly Gauges and Water-resistant Monitor Panel



Easily Adjustable Suspension Seat
An attractive and adjustable seat, based on a human engineering design, provides great comfort, safety and durability. (Head Rest - option)



High-output Air Conditioner & Heater (Option)
An air conditioner with integrated the condenser is mounted on upper side of the cabin to make a wide room in the cabin. And an air conditioner with high-output and heater always provide you comfortable environment when you work.



Some of the photos may include optional equipment.



Rear View Camera (Option)
The rear view camera makes the operation more easy and convenient. And it supports 4 camera channels.



Load Indicator (Option)
A load can be placed on the fork and can be accurately weighed by measuring the hydraulic pressure.



Centralized Instrument Switch Panel



USB MP3 Player & Remote Control



Hands Free Socket (Option)



Quick Response of Operating Control Levers
Only minimal operator's effort is required for precise, safe and productive control. (3-Lever : standard / 4・5-Lever : option)



Ergonomically Positioned Pedals
Based on human engineering ; the accelerator, brake and inching pedals are optimally positioned for the operator's convenience.



Adjustable Steering Column
Steering handle is adjustable depending on the operator's body shape. Adjustability of steering column makes you more comfortable.





Danger-free through high durability!

Safety and durability are priorities in design of the equipment.



Up-to-date Cooling System

The minimum fuel consumption and low noise are available by applying hydraulic cooling fan sensing intake air temperature, transmission oil temperature, coolant temperature and hydraulic temperature.



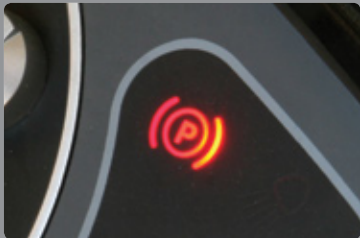
OPSS (Operator Presence Sensing System)

Control of mast tilting, lifting and lowering is not possible through operation of the appropriate control when the operators is not in the normal position.



Durable Drive Axle

The hypoid type planetary reduction drive axle smoothly delivers desired torque to the drive wheels.



Auto Parking

The parking brake is engaged automatically when the transmission is neutral and the operator leaves the seat.



Some of the photos may include optional equipment.



Wet Disc Brake System

The wet disc brake system is virtually maintenance free and is enclosed to protect from dust and water.



Fitted Protector for Hub Bolts

Durability has improved by applying protector for preventing bolts breakage. (Easy parts supply due to the wheel in common with front wheel)



Cylinder Guard

This guard helps to prevent possible damage from any foreign material.



Grease Fittings

Grease fittings are installed for fast access to steering axle center pin when doing your service checks.



Highly Durable Mast & Carriage Side Roller

Side roller with great durability for mast and carriage is included.



Highly Durable Carriage

The carriage is very strong cause of applying the high tensile structural steel which has a excellent durability. Work at the narrow space is easy because the width of carriage is narrower then overall width of the vehicle.



Large Footboard & Handle

Wide "open" step offers convenience and safety when entering and exiting the truck.



Centralized design for easy service!

An ideal arrangement of component parts ensures easy access and convenience for maintenance.



Large Engine Hood

Highly accessible engine compartment assures fast and efficient maintenance.



Easy Change Air Cleaner

This air filter is readily accessible for cleaning or replacement.



Cabin Air Fresh Filter

The internal pressure is maintained to be slightly higher than that of outside to exclude dust and to reduce noise levels.



Cabin Tilting Automatic System

Cabin tilting automatic system makes servicing of all power train components quick and easy. An electrically assisted hydraulic actuated cylinder tilts operator cabin to left side about 65 degrees for easy access to inside of truck components.



■ Some of the photos may include optional equipment.



Compact fuse Box for Easy Inspection



Mechanic Friendly Fuel Filter Replacement

Highly accessible engine compartment allows for quick replacement of filters.



Electrically Monitored Air Filter

Air cleaner sensor alerts the operator of a clogged air filter and allows replacement before damage.



Automatic Self Locking Gas Spring

Engine compartment hood is safely opened by a self locking gas spring.



Master Switch

A master switch disconnects the battery power to protect the electrical system from excess electrical drainage.



Large Tool Box



Pressure Gauge Port



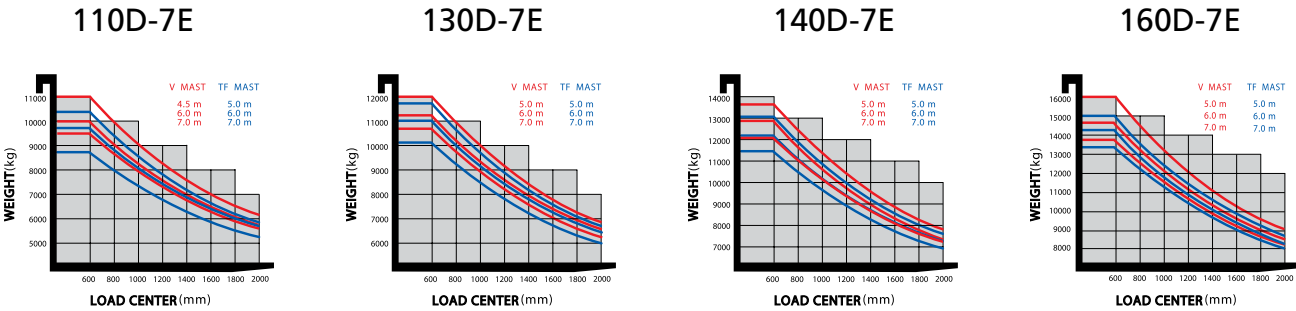
Easy Maintenance Oil Check

Mast Specification

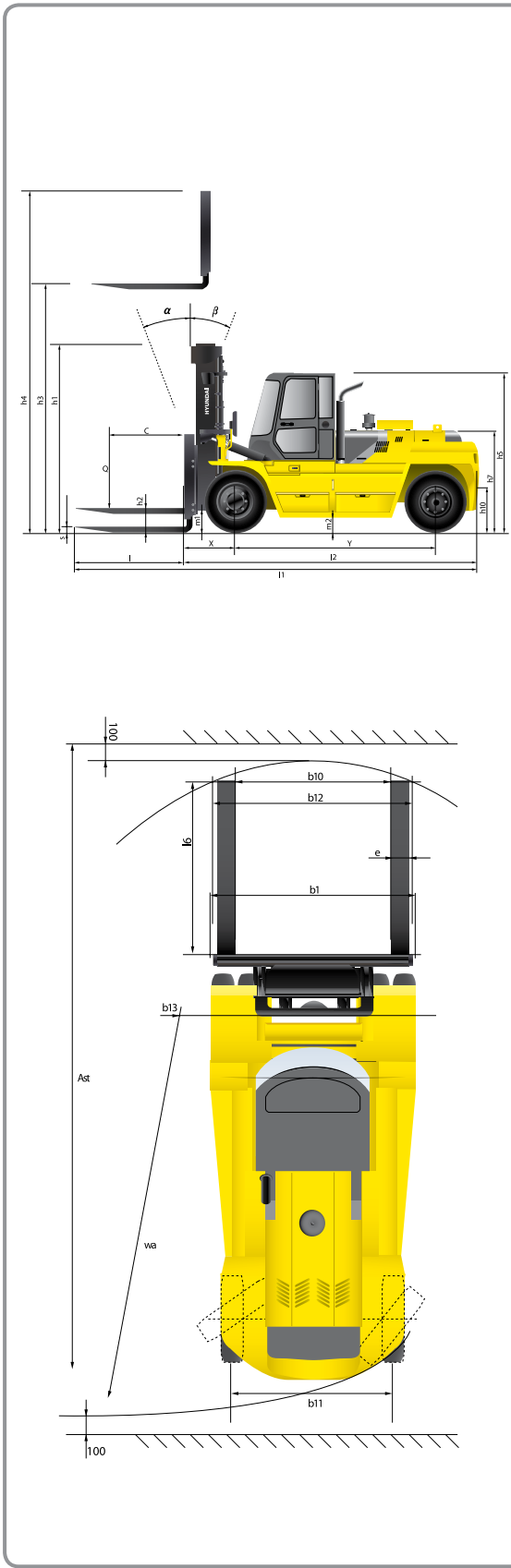
| Mast Type | | Maximum Fork Height (mm) | Overall Height Lowerd (mm) | Tilt Angle (mm) | Load Capacity (600mm LC)(kg) | | Truck Weight Unloaded (kg) | |
|---------------------------|--------|--------------------------|----------------------------|-----------------|------------------------------|---------|----------------------------|---------|
| | | 110 / 130D-7E | | | 110D-7E | 130D-7E | 110D-7E | 130D-7E |
| 2-Stage Limited Free Lift | V300 | 3,005 | 3,000 | 15 / 12 | 11,000 | 13,000 | 15,722 | 16,427 |
| | * V330 | 3,305 | 3,150 | 15 / 12 | 11,000 | 13,000 | 15,797 | 16,503 |
| | V350 | 3,505 | 3,250 | 15 / 12 | 11,000 | 13,000 | 15,847 | 16,552 |
| | V400 | 4,005 | 3,550 | 15 / 12 | 11,000 | 13,000 | 16,100 | 16,805 |
| | V450 | 4,505 | 3,800 | 15 / 12 | 11,000 | 12,600 | 16,225 | 16,930 |
| | V500 | 5,005 | 4,100 | 15 / 12 | 11,000 | 12,200 | 16,374 | 17,079 |
| | V550 | 5,505 | 4,350 | 15 / 12 | 11,000 | 11,800 | 16,605 | 17,310 |
| | V600 | 6,005 | 4,650 | 15 / 12 | 10,600 | 11,400 | 16,757 | 17,462 |
| | V650 | 6,505 | 4,900 | 15 / 12 | 10,300 | 11,100 | 16,890 | 17,595 |
| | V700 | 7,005 | 5,150 | 15 / 12 | 10,000 | 10,800 | 17,021 | 17,726 |
| 3-Stage Full Free Lift | TF440 | 4,405 | 2,950 | 10 / 10 | 11,000 | 12,300 | 16,761 | 17,467 |
| | TF470 | 4,705 | 3,050 | 10 / 10 | 11,000 | 12,100 | 16,832 | 17,538 |
| | TF500 | 5,005 | 3,150 | 10 / 10 | 11,000 | 11,800 | 16,903 | 17,609 |
| | TF550 | 5,505 | 3,317 | 10 / 10 | 10,600 | 11,500 | 17,070 | 17,776 |
| | TF600 | 6,005 | 3,484 | 10 / 10 | 10,300 | 11,100 | 17,188 | 17,894 |
| | TF650 | 6,505 | 3,651 | 10 / 10 | 9,600 | 10,800 | 17,402 | 18,108 |
| | TF700 | 7,005 | 3,818 | 10 / 10 | 8,700 | 10,500 | 17,521 | 18,227 |

| Mast Type | | Maximum Fork Height (mm) | Overall Height Lowerd (mm) | Tilt Angle (mm) | Load Capacity (600mm LC) | | Truck Weight Unloaded (kg) | |
|---------------------------|--------|--------------------------|----------------------------|-----------------|--------------------------|---------|----------------------------|---------|
| | | 140 / 160D-7E | | | 140D-7E | 160D-7E | 140D-7E | 160D-7E |
| 2-Stage Limited Free Lift | V295 | 2,950 | 2,950 | 15 / 12 | 14,000 | 16,000 | 18,120 | 18,977 |
| | V300 | 3,010 | 3,250 | 15 / 12 | 14,000 | 16,000 | 18,284 | 19,141 |
| | * V330 | 3,310 | 3,400 | 15 / 12 | 14,000 | 16,000 | 18,378 | 19,235 |
| | V350 | 3,510 | 3,500 | 15 / 12 | 14,000 | 16,000 | 18,423 | 19,280 |
| | V400 | 4,010 | 3,750 | 15 / 12 | 14,000 | 16,000 | 18,710 | 19,567 |
| | V450 | 4,510 | 4,000 | 15 / 12 | 14,000 | 15,900 | 18,865 | 19,722 |
| | V500 | 5,010 | 4,300 | 15 / 12 | 14,000 | 15,900 | 19,047 | 19,904 |
| | V550 | 5,510 | 4,550 | 15 / 12 | 13,600 | 15,200 | 19,316 | 20,173 |
| | V600 | 6,010 | 4,850 | 15 / 12 | 13,200 | 14,600 | 19,498 | 20,355 |
| | V650 | 6,510 | 5,125 | 15 / 12 | 12,800 | 14,100 | 19,664 | 20,521 |
| | V700 | 7,010 | 5,375 | 15 / 12 | 12,500 | 13,800 | 19,815 | 20,672 |
| 3-Stage Full Free Lift | TF395 | 3,964 | 2,950 | 10 / 10 | 14,000 | 15,600 | 19,385 | 20,254 |
| | TF450 | 4,504 | 2,950 | 10 / 10 | 13,900 | 15,300 | 19,546 | 20,415 |
| | TF500 | 5,004 | 3,297 | 10 / 10 | 13,500 | 14,900 | 19,721 | 20,590 |
| | TF550 | 5,504 | 3,464 | 10 / 10 | 12,900 | 14,500 | 19,904 | 20,773 |
| | TF600 | 6,004 | 3,631 | 10 / 10 | 12,600 | 14,100 | 20,059 | 20,923 |
| | TF650 | 6,504 | 3,798 | 10 / 10 | 12,200 | 13,700 | 20,338 | 21,207 |
| | TF700 | 7,004 | 3,965 | 10 / 10 | 11,900 | 13,400 | 20,481 | 21,350 |

Load Capacity



Dimension



Specification

| Identification | | | | |
|------------------|--|-------------------|-------------------|-------------------|
| 1.1 | Manufacturer | Hyundai | Hyundai | Hyundai |
| 1.2 | Manufacturer's type designation | 110D-7E | 130D-7E | 140D-7E |
| 1.3 | Drive: electric (battery or mains),diesel,petrol,fuel gas>manual | DIESEL | DIESEL | DIESEL |
| 1.4 | Type of operation:hand,pedestrian,standing,seated,order-picker | seated | seated | seated |
| 1.5 | Load capacity / rated load | Q (t) | 11.0 | 13.0 |
| 1.6 | Load center distance | c (mm) | 600 | 600 |
| 1.8 | Load distance, center of drive axle to fork | x (mm) | 760 | 770 |
| 1.9 | Wheelbase | y (mm) | 2,900 | 3,300 |
| Weights | | | | |
| 2.1 | Service weight | kg | 15,797 | 16,503 |
| 2.2 | Axle loading, loaded front/rear | kg | 23,717 / 3,080 | 26,702 / 2,802 |
| 2.3 | Axle loading, unloaded front/rear | kg | 7,577 / 8,220 | 7,605 / 8,898 |
| Wheels, Chassis | | | | |
| 3.1 | Tires:solid rubber, superplastic, pneumatic, polyurethane | Pneumatic | Pneumatic | Pneumatic |
| 3.2 | Tires size, front(width x ϕ) | 10.0 - 20 | 10.0 - 20 | 12.0 - 20 |
| 3.3 | Tires size, rear(width x ϕ) | 10.0 - 20 | 10.0 - 20 | 12.0 - 20 |
| 3.5 | Wheels, number front x rear (x=driven wheels) | 4 x 2 | 4 x 2 | 4 x 2 |
| 3.6 | Track width, front | b10 (mm) | 1,842 | 1,842 |
| 3.7 | Track width, rear | b11 (mm) | 1,910 | 1,955 |
| Basic Dimensions | | | | |
| 4.1 | Mast / fork carriage tilt forward / backward(α / β) degrees | 15 / 12 | 15 / 12 | 15 / 12 |
| 4.2 | Lowered mast height | h1 (mm) | 3,000 | 3,000 |
| 4.3 | Free lift | h2 (mm) | 0 | 0 |
| 4.4 | Lift height | h3 (mm) | 3,005 | 3,005 |
| 4.5 | Extended mast height | h4 (mm) | 4,465 | 4,465 |
| 4.7 | Overhead load guard (cab) height | h5 (mm) | 2,900 | 2,900 |
| 4.8 | Seat height / standing height | h7 (mm) | 1,723 | 1,723 |
| 4.12 | Coupling height | h10 (mm) | 600 | 600 |
| 4.19 | Overall length | l1 (mm) | 5,690 | 5,695 |
| 4.20 | Length to face of forks | l2 (mm) | 4,340 | 4,345 |
| 4.21 | Overall width | b1 (mm) | 2,450 | 2,497 |
| 4.22 | Fork dimensions | s / e / l(mm) | 75x200x1,350 | 85x200x1,350 |
| 4.23 | Fork carriage ISO 2328, class / type A,B | Pin Mount | Pin Mount | Pin Mount |
| 4.24 | Fork-carriage width | b12 (mm) | 2,362 | 2,488 |
| 4.31 | Ground clearance, loaded, under mast | m1(mm) | 270 | 270 |
| 4.32 | Ground clearance, centre of wheelbase | m2(mm) | 330 | 330 |
| 4.33 | Aisle width for pallets 1000x1200 crossways | Ast(mm) | 6,496 | 6,501 |
| 4.34 | Aisle width for pallets 800x1200 lengthways | Ast(mm) | 6,496 | 6,501 |
| 4.35 | Turning radius | Wa(mm) | 4,191 | 4,191 |
| 4.36 | Smallest pivot point distance | b13(mm) | 1,516 | 1,748 |
| Performance Data | | | | |
| 5.1 | Travel speed, Unloaded | km/h | 33.3 | 33.2 |
| 5.2 | Lift speed, Loaded/Unloaded | m/s | 0.44 / 0.51 | 0.43 / 0.51 |
| 5.3 | Lowering speed, Loaded/Unloaded | m/s | 0.51 / 0.46 | 0.51 / 0.46 |
| 5.5 | Drawbar pull, Loaded | N | 122,255 | 123,645 |
| 5.7 | Gradient performance, Loaded | % | 47 | 42.4 |
| 5.9 | Acceleration time, Loaded/ Unloaded(10m) | sec | - | - |
| 5.10 | Service brake | hydraulic | hydraulic | hydraulic |
| Engine | | | | |
| 6.1 | Engine manufacturer / type | Cummins QS86.7 | Cummins QS86.7 | Cummins QS86.7 |
| 6.2 | Engine power acc. to ISO 1585 | kW | 119 | 119 |
| 6.3 | Rated speed | 1/min | 2,200 | 2,200 |
| 6.4 | No. of cylinder / cubic capacity | /cm ³ | 6 / 6,700 | 6 / 6,700 |
| 6.5 | Fuel consumption acc. To VDI cycle | ℓ / h | 11.0 | 11.5 |
| Other Details | | | | |
| 8.1 | Type of drive control | Toque Convert 3/3 | Toque Convert 3/3 | Toque Convert 3/3 |
| 8.2 | Operating pressure for attachments | bar | 150 | 150 |
| 8.3 | Oil volume for attachments | l/min | 295 | 295 |
| 8.4 | Sound level at driver's ear according to DIN 12 053 | db(A) | 82 | 82 |
| 8.5 | Tow coupling, type DIN | - | - | - |