



Manufacturers Rep Company

A collaborative problem solving resource for tested, code compliant and sustainable building envelope products and assemblies in the Midwest.



www.schwabgroup.net





Cladding/Wall Panel
Thermal Bridging Solutions



Column Base
Thermal Bridging Solutions



Parapet Roof Penetration
Thermal Bridging Solutions



Foundation Wall
Thermal Bridging Solutions



Masonry Shelf Angle
Thermal Bridging Solutions

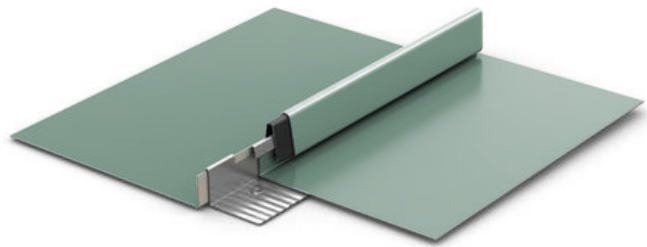


Steel Balcony/Canopy
Thermal Bridging Solutions

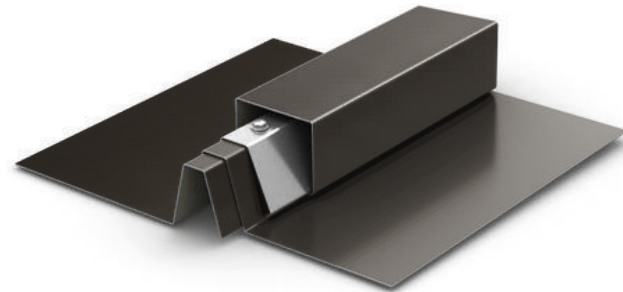




Since 1970, Berridge has provided customers with the industry's highest quality metal roofing and siding products.



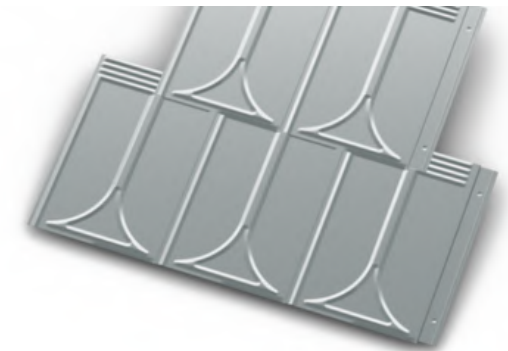
Standing Seam Systems



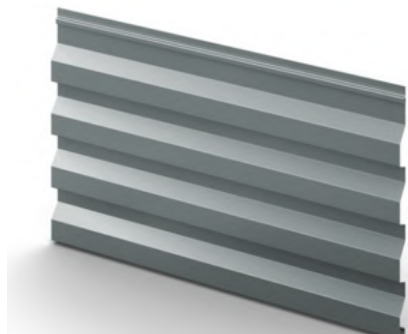
Alternative Systems



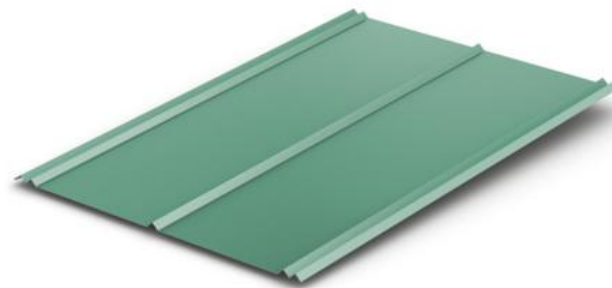
Simulated Tile Systems



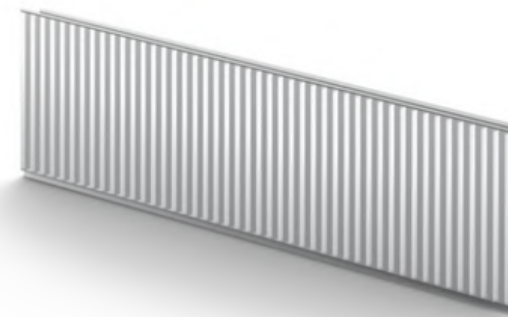
Shingle Systems



Wall, Soffit, Ceiling &
Fascia Panel Systems



Exposed Fastener
Panel Systems



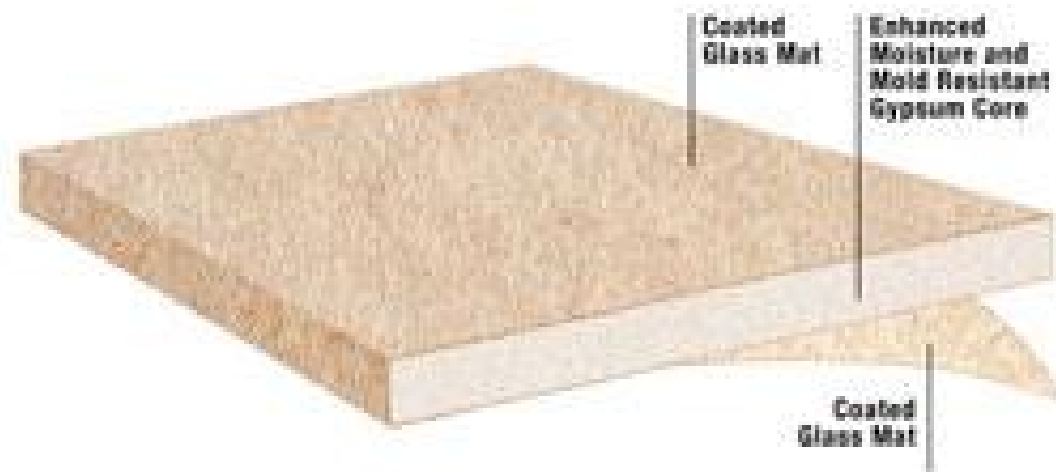
Specialty Application
Systems



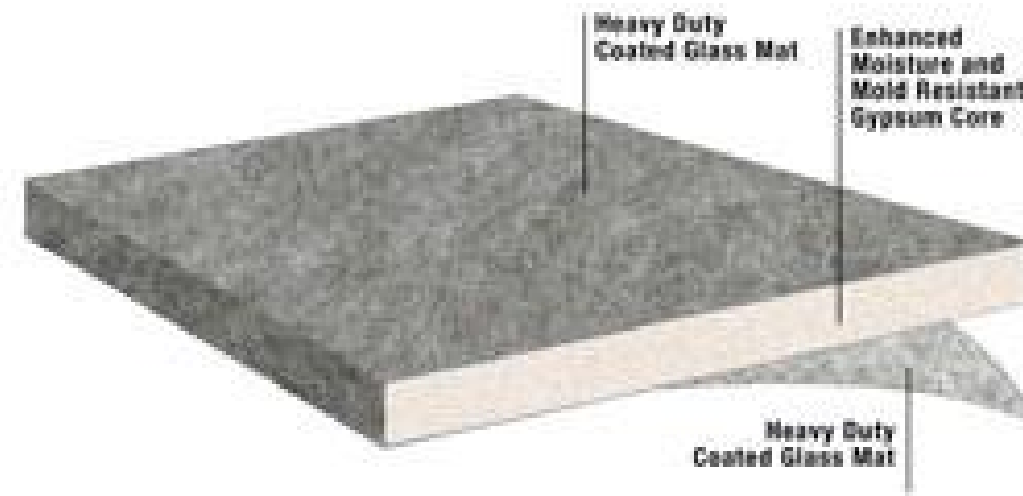
Fencing & Enclosures



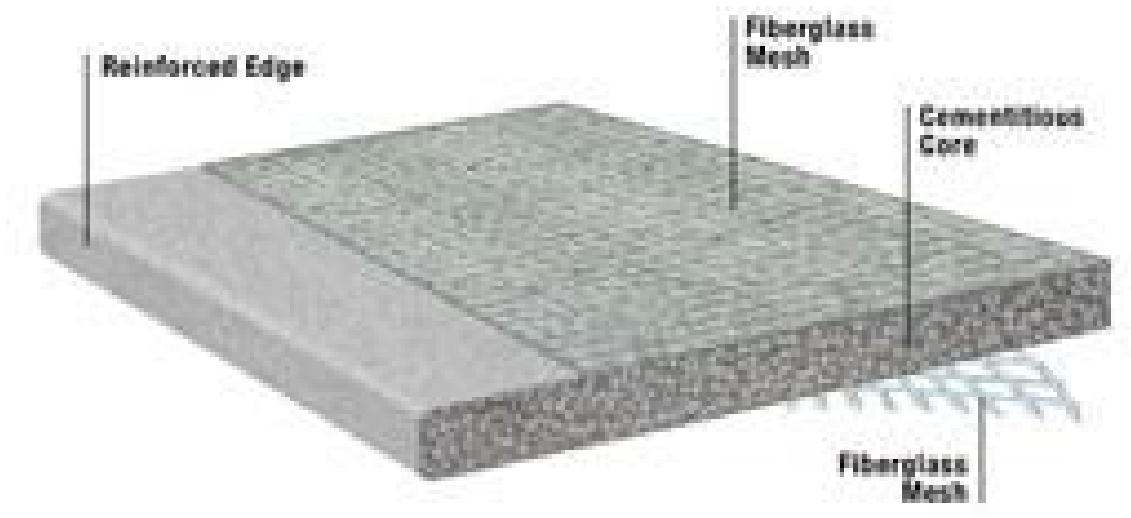
DEXcell[®] BRAND Roof Board



DEXcell Glass Mat
Roof Board



DEXcell FA Glass Mat
Roof Board



DEXcell Cement
Roof Board



Sintered ceramic panels up to 5' x 10' or 4' x 12'.
All-natural materials / Stone look + finishes
Extremely durable + lightweight



Aluminum plate and composite panels up to 5' x 12'
Pre & Post-consumer recycled content / long life cycle



Solar panels in many different sizes 10 color options
Efficient, powerful and reliable BIPV system

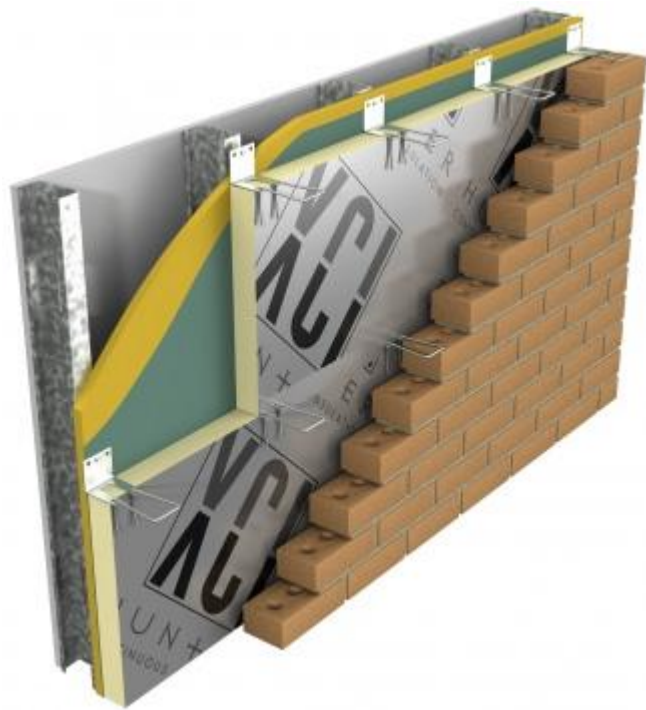


Natural stone panels up to 4' x 8'
Quarried natural stone / super long-life cycle

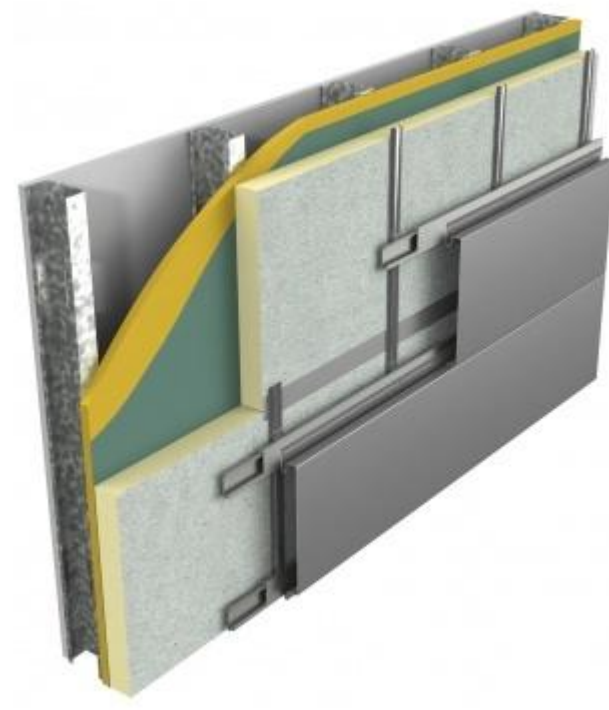




Hunter Xci Wall Polyiso is the leading insulation choice due to its R-Value, energy efficiency, fire performance, availability, code compliance and compatibility within many NFPA compliant wall assemblies.



XCI Foil
XCI Foil Class A



XCI CG
XCI CG Class A



XCI NB



XCI Ply
XCI Ply Class A



XCI 286

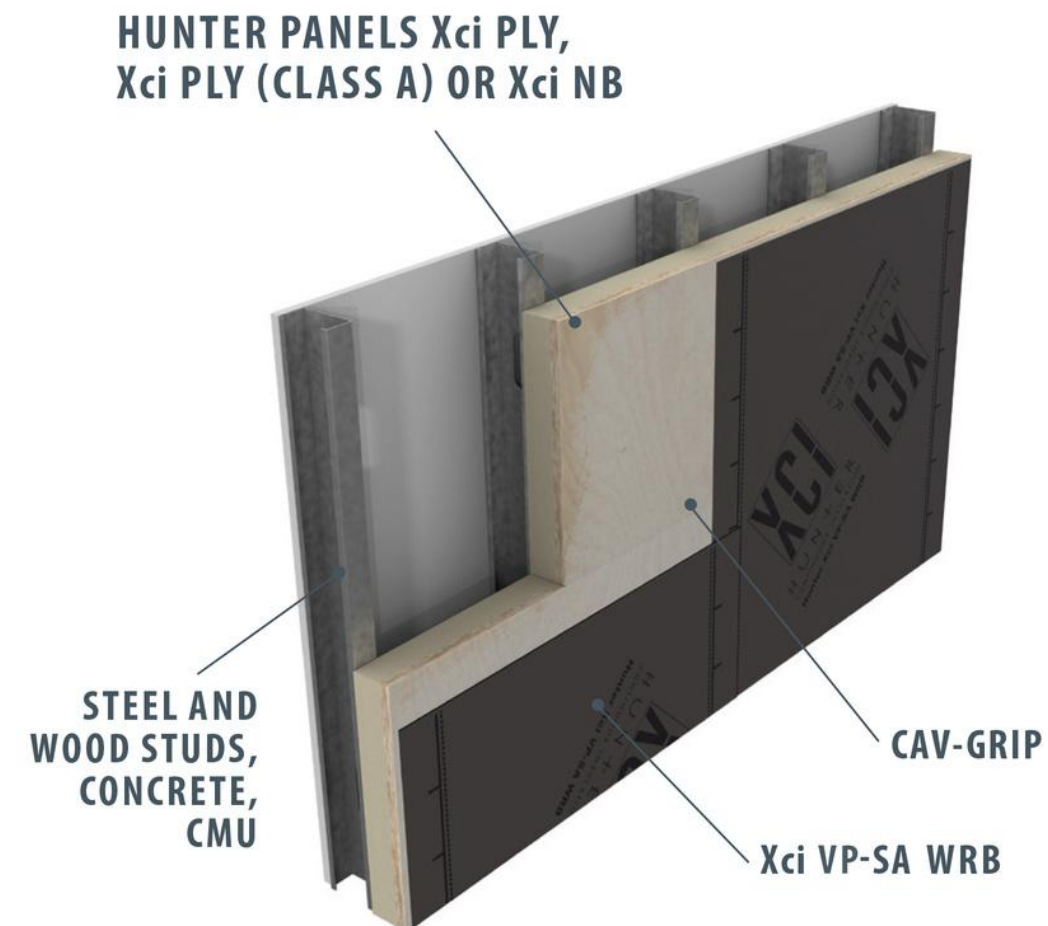




Put the complete Hunter Xci AEGIS Wall System™ to work for you. Hunter Panels has you covered with a single-source solution of products designed to make your next project come together simply and efficiently.

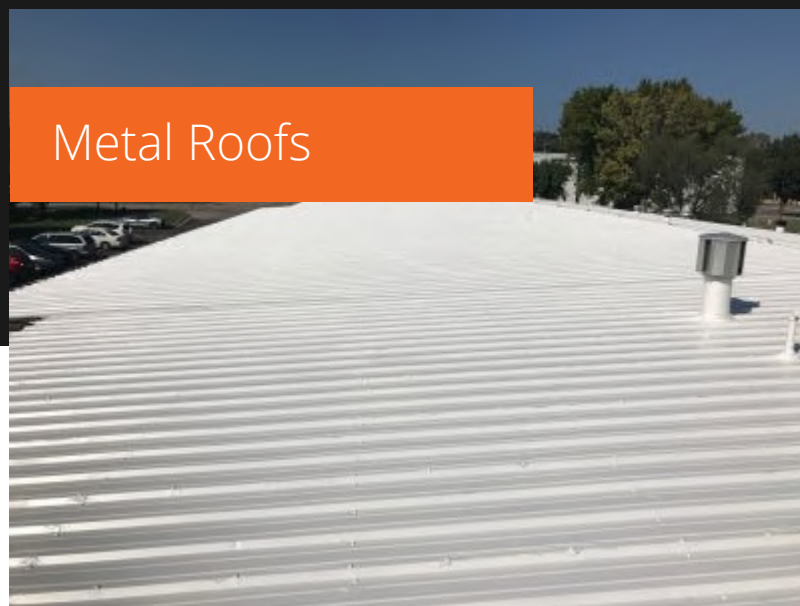


Hunter Panels Xci VP-SA WRB
Vapor Permeable Self-Adhering Air and Water Resistive Barrier





Metal Roofs



Hypalon Single Ply
Roofs



TPO Single Ply
Roofs



Innovative Coatings Since 1978

For over 40 years, Inland Coatings has been the trusted solution for roofing maintenance and repair. Inland offers the following roof coating products - Rubber, Silicone, Polyurethane & Acrylic.

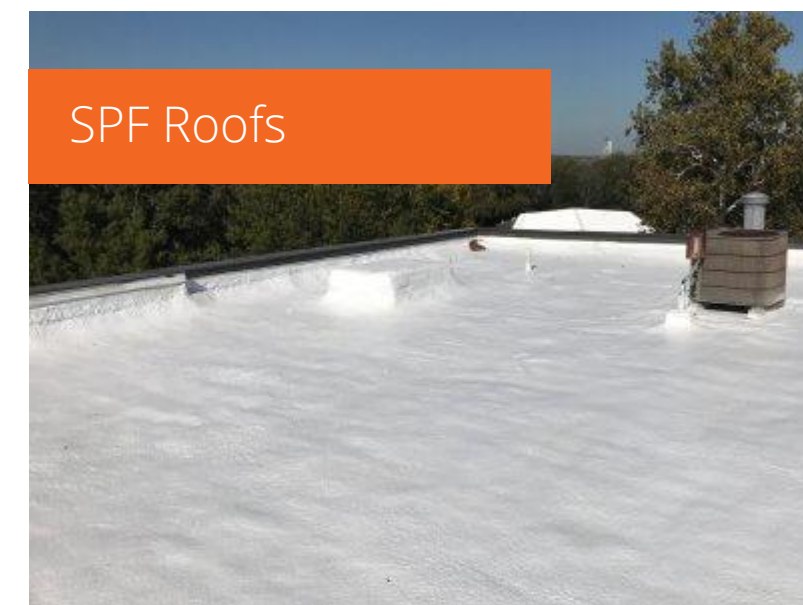
EPDM Single Ply
Roofs



Modified Bitumen
& BUR Roofs



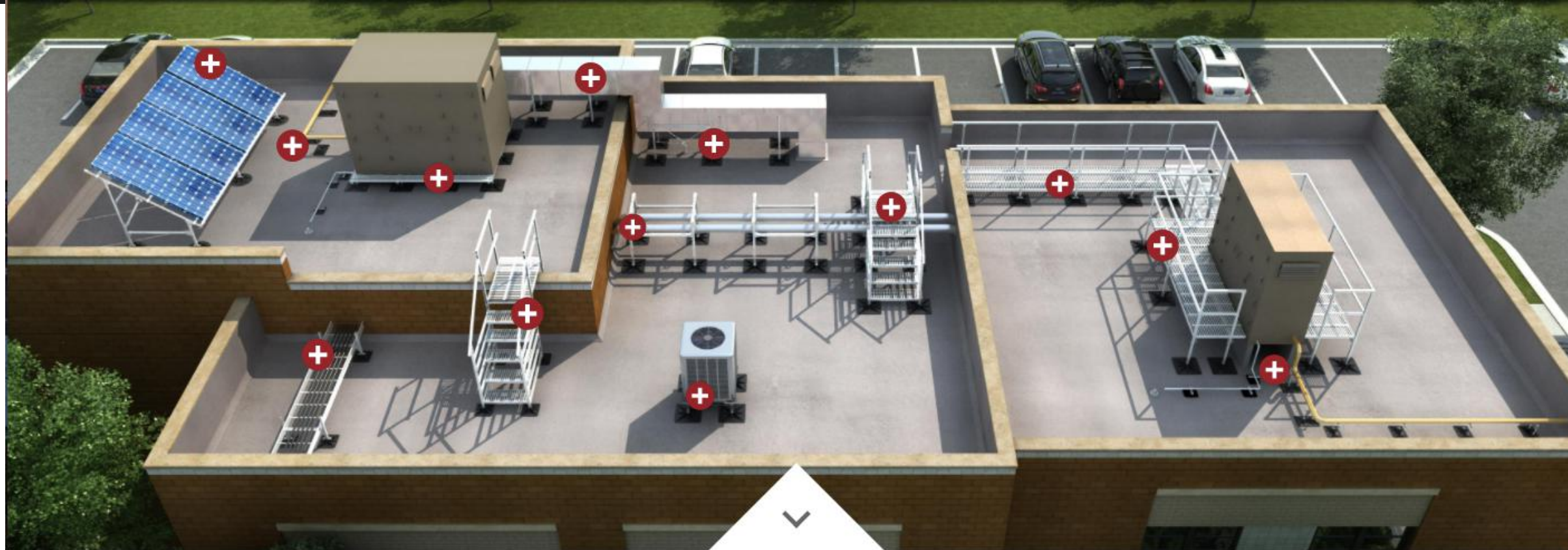
SPF Roofs



PHP[®] SYSTEMS/DESIGN

.....

BUILD IT RIGHT.



Pipe Supports



Duct Supports



Equipment Supports



Cable Tray Supports



Walkways / Crossovers



Stairs / Ramps



Platform Systems



Solar Panel Mounts



PROSOCO

On The Wall Field Coatings



Cat 5



Cat 5
Rain Screen



Cat 5 ICF



Cat 5
Rain Screen ICF



Spray Wrap
MVP



Spray Wrap
Rain Screen



VB
(Vaper Barrier)

Rough Openings & Penetrations



Joint & Seam
Filler



FastFlash



AirDam



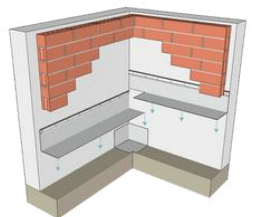
SureSpan EX



SureSpan
Adhesive



Pourus Prep



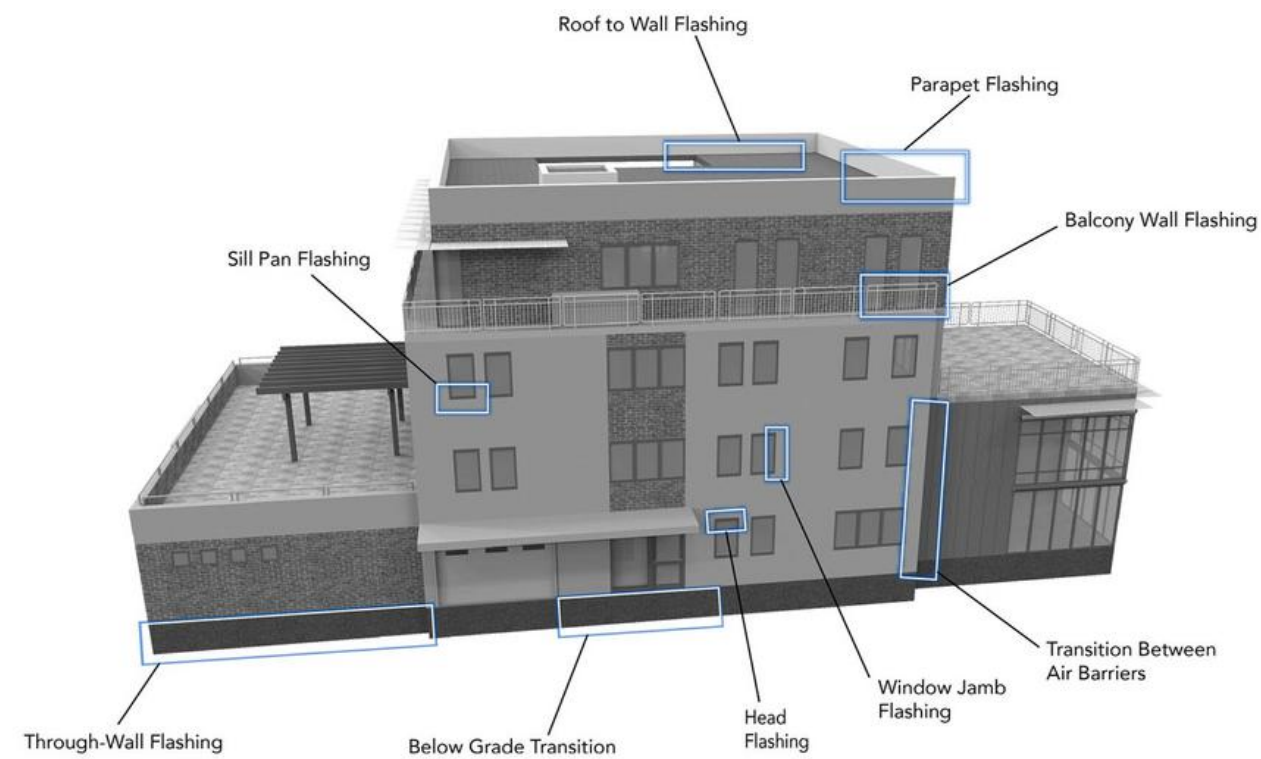
SS ThruWall

Accessories





York Flashings is the inventor of flexible stainless steel fabric flashing, stainless steel self-adhering flashing, drainage plane flashing, non-asphaltic copper fabric flashing and the original copper fabric flashing. Specializing in through-wall flashings and transition membranes, York has been inventing and producing flashings since 1935.



**Stainless Steel
Flashings**

**Asphalt Membrane
Flashings**

**Door & Window
Flashings**

**Copper
Flashings**

**Butyl Membrane
Flashings**

**PVC
Flashings**





Manufacturers Rep Company

A collaborative problem solving resource for tested, code compliant and sustainable building envelope products and assemblies in the Midwest.



www.schwabgroup.net