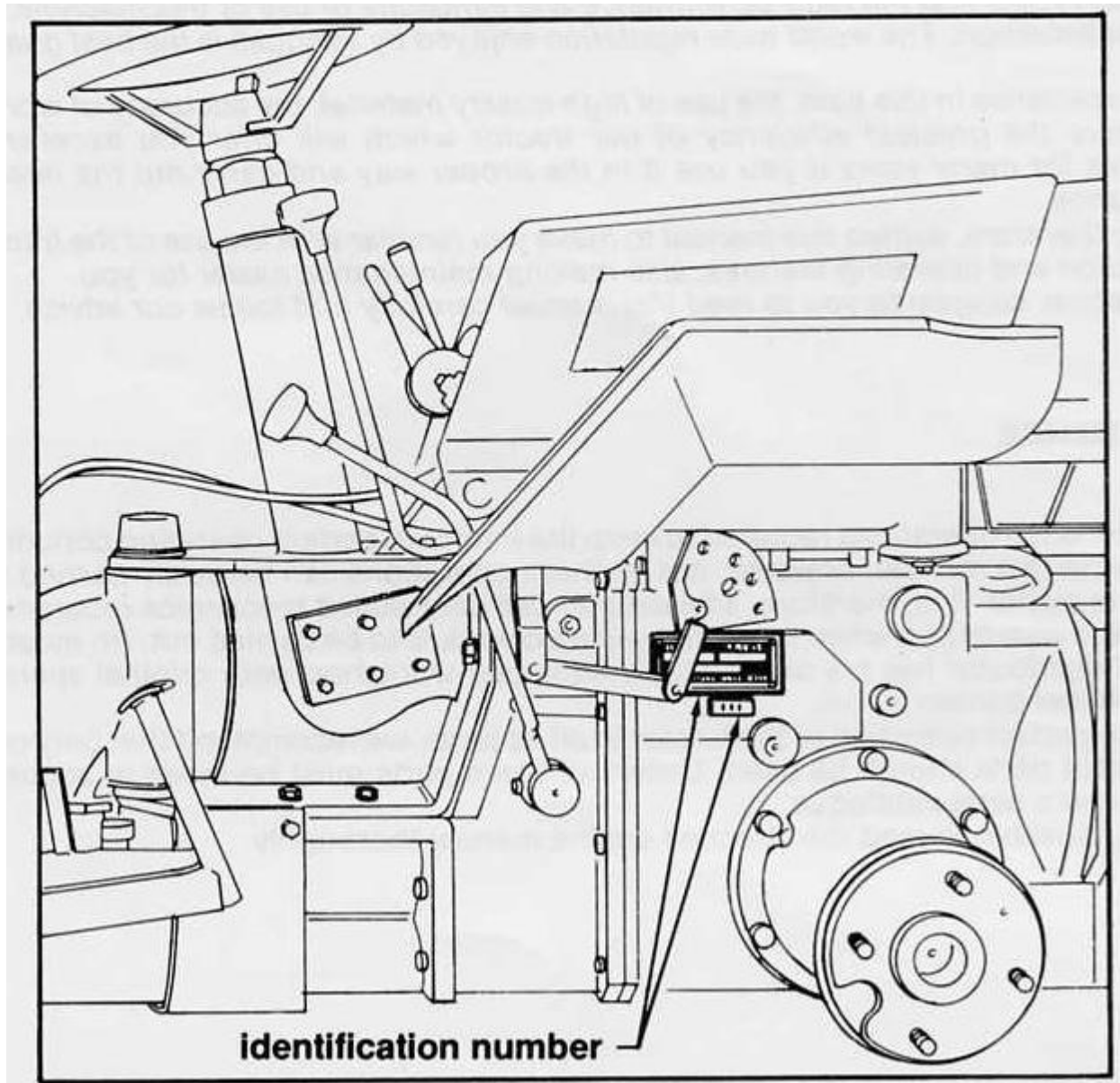


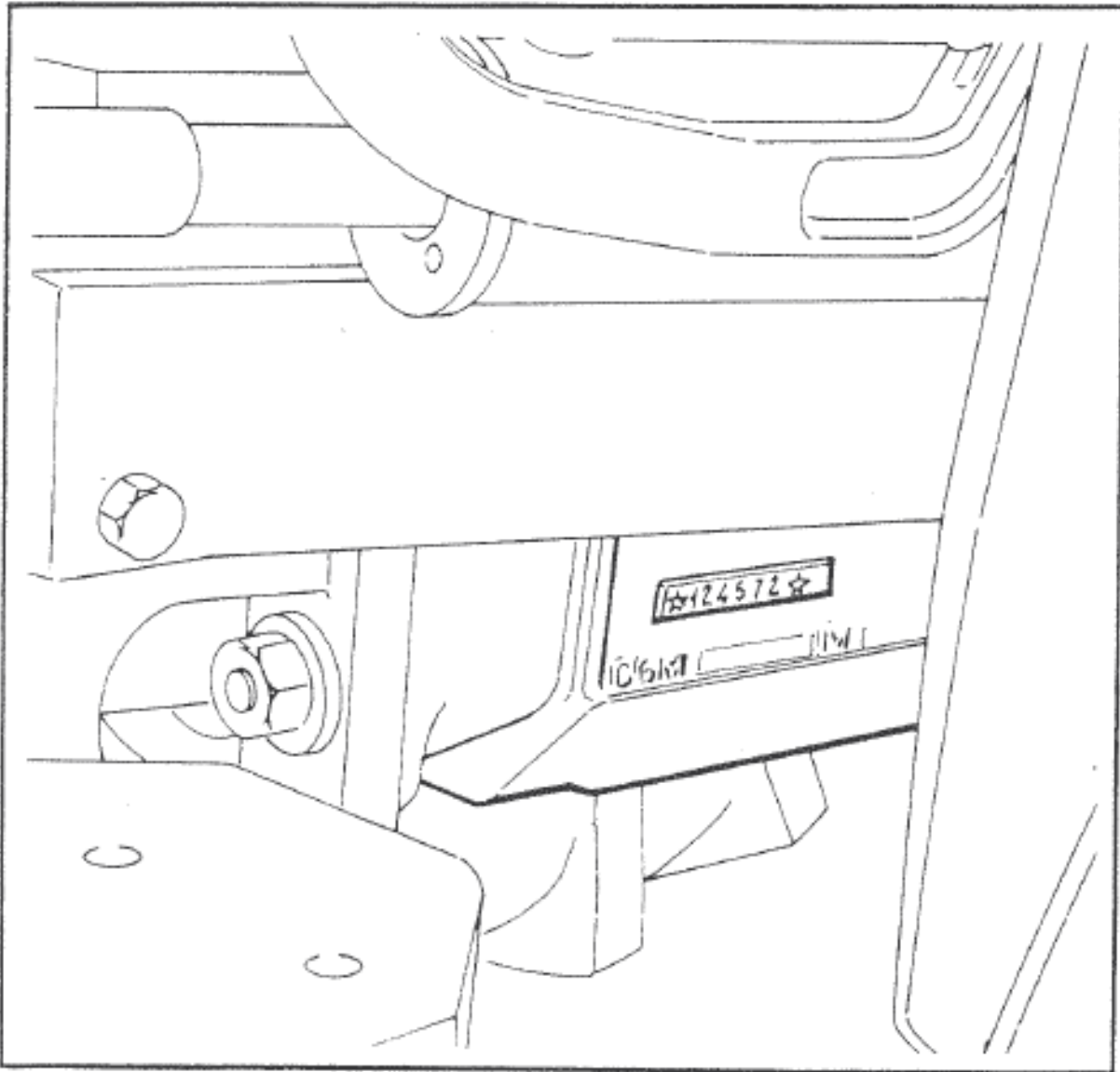
## Pasquali Tractor Identification



The tractor model is identified as TIPO on the tag.

The serial number is normally not needed for 986, 991, 993, 997 or 988 models.

## Ferrari Tractor Identification

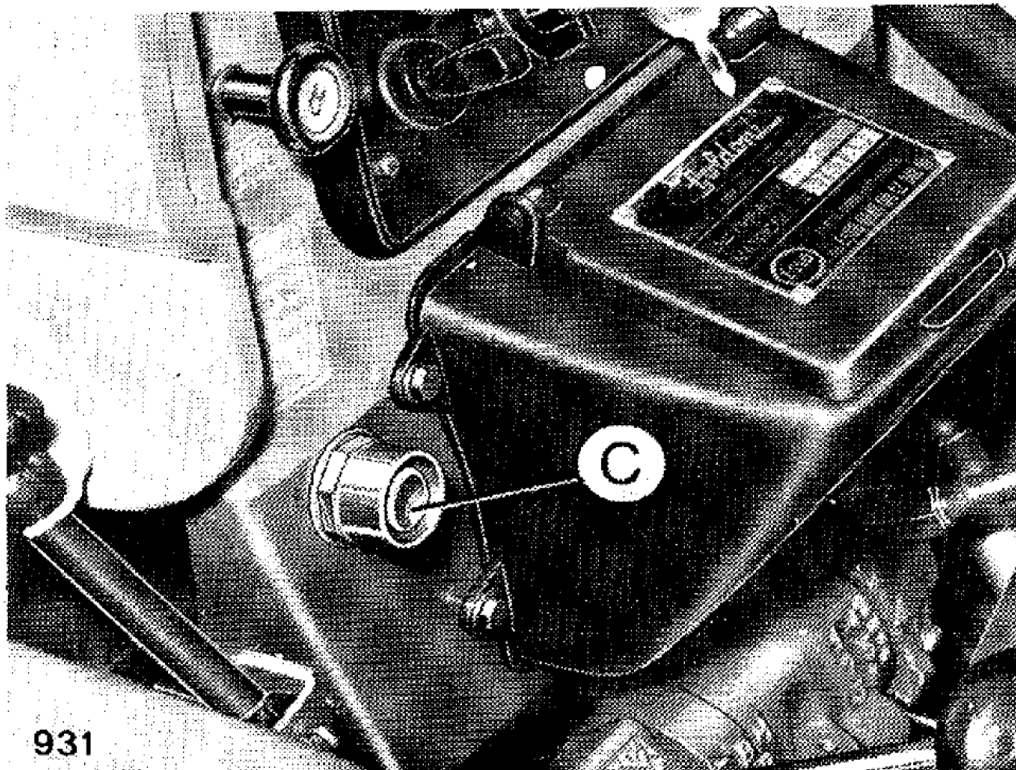


The Ferrari serial number is critical when ordering parts. The serial number can be found on the right side of the gear box near the bottom as pictured. Ferrari serial numbers are bracketed by stars.

The Ferrari model is found on the side of the hood, but normally can be identified by comparing a picture to known examples

## Goldoni Tractor Identification

Universals – Information tag is mounted on the plastic tool box below dash.



Often either the tool box or the lid is missing, so look for a flat below the shift.

