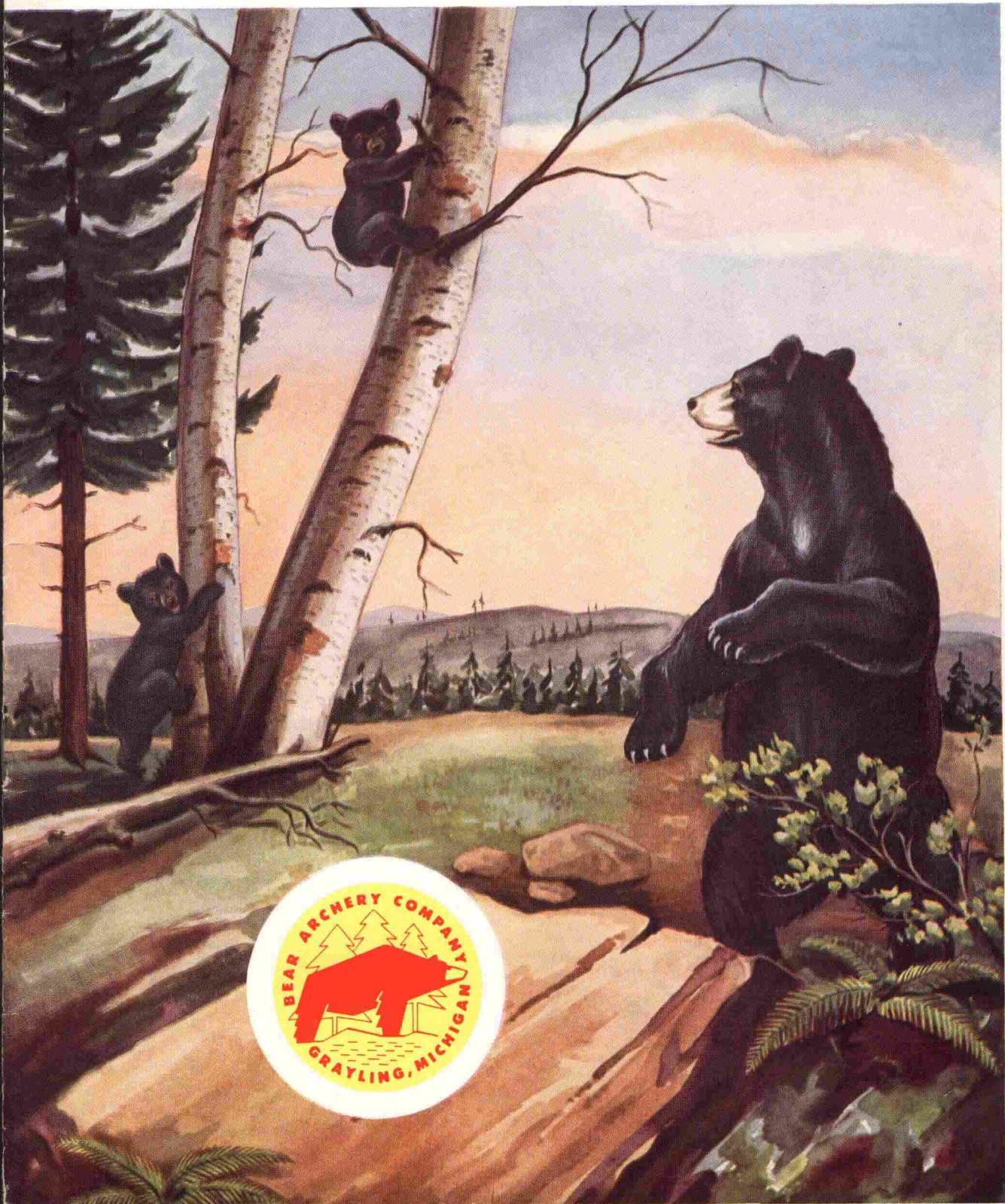


FOR THOSE WHO WANT THE FINEST

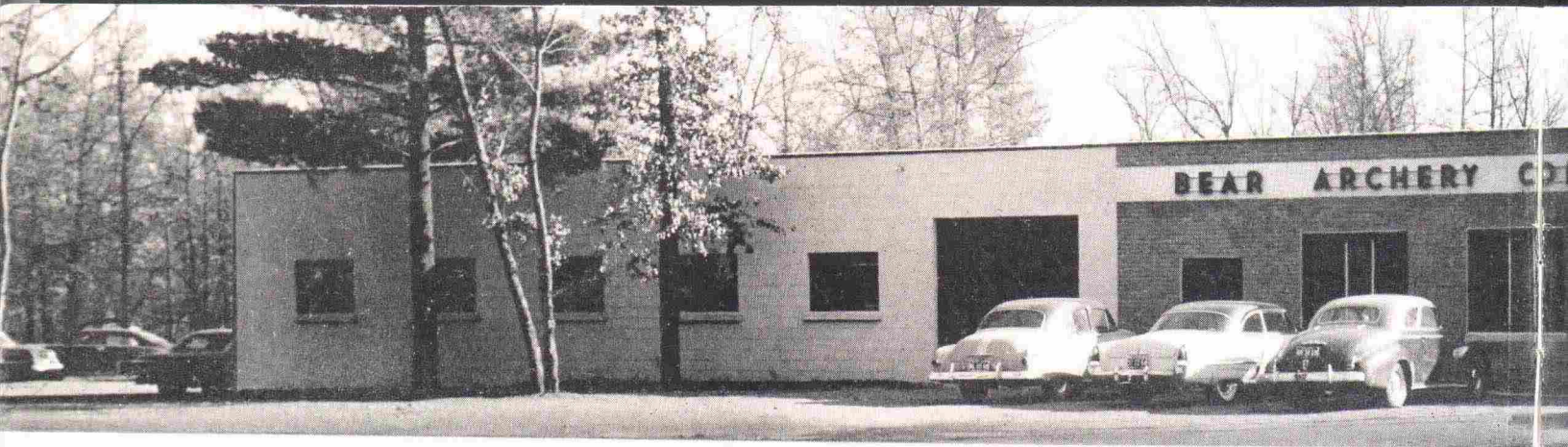
# Bear

# ARCHERY EQUIPMENT

GENERAL CATALOG No. 25







Erected in 1946, this modern building was designed and equipped expressly for the manufacture of fine archery equipment.



Visitors are welcome at the Bear plant. In this new trophy room, the W. B. Westcott collection of Antique Archery is displayed.



Bear products undergo careful scrutiny, with the aid of testing equipment run by men with years of bowmaking experience.



Research and engineering progress is continuous. Fred Bear, president, is directly active in design, development and manufacturing.



*FRED BEAR, founder and president of Bear Archery Company, has a long record in the field of archery. Introduced to the sport by the late Art Young, famous bowhunter often called "the father of modern bow-hunting," Bear soon made archery his life's work. From his broad experience have come many of the*

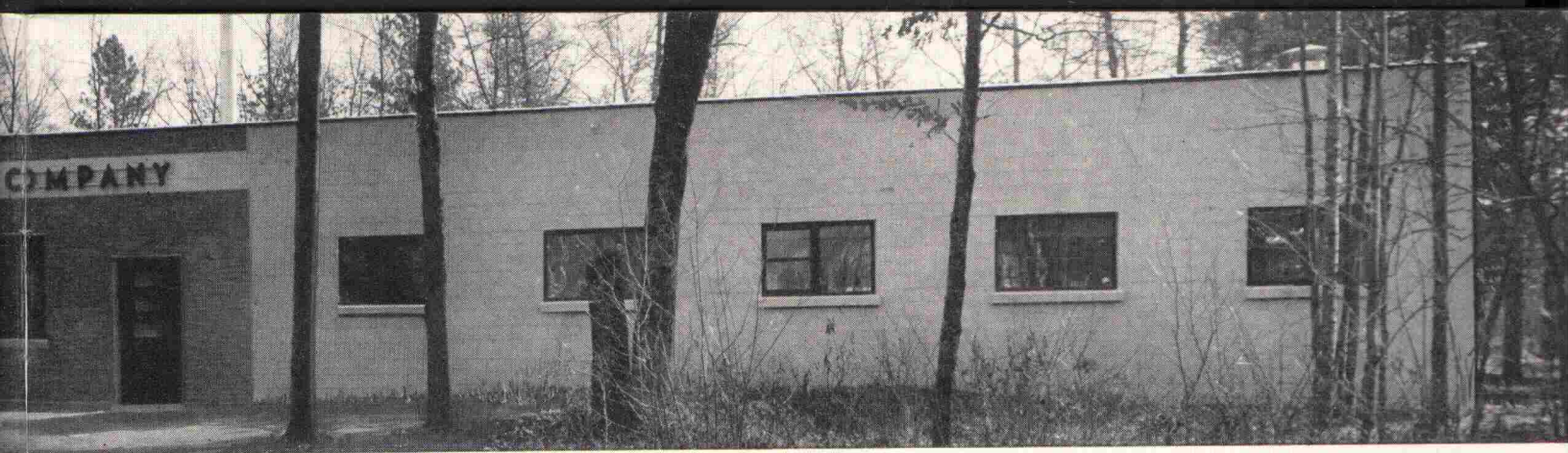
## modern science joins hands

Archery, as a sport, has a romantic history over 5000 years old. Since its popular revival in our time, its thrills and excitement continue to increase as interest mounts to new highs every year. From the first crude bows, down through centuries the bow and arrow became an accurate and deadly weapon of warfare. Today, as more and more turn to archery for sport and relaxation, bow makers are seeking and finding new ways of giving their bows greater power and accuracy.

To us at Bear, archery-making is not a sideline. It is *the* line — and our career. The importance of finding new ways to make each item better is never forgotten. The manufacture of our fine archery tackle is a scientific business employing the most modern type of precision machines and equipment, Bear-designed especially for each job.

All of the materials in use have been tested, re-tested and proved to meet rigid Bear standards of quality. Since 1927, our business has shown a substantial growth every year because we have found what archery enthusiasts want and need in order to get the most enjoyment and satisfaction out of their sport. Through never-ending research, we will continue to produce what expert and novice alike acclaim to be the finest in bows, arrows and leather.





In 1953 a large wing was added (at rear—not visible) to provide facilities necessary for making glass-powered bows.

*original ideas, designs and innovations which make Bear equipment the finest available.*

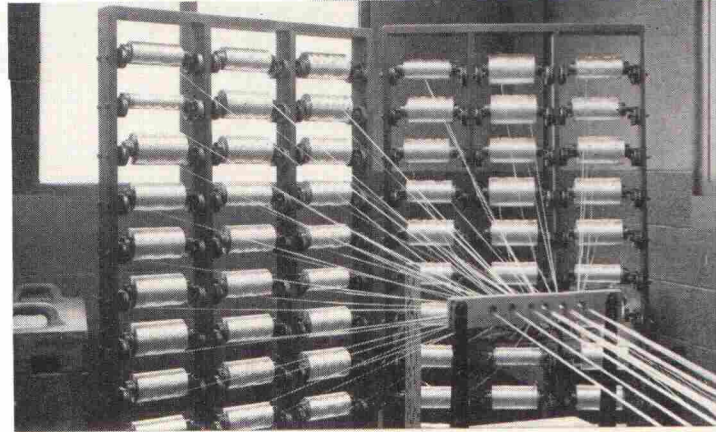
*A three-time Michigan Archery Champion, Fred Bear has assisted in organizing and promoting archery in all its phases. For many years his interests have been devoted to North American big game bowhunting and to the Bear Archery Company at Grayling — in the heart of Michigan's north-woods game country. This firm now employs over 100 people in the design and production of Bear archery equipment.*

## with the art of bowmaking

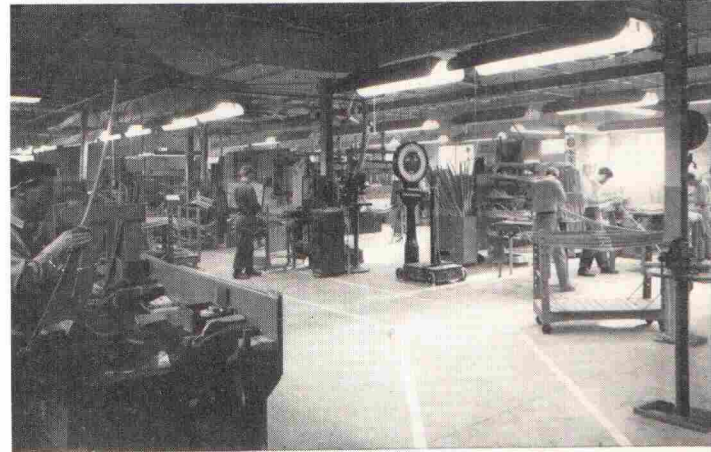
Bear research is all-important. It is as much a part of our products as the glue, leather, wood, glass fibers and other quality materials that make up the finished product. But this research goes far beyond the materials we use — it has been going on for years on the target range, in the fields, woods and mountains. Those who plan our products, direct and operate our company are men of national reputation, men who hold important archery records, bowhunters with record kills. Because they know the value of fine equipment they insist on the best — and produce it here for others.

Bear customers — beginners and champions alike — continually report to us on Bear performance *in actual use*. So the improvements we make are not fads, the whims of one man or untested theories, but the results of months and years of exhaustive product development.

Now, experience for yourself a new sensation of satisfaction in more consistent "close groups" and in greater hunting success with the perfect combination — Bear Glass-powered Bows and Bear Matched Arrows. Remember, too, as your arrow wings true from your Bear Bow to the mark, that it is not an accident — but your own skill, plus the result of years of careful designing by craftsmen who overlook no detail important to accurate long-lived performance.



Where Bear "Glass-power" starts . . . from multiple spools of finest Fiberglas strands — bonded together by a Bear patented process.

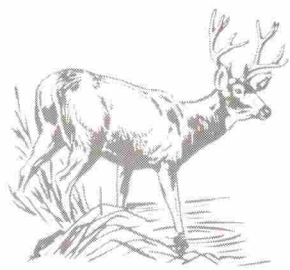


The new factory wing, where Bear Bows are built to exacting requirements under scientifically controlled atmospheric conditions.



In the Tool Room, original production methods and equipment are conceived. Management-production teamwork is evident here

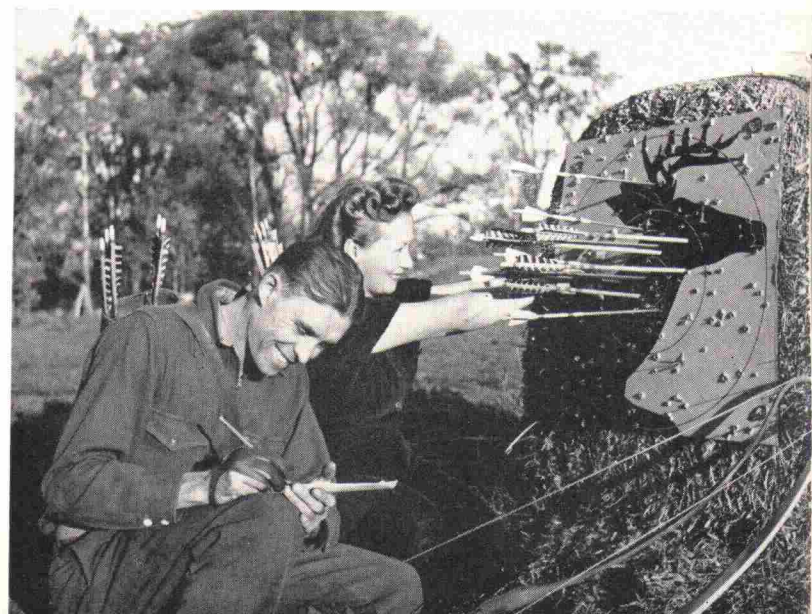
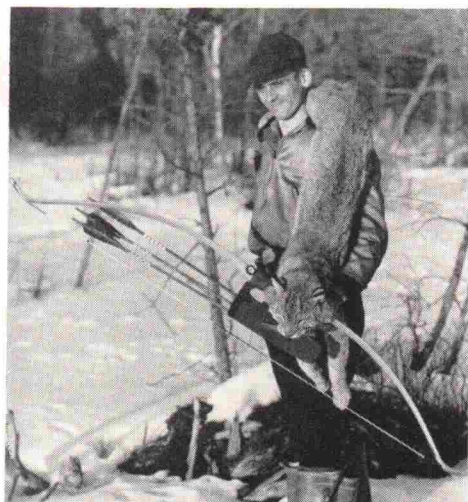




**the sport supreme is yours  
with bow and arrow  
anywhere . . . everywhere!**

The call of the glorious out-of-doors is heard today in ever-increasing voice and volume. At no time has the lure of healthful open air activity brought more response than during the past few years. And the beckoning bow has led thousands into tournament and field competition and through the wilds in search of game. Hunting with bow and arrow has again come into its own!

More and more experienced sportsmen are turning to bowhunting because it gives the quarry a sporting chance too. There's a thrill to bringing down trophies such as these and many an exciting shot is recalled and re-counted around the campfires and feasts that follow the successful hunt . . . But to savor the sport fully, the best of equipment is a "must". Powerful accurate weapons, yet light in the hand and easy to shoot, are necessary for your success in this "sport supreme".





# WHY *Bear*

## GLASS-POWERED

### BOWS ARE BEST...



Embedded in the beautiful saddle-type leather handle of the new KODIAK II Bear Bow is an accurate luminous compass — a practical help to hunters — and exclusive with Bear.

From the experienced archer's or bowhunter's point of view, his requirements are simple but important. He wants a good bow that's fast and smooth, with even build-up all the way back to full draw and with velvet-like recoil. Consistent accuracy, too, is a requisite, as is sustained power or weight regardless of hot or cold temperatures in wet or dry weather . . . And finally, he desires a bow of unusual beauty, grace of line and detailed craftsmanship, one that will be admired by his companions and be a source of pleasure for many years to come.

Combining these many qualities in one bow is more complex than it might appear to be. Yet all of them are built into each Bear glass-powered Bow. But no bow could attain such near-perfection by accident. Such a bow doesn't "just happen". And here is where modern science plays its part.

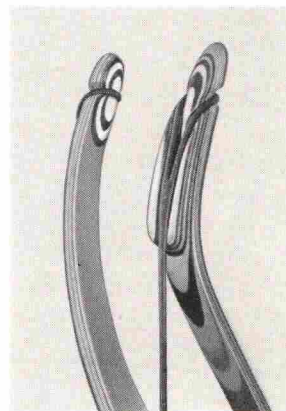
### a technological approach to bow manufacture

In a Bear Bow, the Fibreglas does the real work — the hard maple core serving mainly as a neutral area, a "core" or spacer-anchor, between the Fibreglas face-and-back elements. And in the intricate process of preparing these Fibreglas strips lies the real secret of Bear power, smoothness, durability and long life.

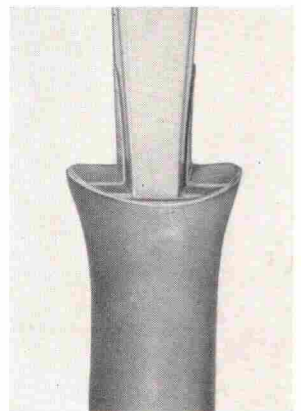
Glass facing and backing on all Bear Bows is produced in the Bear factory. Starting with multiple spools of Fibreglas yarn . . . the taut fibers are combined with plastic resins, processed and cured so that the finished glass strip is composed of thousands upon thousands of closely packed strands of Fibreglas, under equal tension and lying perfectly parallel to each other. During this operation, unique controls insure a "glass-power" element in which each and every strand is uniformly stressed, with every fiber doing its work when the bow is shot.

This exclusive construction is fully protected by Bear patents nos. 2,613,660 and 2,665,678. It provides a functioning element wherein ALL the individual Fibreglas strands in both facing and backing are under equal stresses when the bow nears full draw. ALL fibers "share the load", thereby eliminating the extremely high surface strains that occur when these elements are fabricated by any other method. Result: longer bow life.

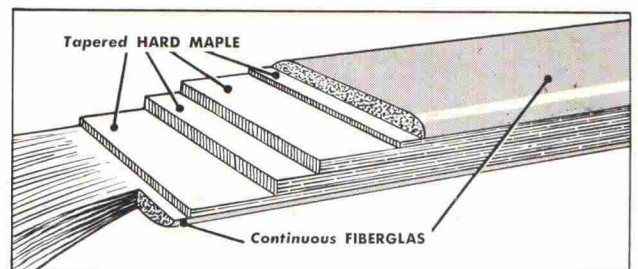
When welded to the tapered hard maple core by modern high-frequency bonding, the result is the fastest, smoothest and lightest bow possible — a bow of enduring beauty and performance unequalled today — a bow that's a thrill to shoot and a joy to own. It is Bear's answer for the discriminating customer who wants the finest.



While employing ultra-modern manufacturing methods, Bear recognizes the value of hand-crafting, too . . . These graceful recurve bow tips are characteristic of the hand finished artisry found in every detail.



Near-center-shot arrow rests on both sides of the bow handle for right or left-handed shooting . . . A new and practical feature found on KODIAK II, GRIZZLY and POLAR glass-powered Bows.



### how power and lightness are built-in

Bear-made Fibreglas face-and-back strips, with tapered plies of hard maple high-frequency bonded between, comprise the unique "sandwich" construction of all Bear Bows. Because of the tremendous strength of this uniformly stressed Fibreglas, relatively thin layers are more than adequate to provide sustained power. This makes possible the weight-saving feature that makes a Bear glass-powered Bow so pleasingly light in the hand.



# Bear Kodiak II



## new working recurve bow— ultimate in performance

Kodiak II delivers arrow after arrow with accuracy, speed and smoothness heretofore unknown. With its remarkable cast and almost unbelievable shooting ease Kodiak II is "Bear at its best" — a custom quality bow you'll be proud to own.

Its exceptional performance is made possible by the use of the working recurve principle combined with correctly balanced handle design. Only by shooting Kodiak II can its extra features be appreciated.

Equipped with luminous compass set into form fitting, saddle-type leather handle of near center shot design, and with double arrow rest.

Kodiak II is made in two lengths:

60" length, 28" draw limit, 35 to 75 lbs. for general hunting use and for those who prefer the convenience of a short bow.

64" length, 30" draw limit, 35 to 75 lbs. for those who like the smoother action of a longer bow.

With double loop bowstring \$49.50

Kodiak II is also available on special order at no extra cost, in both shorter and longer lengths than those listed:

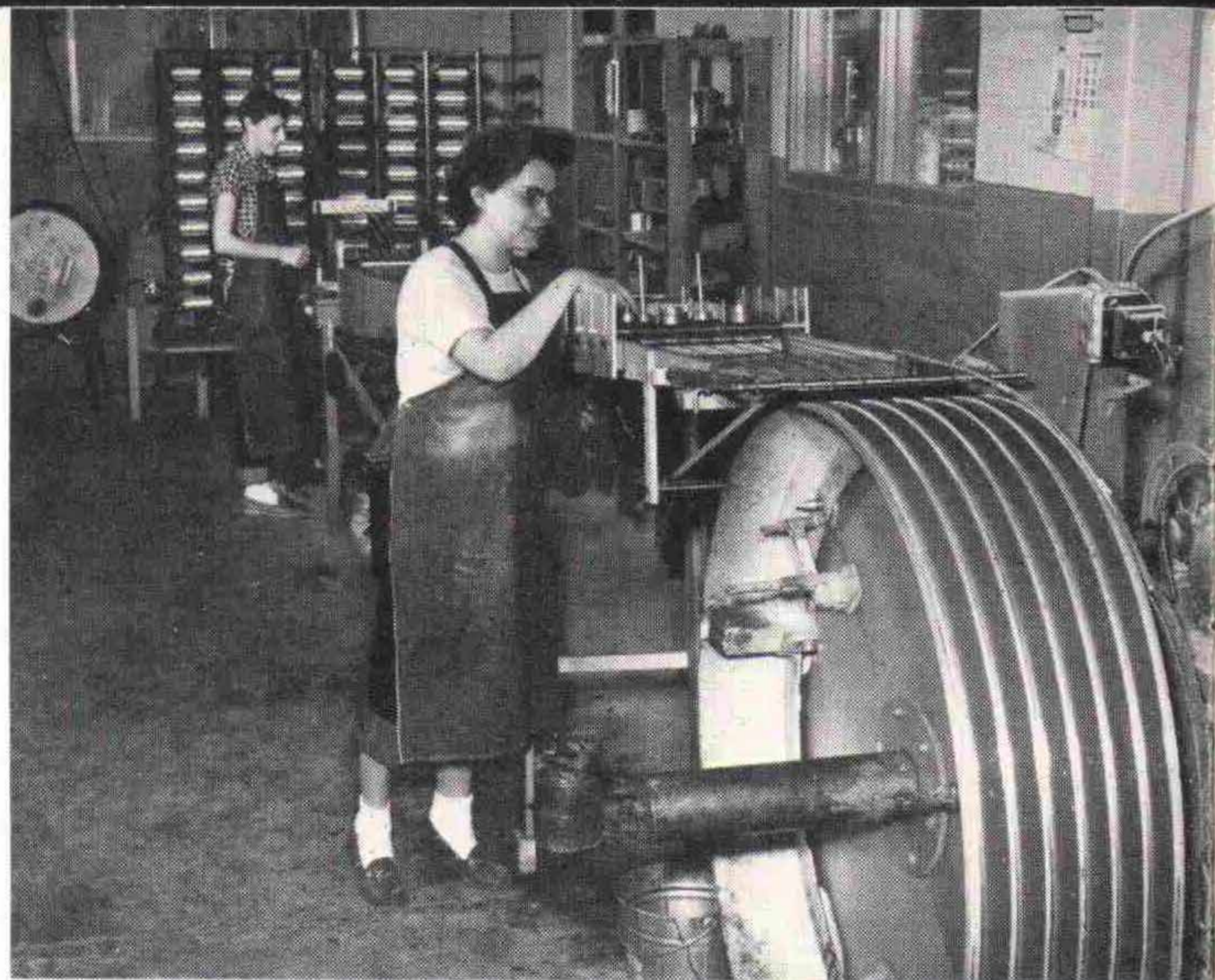
56" length, 26" draw limit, 25 to 60 lbs. at 26". This bow is designed primarily for draw lengths between 24" and 26" where ultimate cast is desired; its proportions are slightly smaller throughout.

68" length, 32" draw limit, 35 to 75 lbs. at 28". This bow is made expressly for those who like a long bow, and is favored for target and tournament use.

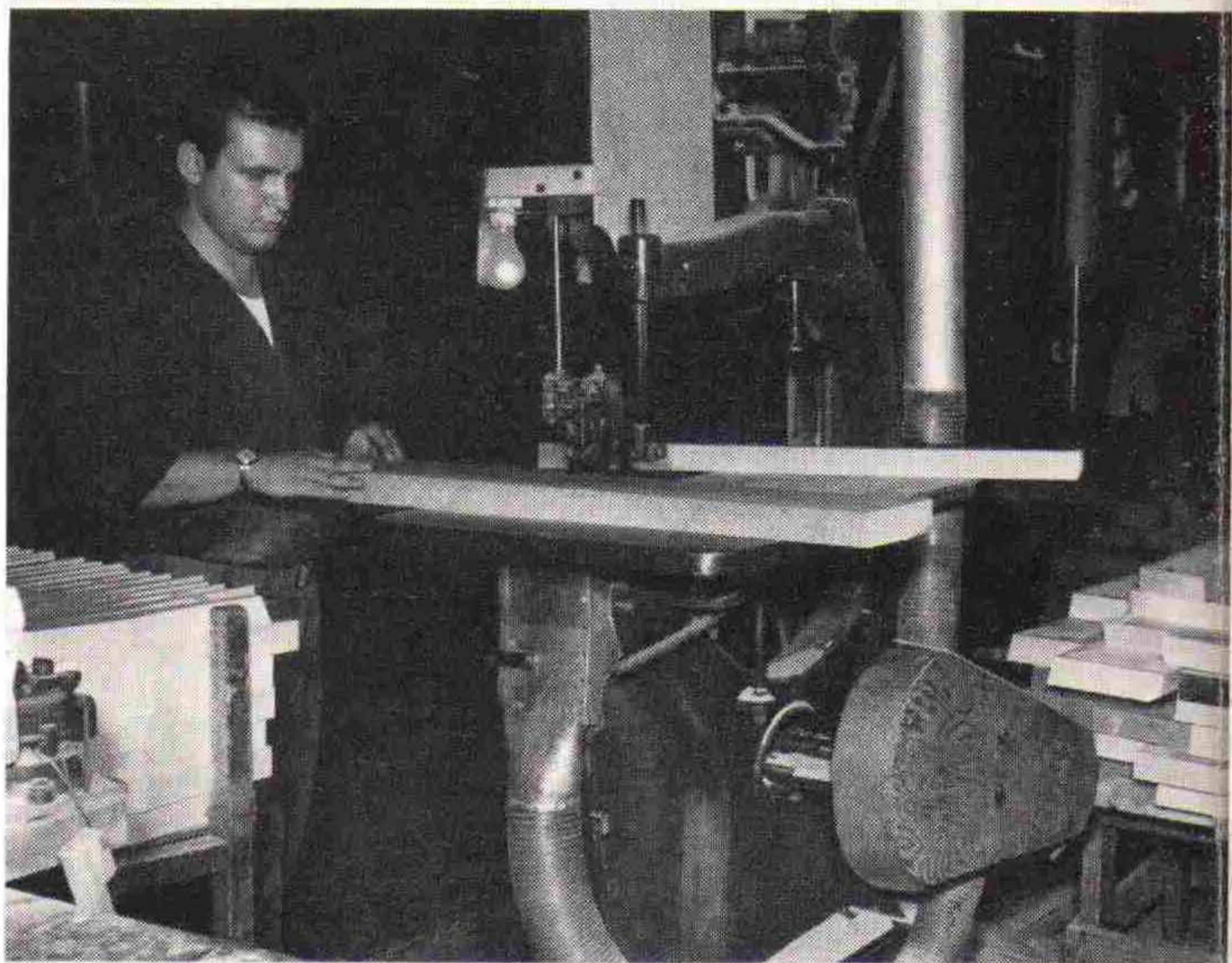
Note: delivery of the 56" and 68" lengths may require 30 days.

**Heavy bows:** weights between 76 and 100 lbs. can be obtained **only** on 64" and 68" bows, on special order and **at \$10.00 extra.**

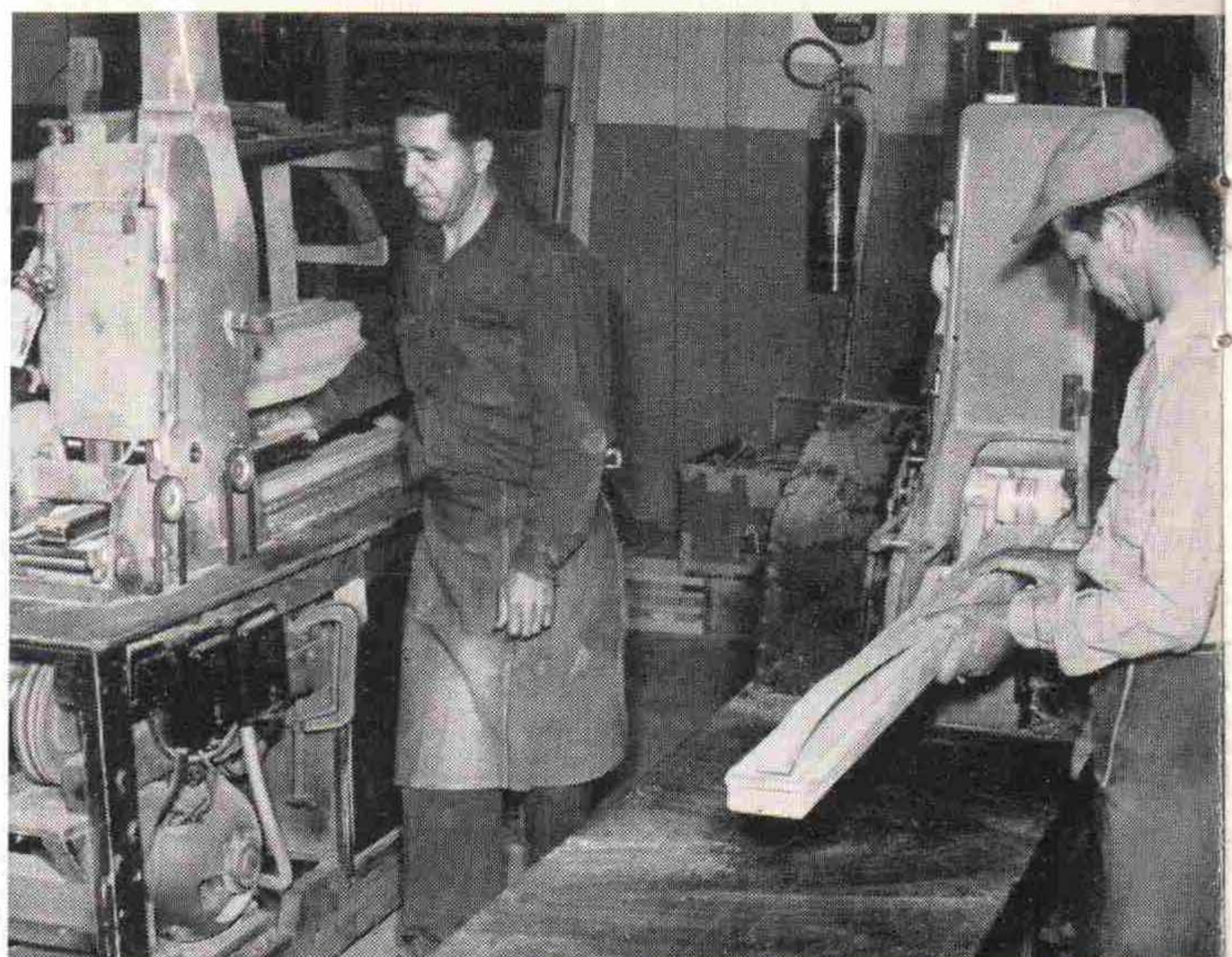
**\$49.50**



Bear "Glass-power" in the making . . . thousands of tough Fiberglass strands are bonded together, running full length of every Bear Bow. Method is protected by U.S. Patents 2,213,660 and 2,665,678.



Sawing select hard maple stock for laminates, or "layers", which become the weight-saving wood cores of all Bear Bows. Here "lightness-in-the-hand" begins—a feature acclaimed by experts.



Precision sanding each piece of bow core stock and Fiberglas to exact size and uniform thickness. Pieces must be accurate and parallel to .001 in., insuring uniformly accurate shooting.



# Bear Grizzly



## hard-hitting favorite of those who know bows best

Here is the world's most popular bow — the model that made the Bear name famous everywhere. This statement is attested by the fact that during the five years since GRIZZLY first appeared, more game has been taken and more top scores shot with it than with any other bow made!

Now, for those who prefer the conventional recurve and the symmetry of GRIZZLY'S graceful lines, we have added the new form-fitting, saddle-type leather handle with its near center shot design and double arrow rest — and at no increase in price. This great bow is the reliable companion of thousands who enjoy target, field, roving or hunting. Acclaimed for its durability and glass-powered, hard hitting effectiveness the GRIZZLY is an outstanding value.

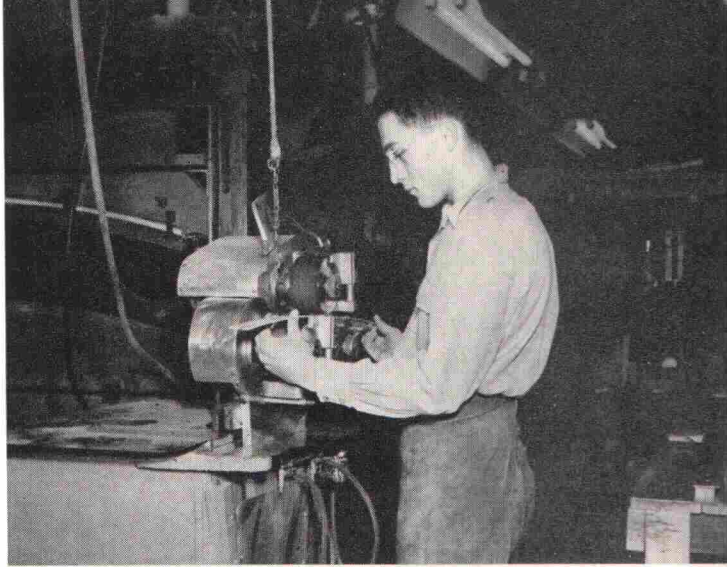
Length, 62". Draw limit, 28".  
Weights, 35 to 75 lbs. Not available  
in other lengths or in heavier weights.  
With double loop bowstring. \$39.50.

### When ordering any Bear Bow

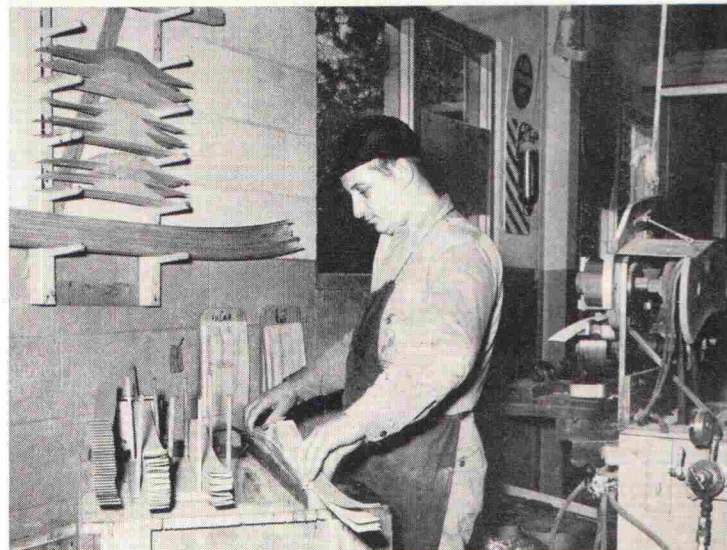
Specify bow length, draw weight and draw length. Unless otherwise requested orders may be filled in weights within two lbs. plus or minus, to expedite delivery.

Unless otherwise stated all bows are weighed at 28" draw and are so marked.

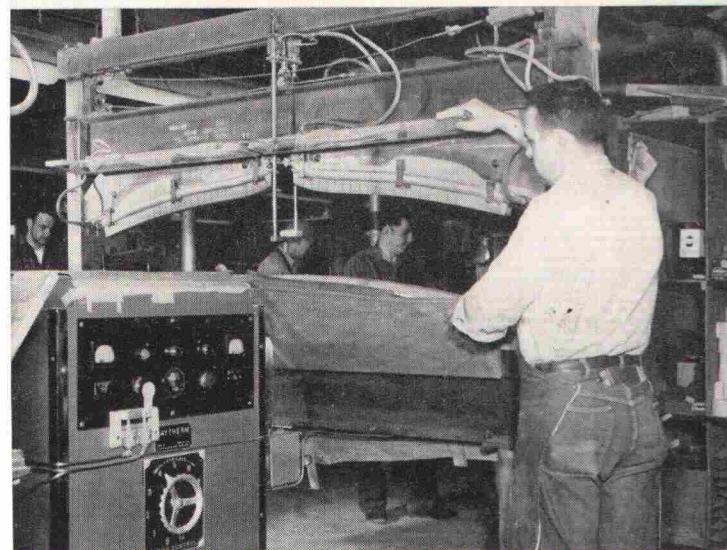
**\$39.50**



Adhesive is mechanically applied to laminates, insuring uniformity ... In this ultra-modern archery plant, are machines for every special operation—many of them Bear-designed and built.



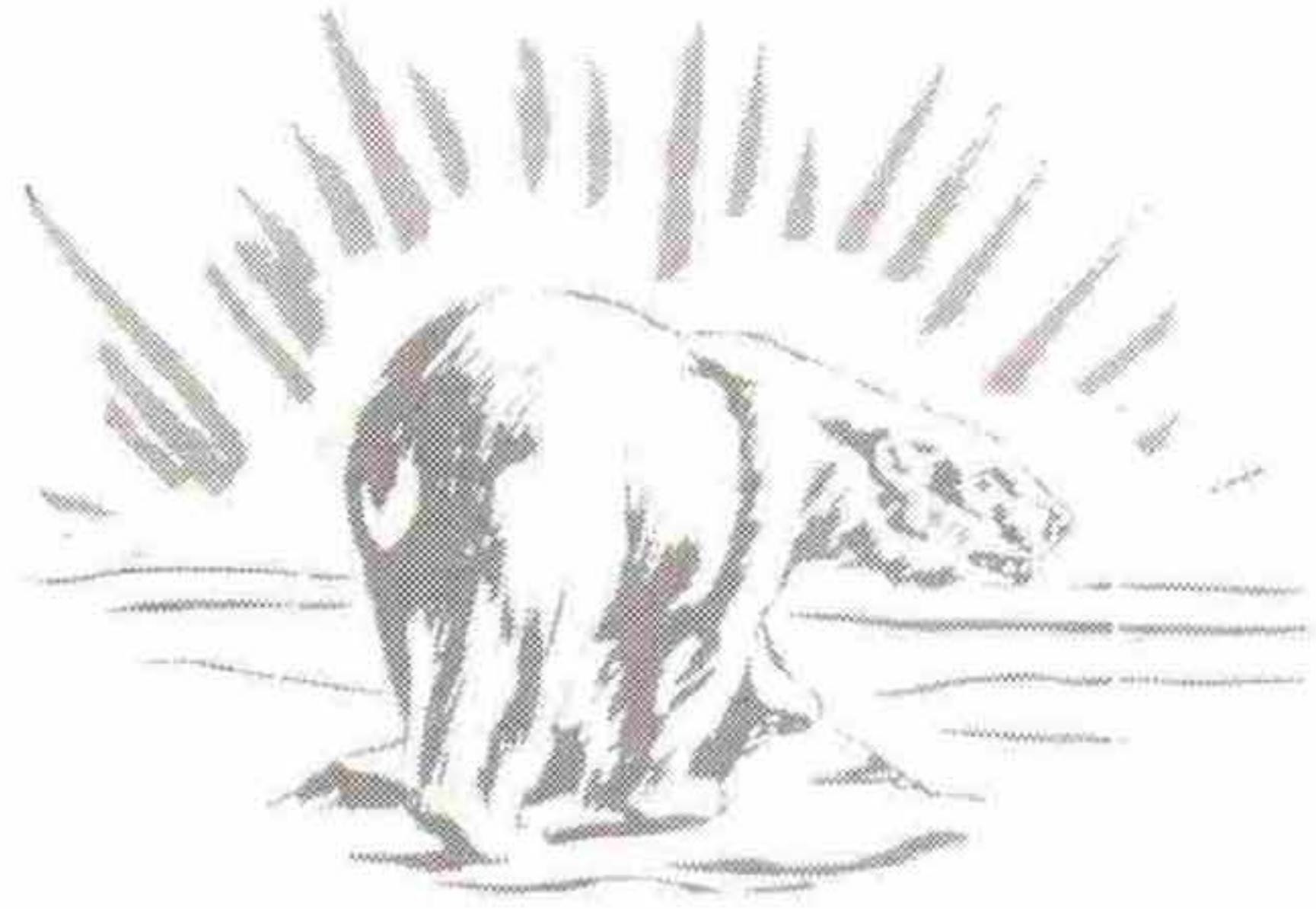
Sub-assembling component parts of a Bear glass-powered Bow—wood core pieces, Fiberglas face-and-backing strips and handle section. Each piece must first pass rigid inspection.



One of the Bear-built assembly presses, where glue is cured by electric high-frequency bonding, assuring long bow life. Here the various laminates are fused into an integral unit.



# Bear Polar



## the top-quality choice of straight bow enthusiasts

A sleek longer-limbed beauty, the POLAR incorporates many of the Grizzly's graceful characteristics but without recurved ends. Exacting tournament shooters and discriminating bowhunters who prefer the straight bow find that POLAR has been designed to meet their requirements with complete satisfaction.

Like all other Bear Bows, this model is faced and backed with Fiberglas over a weight-saving hard maple core. POLAR is a straight bow having shooting qualities usually found only in recurved bows, yet with all the inherent accuracy of the straight bow design.

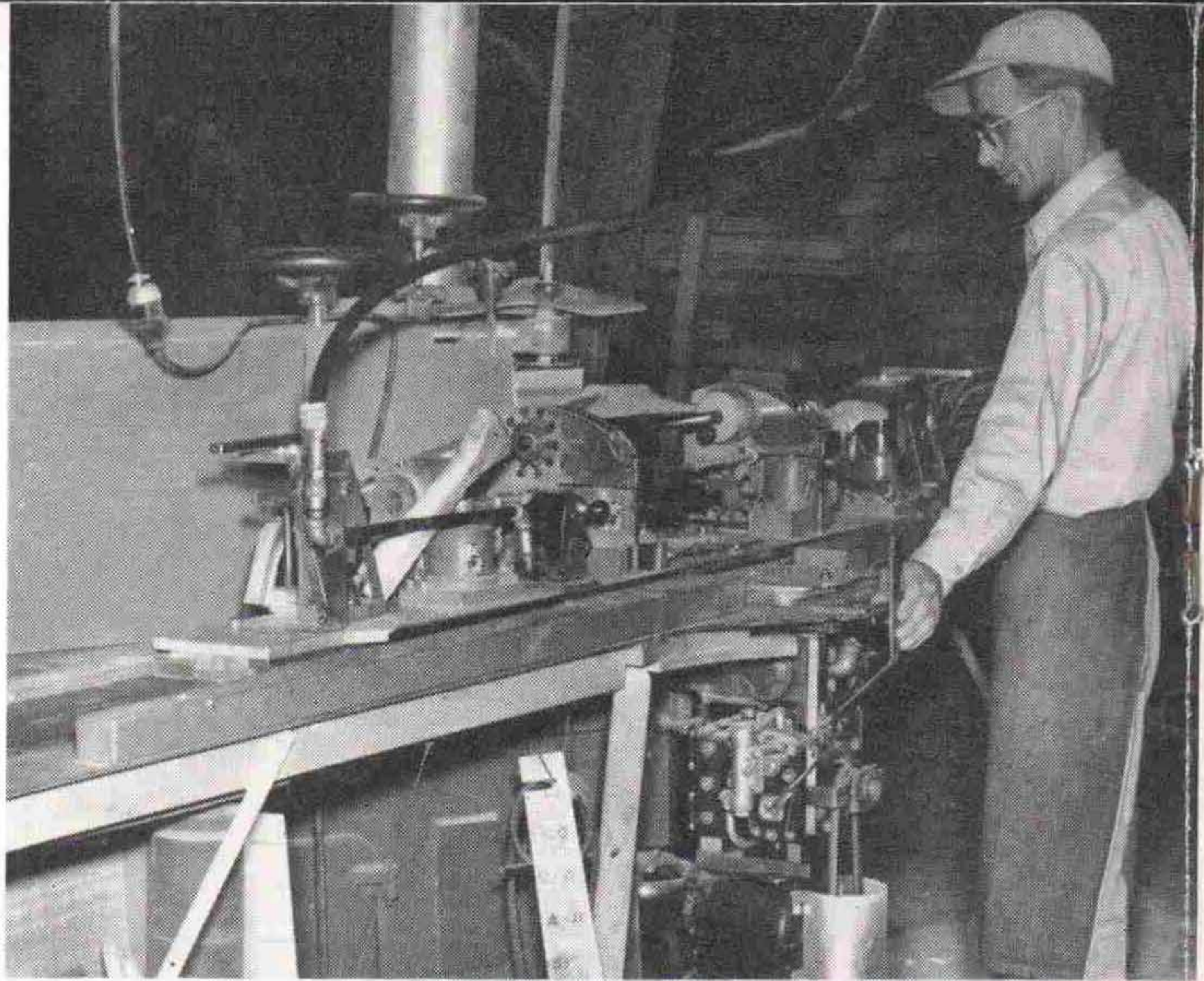
Its new style, form-fitting, saddle-type leather handle includes the double arrow rest and near center shot features.

Length, 64". Draw limit, 30".  
Weights, 35 to 75 lbs.

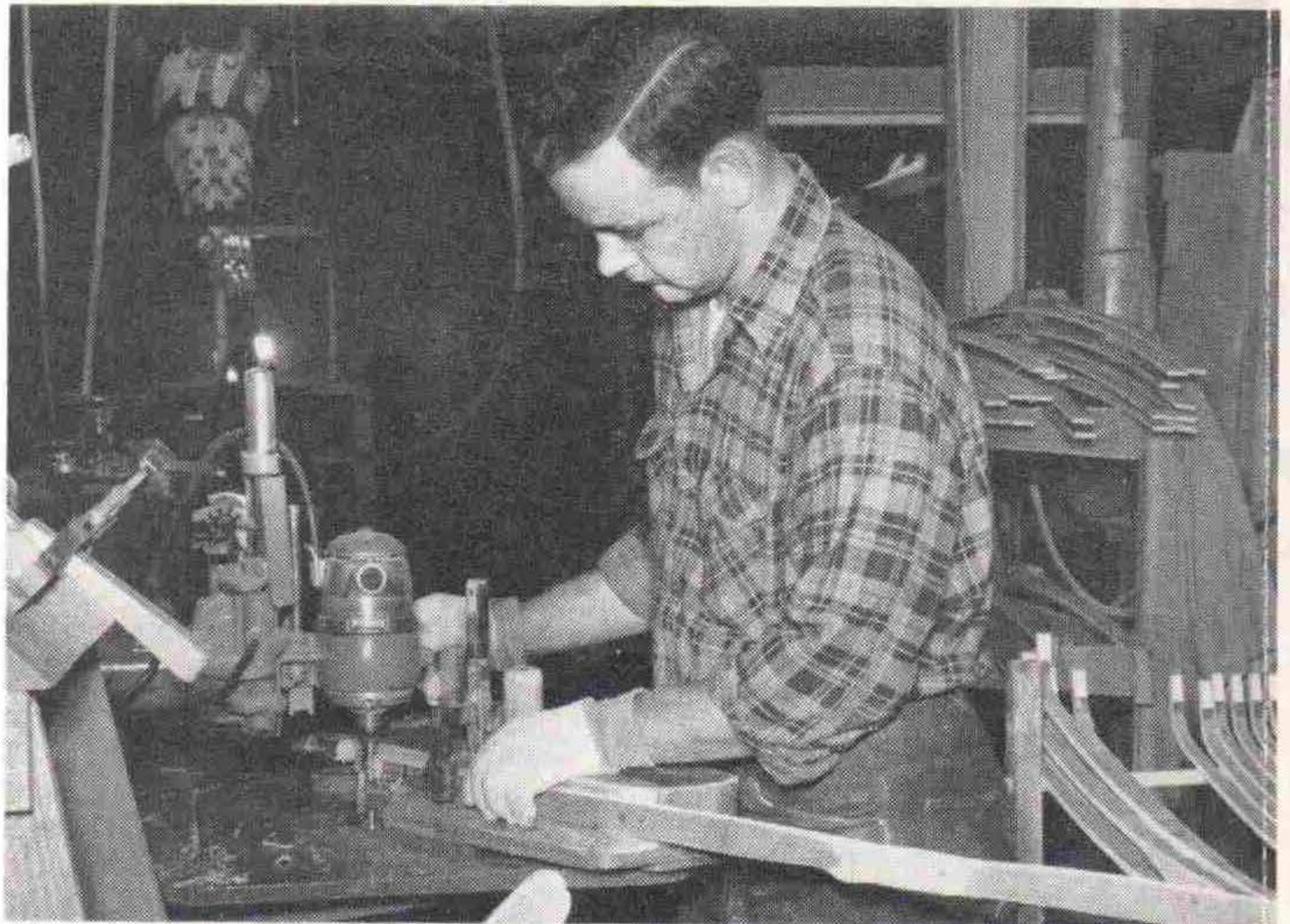
*With double loop bowstring. \$29.50.*

Available in 68" length, 32" draw limit, at no extra charge. Both the 64" and 68" models are also available in heavier weights — 76 to 100 lbs. — at \$10.00 extra. Every Bear Bow is registered and guaranteed. When ordering, specify length, draw length and weight.

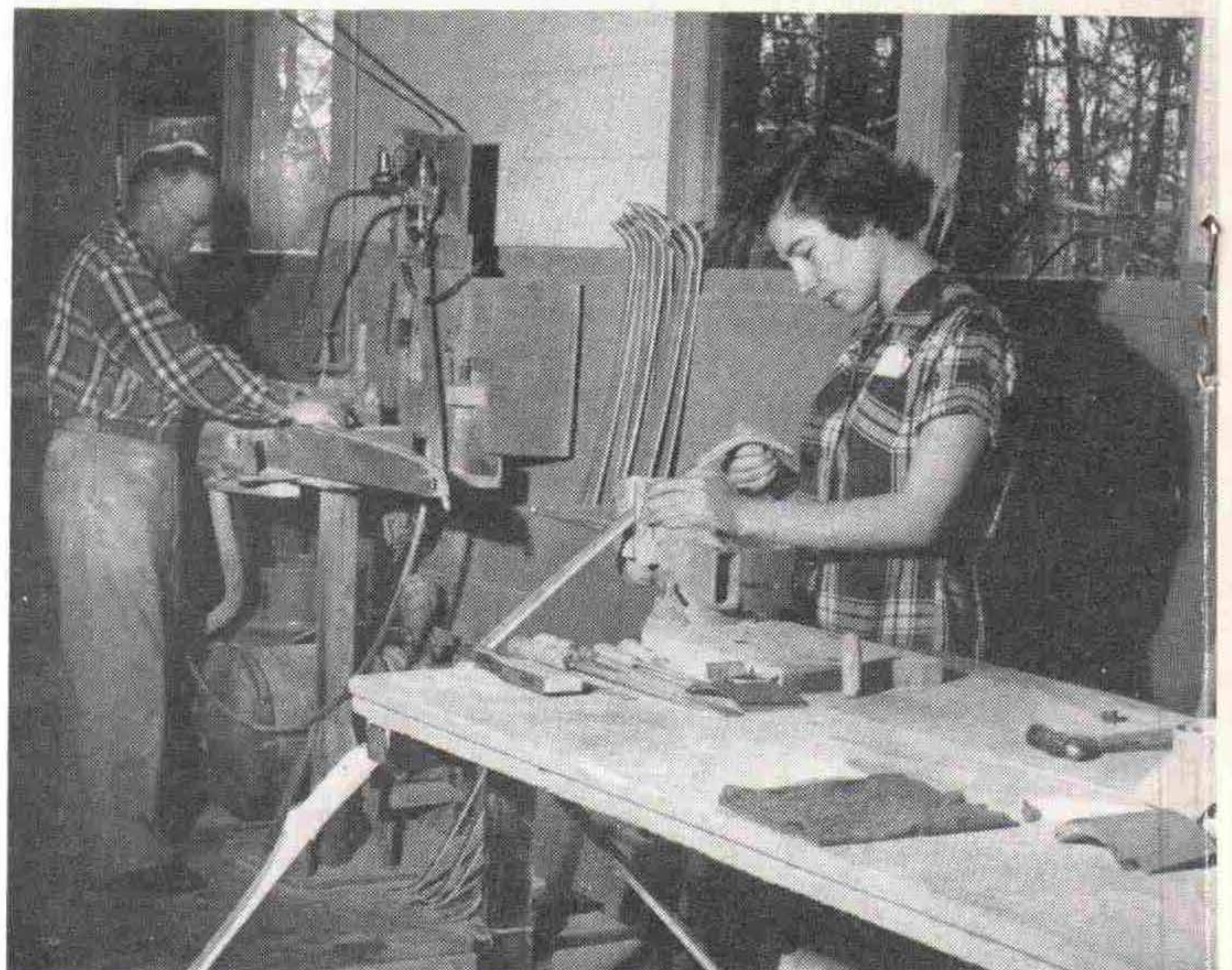
**\$29.50**



After high-frequency bonding, the bow "blank" is contour-ground to general shape on this intricate machine, another Bear creation.



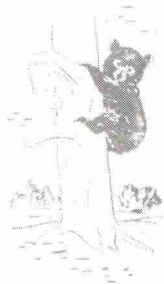
All the way through, human skill and precision machine work toward perfection. This high-speed router shapes recurve bow tips.



A woman's touch adds beauty to Bear Bow tips. Hand-sanding is typical of craftsmanship that gives distinction to Bear products.



# Bear Cub



## glass-powered action priced to please everyone

The CUB incorporates famous Bear glass-powered construction in an all-purpose, moderately priced bow. This feature alone places it far above others near its price, especially when shooting ease, cast and durability are considered.

A rugged bow that will stand up in use under extreme temperature and moisture variations, the CUB is an excellent choice for schools, clubs or public ranges, where its durability, stamina and popularity with users soon becomes apparent. Although a favorite choice of beginners, many top tournament scores have been shot with the CUB.

Length, 62". Draw Limit, 28".  
Weights, 20 to 60 lbs. only. Attractive blond finish, leather handle.  
With double loop bowstring. \$22.50.

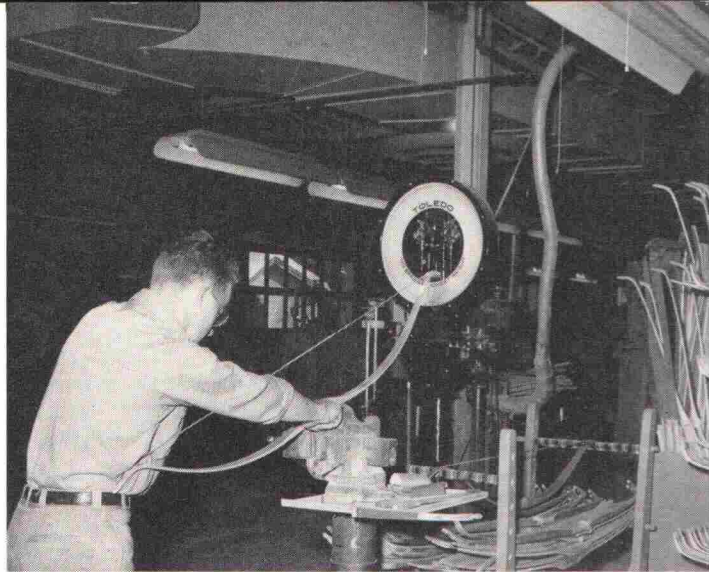
Every Bear Bow is registered and guaranteed. When ordering, specify draw length and weight, and whether you want right hand or left hand.

### When ordering any Bear Bow

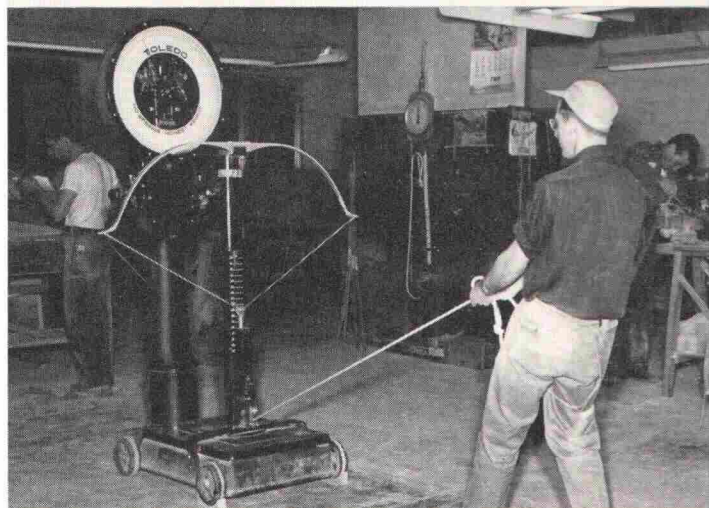
*Specify bow length, draw weight and draw length. Unless otherwise requested orders may be filled in weights within two lbs. plus or minus, to expedite delivery.*

*Unless otherwise stated all bows are weighed at 28" draw and are so marked.*

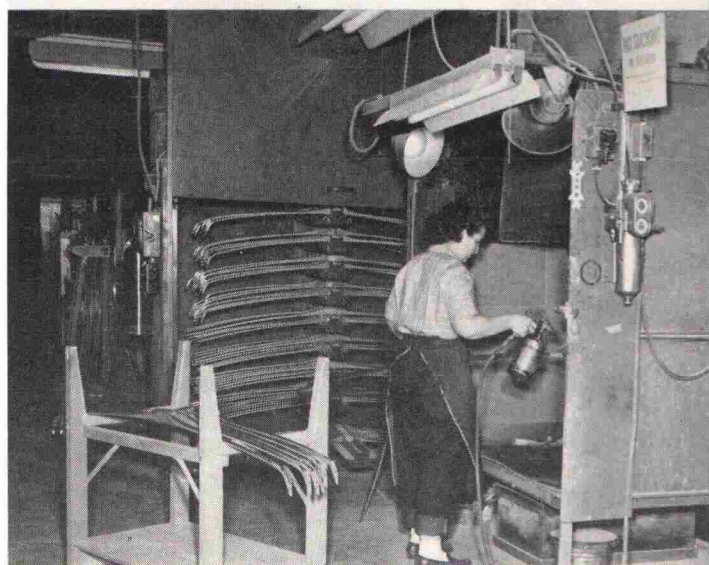
**\$22.50**



"Tillering the bow" for perfect draw, a skill centuries-old. Still done by hand, it's an exacting operation for expert bowyers.



On this new model specially-equipped scale—most accurate of its kind in the U.S.—every Bear Bow is "weighed" for draw weight.



For that characteristic Bear custom finish, admired by archers, each bow receives several hand-rubbed coats of durable varnish.



# Bear Arrows

Those who want the best in bows are satisfied with nothing less in arrows, too. With the Bear Bow owner especially in mind, we have given particular attention to development of this complete line of matched arrows. These arrows are designed, manufactured and finished with the same degree of care in materials selection and production as is employed in making Bear Bows.

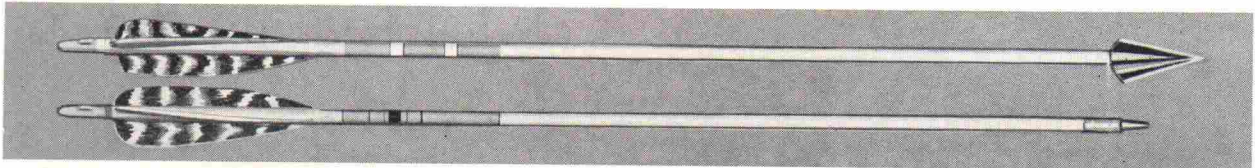
To get maximum bow performance, the arrow must be right in every respect. Its shaft must be precision-

shaped from the finest Port Orford Cedar finished in a mirror-smooth high gloss, or highest grade polished aluminum drawn expressly for the purpose. Feathers are especially important — and only the best are chosen for the true spiral fletching. This detailed care, plus accurate installation of nock and point, gives the user every arrow advantage possible toward attaining those "close-groups," time after time. And for the bowhunter, arrow quality may often spell the difference between failure and success.

When ordering arrows, specify the bow weight (30 to 40 lbs., 40 to 50 lbs., etc.) and arrow or draw length. The length of an arrow is measured from the bottom of the nock to the farthest forward part of the point, excluding the tip. Hunting arrows are

measured from a point on the shaft  $\frac{3}{4}$ " from the broadhead. For bow weights under 45 lbs. target arrows will be supplied with shorter fletching, desirable for target shooting. When ordering, be sure to give all necessary information.

## custom

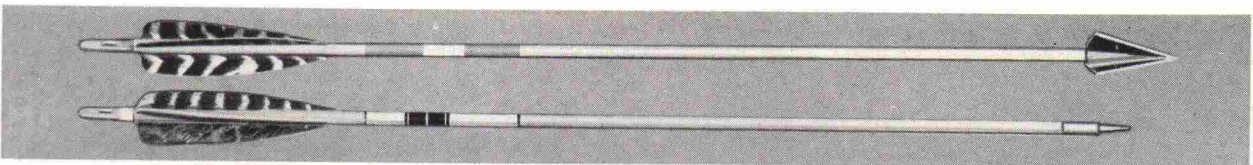


Custom-grade arrows of Port Orford Cedar, closely matched for spine and weight.  $\frac{5}{16}$ " or  $\frac{11}{32}$ " diameter, tapered to slightly smaller nock. 5" true spiral feathers: two grey barred with white or colored cock feather. Special smooth high-gloss finish.

Shaft color: Natural with 7" white band under fletching. Small, attractive crest, finely pinstriped. Lengths to 29". This arrow available in full length white, yellow, or olive drab at no extra charge.

- A-100H — with BOD-KIN or HILLS HORNET hunting heads ..... \$17.50 dozen
- A-100S — Set of 6 BOD-KINS or HILLS HORNETS and 6 field points ..... 16.00 dozen
- EXTRAS:
- Deerslayer Heads ..... Extra — \$ 1.25 dozen
- Single-blade Heads ..... Less — .50 dozen
- A-100F, B or T — with field, blunt or target points... 14.50 dozen
- Less-than-dozen lots ..... Extra — 1.00 lot
- Special crest and fletching ..... Extra — 1.00 dozen

## deluxe



The most popular all-around arrow. Matched Port Orford Cedar parallel shafts,  $\frac{5}{16}$ " or  $\frac{11}{32}$ " diameter. 5" spiral feathers: two grey-barred with colored cock feather. Smooth high-gloss finish. All shafts natural color, with 7" white band under fletching. Crested in attractive colors, finely striped. Length 26", 27", 28" and 29". Not available with special crest or fletching.

- A-200H — with BOD-KIN or HILLS HORNET hunting heads ..... \$15.50 dozen
- A-200S — Set of 6 BOD-KINS or HILLS HORNETS and 6 field points ..... 14.00 dozen
- EXTRAS:
- Deerslayer Heads ..... Extra — \$ 1.25 dozen
- Single-blade Heads ..... Less — .50 dozen
- A-200F, B or T — with field, blunt or target points... 12.50 dozen
- Less-than-dozen lots ..... Extra — 1.00 lot

## practice



An economically-priced arrow for beginners and for rough use. Parallel cedar shafts,  $\frac{5}{16}$ " or  $\frac{11}{32}$ " diameter.  $\frac{3}{2}$ " grey-barred feathers, bright color band. Length 26", 27" or 28". Not matched, and not suitable for bows over 45 lbs. Not available with hunting heads, or with special crest or fletching.

- A-300T — with target points ..... \$8.00 dozen
- A-300F — with field points ..... 8.50 dozen
- Less-than-dozen lots ..... Extra — .50 lot

## aluminum



Made of 24 SRTX aluminum alloy by Easton. Target-type points are recommended and will be shipped unless otherwise specified.

- XA-400T or F — Target or field points ..... \$27.00 dozen
- XA-400H — Broadhead points ..... 30.00 dozen



# Nocks and Points



## speed nocks

The first open-throat nock, and the most popular with both hunters and target shooters. Shaft sizes:  $\frac{1}{4}$ ",  $\frac{9}{32}$ ",  $\frac{5}{16}$ ",  $\frac{11}{32}$ ".

Colors: red, yellow, white, blue, green, black.

SN — \$0.45 dozen    \$3.00 hundred    \$25.00 thousand

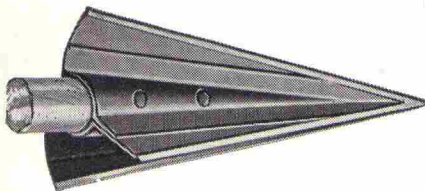
At the hundred-lot price, nocks are limited to one size and color. At the thousand-lot price, nocks are limited to five changes of size or color. Substitutions will be made if colors ordered are not available.

## arrow points

FIELD	TARGET	BLUNT
11/32 x 100F	11/32 x 45T	11/32 x 100B
To fit over 5/16" shafts		
3/8 x 125F	3/8 x 60T	3/8 x 125B
To fit over 11/32" shafts		
.90 dozen \$6.00 hundred	.75 dozen \$5.00 hundred	.75 dozen \$5.00 hundred

### STANDARD ZINC ALLOY TARGET POINTS

For 5/16" shafts — 30 grain: ZA-8 35c doz., \$2.50 hundred. (not pictured)



## bod-kin broadheads

Three-blade hunting head which features extra cutting edge and ease of sharpening.

BH-5 . . . 11/32" — 125 grains . .  
\$3.75 dozen

BH-6 . . . 5/16" — 100 grains . .  
\$3.75 dozen

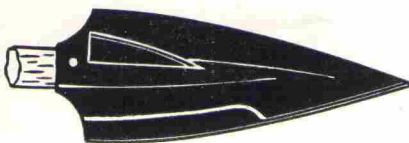


## hills hornet broadheads

Three-blade hunting head, with extra cutting edge and sharpening ease.

HH-1 . . . 11/32" — 125 grains . .  
\$3.75 dozen

HH-2 . . . 5/16" — 100 grains . .  
\$3.75 dozen

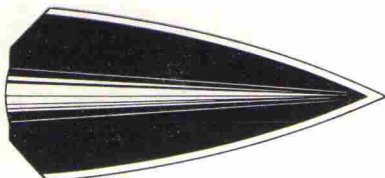


## four-blade broadheads

A four-blade broadhead with side cutters for greater effectiveness. Finest quality spring steel.

DH-3 . . . 11/32" — 125 grains . .  
\$4.95 dozen

DH-4 . . . 5/16" — 125 grains . .  
\$4.95 dozen



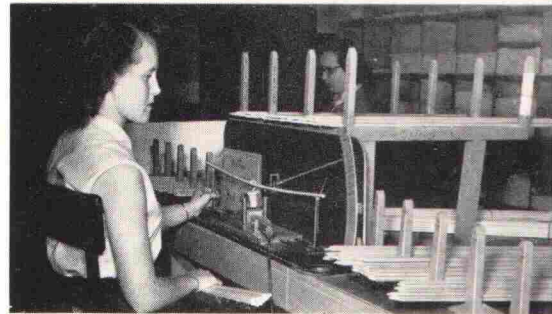
## single blade broadheads

A flat hunting head of top-grade steel.

SB-7 . . . 11/32" — 125 grains . .  
\$3.50 dozen



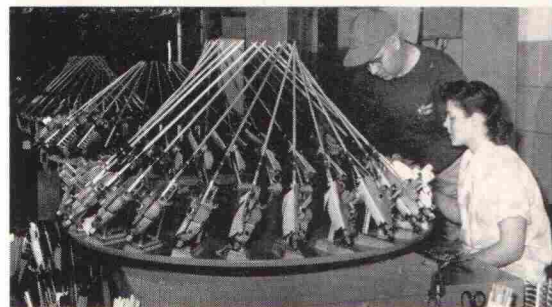
Selecting, weighing and classifying arrow shafts with aid of shadowgraph scale.



Testing arrows for spine; matching and storing. Only the finest Port Orford Cedar is used for Bear Arrows.



Crestring arrows is an art when done to Bear standards. Decorative color-stripping identifies owners' arrows.



Precision fletching pays off in the field. Feathers are attached spirally so that arrows rotate in flight.



With glowing wire, feathers are trimmed to final shape.



# Bear Quivers · Gloves



There's something about a fine saddle or a pair of custom-made boots that makes the casual observer turn for a second look—of admiration. The same applies to Archery Leather by Bear. And it is here too that the archery enthusiast can express his individuality through selection of a

hand-crafted quiver of unexcelled workmanship within any price bracket. Each design has proved best for its purpose on range, field or in the woods — truly combining the practical with the ornamental for personal satisfaction, pride of ownership and added shooting pleasure.

## alaskan

A deluxe shoulder quiver designed for 24 to 30 arrows. Full top grain cowhide in brown and tan combination, with three compartments, large zipper pocket and breast strap.

Q-100 .....\$17.75

Smaller Model:

Q-150 (Ladies' Size) .....\$15.75



## breast strap

Bear Alaskan and Western Quivers come equipped with comfortable top-grain leather breast strap.

## western

A beautifully proportioned quiver for 20 to 24 arrows, with two compartments and breast strap. Unusual zipper opening makes pocket easily accessible. Top grain leather, two-tone brown and tan.

Q-200 .....\$14.75

Smaller Model:

Q-250 (Ladies' Size) .....\$12.75



## fexan

Clean lines bring out the beauty of the fine leather in this quiver for 14 to 18 arrows. Two compartments — brown and tan combination.

Q-300 .....\$8.75

## note:

**Bear quivers, armguards and gloves are available in white leather at 10% extra.**



## blackhawk

A single compartment shoulder quiver for 10 to 12 arrows. Full top grain in brown and tan combination.

Q-400 .....\$6.75

Bearhyde Model:

Q-500 .....\$3.95

(Heavy imitation leather)

## mohican

Belt quiver holding 8 to 10 arrows; of top grain leather, including belt.

Q-600 .....\$4.75

Bearhyde Model:

Q-700 .....\$2.25

## scholar

Small Bearhyde belt quiver for 4 to 6 arrows. 19" long. Without belt.

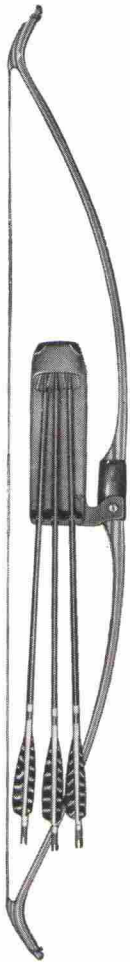
Q-800 .....\$1.25

**Specify if you want left hand quivers**



A section of the well-lighted Leather Department where skilled craftsmen produce fine quivers, gloves, tabs and armguards in a wide variety of styles and finishes. Bear leather is popular everywhere.





### northwoods

The famous hunting quiver, designed to carry nine broadhead arrows noiselessly and safely. Dull-finish, best quality brown leather, individual broadhead pockets, bristle insert to prevent arrow-rattle. Pack harness. NORTHWOODS is worn straight down the middle of the back, placing the arrow nocks just behind the neck where they will not catch on brush. The height on the back is adjustable. For exclusive hunting use in typically brushy deer areas, we strongly recommend the NORTHWOODS or the BOW QUIVER.

Q-850 ..... \$16.50  
Specify "long" (for 27"-28" arrows) or "short" (for shorter arrows).

### bow quiver

This quiver is perfect for hunting — light, quiet, convenient. Attached to the bow by means of one thumb-screw in a threaded brass bushing permanently installed in the bow-handle. The bow quiver can be removed or attached easily. Does not weaken bow — does not affect shooting accuracy. U.S. Patent No. 2,464,068.

Q-1000 ..... \$8.75

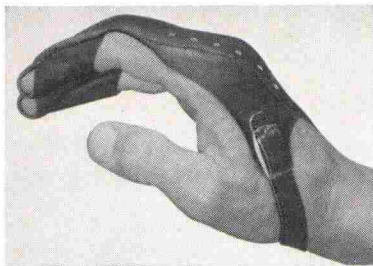


### champion

Lustrous saddle leather target quiver, with belt hook.

Q-900 ..... \$3.75

## gloves



### pro glove

Cordovan tips, closed-end style.

G-110 ..... \$2.00

### perfect glove

(not shown)

Straight back, no knuckle-pocket. Cordovan tips, open-end.

Sizes:

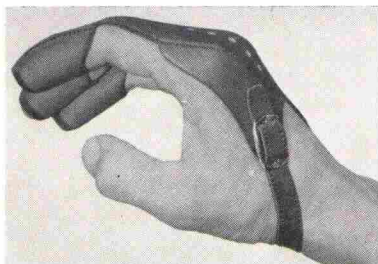
Men's Extra Large, Men's Large, Men's Medium, Men's Small, Ladies' Medium, Ladies' Small.

G-125 ..... \$1.90

### hunter glove

Cowhide tips, open-end style.

G-120 ..... \$1.65



PRO and HUNTER glove backs are brown calf-skin, in exclusive knuckle-pocket design for greater comfort . . . Specify Size: Men's Extra Large, Men's Large, Men's Medium, Men's Small, Ladies'. Specify right or left.

### hip pocket quivers



Q-925

Heavy saddle leather. DeLuxe model has a quick-action belt flap, and lip to prevent pocket wear.

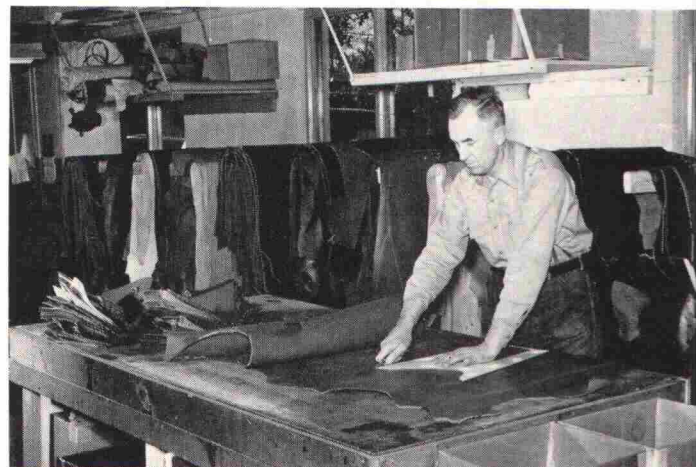
Q-925 ..... \$1.50

Q-950 (DeLuxe) .. \$2.50



Q-950

**Specify if you want left hand quivers**



For the best in leathercraft, Bear genuine leather articles are made only from select top-grain cowhide. "Bearhyde", a sturdy non-scuffing artificial leather is used for lower-priced items.



# Bear Tabs, Armguards



## kool armguard

Cordovan leather, fully lined, with concealed spring-steel stays. Brown elastic straps, quick-action hook fasteners.

W-160 .....\$1.95



## hunter armguard

Cordovan leather, fully lined, with concealed spring-steel stays. Three leather straps and buckles. Preferred by hunters.

W-170 .....\$2.95



## tabs

Cordovan. Large or small size.

T-230 ..... 35c

Cowhide. Large or small size.

T-240 ..... 20c



## marshall tab

Lined Cordovan. Large, medium or small.

T-210 ..... 75c



## western tab

Heavy Cordovan. Large or small size.

T-220 ..... 45c

## bowcase

Light weight soft cotton fabric case, with reinforced end. Bound flap with tie string. Fits all bows up to 5'6" long. A necessary protection for fine bow finishes.

C-280 .....\$1.75

## bow tape

For camouflage to hide the bright finish of bows while hunting. Dull green. Enough for one bow.

S-260 .....\$1.00

*Be sure to wax your bow before applying bow tape! Use furniture or automobile wax.*

## bow strings

Double-loop Dacron string, fully served. Specify bow draw weight and bow length: 56"-58"-60"-62"-64"-66"-68". Order strings by the length of the bow. This is the distance between the bow nocks. Strings are about 3 inches shorter than the bow.

M-100 .....\$1.50 ea.

## bowyers wax

2-ounce cake. The right wax for bow strings.

M-200 ..... 35c ea.

## matched shafts

Port Orford Cedar Arrow Shafts, carefully matched for weight and spine. 5/16" diameter or 11/32". Specify bow weight. 5/16" shafts are not suitable for use with bows heavier than 45 lbs.

M-300 (parallel) .....\$2.50 doz.

M-300T (tapered) .....\$3.00 doz.

## feathers

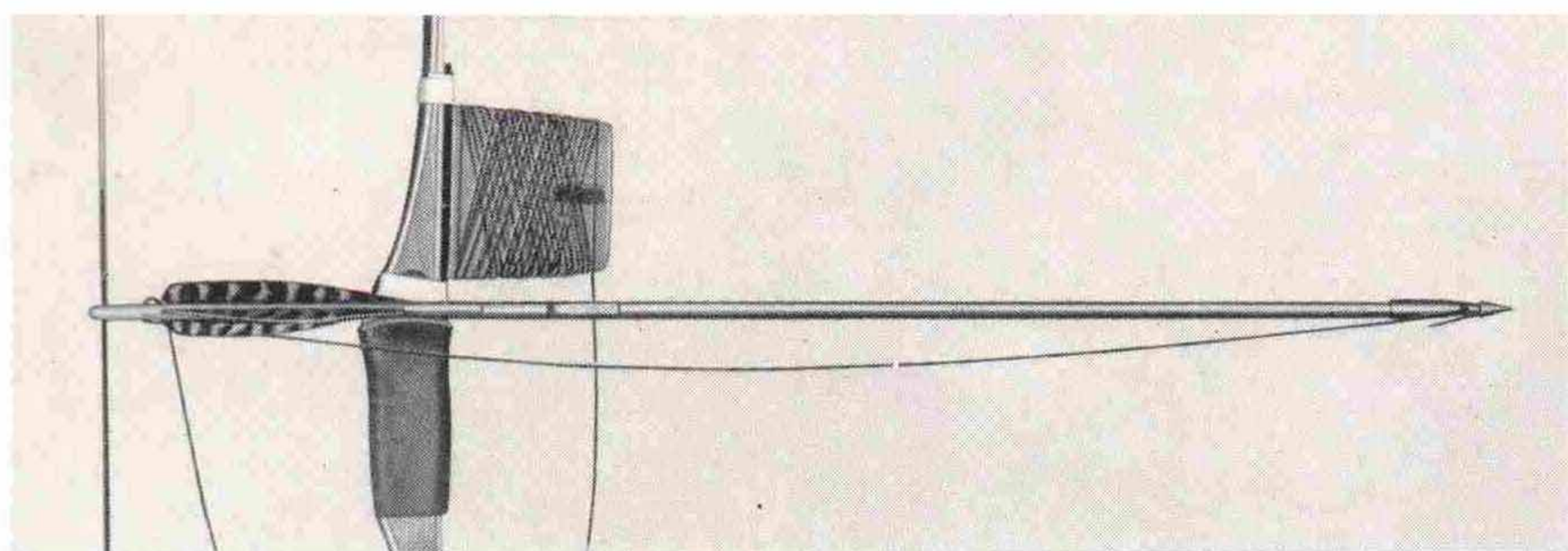
Full-length ground-base turkey pointers.

Grey Barred — M-400B .....\$ .80 doz.

White — M-400W ..... 1.20 doz.

Clear (red, orange, or yellow) — M-400C ..... 1.30 doz.

Dyed Barred (red, orange, or yellow) — M-400D ..... .90 doz.



## fishing outfit

Bowfishing is archery's newest sport. Shooting carp, suckers, gar and other rough fish is fun with this popular outfit. Consists of a tapered flat reel and 50 feet of line with a metal bracket to tape it to the bow and a solid Fiberglas arrow with a harpoon head.

Complete with instructions.  
(excluding bow) FO-10 \$7.50  
Reel and line only R-10 3.95  
Arrow only,  
less head . . . .A-20 2.85  
Head only . . . . H-25 .85



## archery films

Now available for rental to clubs or groups — several excellent new archery films in sound and full color. Action-filled, unstaged, entertaining. Viewing time, approximately 20 minutes each. Send for descriptive circular and prices. Write:

GRAYLING FILM SERVICE  
Grayling, Michigan



# and Accessories

## fletching cement

2-ounce tube. The right cement for the feathers and nocks.  
M-500 ..... 25c ea.

## ferrule cement

Stick cement for Broadheads, applied with heat.  
M-600 ..... 25c ea.

## urac 185 adhesive

Handy Pack — U-185, quarter-pint. .... 80c ea.

## bear glass facing and backing

This is the parallel glass facing and backing that we use in our bows. It includes all features covered by our patents, nos. 2,213, 660 and 2,665,678. Both the facing and backing are supplied with a very thin strip of hard maple bonded to the one side so that bow assembly can be made with any wood-to-wood glue.

Facing .060 thick — 1½" wide x 66" long ..... \$6.40  
1¾" wide x 68" long ..... 7.40  
Backing .045 thick — 1½" wide x 66" long ..... \$5.90  
1¾" wide x 68" long ..... 6.90

## straw targets

Best quality machine-wound butts, of wild marsh grass.  
ST48 — 48" diameter ..... \$13.25 ea.  
ST36 — 36" diameter ..... 8.50 ea.  
ST24 — 24" diameter ..... 5.50 ea.  
ST16 — 16" diameter ..... 2.75 ea.  
Straw targets are shipped F.O.B. Columbus, Nebraska. Prices sometimes higher, depending on location, because of freight costs.

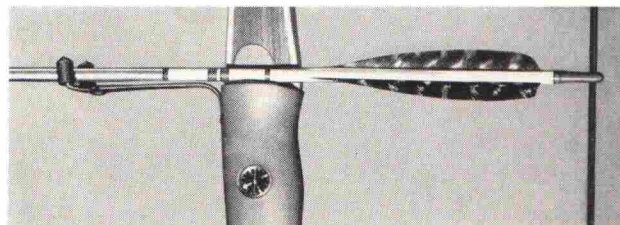
## paper target faces

Heavy water-repellent paper, accurately printed in 4 colors.  
P48 — 48" ..... \$.90 P24 — 24" ..... \$.40  
P36 — 36" ..... .60 P16 — 16" ..... .15  
Paper faces, cut around, with cloth skirt and drawstring.  
P48S — 48" ..... \$2.25 P24S — 24" ..... \$1.20  
P36S — 36" ..... 1.80

## field faces

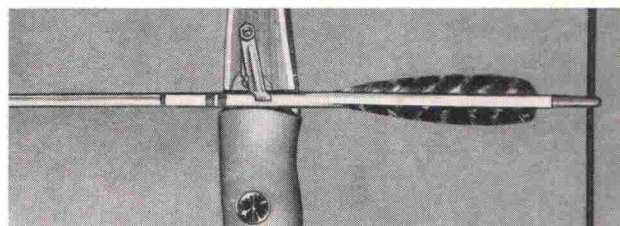
Paper field target faces with animal figures and circles. Available only in sets of 14 with extras of the smaller sizes.  
F-14 ..... \$4.45 per set

## arrow holders



### nelson arrow holder

(Can be used right or left hand) ..... \$2.00 each



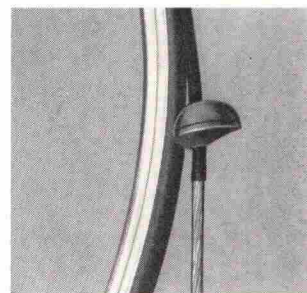
### brooks arrow lock

(Specify right or left hand) ..... \$2.00 each

No more need to freeze the bow hand, holding arrow in place. One of these Arrow Holders will do the work, yet release arrows instantly, silently. No drag or jerk as you draw. On or off bow in a jiffy. Hold any size arrow. The hunter is always ready for a shot, even in coldest weather.

## brush buttons

This little soft rubber accessory is a big help when hunting in brush. A pair of Brush Buttons will brushproof your bow — dampen string noise, too. Easily strung over bowstring — does not interfere with bracing nor impair accuracy — saves bowstring and temper. 50c pair



## new book by Fred Bear

### "Fun With Bow and Arrow"



24 pages on how to select equipment — shoot straight — hunt — fish... A valuable help *Beginners need this book* — veterans will enjoy it, too.  
per copy 25c

## archery magazines

Archery Magazine  
Box H, Palm Springs, Calif.

The Bowhunter  
28 E. Jackson St., Hartford, Wis.

The Archers' Magazine  
1200 Walnut St., Philadelphia 7, Pa.

## how to order

Prices are F.O.B. Grayling, Michigan, unless otherwise stated, and are subject to change without notice. Unless satisfactory credit references are furnished, material will be shipped C.O.D. Minimum order \$1.00. All articles can be supplied for lefthanded shooters — be sure to specify this.

If you send check with order, please allow for insured parcel post charges and sales tax where applicable. Use Bear order blank when possible.

**beginners:** your dealer will be glad to help you select the proper equipment. Tell him your height, weight, age and whether you want the tackle for hunting, target shooting or both. If no dealer is nearby, write us.



Bear orders are filled with all possible speed and care. To avoid unnecessary delays, please check over your order with care before mailing.



This beautiful 900 pound bull elk was downed by Fred Bear in Wyoming during the Fall of 1952, using archery equipment bearing his name — proof of the extreme accuracy and tremendous hitting power of the modern BEAR BOW . . .



## Guarantee

Every BEAR Bow is numbered and accompanied by a registration card which must be filled out and mailed by the purchaser within ten days after date of purchase.

Should failure occur in a bow so registered within a period of two months after date of purchase, the Bear Archery Company will make free repair or replacement unless the bow shows evidence of misuse or improper handling. After this sixty day period and provided the bow has not been abused or mishandled, replacement will be made on an exchange basis whereby the owner will pay for the use he has had from the bow at the rate of 10% per month based on the purchase price.

Dealers are not authorized to make replacements or adjustments.

## every bear bow is registered and guaranteed

For years archery has been the vocation and the hobby of our designers and craftsmen. Choice of materials and many of the design features for Bear Bows were determined after countless hours spent on range and field, at tournaments and in bowhunting. The benefits of this practical experience, augmented by that of our many customers, are offered you through this catalog.

*Fred Bear*

Fred Bear  
President



THE COMPLETE LINE — Bows . . . Arrows . . . Leather

# BEAR ARCHERY COMPANY

Route One, Grayling, Michigan

### IMPORTANT

Restrictions on size and weight of parcel post packages do not apply on shipments to or from our R.F.D. address at Grayling.