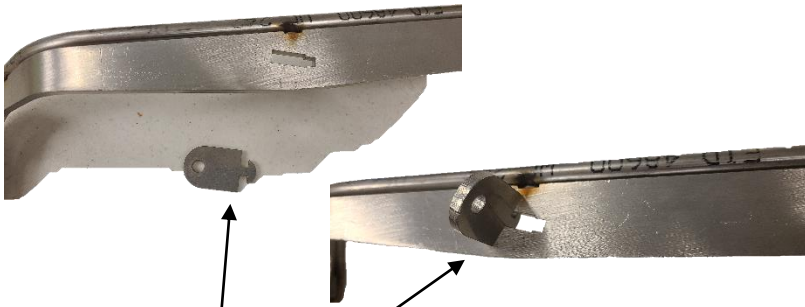


# PICTURE LAYOUT FOR KINZE N-SITE TUBES



STEP 1  
Insert rear mounting key into the bar for both sides.



STEP 2  
Insert 3/8" bolt and washer through pre drilled hole. Install the lock nut. Leave the bolt loose until step 3 is complete.



STEP 3  
Line up the rear tabs and center punch the hole to drill for the 1/4" bolt.  
(IF A CLAMP CAN BE SECURED TIGHTLY YOU CAN USE THE TABS AS A DRILL GUIDE. BE SURE THE BIT DOESN'T DRIFT WHILE DRILLING). Insert the bolt, lock washer and nut. Just get it snug.



STEP 4  
Push the 1/4" line through to desired drop depth out the rear of the tube. Install provided "VENT" tubes on the exit of the tube.

**\*CONSULT YOUR AGRONOMIST FOR PROPER PRODUCT USE, RATES, AND APPLICATION SPACING. GOOD COMMUNICATION WILL INSURE THE BEST OUTCOME AND SUCCESS FOR FERTILIZER TUBE USE.**

**\*R.E. SKILLINGS SUPPLIES INC IS NOT LIABLE FOR ANY DAMAGE OR HARM TO CROPS OR EQUIPMENT FROM THE USE OF THE N-SITE TUBE AND ASSOCIATED EQUIPMENT.**

**THANK YOU FOR CHOOSING THE N-SITE TUBE FOR YOUR FERTILIZER PLACEMENT!**