

# Robertshaw Thermocouple Replacement Procedure

In production as of May 2017

1. Replace the brass fitting.



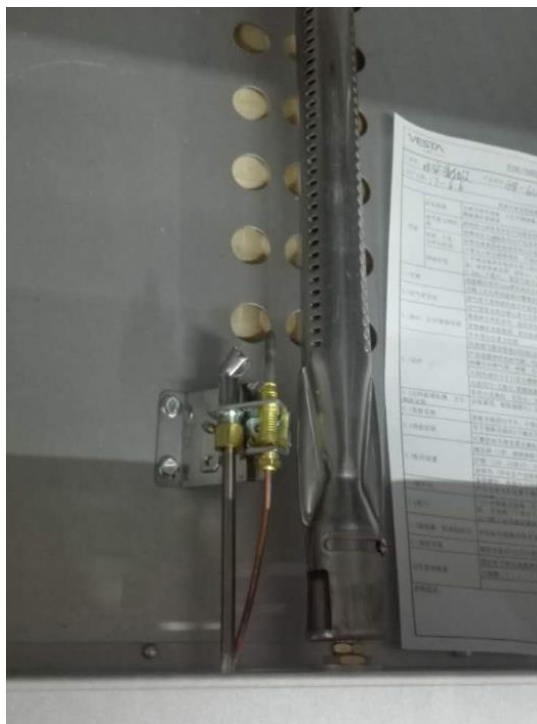
Remove this brass fitting on SABF valve and replace it with the brass fitting for Robertshaw thermocouple (Part # GR10020-1 - thermocouple fitting, brass; screw thread: 11/32-32 & M15x1.

2. Install the Robertshaw thermocouple.



Install the Robertshaw thermocouple to the same position, Part # GR10075-2 (from Serial Date Code 1705)

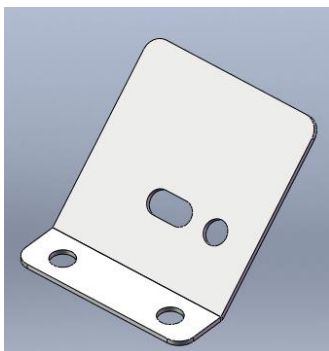
3. Replace the pilot. Install this pilot with the new pilot mounting bracket. (shown below)



Part number for oven pilot assembly (Robertshaw):  
GR10075-3 (LPG); GR10075-4 (NG).



This is the new pilot mounting bracket, (Part # GR10075-5).



Install the pilot to the pilot mounting bracket, then install the assembly to the oven air plate, using the original mounting holes.

2. Install the pilot mounting bracket (w/pilot) to the original and same position as previous pilot assembly, then have the thermocouple installed.

