

Marble Arms® Front Sight
Part Numbers
Gun Sight Specifications
Installation & Maintenance Instructions



Marble Arms® Front Sight Chart

Sight Height	Sight Width	Description	Color	1/16" Bead Mfg#	3/32" Bead Mfg#
.260"	.340"	26MR (Ramp Style)	Gold	502621	602621
.260"	.340"	26MR (Ramp Style)	Ivory	502622	602622
.290"	.340"	29MR (Ramp Style)	Gold	502921	602921
.290"	.340"	29MR (Ramp Style)	Ivory	502922	602922
.312"	.340"	31MR (Ramp Style)	Gold	503121	603121
.312"	.340"	31MR (Ramp Style)	Ivory	503122	603122
.312"	.531"	31W	Gold	103131	603131
.312"	.531"	31W	Ivory	103132	203132
.343"	.340"	34MR (Ramp Style)	Gold	503421	603421
.343"	.340"	34MR (Ramp Style)	Ivory	503422	603422
.343"	.531"	34W	Gold	103431	203431
.343"	.531"	34W	Ivory	103432	203432
.375"	.340"	37MR (Ramp Style)	Gold	503721	603721
.375"	.340"	37MR (Ramp Style)	Ivory	503722	603722
.375"	.531"	37W	Gold	103731	203731
.375"	.531"	37W	Ivory	103732	203732
.410"	.340"	41MR (Ramp Style)	Gold	504121	604121
.410"	.340"	41MR (Ramp Style)	Ivory	504122	604122
.410"	.531"	41W	Gold	104131	204131
.410"	.531"	41W	Ivory	104132	204132
.450"	.340"	45MR (Ramp Style)	Gold	504521	604521
.450"	.340"	45MR (Ramp Style)	Ivory	504522	604522
.450"	.531"	45W	Gold	104531	204531
.450"	.531"	45W	Ivory	104532	204532
.500"	.340"	50MR (Ramp Style)	Gold	505021	605021
.500"	.340"	50MR (Ramp Style)	Ivory	505022	605022
.500"	.531"	50W	Gold	105031	205031
.500"	.531"	50W	Ivory	105032	205032
.530"	.340"	53MR (Ramp Style)	Gold	505321	605321
.530"	.340"	53MR (Ramp Style)	Ivory	505322	605322
.530"	.531"	53W	Gold	105331	205331
.530"	.531"	53W	Ivory	105332	205332
.570"	.531"	57W	Gold	105731	205731
.570"	.531"	57W	Ivory	105732	205732

*Height measured from top of bead to bottom of Dovetail.



Marble Arms® Front Sight Chart/ Fiber Optic 3/32" Bead

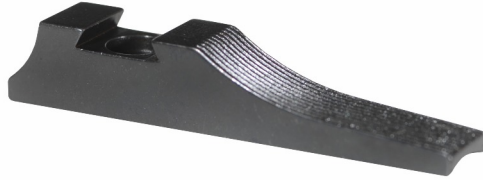
Sight Height	Width	Description	Fiber Optic Color	Mfg#
.312"	.340"	31MR (Ramp Style)	F/O Orange	603125
.312"	.340"	31MR (Ramp Style)	F/O Green	603126
.312"	.531"	31W	F/O Orange	203135
.312"	.531"	31W	F/O Green	203136
.343"	.340"	34MR (Ramp Style)	F/O Orange	603425
.343"	.340"	34 MR (Ramp Style)	F/O Green	603426
.343"	.531"	34W	F/O Orange	203435
.343"	.531"	34W	F/O Green	203436
.375"	.340"	37MR (Ramp Style)	F/O Orange	603725
.375"	.340"	37MR (Ramp Style)	F/O Green	603726
.375"	.531"	37W	F/O Orange	203735
.375"	.531"	37W	F/O Green	203736
.410"	.340"	41MR (Ramp Style)	F/O Orange	604125
.410"	.340"	41MR (Ramp Style)	F/O Green	604126
.410"	.531"	41W	F/O Orange	204135
.410"	.531"	41W	F/O Green	204136
.450"	.340"	45MR (Ramp Style)	F/O Orange	604525
.450"	.340"	45MR (Ramp Style)	F/O Green	604526
.450"	.531"	45W	F/O Orange	204535
.450"	.531"	45W	F/O Green	204536
.500"	.340"	50MR (Ramp Style)	F/O Orange	605025
.500"	.340"	50MR (Ramp Style)	F/O Green	605026
.500"	.531"	50W	F/O Orange	205035
.500"	.531"	50W	F/O Green	205036
.530"	.340"	53MR (Ramp Style)	F/O Orange	605325
.530"	.340"	53MR (Ramp Style)	F/O Green	605326
.530"	.531"	53W	F/O Orange	205325
.530"	.531"	53W	F/O Green	205326
.570"	.531"	57MR (Ramp Style)	F/O Orange	205725
.570"	.531"	57MR (Ramp Style)	F/O Green	205726

*Height measured from top of bead to bottom of Dovetail.



Marble Arms® Front Sight Ramp With Dovetail Slot

Barrel Diameter	Sight Height	Mfg#	Barrel Diameter	Sight Height	Mfg#
0.625	.100"	72310	.625"	0.225	72330
0.6875	.100"	72311	.6875"	.225"	72331
0.875	.100"	72312	0.875	.225"	72332
Flat	.100"	72313	Flat	.225"	72333



Ruger® Style Pistol Fiber Optic Front Sights

Fiber Optic Model	Sight Height	Green Mfg#	Orange Mfg#
Super Redhawk .44 Mag., GP-100	.332"	101003	101002
Super Redhawk .454 Casull	.310"	101005	101004
Super Redhawk .480 Ruger	.390"	101007	101006

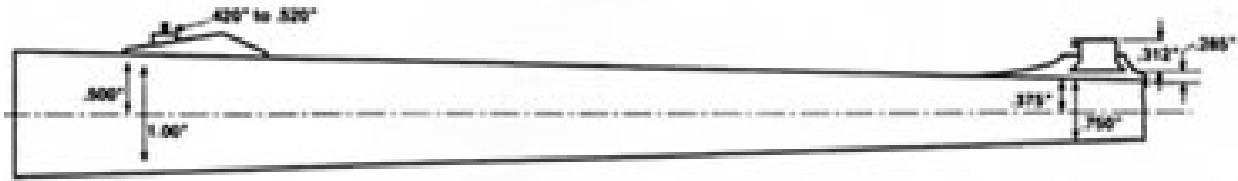


Marble Arms® Fiber Optic Uni-Ramp Front Sights

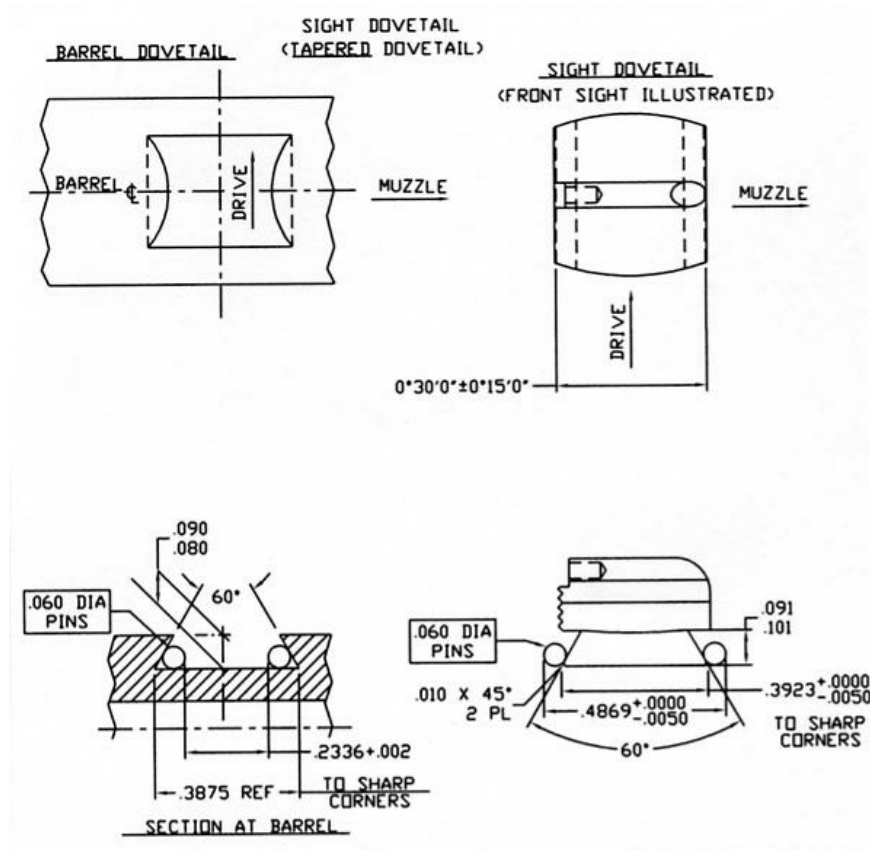
Barrel Diameter	Sight Height	F/O Orange Mfg#	F/O Green Mfg#
.625"	.405"	72400	72401
.625"	.470"	72402	72403
.750"	.405"	72404	72405
.750"	.470"	72406	72407
.875"	.405"	72408	72409
.875"	.470"	72410	72411



Calculating Rear & Front Sight Height Combination



1. Measure the diameter of the barrel at the point of the rear sight is going to be installed and at the point of the front sight going to be installed (example: 1.0" rear sight and .750" front sight).
2. Divide the diameters by 2 (example: $1.0'' / 2 = .500''$ and $.750'' / 2 = .375''$).
3. Check the rear sight height adjustment chart. You want to be about 1/3 up from bottom adjustment. using a sporting rear #67 adjusts from .300" to .510". Total adjustments is .210". Divide $.210'' / 3 = .070''$. Add the .070" to the lowest adjustment height (which is .300") and you come up with .370". This is 1/3 up from bottom adjustment.
4. Add the 1/3 adjustment to the center line distance (example: $.370'' + .500'' = .870''$).
5. Subtract the front sight center line figure from the rear sight height (example: $.370'' + .500'' = .870''$).
6. You need a combination of front ramp and front sight with the height of .495". Ramps are measured from the base to the bottom of the dovetails. Front sights are measured from the bottom of the dovetail to the top of the bead.
7. Or you could go with a front sight height of .588". .495" (height need from top of barrel to top of sight) + .093" (which is the depth of the dovetail cut in barrel).



Distance Between Front & Rear Sights

Amount of Adjustment Necessary to Correct

	14"	15"	16"	17"	18"	19"	20"	21"	22"	23"
*1"	0.0038	0.0041	0.0044	0.0047	0.005	0.0053	0.0055	0.0058	0.0061	0.0064
*2"	0.0078	0.0083	0.0089	0.0094	0.01	0.0105	0.0111	0.0116	0.0122	0.0127
*3"	0.0117	0.0125	0.0133	0.0142	0.015	0.0159	0.0167	0.0175	0.0184	0.0192
*4"	0.0155	0.0167	0.0178	0.0189	0.02	0.0211	0.0222	0.0234	0.0244	0.0255
*5"	0.0194	0.0208	0.0222	0.0236	0.025	0.0264	0.0278	0.0292	0.0306	0.0319
*6"	0.0233	0.025	0.0267	0.0283	0.03	0.0317	0.0333	0.035	0.0367	0.0384

	24"	25"	26"	27"	28"	29"	30"	31"	32"	33"	34"
*1"	0.0066	0.0069	0.0072	0.0074	0.0077	0.008	0.0082	0.0085	0.0088	0.0091	0.0093
*2"	0.0133	0.0138	0.0144	0.0149	0.0155	0.016	0.0156	0.0171	0.0177	0.0182	0.0188
*3"	0.0201	0.0209	0.0217	0.0226	0.0234	0.0243	0.0251	0.0259	0.0268	0.0276	0.0285
*4"	0.0266	0.0278	0.0289	0.03	0.0311	0.0322	0.0333	0.0344	0.0355	0.0366	0.0377
*5"	0.0333	0.0347	0.0361	0.0375	0.0389	0.0403	0.0417	0.0431	0.0445	0.0458	0.0472
*6"	0.04	0.0417	0.0434	0.045	0.0467	0.0484	0.05	0.0517	0.0534	0.0551	0.0567

How to Use Table Above-Suppose a rifle, having a sighting radius of 24" between front sight and receiver sight, shoots 6" high at 100 yards, even with the rear sight adjusted as low as possible. Remove front sight and measure overall height, preferable with a micrometer. This might be .410", such as a Marble No. 41MR. Reference to columns for 24" and 6" on table above will show a necessary correction of .040". This would mean a new, higher front sight (with an overall height of .410" plus .040" for a correction height of .450") such as a Marble No. 45MR, should be installed.

Sighting in should be done with a bench rest or prone with a sand bag or other rest for the rifle. Do not put rifle barrel or forearm directly on solid surface, but put the back of your hand or wrist on the rest and hold forearm of the rifle securely in your hand with approximately the same tightness of grip you would use when shooting at running game. If the firearm or barrel is rested directly on the sand bag or rest, the rifle will shoot higher than when held firmly while shooting at game as more "muzzle flip" will occur.