

Disaster Remediation

Complete Clean in Less Time = More Profit



A Faster, Better Clean.

When disaster strikes, the demand for immediate clean-up follows. Whether fire, smoke, water or mold damage, traditional cleaning methods are time consuming and tedious, not to mention ineffective for complete removal. Dry ice blasting is up to three times faster than traditional methods and provides a more thorough clean, even in tight angles of trusses and around nails and wiring. In addition, dry ice blasting achieves 99% mold spore removal from wood.

APPLICATIONS

- Fire and Smoke Restoration
- Mold Remediation
- Odor Elimination
- Water Damage

KEY BENEFITS

- Reduce cleaning time
- Reduce labor requirements
- No secondary waste
- Chemical-free process
- 99% mold spore removal on wood when IAQA standards followed
- Remove odor from fire damage
- Environmentally responsible

Discover Dry Ice Cleaning

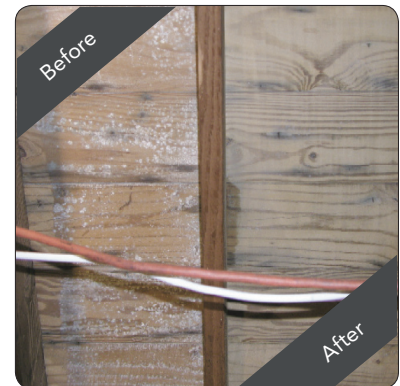
Visit www.dryicecleaning.com for more information and case studies

Dry Ice Blasting vs traditional cleaning methods.

CLEANING METHOD	NO SECONDARY WASTE	NON-CONDUCTIVE	NON-TOXIC*	NON-ABRASIVE
Dry Ice Blasting	●	●	●	●
Sand Blasting		●	●*	
Soda Blasting		●	●*	
Water Blasting			●*	●
Hand Tools	●		●	
Solvents/Chemicals				●

* Upon contact, traditional blasting materials become contaminated when used to clean hazardous substances and objects. These blasting materials are then classified as toxic waste and require appropriate safe disposal.

MOLD REMEDIATION



FIRE RESTORATION

