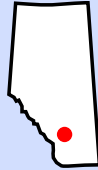


The Pint Public House -1428 17 Ave SW

Stats:

LOCATION:

Calgary, AB



CLIENT:

Stella Leong

COMMUNITY:

Beltline

PROJECT TIMELINE

2008 2009 2010 2012 2013



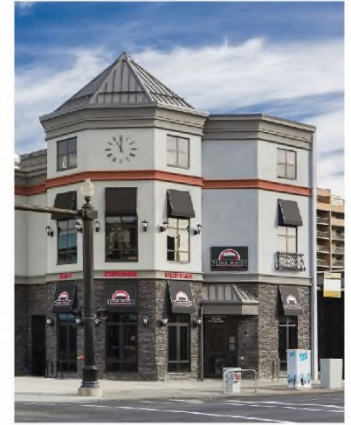
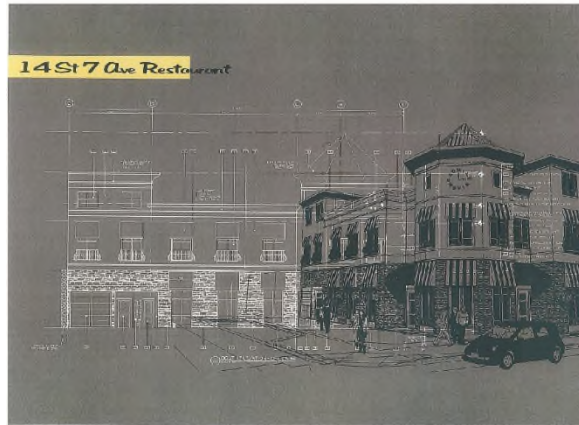
LAND USE:

Commercial Entertainment
(Pub/Restaurant)

OUR ROLE:

Architectural design coordination
Conceptual Scheme Amendment
Land Use Re-designation

PROJECT TYPE: Residential



PROJECT DESCRIPTION:

This project was for a Development Permit for a new retail building at 1428 17 Ave SW. This site is a pre-dominant location at the northeast corner of major vehicular and pedestrian corridors of 14th Street and 17th Avenue SW. This project compliments the surrounding area through circulated massing and a prominent clock tower located on the southwest corner.

Planning included facilitation and negotiation with the City of Calgary to request relaxation of parking requirements and the setback policy to make the site aesthetically pleasing and economically viable. The development opened its doors to customers in 2013.

SERVICES PROVIDED:

- Concept Scheme Amendment
- Land-Use Re-designation
- Development Permit
- Negotiation with City to address setback improvements for vehicular and pedestrian accessibility
- Negotiation with City to address parking relaxation