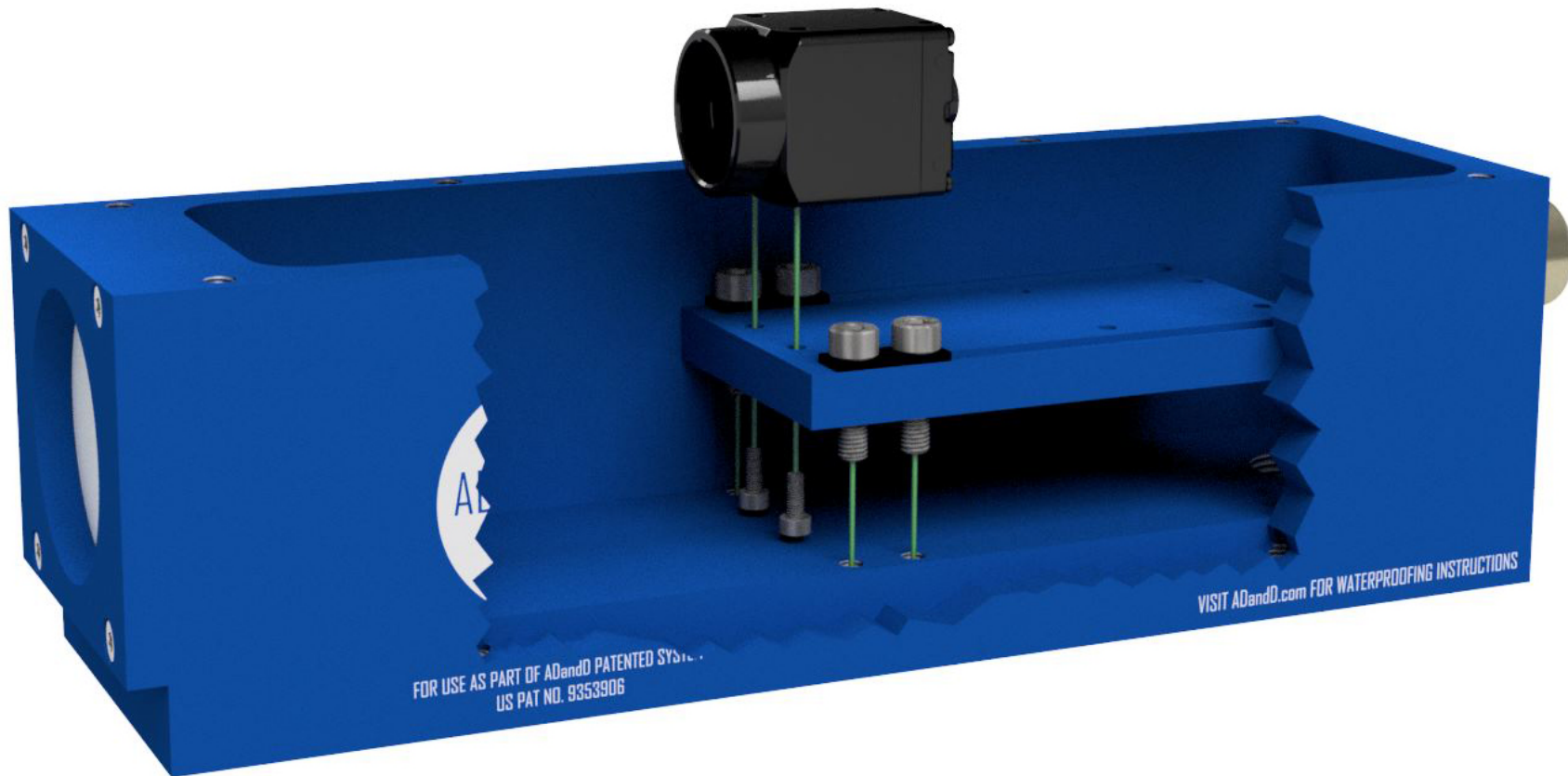
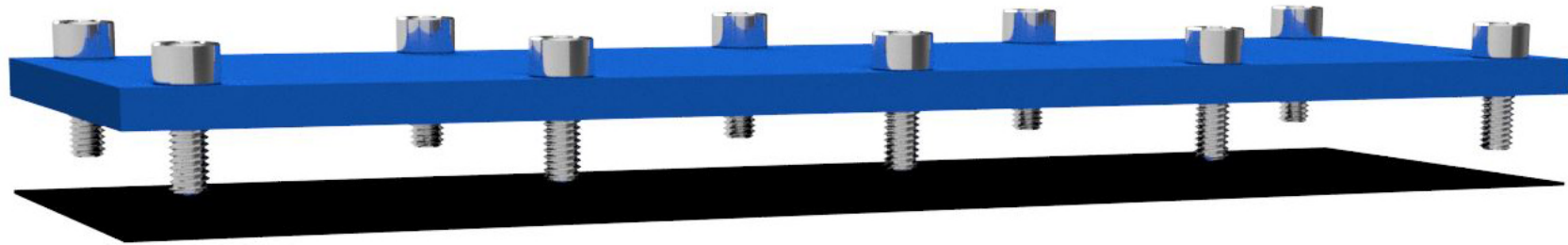


# ADandD P/N CEPL-1

Mounting for Keyence XG-H500 C/M Camera

Mounts with included hardware: Slide Plate A, Spacer Plate (not required) and (2) S.H.C.S. - M3-D.5mm X 8mm 18-8SS

Maximum Lens Size: 2.25" Dia X 3.00"



# Sample Setup Application

