

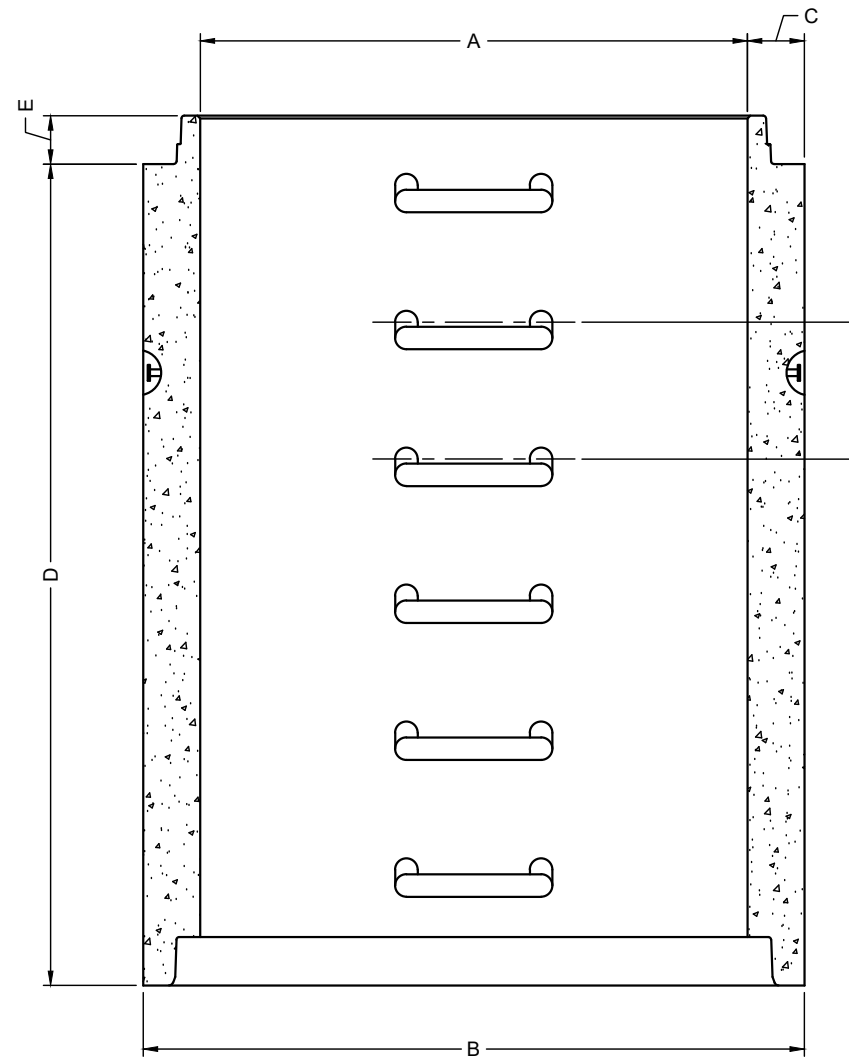
A ID	B OD	C THK.	D HEIGHT	E JOINT HT.	F SPACING
1219	1473	127	305	108	305
1219	1473	127	457	108	305
1219	1473	127	610	108	305
1219	1473	127	914	108	305
1219	1473	127	1219	108	305
1219	1473	127	1829	108	305

AVAILABLE HEIGHTS	QTY. OF RUNGS	STARCON LIFTING PINS	WEIGHTS [kg]
0.31m [1']	1	4T	373
0.46m [1.5']	2	4T	555
0.61m [2']	2	4T	744
0.91m [3']	3	4T	1120
1.22m [4']	4	4T	1497
1.83m [6']	6	4T	2251

CONCRETE	RELEASE	MPa	20
	28 DAY:	MPa	35
	AIR CONTENT:	6% ± 1%	
	WEIGHT:	kg	VOLUME
STRAND	TYPE:	kg/m ² 2402	
		mm	
		MPa	
MARK	DESCRIPTION	QTY.	



ISOMETRIC VIEW
NTS



ELEVATION VIEW



NOTES:

- 1) CEMENT : PORTLAND CEMENT TYPE 50(HS)
- 2) Max AGGREGATE SIZE: 20mm
- 3) 28 DAY STRENGTH: MIN. 35 MPa.
- 4) ENTRAINED AIR: 6%±1%
- 5) REINFORCING TO CAN/CSA-G30.18 400 MPa
- 6) ALL UNITS ARE IN MILLIMETERS UNLESS OTHERWISE NOTED.

DWG. NO.	REFERENCE	NO.:	REVISION DESCRIPTION	BY	APP'D	DATE	DRW BY	SWM	2018/11/21
-	-	A	ISSUED PLAN	-	-	2018/11/21	CH'K BY	-	-
-	-	-	-	-	-	-	AP'D BY	-	-
-	-	-	-	-	-	-	AP'D BY	-	-
-	-	-	-	-	-	-	AP'D BY	-	-
-	-	-	-	-	-	-	SCALE: NTS	PAGE: 1 OF 1	

TITLE:	1200 RISER DETAIL DRAWING	
PROJECT NO.:	JOB NO.:	
DRAWING NO.:	SVI-MR-1200-01A	