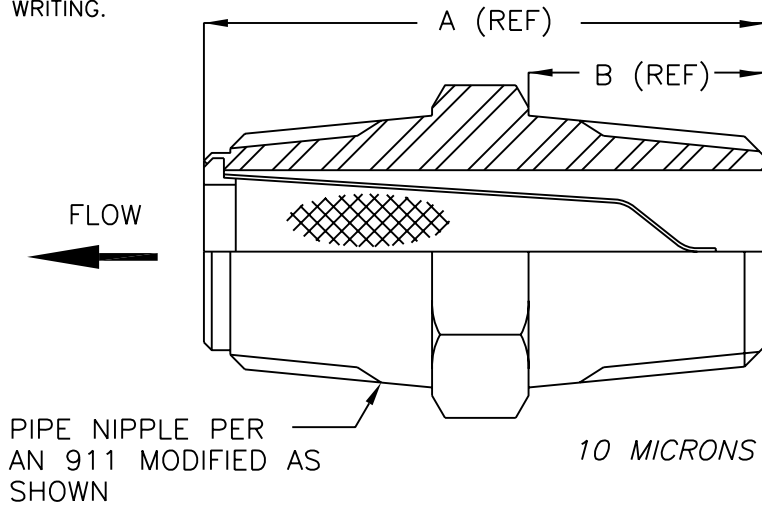


CLICK TO CONTACT US

THIS DOCUMENT CONTAINS INFORMATION PROPRIETARY TO GENESIS FILTRATION CORPORATION. ANY REPRODUCTION, DISCLOSURE, OR USE OF THIS DOCUMENT IN WHOLE OR IN PART IS EXPRESSLY PROHIBITED EXCEPT AS GENESIS FILTRATION CORPORATION MAY OTHERWISE AGREE TO IN WRITING.

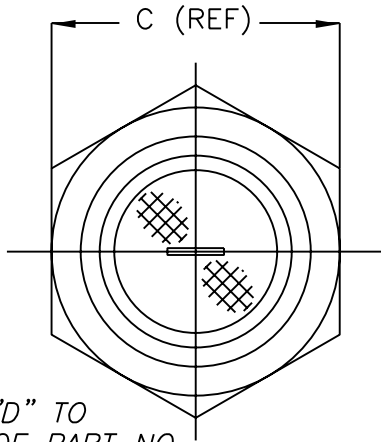
REVISIONS			
LTR	DESCRIPTION	DATE	APPROVED



EXAMPLE PART NO.
30467-6-10

-6 SIZE
10 MICRONS NOMINAL

ADD "D" TO
END OF PART NO
FOR ALUM FITTING OPT.



NOM MIC RATING
-2
-5
-10
-20
-40
-70
-105

- CONSTRUCTION: FILTER ELEMENT IS RESISTANCE WELDED AND SPIN SWAGED INTO FITTING.
- MATERIALS:
FILTER ELEMENT: 300 SER. CRES.
HOUSING: AVAILABLE IN STAINLESS STEEL OR ALUM ALLOY, ANODIZED.
- FILTER MEDIA; STAINLESS STEEL WOVEN WIRE MESH.

- ② SECOND DASH NUMBER SPECIFIES NOMINAL MICRON RATING.
① FIRST DASH NUMBER SPECIFIES SIZE.

ADDITIONAL SIZES AND OPTIONS AVAILABLE.

-① DASH NO	THD NPT SIZE	A (REF)	B (REF)	C (REF)
-3	3/8	1 15/32	19/32	.750
-4	1/2	1 27/32	49/64	.938
-6	3/4	1 29/32	25/32	1.125
-8	1	2 5/16	31/32	1.375
-10	1 1/4	2 11/32	63/64	1.750

UNLESS OTHERWISE SPECIFIED		DO NOT SCALE THIS DWG. INTERPRET DWG PER IAW DOD-STD-1000 DIMS & TOLS. PER ANSI Y14.5		DFT BY:		Genesis Filtration Inc. 9757 7th STREET, UNIT 804 Rancho Cucamonga, CA 91730			
DIMENSIONS IN INCHES REMOVE ALL BURRS		SURFACE ROUGHNESS PER ANSI B46.1 100 √		DESIGN BY:					
MACHINE RADII .005/.015 R.		MATERIAL NOTED		APPVD BY:		SIZE A FSCM NO. DWG NO. REV A 04AX3 30467-①-②			
BREAK ALL SHARP EDGES .002/.010 R.		FINISH		CUSTOMER NAME					
DECIMALS .XX .XXX		CUSTOMER P/N		CUSTOMER P/N					
FRAC ANGLES									
±.01 ±.005 ±1/64 ± 1°									