

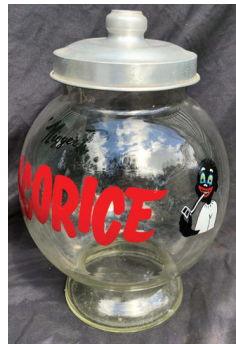
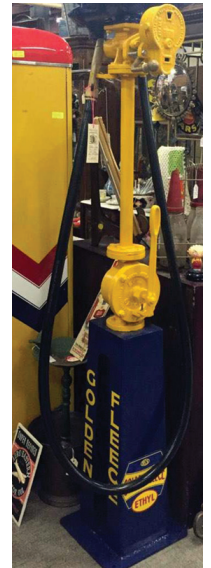
2 HUGE DAY

MILITARIA, COLLECTABLE, MANCAVE & ANTIQUE AUCTION



Items coming up in this auction include: great range of antique pistols & longarms this includes some standout items colt revolving carbine (type Ned Kelly used) & colt revolving shotgun, (antique, no license required), flare pistols, huge lot of collectable trench art & shells, collection of worldwide swords – Japanese, Samurai & WWII, bayonets, third reich & Japanese daggers, knives – eastern, bowie & fighting, third reich items including swords, hats & helmets, flags, etc., collection of Japanese WWII military related items, both restored and unrestored petrol bowlers – 1920's Gilbarco Atlantic bowser, 1930's Gilbarco electric clock face cm pump & Golden Fleece restored bowser, Ampol funnel, Shell advertising sign, enamel, tin & painted garage and advertising signs, 1940's nugget shop display, milk bar painted liquorice lolly jar, painted freddo frog advertising window, vintage Victorian Bitter pub mirror, 4 large deceased estates, Victorian, Edwardian, Colonial, Retro designer, Japanese & Chinese furniture, garden ornaments & heavy cast iron garden furniture, statues & urns, garden tools, 1900's sunshine 10ft farm gates, cast iron farm machinery wheels, 1940's industrial motor, cement mixer, covered work trailer, vintage railway lamps, historical items including original gold mining ledger and map from Castlemaine area, 1960's model planes, persian rugs, large gilded saloon mirrors, paintings, ceramic & china, estate jewellery, crystal, lamps, white goods, bedding and many great collectable items.

Saturday 5th & Sunday 6th January 2019
1500 Lots - 10am start
Old Kilmore Gaol, 8 Sutherland Rd, Kilmore Vic 3761



Viewing available from 12 pm - 6 pm Friday 4th January,
 8 am - 10 am Saturday 5th January & 8 am - 10 am Sunday 6th January.

For more information, photographs and full online photographed catalogue (available closer to the auction) will be available on website: www.oldiescollectables.com.au or
 phone: 0427-562-746/0418-380-845. Email oldiesc@bigpond.com