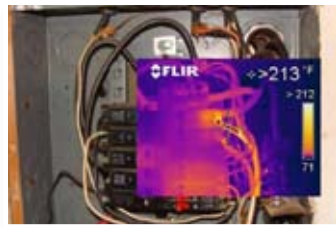


### Equipment Analysis without Paralysis.

Keeping your electrical and mechanical equipment running smoothly without downtime is your key to success. Even when there isn't time to go down for a scheduled PM, Tighe Industrial Solutions offers a HotSpot PM™ Service while your equipment is operational. With our state-of-the-art thermal imaging equipment, we can scan and visualize the temperature distribution and identify your problem areas - proactively and effectively. The HotSpot PM Service allows you to put together a plan to address equipment repair and replacement in an efficient manner, allowing you to plan accordingly to get the most out of a future scheduled PM.



Overheated circuit breaker

### EQUIPMENT SCANNED

- Electrical
  - Power distribution
  - Motor Control Center (MCC)
  - Switchgear
  - Breaker & fuse panels
- Mechanical
  - Motors
  - Pumps
  - Process valves

### SERVICES PROVIDED

- Complete evaluation of equipment to identify trouble areas with recommendations on repair or replacement.
- Documentation outlining:
  - Problem areas
  - Equipment identification
  - Thermal & digital images
  - Recommended solutions

*(Sample report provided upon request.)*

- HotSpot PM Service by a Senior TIGHE Technician. Call for pricing.

Schedule your HotSpot PM today!

# 877-879-1350

**TULSA OFFICE**  
 10205 E. 61st St.; Suite B  
 Tulsa, OK 74133  
 Phone: 918-994-4200  
 Fax: 918-994-4203

**DALLAS/FT. WORTH OFFICE**  
 6387 Camp Bowie Blvd.; Suite B-252  
 Fort Worth, TX 76116  
 Phone: 817-228-7602



# PARTS SALES & SERVICE

With decades of experience using multiple product brands, we believe that offering clients a portfolio of product options is a key to success. We will recommend a product solution that is proven, reliable and appropriate for your specific need.

The following list represents the key product lines we sell and service:

## MOTOR CONTROLS



## MOTORS



## LINE & SIGNAL CONDITIONERS - FEEDBACK & TENSION CONTROL



## PLC's



## Our Service Offerings Include:

- 🔄 24/7 Service
- 🔄 Product Sales and Support
- 🔄 AC and DC Drives, PLC and HMI
- 🔄 Installation and Start-Up Support
- 🔄 Board Repair
- 🔄 Motor Soft Starters
- 🔄 Servo Systems
- 🔄 Control Devices
- 🔄 Scheduled Maintenance Programs
- 🔄 Machine Control Retrofits
- 🔄 Programming and Designing
- 🔄 Predictive Maintenance
- 🔄 Training
- 🔄 SCADA
- 🔄 Gear Boxes
- 🔄 Panel Building