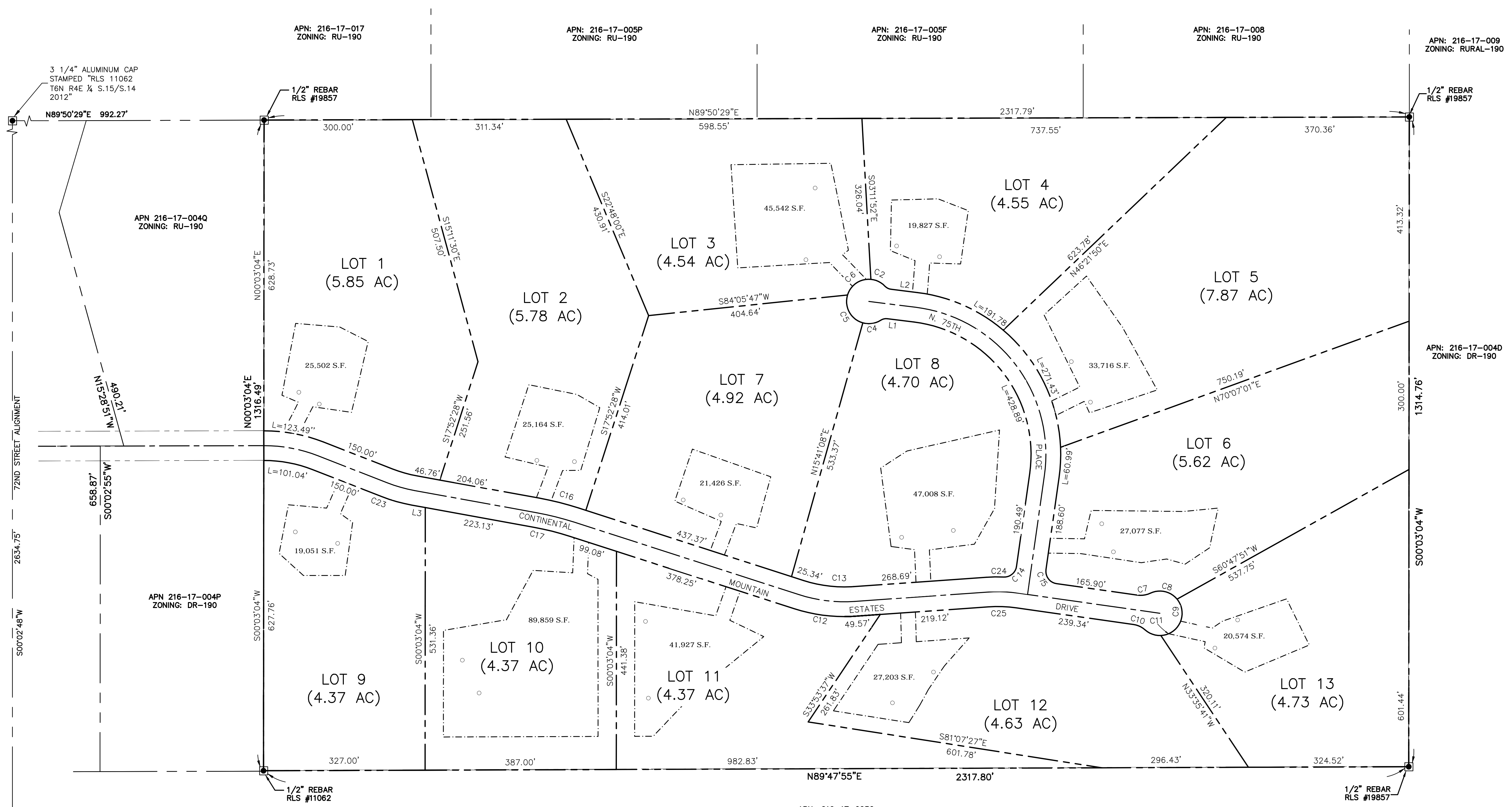
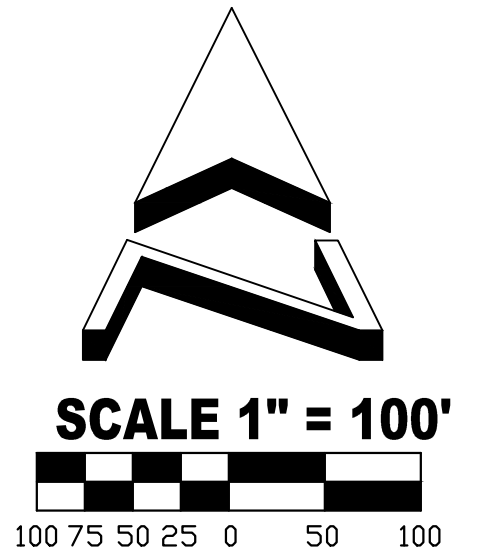


CONTINENTAL MOUNTAIN ESTATES SITE PLAN



3 1/4" ALUMINUM CAP
STAMPED "RLS 11062
T6N R4E 1/4 S.15/S.14
2012"

APN: 216-17-017
ZONING: RU-190

APN: 216-17-005P
ZONING: RU-190

APN: 216-17-005F
ZONING: RU-190

APN: 216-17-008
ZONING: RU-190

APN: 216-17-009
ZONING: RURAL-190

APN 216-17-004Q
ZONING: RU-190

APN: 216-17-004D
ZONING: DR-190

APN 216-17-004P
ZONING: DR-190

APN: 216-17-003C
ZONING: DR-190

FOUND STONE WITH
CONCRETE NAIL &
HASHMARKS
SW COR. SEC. 14,
T.6N., R.4E.



DATE

ALLEN CONSULTING ENGINEERS, INC.
 3921 E. BASELINE ROAD #112
 GILBERT, ARIZONA 85234
 PHONE (480) 844-1666
 E-MAIL: ace@allenconsultengr.com

**SITE PLAN FOR
CONTINENTAL MOUNTAIN ESTATES**

JOB NUMBER	94025	SHEET	1	OF	1
DRAWING	SITE PLAN				
DRAFTSMAN	CHECKED BY	DATE	03-24-16		