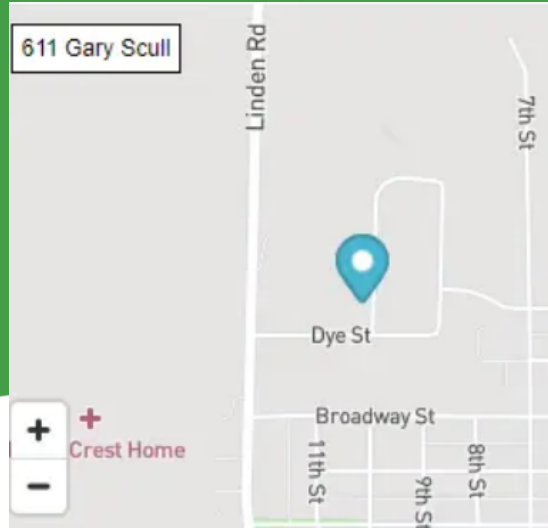


COMMUNITY FEATURES

- Affordable ... Income limits apply
- One, Two, and Three bedrooms
- Children's Playground
- Community Clubhouse
- Fitness Center
- Monitoring cameras
- Non-Smoking Community
- Off-street parking
- Online Payments
- On-Site manager
- Pet-Friendly Community
- 24 hour emergency maintenance



Christiansen Meadows



Please Call to Schedule a Showing

Hours

Monday - Wednesday: 8:30AM - 3:00PM
Friday: 8:30AM - 3:00PM
Saturday: 10:00AM - 2:00PM

611 Gary Scull Drive
Harlan, IA 51537

712.304.0782

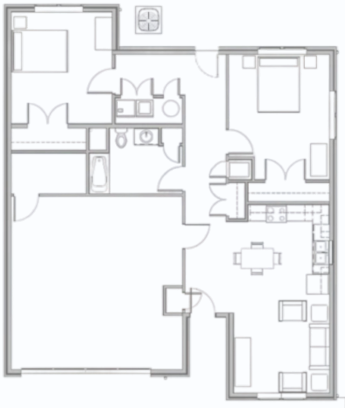


see more at www.beacon.cc

A quality community
designed just for you!



2 Bedroom
1 Bathroom
Townhome



3 Bedroom
2 Bathroom
Townhome



Christiansen Meadows

FEATURES

- ADA Homes Available
- Attached Garages (Duplex Homes)
- Extra Storage in every home.
- Full size In home washer and dryer.
- Fully equipped kitchens with refrigerator, range, microwave, dishwasher & disposal.
- Plank flooring in kitchens.
- Plush carpeting & laminate flooring.
- Ceiling fans.
- Custom fit window blinds
- Entry Closets
- All electric, gas, central air and water, sewer (paid by tenant).
- Private Patios or Balconies (Select Homes)
- Trash removal (paid by owner)

2 Bedroom
1 Bath
Apartment



1 Bedroom
1 Bath
Apartment



Gary Scull Drive
Harlan, IA 51537

712-304-0782



see more at www.beacon.cc

