

70mm French Door



Features

Frame Offering

- < 68mm standard outerframe with an 83mm option
- < A choice of 36mm, 46mm, 58mm and 68mm low PVC-u threshold
- < Choice of 3 transom widths - 63mm, 72mm and 86mm
- < Choice of open in and open out sashes
- < Available fully featured or bevelled
- < Available fully welded or mechanically jointed transoms/midrails
- < Choice of 2 aluminium low thresholds, disability at 15mm high and refurb with access ramps at 24mm high
- < Dedicated one piece double door adaptor.

Weatherseals

- < High performance Q-Lon gasket supplied in all mainframe sections with a manufacturer lifetime guarantee.

Reinforcing

- < Galvanised steel range to suit requirements
- < Galvanised steel lock prep steel
- < Aluminium range for mechanical joints
- < All reinforcements are designed to achieve required security and wind loading requirements.

Glazing

- < Choice of 4 glazing thicknesses - 24mm or 28mm for double glazed units. 36mm or 44mm for triple glazed
- < Astrical, Georgian bars in 20mm and 28mm widths.

Ancillaries

- < Comprehensive range of add-ons, couplers, corner posts, bay poles available to suit any installation.

Hardware

- < Fully depth eurogroove, accept comprehensive range of multi-point locks
- < Range of knuckle, rebate and flag hinges available including slave locking shootbolts and fingerbolts.
- < Secured By Design and Part Q specification available.

Ventilation

- < Proprietary ventilation devices can be used on all designs
- < A range of head details available including large outerframe, head extension and dedicated one piece head vent (see cavity closer for further details).

Test Results

Frame Type	Size	Air Permeability	Water Tightness	Wind Resistance	Standard	Accreditation Body
Double door, open in, int glazed, glass/glass	1800 x 2150	300Pa	450Pa	1200Pa	BS6375-1:2004	BSI
Double door, open out, int glazed, fully glazed	1800 x 2150	450Pa	300Pa	1200Pa	BS6375-1:2004	BSI
double door, open in, fully glazed, all low threshold	1800 x 2150	300Pa	100Pa	1200Pa	BS6375-1:2004	BSI

70mm French Door

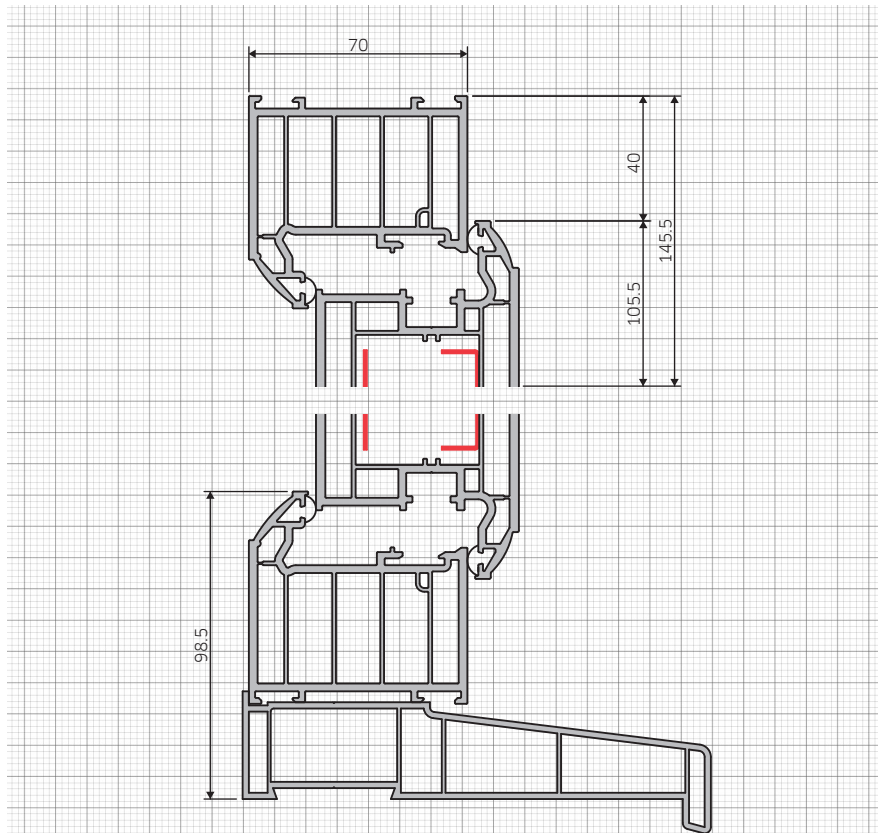
Performance

Security

- < Choice of multi-point high security locks along with pencil, rebate and flag hinge options
- < Slave door lock options to include shootbolts activated by central handle or top and bottom finger bolts
- < Available to achieve Secured By Design status.

Thermal

- < A number of simulations have been carried out by 'approved' simulators at Duraflex providing a range of DER's for Doors following the introduction of doors to the Energy scheme in December 2011
- < 'U' value simulations have been carried out to ensure the revised Building Regulations of October 1st 2010 requiring a minimum 'U' value of 1.8 W/m²K (1.6 W/m²K in Scotland). Further detailed simulations are being carried out and added to our already comprehensive portfolio.



General Features

- < **Q-Lon** - 99% compression recovery, high performance acoustic and weathersealing properties with lifetime guarantee. Operates perfectly in temperatures ranging from -20°C to 70°C
- < **Lead Free** - environmentally friendly, calcium organic lead free formulation
- < **Finishes** - comprehensive range of natural wood and solid colour foils
- < **Structural** - comprehensive range of coupling sections to suit various applications.

