

KITTITAS COUNTY

(Map/Key 12-2017)

FINAL COUNCIL REVIEW – 12-2017 (minor form updates 10-2018)

MASS-CASUALTY INCIDENT (MCI) PLAN

Purpose:

The county wide adopted plan to MCI exists to provide a coordinated and systematic delivery of emergency medical and transport services to county residents. The MCI Plan will integrate the immediate involvement of mutual aid, strike teams and task forces when requested by incident commanders. Boundaries will determine the initial agency in authority.

Policy:

It shall be policy when confronted with any multiple casualty incidents (MCI) to save the greatest possible number of casualties from death or serious disability. This is accomplished by prompt triage, appropriate treatment, and prioritized patient transportation to designated medical facilities.

At any given time, the on scene incident command officer may, by assessing the current conditions of the emergency, declare a **MASS CASUALTY INCIDENT**.

Definitions:

MCI (Mass Casualty Incident): An incident that overwhelms the emergency medical system.

MVI (Multiple Victim Incident): An incident that overwhelms the prehospital response. Receiving facilities can handle MVIs with early notification.

TREATMENT AREA: An area specified by the Incident Commander or Medical Group Supervisor for the treatment of casualties.

EQUIPMENT POOL: An area designated by the Incident Commander or Medical Group Command for the gathering of equipment such as backboards, trauma kits, oxygen etc...

STAGING AREA: A designated area where vehicles will be held until requested by the Incident Commander. All units responding to the incident shall report to Staging until assigned.

DMCC (Disaster Medical Control Center): Kittitas Valley Healthcare, aka “**Hospital Control**” will provide online medical direction for patient care to pre-hospital care providers and arrange a transport plan based on bed availability with appropriate facilities.

Revised 12-2017 (minor form updates 10-2018)

TRIAGE: A categorization system used to medically prioritize victims.

H.E.A.R. RADIO (Hospital Emergency Administrative Radio): Used to communicate from mobile to hospital and from hospital to hospital.

CELLULAR PHONE SYSTEM: May be utilized for mobile or on scene to hospital medical information.

TRIAGE AREA: Designated area where the casualties are triaged. This may be the area where the casualties are initially found, or a designated point to where the casualties are transported for appropriate triage.

TRANSPORTION AREA: An area that patients are moved to following treatment for transportation to a medical facility.

FUNNEL POINT: A central point designated by the Triage Team Leader that every patient filters through prior to movement into the Treatment area. (This location usually is located at the entrance to the treatment area.) Patients will be numbered for tracking and receive a triage ribbon if they have not yet done so.

TRIAGE TAPE: Red, Yellow, Green or Black/White striped surveyors tape is used to medically prioritize each patient. A piece of this tape will be affixed/tied to each patient prior to movement into the treatment area.

IMS: Incident Management System shall be implemented for the purpose of establishing an operational structure.

INCIDENT COMMAND: The incident command officer will be responsible for the overall orchestration of the emergency incident (should not be a paramedic).

COMMAND POST: The position that agencies will function on site to support the incident commander. The command post will function as the unified command post for all agencies.

MEDIC UNIT: Designated title to identify an ALS staffed and equipped response unit.

AID UNIT: Designated title to identify a BLS staffed response unit

AMBULANCE: Designated title to identify units requested to assist in the transport of victims to hospitals. Ambulance personnel may be utilized at scene operations as necessitated by the event.

MEDICAL GROUP SUPERVISOR: Will be in charge of overall medical operations and will report to the Incident commander (may be paramedic).

Note: Medical Group Supervisor will assign the following positions depending on available resources, qualifications, and circumstances.

TRIAGE TEAM LEADER: Member charged with organizing the triaging of all patients (preferred not a paramedic).

TREATMENT TEAM LEADER: Member charged with organizing the treatment area.

TRANSPORTATION TEAM LEADER: Will organize and supervise the transportation of all patients to medical facilities (preferred not a paramedic).

LITTER BEARERS: Individuals assigned by medical group command to assist in movement of injured patients to the designated triage area (Medical training is not required. May use green patients).

STAGING AREA MANAGER: Individual assigned to coordinate the movement of vehicles as requested by Incident Command.

Agency / Member Responsibilities:

Command and On Scene Operations: will be the responsibility of the fire department.

Transportation: ambulances and fire departments will be primarily responsible for the transport of patients to medical care facilities.

Security and Evacuation: law enforcement will be tasked with overall scene security and evacuation.

Coordination: Hospital Control, KVH, will assume the responsibility of providing coordination among hospitals in the event of a MCI/disaster.

Public Health: Kittitas County Health Department is the lead agency for the coordination of public health services.

Morgue, Identification of the Dead and the Disposition of the Deceased: The Kittitas County Coroner will manage the deceased victims, including temporary morgue, identification, and disposition of the deceased.

Terrorism: The FBI may assume identification responsibilities in accidents involving terrorism.

Assistance to victims and scene support for responders: The Red Cross will coordinate with affected families, assisting relatives and friends, and scene support to emergency response personnel. Kittitas County Churches may assist in this role.

On-Scene Responsibilities:

The first arriving member(s) shall conduct incident size up, estimate number of patients and initiate action to set up an MCI scene, call for assistance, and notify the IC of all pertinent incident information (i.e. HAZMAT, hazards, etc.). On scene operations will be structured under the National Incident Management System.

IC: “COMMAND” will assume overall scene operations pertaining to the emergency incident. Unified Command, communications, resources, authority, and tactical plans will be established through “COMMAND”.

MEDICAL GROUP SUPERVISOR: (radio call sign “MED GROUP”) Medical Command will be responsible for the coordination of all medical triage, treatment and transport. MED GROUP will contact KVH-House Supervisor to declare the MCI, and request activation of protocols. MED GROUP will designate triage, treatment and transport areas, and assign person to areas as manpower allows, and assure treatment and transport areas are setup. These assignments should be made verbally to avoid unnecessary radio traffic. MED GROUP will request and update COMMAND regarding the status and needs of the medical operations.

TRIAGE TEAM LEADER: (radio call sign “TRIAGE”) TRIAGE, assigned by MED GROUP, will set up the triage area as designated. All patients shall enter the treatment area through a triage funnel point. At the triage funnel point, patients will be numbered on their head, reassessed by highest level EMS provider available (R, Y, G), and placed in the appropriate treatment area.

TREATMENT TEAM LEADER: (radio call sign “TREATMENT”) TREATMENT, assigned by MED GROUP, will be responsible for the treatment of patients and registering of all patients on Treatment Tracking Chart. TREATMENT will set up treatment areas equipment, and prepare to receive triaged patients. On line medical direction will be accomplished through Hospital Control as needed by TREATMENT. Triage tags will be completed for each patient, following re-triaging as needed, and affixed with the triage ribbon to the patient prior to transport. TREATMENT will request additional resources through MED GROUP.

TRANSPORT TEAM LEADER: (radio call sign “TRANSPORT”) TRANSPORT assigned by MED GROUP, will be responsible for the transfer of patients to receiving hospitals in collaboration with **Hospital Control**. TRANSPORT will identify access and egress routes, coordinate loading, transporting and registering of all patients on Transportation Tracking Chart. Transport will communicate with Hospital Control to determine patient destination, and coordinate transportation through the Treatment Team Leader. TRANSPORT will maintain records of patient’s destination and the transporting agency on the Transportation Tracking Chart. Transport Leader should send copy of Transportation Tracking Chart to **Hospital Control** at the end of the incident.

SAFETY OFFICER: (radio call sign “SAFETY”) The assignment of the safety officer by command will be made as soon as manpower allows. SAFETY will assume the power and

authority to identify, control, and intercede in any portion of the incident which is judged to be a potential threat to the wellbeing of incident scene operations. SAFETY will inform command immediately of any such situation and only allow efforts to continue after the harmful condition/situation is resolved.

STAGING AREA MANAGER: (radio call sign “STAGING”) As assigned by COMMAND, the individual responsible for staging will assign companies to the operations as requested by command. STAGING will update COMMAND as to the units available and/or the need for resources to respond to the staging area. STAGING will inform ambulances to the proper access and egress as identified by TRANSPORT.

Activation of MCI Plan:

To activate an MCI plan, the officer in charge of the incident will contact KITTCOM and provide the following information:

- Title or unit number
- Notification that a Mass Casualty Incident exists with approximate patient count. (NOTE: KITTCOM will then notify all appropriate staff per MCI run card.)
- Complicating circumstances (HAZMAT, safety hazards, etc.)
- Any additional resources requested beyond those listed on the MCI cards (See MCI additional resources below, activated via KITTCOM).

MCI Cards (see appendix C):

HD#1-A (Yellow): KCHD#1, West of City of Kittitas, South of Lauderdale Intersection, East of Elk Heights MP93, & all adjacent areas

HD#1-B (Pink): KCHD#1, Vantage and HD#1 East of City of Kittitas, & all adjacent areas

HD#1-C (Orange): KCHD#1, Hwy 97 (Blewett Pass), & all adjacent areas

HD#2-A (Blue): KC Hospital District #2 - West of I90 MP74 (West Nelson Siding) to MP53 (East Snoqualmie Summit), & all adjacent areas North & South

HD#2-B (Green): KC Hospital District #2 - East of I90 MP74 (West Nelson Siding) to MP93 (Elk Heights), SR 903, SR970, & all adjacent areas North & South

Note: All EMS agencies have been provided copies of the MCI cards which are color coded and also include a color-coded MCI Response Area Key/Map, and an ICS Organization Chart. The laminated MCI Cards are to be kept in command vehicles and EMS units for on scene reference.

Communications:

On-scene radio communications will be kept to an absolute minimum. When possible, direct verbal contact, or runners will be used. COMMAND should be the only person communicating with KITTCOM. All EMS communications on HEAR will be limited to MED GROUP and TRANSPORT. Incident communications shall be on a tactical frequency selected by the incident commander.

Transportation:

Ambulances will be used for patient transportation. Supplies will be removed from vehicles depending on incident needs. Medic Units typically will be held at the scene for medical supplies and resources, but may be utilized for transport as needed. Aid unit and ambulance personnel being used for transportation will remain with their respective vehicles until they are requested to the transport area by COMMAND.

Air transportation should be utilized as needed. Agencies requested should be informed as to the designated landing zone. Landing zones need to be established with the designate personnel to assure safety and manpower to facilitate expenditures patient transferring.

Busses may offer multiple transferring of patients to receiving hospitals. Stretcher capable busses may be available through military. Kittitas County resources include Hope Source and various school districts.

Patient information may be recorded on standard patient care forms to the extent possible by the transporting unit's crew.

Additional Resources (activated via KITTCOM):

Manpower Options:

Search & Rescue - via KITTCOM

Community Emergency Response Teams (CERT) – via KITTCOM

CWU EMS Students - via KITTCOM or Jim Pierce, Club Coordinator 509-899-7077

Special Resource Considerations: Department of Transportation, Public Works, Public Health Dept. (Environmental Health), Hospital Decontamination Unit, Department of Ecology, Mental Health, BNSF, ARES/RACES

Deceased Persons:

Deceased persons will be tagged, covered with a sheet or blanket and when possible, not moved. MED GROUP will coordinate with the medical Examiner representative in arranging for temporary morgue facilities and/or transportation.

Triage Ribbon, Triage Tags, and Priority Selection Criteria:

Triage ribbon, Triage tags, patient tracking forms, and numbering materials will be carried on all command, aid, and medic units.

Triage ribbon should be used anytime there are three or more seriously injured people or when there are five or more victims at an incident.

Triage tags should be used when the Treatment and Transportation Tracking Charts are used.

Triage Criteria

RED - Immediate (physiologically unstable)

- A patient who is breathing more than 30 times a minute.
- Capillary refill greater than 2 seconds or non-palpable radial pulse
- Decreased level of consciousness. Patient is unable to follow commands.

YELLOW-Delayed (physiologically stable)

Any patient who is injured, but is not tagged immediate (RED) yet is more serious than green, or dying (BLACK/WHITE STRIPE).

GREEN- Minor/Non-Injured

Any person who can initially walk away from the accident to a designated holding area
Additional patients that are triaged with minor injuries

BLACK/ WHITE STRIPE - Obvious Death (DOA)

Patients who have obviously expired or are expected to because of their injuries

S.T.A.R.T.

SIMPLE TRIAGE AND RAPID TREATMENT/TRANSPORT

The START plan allows EMS personnel to survey a victim, and quickly make an initial assessment for the treatment needs and priority transport to a receiving center. It is extremely simple to learn and use in the field. The START plan follows the ABC's and requires no special skills or specific victim diagnosis. This allows pre-hospital providers to effectively use it and stabilize life threatening airway and bleeding problems.

The START PLAN uses 3 criteria to categorize victims:

- 1. Respiration**
- 2. Perfusion**
- 3. Mentation**

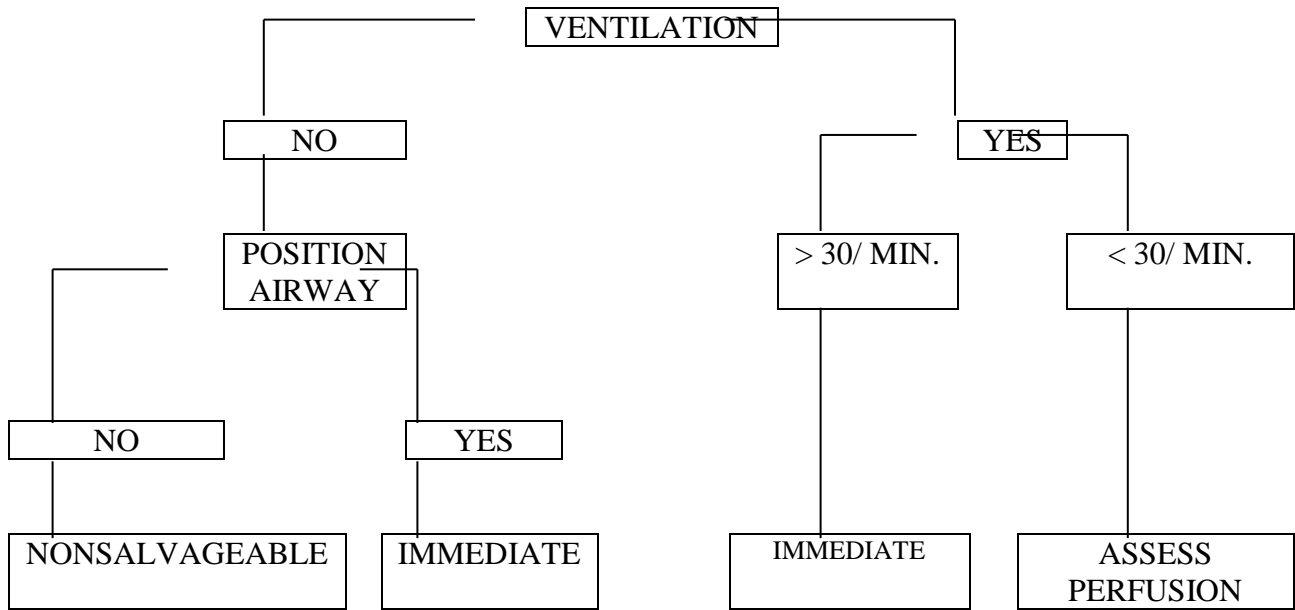
STEP 1

The initial responder enters the incident area, identifies self and directs all victims who can walk to gather and remain in safe place. This system identifies those who presently have respiratory, circulatory, mental and motor function to walk. Most of these victims will be given delayed/green tags; however, they are not tagged at this time, but triaged separately later. This is the first triage and the victim's status may change in the future.

STEP 2

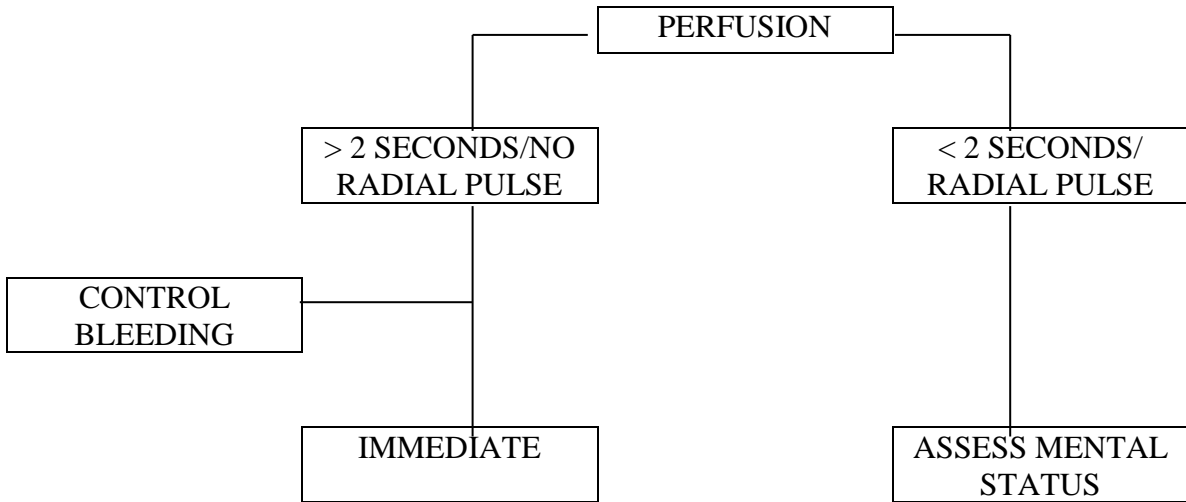
Evaluate non-ambulatory victims where they lie.

Assess **VENTILATION**: Is it normal, rapid or absent? If absent, reposition airway. If respirations remain absent, tag black. Do not perform CPR. If the victim needs help in maintaining an open airway or has a respiratory rate >30 per minute, tag red (attempt to utilize non EMS person to hold position of airway). If respirations are normal <30 per minute, go to next step.



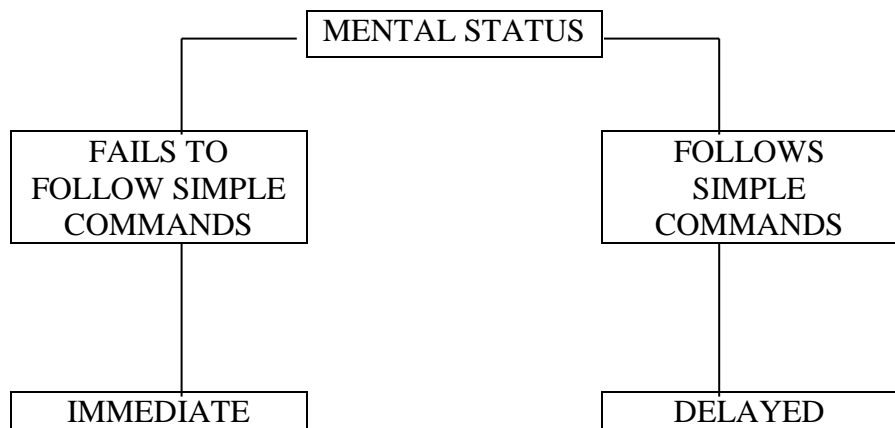
STEP 3

Assessing victims **PERFUSION**: Perfusion can be assessed by performing the capillary refill test or by palpating a radial pulse. If the capillary refill is >2 seconds or if the radial pulse is absent, tag immediate/RED. If the capillary refill is <2 seconds if the radial pulse is present, go to the next step. Any life threatening bleeding should be controlled now and if possible, elevate the victims legs to begin shock treatment (attempt to utilize non EMS person to hold pressure/bleeding control).



STEP 4

Assess victims **MENTAL STATUS**: If the victim has not already demonstrated that he can follow simple commands, ask them to perform a simple task. If the patient cannot follow simple commands, the patient is tagged immediate/red. If the patient can follow simple commands, the patient is tagged delayed/yellow or green depending on their condition (the victim’s injuries will determine the priority of yellow vs. green. (i.e., multiple fractures would require a higher level of treatment than superficial lacerations).



The **START PLAN** is a simple, step-by-step triage and treatment method to be used by all levels of pre-hospital providers at Mass Casualty Incidents. This method allows for rapid identifications of those victims who are at the greatest risk for early death and the provision of basic life-saving/ stabilization techniques.

Appendix A

Check Lists:

- Incident Command Checklist
- Medical Group Supervisor Checklist
- Triage Leader Checklist
- Treatment Leader Checklist
- Transportation Leader Checklist
- Staging Area Manager (**New**)

Appendix B

Tracking Forms:

- Treatment Tracking Chart
- Transportation Tracking Chart
- Staging Resources Tracking Chart (**New**)

Appendix C

MCI Cards:

- **MCI Response Area Key (MAP) – Updated 12/2017 (mergers reflected)**
- **Organizational Chart**
- **HD#2-A (Blue):** KC Hospital District #2 - West of I90 MP74 (West Nelson Siding) to MP53 (East Snoqualmie Summit), & all adjacent areas North & South
- **HD#2-B (Green):** KC Hospital District #2 - East of I90 MP74 (West Nelson Siding) to MP93 (Elk Heights), SR 903, SR970, & all adjacent areas North & South
- **HD#1-A (Orange):** KCHD#1, Hwy 97 (Blewett Pass), & all adjacent areas
- **HD#1-B (Yellow):** KCHD#1, West of City of Kittitas, South of Lauderdale Intersection, East of Elk Heights MP93, & all adjacent areas
- **HD#1-C (Pink):** KCHD#1, Vantage and HD#1 East of City of Kittitas, & all adjacent areas

Appendix A

INCIDENT COMMAND CHECKLIST

RESPONSIBILITIES:

Assume responsibility for the entire Mass Casualty Incident.

DUTY CHECKLIST:

- [] Assure MCI Card activation with KITTCOM
- [] Identify previous Incident Commander and facilitate transfer of command if needed.
- [] Don Identification vest
- [] Identify the incident command post and establish unified command if needed.
- [] Assess situation and determine needs, refer to MCI Card for resource activation.
- [] Identify Staging, and if appropriate, Staging Area Manager.
- [] Contact and work in close communication to Medical Group Supervisor.
- [] Request additional equipment and/or manpower as necessary
- [] Identify a PIO and Safety Officer – personnel permitting.
- [] Maintain scene security
- [] Direct outside support agencies as needed:
 - [] **Hospital Control 509-899-4151 (Alternate 509-933-8739)**
 - [] Law Enforcement
 - [] Medical Examiner
 - [] Public Utilities
 - [] Red Cross

MEDICAL GROUP SUPERVISOR CHECKLIST

RESPONSIBILITIES:

Direct and supervise the overall medical operations.

DUTY CHECKLIST:

- [] Report to and work in close communication to the Incident Commander, with priority to directly oversee the medical operations.
- [] Obtain needed equipment (vest, clipboard, checklists, triage kits, etc.).
- [] Don Identification vest
- [] Assess medical situation and needs, report to COMMAND.
- [] Assure that all appropriate medical positions are filled:
 - [] Triage
 - [] Treatment
 - [] Transport
- [] Establish communication with **Hospital Control 509-899-4151 (Alternate 509-933-8739)**, request to activate protocol for MCI. Give **Hospital Control** size-up of situation with estimated number of casualties and categories of injured (#red, #yellow, #green).
- [] Establish funnel point from triage to treatment. Number patients on forehead and re-triage if needed as patients pass through.
- [] Consult with Treatment Leader on location of treatment area.
- [] Consult with Transport Leader regarding location of transport area and establishment of communication with **Hospital Control**.
- [] Establish an equipment pool adjacent to the treatment area for incoming medical equipment. Coordinate with Staging Manager if assigned.
- [] Establish a manpower pool for Litter Bearers. Assure proper equipment, lifting teams, and techniques. Notify Triage and Treatment Leaders.

TRIAGE LEADER CHECKLIST

RESPONSIBILITIES:

Direct and coordinate the evaluation, prioritizing, and tagging of casualties. TRIAGE will coordinate litter bearers to facilitate patient movements.

DUTY CHECKLIST:

- [] Don Identification vest
- [] Obtain needed equipment (MCI Cards w/checklists and tracking forms, triage belt, clipboard, vest).
- [] Identify triage member(s) and implement triage process.
- [] Estimate number of casualties (categorize R, Y, G and report to Medical Group).
- [] Consult with Medical Group Supervisor on location of funnel point.
- [] Facilitate numbering of casualties at funnel point.
- [] Acquire medical supplies for transporting patients to treatment area.
- [] Identify and brief the Litter Bearers on job assignments.
- [] Coordinate with Treatment Leader to assure that patients are being delivered to the correct treatment area.
- [] Maintain safety and security of the triage area.
- [] Keep Medical Group Supervisor informed of your status.
- [] Report to Medical Group Supervisor for reassignment when triage is completed.

TREATMENT LEADER CHECKLIST

RESPONSIBILITIES:

Direct and coordinate treatment of patients in treatment area.

DUTY CHECKLIST:

- [] Don Identification vest
- [] Obtain needed supplies (MCI card w/tracking charts, triage tags, medical supplies, Blankets, etc.)
- [] Obtain estimated of the number of casualties
- [] Consult with Medical Group Supervisor to determine locations of treatment area.
- [] Set up treatment area into 3 sections; red, yellow, and green
- [] Using the treatment tracking form, record all patients entering the treatment area.
- [] Assure that all patients in treatment area are properly numbered (# on head and with numbered triage tag).
- [] Assign incoming EMS personnel to specific treatment section and assure that each treatment section is always manned.
- [] Assure that appropriate medical care is being delivered and patients are kept warm.
- [] Request medical supplies or personnel needs through Medical Group Supervisor.
- [] Record patients on Treatment Tracking Form.
- [] Identify, as needed, medical leaders in each treatment section that are not allowed to leave.
- [] Coordinate with Transportation Leader, as soon as possible, to initiate Transport Plan. **DO NOT** wait for all patients to enter Treatment area before initiating transport to appropriate medical facility.

TRANSPORTATION LEADER CHECKLIST

RESPONSIBILITIES:

Coordinate with **Hospital Control 509-899-4151 (Alternate 509-933-8739)** and record the transportation of all patients to medical facilities. Transport will maintain radio communication with the Medical Group Supervisor to provide updates on patient distribution to receiving hospitals. **Hospital Control** will contact receiving hospitals for bed availability and recommend a Transport plan.

DUTY CHECKLIST:

- [] Don Identification vest.
- [] Obtain needed equipment (MCI Cards w/Transportation Tracking Chart, clipboard, vest, etc).
- [] Obtain estimated number of casualties and categories (#red, #yellow, #green)
- [] Identify a safe, efficient loading area (transportation corridor) adjacent to the treatment area. Secure access and egress routes and inform staging (coordinate with Staging Manager if assigned).
- [] Determine that an appropriate number of transport vehicles have been called to the incident.
- [] Additional equipment is requested through MED GROUP.
- [] Using the Transportation Tracking Form consult with Treatment Leader to determine when and what patients are ready for transport.
- [] Identify and brief Litter Bearers as necessary.
- [] Initiate communications with **Hospital Control-House Supervisor** for patient distribution. Text picture of Tracking Form when possible and provide updates as needed. Request receipt confirmation from HC. Communications should be maintained as needed for expeditious patient transfer.
- [] Be sure to document all patient destinations and transporting agencies on form. Text copy to **Hospital Control** once all patients are transported for accountability.
- [] Maintain security and safety in patient loading area.
- [] Collect ambulance supplies and equipment as needed for patient care during transport.

STAGING AREA MANAGER CHECKLIST (NEW)
(if not under Operations)

RESPONSIBILITIES:

Establish a staging area for incoming emergency vehicles and personnel; directing emergency response vehicles to the staging area; stock piling equipment; informing the IC, OPS Chief or Medical Group Supervisor of the EMS certification levels of arriving personnel. Coordinate with the Transportation Leader the movement of arriving units and resources that will be transporting patients and directing the ambulance to the loading zone. Deployment of resources will be assigned by the Incident Commander or designee.

DUTY CHECKLIST:

- Don Identification vest
- Obtain needed supplies (MCI Cards w/Staging Tracking Chart, clipboard, etc).
- Obtain estimated number of casualties
- Consult with Transportation Leader to coordinate Transportation Corridor/Loading area.
- Designate staging location and ingress route, collaborating with the IC or Medical Group Supervisor (MGS).
- Log each arriving unit # and type of personnel on Staging Tracking Chart, provide information on quantity and types of units to the IC or MGS.
- Assign units to tasks as directed by the IC or MGS.
- Assure the arriving units have proper credentials for designated capability.
- Ensure a driver stays with each unit (preferably not EMS provider?).
- Make radio contact with incoming units, manage ingress and ensure all transport units have immediate egress.
- Prevent freelancing.

TREATMENT TRACKING CHART

NOTE: Text picture of form to Kittitas Valley Healthcare – House Supervisor 509-899-4151
(text updates as needed)

*Include patient # on head and # on Triage Tag

(Alternate 509-933-8739)

*PT. # & COLOR	AGE SEX	CHIEF COMPLAINT	ALS RX	HOSPITAL TX UNIT
# /R Y G				
# /R Y G				
# /R Y G				
# /R Y G				
# /R Y G				
# /R Y G				
# /R Y G				
# /R Y G				
# /R Y G				
# /R Y G				
# /R Y G				
# /R Y G				
# /R Y G				
# /R Y G				
# /R Y G				
# /R Y G				
# /R Y G				
# /R Y G				
# /R Y G				
# /R Y G				
# /R Y G				
# /R Y G				
# /R Y G				

TRANSPORTATION TRACKING CHART

**NOTE: Text picture of form to Kittitas Valley Healthcare – House Supervisor 509-899-4151
(text updates as needed)**

*Include patient # on head and # on Triage Tag

(Alternate 509-933-8739)

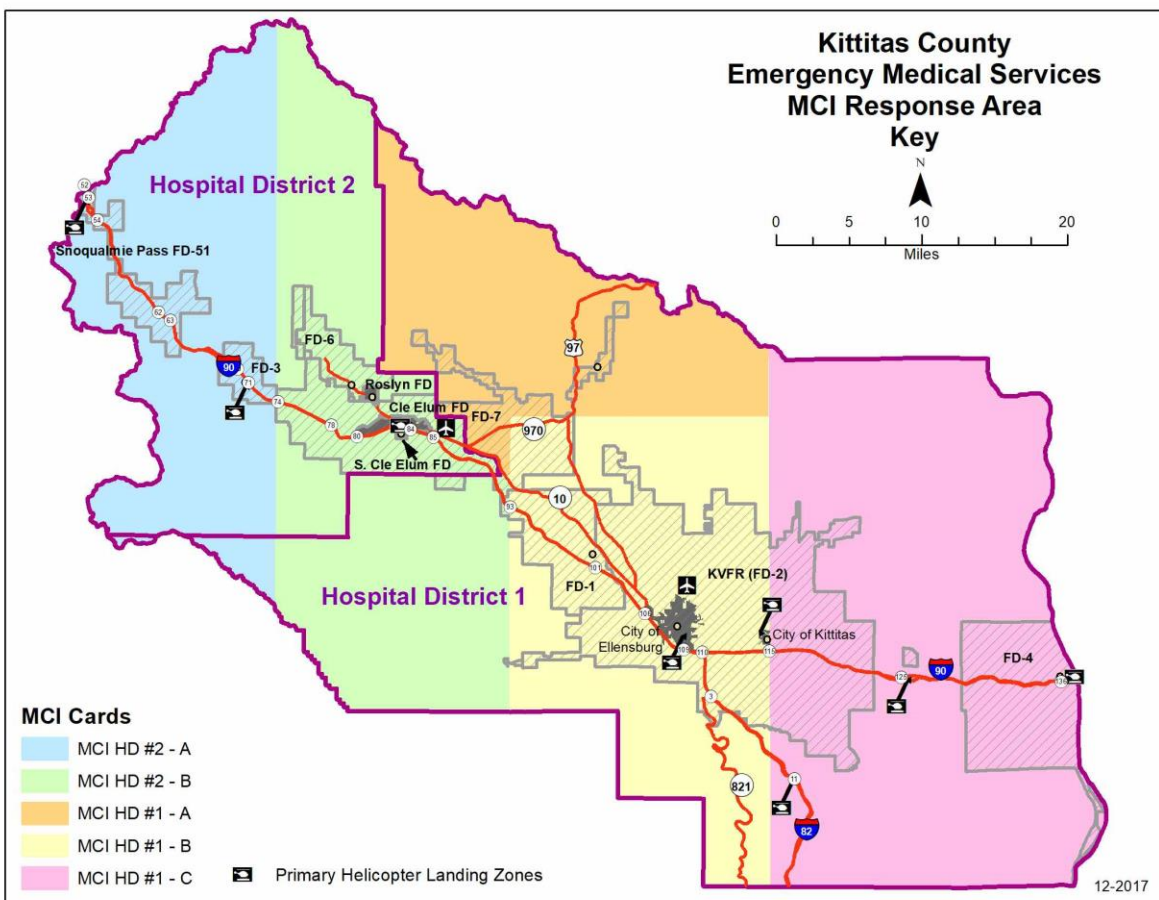
*PATIENT #/TRIAGE # - PATIENT NAME (if avail.)	PT Status (color)	CHIEF COMPLAINT (age & sex)	HOSPITAL	TX UNIT #	DEPART TIME
# -	R Y G				
# -	R Y G				
# -	R Y G				
# -	R Y G				
# -	R Y G				
# -	R Y G				
# -	R Y G				
# -	R Y G				
# -	R Y G				
# -	R Y G				
# -	R Y G				
# -	R Y G				
# -	R Y G				
# -	R Y G				
# -	R Y G				
# -	R Y G				
# -	R Y G				
# -	R Y G				
# -	R Y G				
# -	R Y G				
# -	R Y G				

STAGING AREA TRACKING FORM

NOTE: Keep track of all resources and their capabilities. This includes air resources, HAZMAT, DOE, etc.

Unit Number	In Time	Out Time	Assignment (rescue, treatment, etc)	Comments: (service level)

Appendix C
(UPDATED 1-2018)



Response Area Key:

MCI HD#2-A (Blue): KC Hospital District #2 - West of I90 MP74 (West Nelson Siding) to MP53 (East Snoqualmie Summit), & all adjacent areas North & South

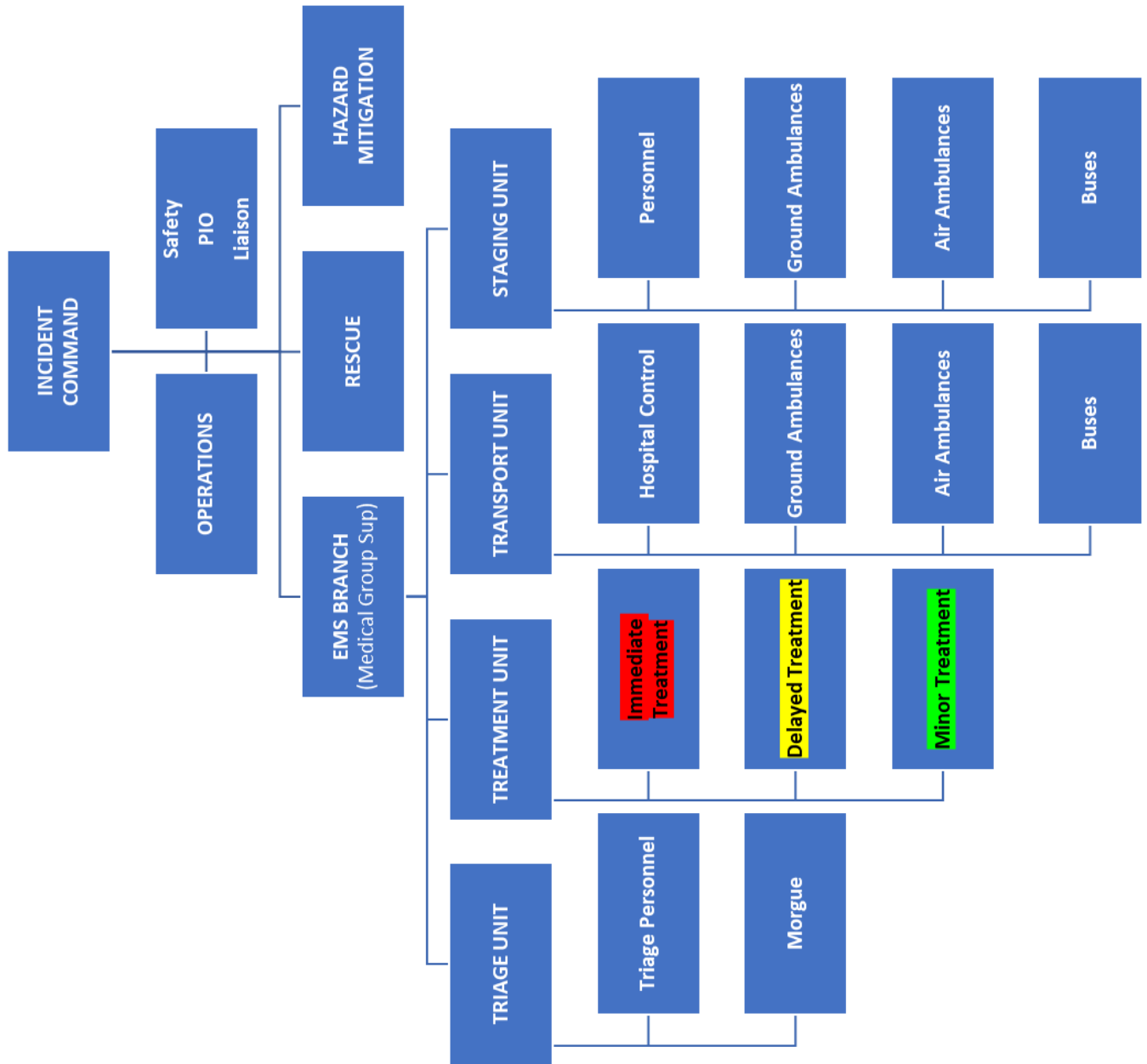
MCI HD#2-B (Green): KC Hospital District #2 - East of I90 MP74 (West Nelson Siding) to MP93 (Elk Heights), SR 903, SR970, & all adjacent areas North & South

MCI HD#1-A (Orange): KCHD#1, Hwy 97 (Blewett Pass), & all adjacent areas

MCI HD#1-B (Yellow): KCHD#1, West of City of Kittitas, South of Lauderdale Intersection, East of Elk Heights MP93, & all adjacent areas

MCI HD#1-C (Pink): KCHD#1, Vantage and HD#1 East of City of Kittitas, & all adjacent areas

EMS ICS ORGANIZATIONAL CHART



Mass Casualty -- MCI HD#2-A (blue)

RESPONSE AREA: KC Hospital District #2 - West of I90 MP74 (West Nelson Siding) to MP53 (East Snoqualmie Summit), & all adjacent areas North & South

RESOURCE GOALS: As soon as initial number of patients is confirmed; resource notification is based on this number. MCI activation may be requested for fewer patients. Once minimum goals are met, additional resources need to be requested. Entrapment will be assumed at all MCI's unless directed otherwise. Resources are in addition to initial dispatch.

<u>15 or less PATIENTS:</u> <ul style="list-style-type: none"> • 5 EMS transport units • 2 Fire units • 3 LE units • Launch 1 Helicopter (cancel if not needed) • See additional resource notification for "All Categories" 	<u># EMS Units</u>	<u># FIRE/AID Units</u>	<u>AIR AMB.</u>
<u>16-30 PATIENTS:</u> <ul style="list-style-type: none"> • 7 EMS transport units • 3 Fire units • 4 LE units • Launch 2 Helicopters (cancel if not needed) • See additional resource notification for "All Categories" 	1) HD#2 Medic 2 units	1) FD#3 Aid Extrication Engine	1) ALNW 2) LifeFlight 3) MEDEVAC
<u>31 or more PATIENTS:</u> <ul style="list-style-type: none"> • 10 EMS transport units (Automatic request for King Cty. Medic Strike Team Request) • 4 Fire units • 5 LE units • Request King County MCI Trailer (w/ETA) • Search and Rescue Coordinator • Launch 3 Helicopters (cancel if not needed) • See additional resource notification for "All Categories" 	2) A-731 3) A-761 4) A-10291 5) A-511 6) A-10292	2) FD#7 2 Engines Extrication Rehab. Rig 3) FD#51 Aid 2 Engines Extrication	<u>Radio Channels</u> FIRE OPS FIRE PAGE FIRE TAC 3 FIRE TAC 5 FIRE MANASH LAW MAIN LAW ALT LAW MANASH TAC 1 LAW TAC 2 LAW TAC 4 LERN SAR HEAR OSCCR RED NET LOCAL WX
<u>NOTIFICATIONS FOR ALL CATEGORIES:</u> <ul style="list-style-type: none"> • KCFD#1 Rescue Unit • KVH House Supervisor 509-899-4151 / 509-933-8739 • Bus • Red Cross • Coroner as needed 	7) KVFR Medic 2-3 units 8) King Cty. (Request # of units still needed. Request call back to confirm # sending & ETA)	4) CEFD Aid Engine Extrication 5) FD#6 Aid Engine 6) ESF&R Engine 7) Roslyn FD Engine 8) KCFD#1 Rescue Unit	

ON SCENE REMINDERS

IC or On-scene Responders – Cancel or increase # of units & **HELICOPTERS** per need

Agency Move-up Options: Kittitas Valley Fire & Rescue, Cle Elum Fire Dept., FD#7, FD#6, Roslyn FD

Additional Manpower/Resource Options: Search & Rescue, Community Emergency Response Teams (CERT), CWU EMS Students, King or Yakima County MCI Trailer

Special Resource Considerations: Department of Transportation, Public Works, Public Health Dept. (Environmental Health), Hospital Decontamination Unit, Department of Ecology, Mental Health, BNSF, ARES/RACES

Mass Casualty -- MCI HD#2-B (green)

RESPONSE AREA: KC Hospital District #2 - East of I90 MP74 (West Nelson Siding) to MP93 (Elk Heights), SR 903, SR970, & all adjacent areas North & South

RESOURCE GOALS: As soon as initial number of patients is confirmed, begin notification based upon the number of patients. MCI activation may be requested for fewer patients. Once goals are met, discontinue notification. Assume entrapment of all MCI's unless directed otherwise. Resources are in addition to initial dispatch.

15 or less PATIENTS:	# EMS Units	# FIRE/AID Units	AIR AMB.
<ul style="list-style-type: none"> • 5 EMS transport units • 2 Fire units • 3 LE units • Launch 1 Helicopter (cancel if not needed) • See additional resource notification for "All Categories" 	1) HD#2 Medic 2 units 2) A-731 3) A-761 4) A-511 5) KVFR Medic 2-3 units 6) A-10291	1) FD#7 Aid 2 Engines Extrication Rehab. Rig 2) KCFD#1 Aid Engine Extrication Rescue Unit 3) CEFD Aid 2 Engines Extrication	1) ALNW 2) LifeFlight 3) MEDEVAC
16-30 PATIENTS: <ul style="list-style-type: none"> • 7 EMS transport units • 3 Fire units • 4 LE units • Launch 2 Helicopters (cancel if not needed) • See additional resource notification for "All Categories" 	7) King or Yakima Cty. (Request # of units still needed. Request call back to confirm # sending & ETA)	4) FD#3 Aid Engine Extrication 5) SPFR Aid Engine Extrication	Radio Channels FIRE OPS FIRE PAGE FIRE TAC 3 FIRE TAC 5 FIRE MANASH LAW MAIN LAW ALT LAW MANASH TAC 1 LAW TAC 2 LAW TAC 4 LERN SAR HEAR OSCCR RED NET LOCAL WX
31 or more PATIENTS: <ul style="list-style-type: none"> • 10 EMS transport units (Automatic request for King Cty. Medic Strike Team) • 4 Fire units • 5 LE units • Request King or Yakima County MCI Trailer (w/ETA) • Search and Rescue Coordinator • Launch 3 Helicopters (cancel if not needed) • See additional resource notification for "All Categories" 		6) FD#6 Aid Engine 7) RFD Engine	
NOTIFICATIONS FOR ALL CATEGORIES: <ul style="list-style-type: none"> • KCFD#1 Rescue Unit • KVH House Supervisor 509-899-4151 /509-933-8739 • Bus • Red Cross • Coroner as needed 			

ON SCENE REMINDERS

IC or On-scene Responders – Cancel or increase # of units & **HELICOPTERS** per need

Agency Move-up Options: Kittitas Valley Fire & Rescue, SPF&R, FD#1, FD#3, FD#6, Roslyn FD,

Additional Manpower/Resource Options: Search & Rescue, Community Emergency Response Teams (CERT), CWU EMS Students, King or Yakima County MCI Trailer

Special Resource Considerations: Department of Transportation, Public Works, Public Health Dept. (Environmental Health), Hospital Decontamination Unit, Department of Ecology, Mental Health, BNSF, ARES/RACES

Mass Casualty -- MCI HD#1-A (orange)

RESPONSE AREA: KCHD#1, Hwy 97 (Blewett Pass), & all adjacent areas

RESOURCE GOALS: As soon as initial number of patients is confirmed; resource notification is based on this number. MCI activation may be requested for fewer patients. Once minimum goals are met, additional resources need to be requested. Entrapment will be assumed at all MCI's unless directed otherwise. Resources are in addition to initial dispatch.

<u>15 or less PATIENTS:</u>	<u># EMS Units</u>	<u># FIRE/AID Units</u>	<u>AIR AMB.</u>
<ul style="list-style-type: none"> • 5 EMS transport units • 2 Fire units • 3 LE units • Launch 1 Helicopter (cancel if not needed) • See additional resource notification for "All Categories" 	1) KVFR Medic 2-3 units 2) HD#2 Medic 3) A-731 4) A-511 5) Ballard or Lifeline Amb. 1-4 units 6) A-761 7) Yakima (AMR/ALS) 1-2 units 8) Wenatchee or Yakima: (Request # of units still needed. Request call back to confirm # sending & ETA)	1) FD#7 Aid 1-4 Engines Extrication 2) KCFD#1 Rescue Unit Aid Engine 3) KVFR 1-2 Engines Extrication 4) CEFD Aid Engine Extrication	1) ALNW 2) LifeFlight 3) MEDEVAC <div style="text-align: center;"><u>Radio Channels</u></div> FIRE OPS FIRE PAGE FIRE TAC 3 FIRE TAC 5 FIRE MANASH LAW MAIN LAW ALT LAW MANASH TAC 1 LAW TAC 2 LAW TAC 4 LERN SAR HEAR OSCCR RED NET LOCAL WX
<u>16-30 PATIENTS:</u> <ul style="list-style-type: none"> • 7 EMS transport units • 3 Fire units • 4 LE units • Launch 2 Helicopters (cancel if not needed) • See additional resource notification for "All Categories" 			
<u>31 or more PATIENTS:</u> <ul style="list-style-type: none"> • 10 EMS transport units (medic strike team) • 4 Fire units • 5 LE units • Request Yakima County MCI Trailer (w/ETA) • Search and Rescue Coordinator • Launch 3 Helicopters (cancel if not needed) • See additional resource notification for "All Categories" 			
<u>NOTIFICATIONS FOR ALL CATEGORIES:</u> <ul style="list-style-type: none"> • KCFD#1 Rescue Unit • KVH House Supervisor 509-899-4151 / 509-933-8739 • Bus • Red Cross • Coroner as needed 			

ON SCENE REMINDERS

IC or On-scene Responders – Cancel or increase # of units & **HELICOPTERS** per need

Agency Move-up Options: KCFD#1, HD#2, Yakima FD, KCFD#6, Roslyn FD

Additional Manpower/Resource Options: Search & Rescue, Community Emergency Response Teams (CERT), CWU EMS Students, King or Yakima County MCI Trailer

Special Resource Considerations: Department of Transportation, Public Works, Public Health Dept. (Environmental Health), Hospital Decontamination Unit, Department of Ecology, Mental Health, BNSF, ARES/RACES

Mass Casualty – MCI HD#1-B (yellow)

RESPONSE AREA: KCHD#1, West of City of Kittitas, South of Lauderdale Intersection, East of Elk Heights MP93, & all adjacent areas

RESOURCE GOALS: As soon as initial number of patients is confirmed; resource notification is based on this number. MCI activation may be requested for fewer patients. Once minimum goals are met, additional resources need to be requested. Entrapment will be assumed at all MCI's unless directed otherwise. Resources are in addition to initial dispatch.

<u>15 or less PATIENTS:</u>	<u># EMS Units</u>	<u># FIRE/AID Units</u>	<u>AIR AMB.</u>
<ul style="list-style-type: none"> • 5 EMS transport units • 2 Fire units • 3 LE units • Launch 1 Helicopter (cancel if not needed) • See additional resource notification for “All Categories” 	1) KVFR Medic 2-3 units 2) HD#2 Medic 3) A-731 4) A-511 5) Yakima (AMR/ALS) 1-4 units 6) HD#2 Medic 7) A-761 8) Sunnyside Medic Unit 9) King or Yakima Cty. (Request # of units still needed. Request call back to confirm # sending & ETA)	1) KVFR Aid 1-5 Engines 1-2Extrication 2) KCFD#1 Aid Engine Rescue Unit 3) FD#7 Engine Extrication 4) CEFD Engine	1) ALNW 2) LifeFlight 3) MEDEVAC
<u>16-30 PATIENTS:</u> <ul style="list-style-type: none"> • 7 EMS transport units • 3 Fire units • 4 LE units • Launch 2 Helicopters (cancel if not needed) • See additional resource notification for “All Categories” 			<u>Radio Channels</u> FIRE OPS FIRE PAGE FIRE TAC 3 FIRE TAC 5 FIRE MANASH LAW MAIN LAW ALT LAW MANASH TAC 1 LAW TAC 2 LAW TAC 4 LERN SAR HEAR OSCCR RED NET LOCAL WX
<u>31 or more PATIENTS:</u> <ul style="list-style-type: none"> • 10 EMS transport units (medic strike team) • 4 Fire units • 5 LE units • Request Yakima County MCI Trailer (w/ETA) • Search and Rescue Coordinator • Launch 3 Helicopters (cancel if not needed) • See additional resource notification for “All Categories” 			
<u>NOTIFICATIONS FOR ALL CATEGORIES:</u> <ul style="list-style-type: none"> • KCFD#1 Rescue Unit • KVH House Supervisor 509-899-4151 /509-933-8739 • Bus • Red Cross • Coroner as needed 			

ON SCENE REMINDERS

IC or On-scene Responders – Cancel or increase # of units & **HELICOPTERS** per need

Agency Move-up Options: KCFD#1, KCFD#6, KCFD#7, HD#2, Roslyn Fire Dept.

Additional Manpower/Resource Options: Search & Rescue, Community Emergency Response Teams (CERT), CWU EMS Students, King or Yakima County MCI Trailer

Special Resource Considerations: Department of Transportation, Public Works, Public Health Dept. (Environmental Health), Hospital Decontamination Unit, Department of Ecology, Mental Health, BNSF, ARES/RACES

Mass Casualty -- MCI HD#1-C (pink)

RESPONSE AREA: KCHD#1, Vantage and HD#1 East of City of Kittitas, & all adjacent areas

RESOURCE GOALS: As soon as initial number of patients is confirmed; resource notification is based on this number. MCI activation may be requested for fewer patients. Once minimum goals are met, additional resources need to be requested. Entrapment will be assumed at all MCI's unless directed otherwise. Resources are in addition to initial dispatch.

<p><u>15 or less PATIENTS:</u></p> <ul style="list-style-type: none"> • 5 EMS transport units • 2 Fire units • 3 LE units • Launch 1 Helicopter (cancel if not needed) • See additional resource notification for “All Categories” 	<p><u># EMS Units</u></p> <p>1) KVFR Medic 2-3 units</p> <p>2) HD#2 Medic</p>	<p><u># FIRE/AID Units</u></p> <p>1) KVFR Aid 1-4 Engines 1-2Extrication</p>	<p><u>AIR AMB.</u></p> <p>1) ALNW</p> <p>2) LifeFlight</p> <p>3) MEDEVAC</p>
<p><u>16-30 PATIENTS:</u></p> <ul style="list-style-type: none"> • 7 EMS transport units • 3 Fire units • 4 LE units • Launch 2 Helicopters (cancel if not needed) • See additional resource notification for “All Categories” 	<p>3) Mattawa Ambulance</p> <p>4) Quincy Ambulance</p> <p>5) Yakima (AMR/ALS) 1-3 units</p>	<p>2) FD#4 Aid Engine</p> <p>3) KCFD#1 Aid Engine Rescue Unit</p>	<p><u>Radio Channels</u></p> <p>FIRE OPS</p> <p>FIRE PAGE</p> <p>FIRE TAC 3</p> <p>FIRE TAC 5</p> <p>FIRE</p> <p>MANASH</p> <p>LAW MAIN</p> <p>LAW ALT</p> <p>LAW</p> <p>MANASH</p> <p>TAC 1</p> <p>LAW TAC 2</p> <p>LAW TAC 4</p> <p>LERN</p> <p>SAR</p> <p>HEAR</p> <p>OSCCR</p> <p>RED NET</p> <p>LOCAL WX</p>
<p><u>31 or more PATIENTS:</u></p> <ul style="list-style-type: none"> • 10 EMS transport units (medic strike team) • 4 Fire units • 5 LE units • Request Yakima County MCI Trailer (w/ETA) • Search and Rescue Coordinator • Launch 3 Helicopters (cancel if not needed) • See additional resource notification for “All Categories” 	<p>6) Moses Lake Amb.</p> <p>7) Ballard/LL Ambulance</p> <p>8) Wenatchee or Yakima:</p>		
<p><u>NOTIFICATIONS FOR ALL CATEGORIES:</u></p> <ul style="list-style-type: none"> • KCFD#1 Rescue Unit • KVH House Supervisor 509-899-4151 / 509-933-8739 • Bus • Red Cross • Coroner as needed 	<p>(Request # of units still needed. Request call back to confirm # sending & ETA)</p>		

ON SCENE REMINDERS

IC or On-scene Responders – Cancel or increase # of units & **HELICOPTERS** per need

Agency Move-up Options: KCFD#1, KCFD#7, HD#2, Yakima FD, KCFD#6, Roslyn FD

Additional Manpower/Resource Options: Search & Rescue, Community Emergency Response Teams (CERT), CWU EMS Students, King or Yakima County MCI Trailer

Special Resource Considerations: Department of Transportation, Public Works, Public Health Dept. (Environmental Health), Hospital Decontamination Unit, Department of Ecology, Mental Health, BNSF, ARES/RACES

Kittitas County Mass Casualty Incident Plan

(Revised 12-7-2017 & Map/Key Update 1-2018)
Minor form updates 10-2018

Contact Information:

Kittitas County EMS Division
Kittitas County EMS & Trauma Care Council
Jackson Horsley, MD, Medical Program Director
Cheryl Burrows, EMS Coordinator

(O) 509-674-2932

(C) 509-929-3247

kcems@outlook.com

PO Box 821

211 E. First St.

Cle Elum, WA 98922

<http://www.kittitascountyems.org>

Current electronic copy of Kittitas County MCI Plan is available at:

<http://www.kittitascountyems.org/traumacouncil.htm>