

Weekly Major Equity Indexes Charts Newsletter

June 19, 2017

The Weekly Equity Indexes Charts Newsletter provides Cornelius Luca's trade ideas, model signals, and absolute charts

© 2017 Luca Global Markets, LLC. All rights reserved. This content is provided as general information only and does not constitute investment advice or a representation that any investment, security or other product is suitable for any person. This content reflects the opinions only of the author and cannot be interpreted as advice.

This content is the intellectual property of Cornelius Luca. Any copying, distribution or redistribution of this content is expressly prohibited without the prior written consent of Cornelius Luca.

Cornelius Luca shall not be liable for any errors in the content, or for any actions taken in reliance thereon.

Trade Ideas

- G7: Long S&P 500 *while above* the 21-day exponential moving average
- G7: Long DAX *while above* the 21-day exponential moving average
- BRIC: Long India's BSE Sensex *while above* the 21-day exponential moving average

G7 Equity Indexes

Model Signals - Daily & Weekly

<i>G7 Index</i>	<i>Daily Model</i>	since	Daily Bias (> or < 21-day EMA)	Daily Risk	<i>Weekly Model</i>	since	Weekly Bias (> or < 21-week EMA)	Weekly Risk
S&P 500	L	19-Jun	bullish	bullish	L	26-May	bullish	slightly bullish
German DAX	L	16-Jun	slightly bullish	slightly bullish	L	19-Jun	bullish	bullish
UK FTSE	L	16-Jun	slightly bullish	slightly bullish	L	26-Jun	bullish	slightly bullish
France CAC	L	16-Jun	slightly bullish	slightly bullish	L	26-Jun	bullish	slightly bullish
Italy Borsa Italiana	L	16-Jun	sideways	neutral	L	26-Jun	bullish	slightly bullish

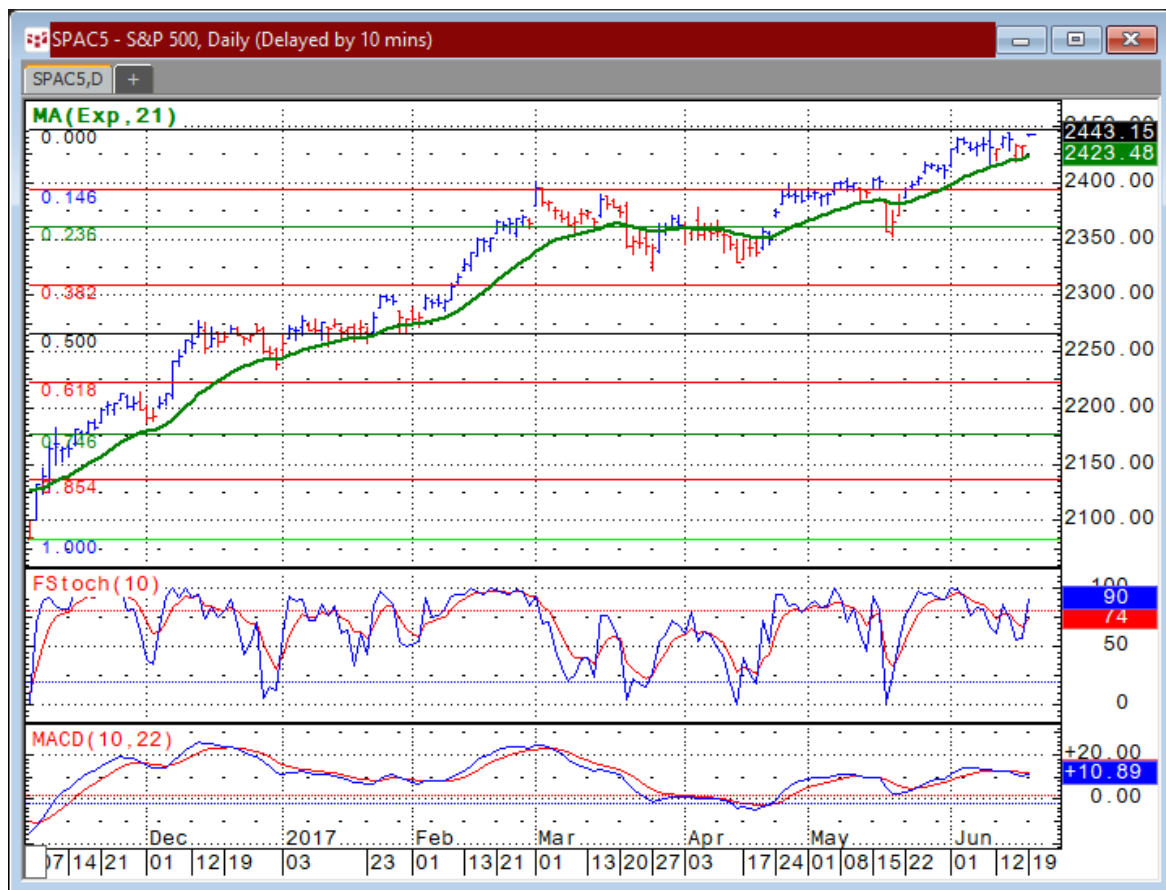
Source: Proprietary Luca Global Markets, LLC Model

S&P 500

Comment:

Long the S&P 500 while above the 21-day EMA

- The S&P 500 opens near record high following a choppy week
- It remains above its 21-day EMA
- The LGM model is long again
- Initial resistance: 2,446
- Further resistance: 2,476
- Immediate support: 2,423
- Further support: 2,353 & 2,322 & 2,305
- Fast stochastics: bullish
- MACD: slightly bearish >0



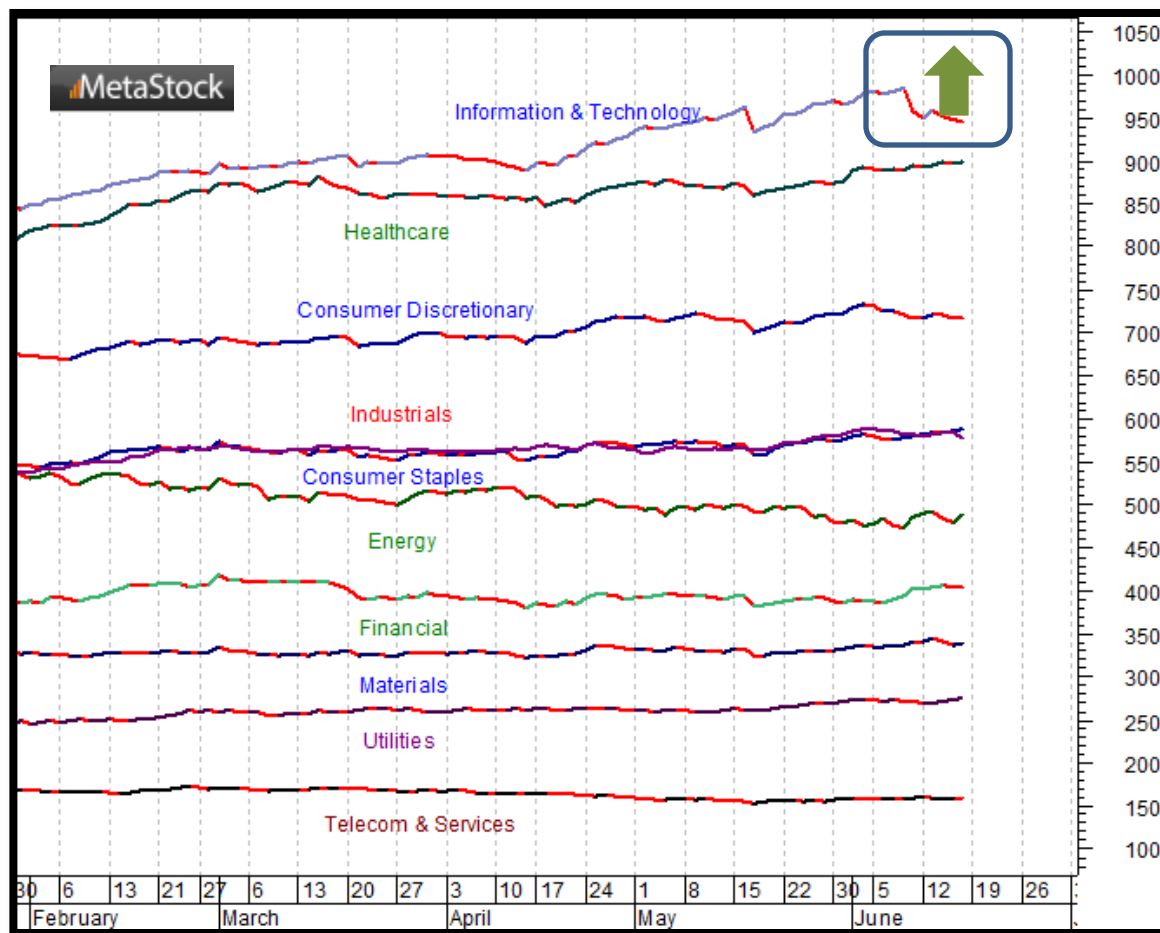
CQG Inc. © 2017 All rights reserved worldwide. <http://www.cqg.com>

Mon Jun 19 2017 09:38:55, CQG 17.12.860

S&P 500 Sectors

Comment:

The Information & Technology sector was under pressure, but it's time to resume its strength.



G7 Equity Index Trade Idea

Comment:

Long DAX while above the 21-day EMA

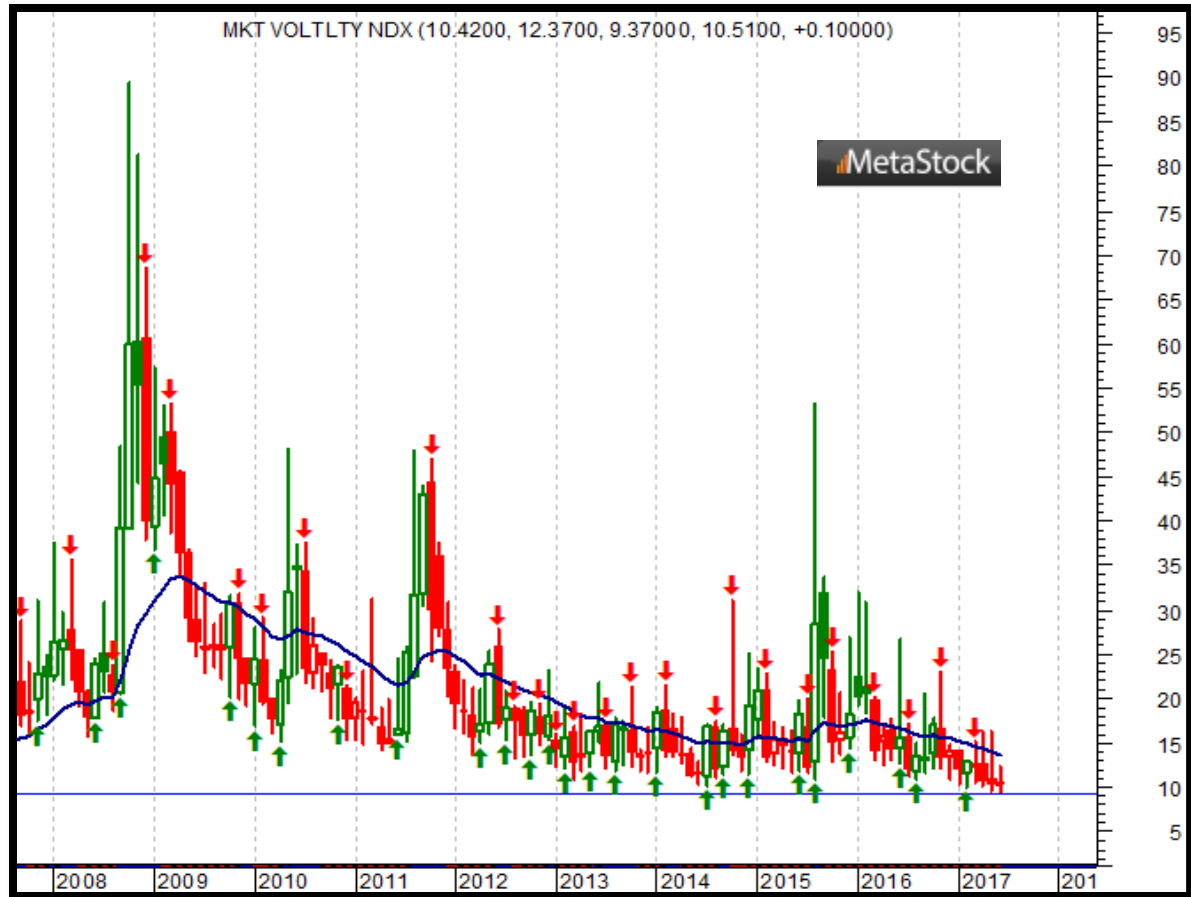
- The DAX resumed its gains and trades near record highs
- Initial resistance: 12,921
- Further resistance: 13,107
- Immediate support: 12,711
- Further support: 12,490 & 12,375
- Fast stochastics: slightly bullish



S&P 500 - VIX

Comment:

The VIX remains at significant & dangerous lows!



BRIC Equity Indexes

Model Signals - Daily & Weekly

<i>BRIC Index</i>	<i>Daily Model</i>	since	Daily Bias (> or < 21-day EMA)	Daily Risk	<i>Weekly Model</i>	since	Weekly Bias (> or < 21-week EMA)	Weekly Risk
Brazil	L	19-Jun	bearish	slightly bullish	S	17-May	slightly bearish	slightly bearish
Russia	S	13-Jun	bearish	bearish	S	17-May	bearish	bearish
India	L	19-Jun	bullish	slightly bullish	L	19-Jun	bullish	slightly bullish
China-Shanghai	L	19-Jun	slightly bullish	slightly bullish	L	19-May	bullish	slightly bullish

Source: Proprietary Luca Global Markets, LLC Model

BRIC Equity Index Trade Idea

Comment:

Long BSE Sensex while above the 21-day EMA

- The BSE Sensex resumed its gains after 8 days of consolidation & trades near its record high
- It trades above its rising 21-day
- Initial resistance 31,430
- Further resistance: 32,100
- Immediate support: 31,183
- Further support: 30,745 & 30,020
- Fast stochastics: bullish



How to Use the Heat Map

Bias: If the Candle > 21-period EMA = bullish
 If the Candle < 21-period EMA = bearish
 If the Candle around 21-period EMA = sideways

Long or Short	Commodities	Since when		Risk: Bullish or Bearish Candle as of Monday am EST					
		Daily Model	since	Daily Bias (> or < 21-day EMA)	Daily Risk	Weekly Model	since	Weekly Bias (> or < 21-day EMA)	Weekly Risk
Energy	Crude (CLc1)	S	27-Apr	bullish	slightly bullish	L	23-Mar	slightly bearish	slightly bullish
	Brent (LCOc1)	L	21-Apr	slightly bullish	slightly bullish	L	6-Apr	slightly bearish	slightly bullish
	Natural gas (NGc1)	S	23-Apr	bearish	bearish	S	20-Apr	bearish	slightly bearish
	Palm oil (FCPOc1)	L	24-Apr	sideways	neutral	S	20-Apr	slightly bearish	slightly bearish
Metals	Gold (GCc1)	S	24-Apr	bearish	bearish	S	20-Mar	slightly bearish	slightly bearish
	Silver (SIc1)	S	22-Apr	bearish	bearish	S	24-Apr	bearish	bearish
	Platinum (PLc1)	S	20-Apr	bearish	bearish	S	20-Mar	bearish	slightly bullish
	Copper (HGc1)	L	24-Apr	slightly bearish	slightly bullish	S	24-Apr	slightly bearish	slightly bearish
Softs	Coffee (KCN5)	L	24-Apr	sideways	neutral	L	24-Apr	slightly bullish	slightly bullish
	Cocoa (LCCN5)	L	23-Apr	bullish	bullish	L	13-Apr	bullish	bullish
	Soy meal (SMN5)	S	24-Apr	bearish	slightly bearish	S	24-Apr	bearish	slightly bearish
	Wheat (WN5)	S	24-Apr	bearish	slightly bearish	S	24-Apr	bearish	bearish
	Corn (CN5)	S	20-Apr	bearish	bearish	S	6-Apr	bearish	bearish

Source: Proprietary Luca Global Markets, LLC Model

L = long
 S = short