



*Good Beekeeping*



*Good Fellowship*



*Since 1948 Exploring the Wonderful World of Beekeeping Together*

## **The Bee Buzzer**

*Monthly Publication of the*

### **Northeastern Kansas Beekeepers' Association**

VOLUME 77, NUMBER 12

EDITOR: TIM MARSHALL

December 2025

#### **General Meeting**

**Monday, Dec 15th, 2025 (7:00 p.m.)**

K-State Research and Extension office  
11811 S. Sunset Dr., Olathe, KS

#### **Operation Christmas Party for our NEKBA members:**

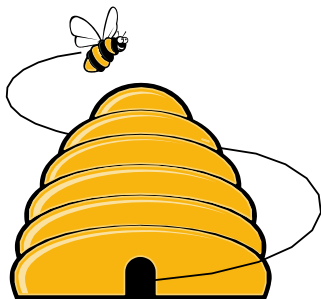
1. Please respond to the party via link (all who responded will get their name entered into a drawing for prizes at the party) <https://forms.gle/8BxydUxJkEqYYFD66>
2. Wear your Christmas Spirit
3. Bring a dessert to share

#### **December meeting outline:**

- Welcome Speech 7pm
- Draw names from RSVP list (prizes)
- Year in review
- Bingo
- Festive wear contest (prizes)
- Social hour
- Craft for members
- Craft for kids
- Photo-op
- Closing words - board member 8:30
- Clean up - all hands on deck

#### **Beelines**

##### **By President Cheryl Burkhead**



Elections were held at our club meeting this past month and I want to welcome our new officers. I'm excited to see many new faces on the board. Please give them some grace as they assume their new roles.

It's always fun to share all the bees' hard work with friends and family during the holidays. Gifts of honey are always a hit with all the special people in our lives. I hope you'll try your hand with additional products like comb honey, creamed honey, and infused honey. Perhaps you can render some beeswax and make candles, beeswax wraps, or use it in many different skin care products like soaps, lotions, and lip balms. Some beekeepers have even made mead. The possibilities are endless!

Sometimes, even with the best of management, we may lose a few colonies during the winter. If you lose a colony, I hope you will take the time to do a post-mortem exam. Even without brood, a lot of information can be gathered to ascertain what may have caused their demise. How large was the cluster? Were they in contact with honey? Moisture issues? Was there a queen? Any signs of predators visiting the hive? (Scratching at the entrance or scat) Any signs of robbing? (Chewed/torn comb & cells void of honey) Mites? You can collect 300

dead bees and do an alcohol wash to get an idea of mite numbers. Any mite droppings (guanine) in the empty brood frames? Sick bees may fly off to die on nicer days leaving very few bees in the colony. Repeated skunk visits may also dwindle the colony numbers sufficiently so that they cannot thermoregulate.

There's always a question on what to do with the frames. It's always a good idea to discard any old brood frames. Recent research indicates than even European Foulbrood can linger on surfaces for over a year. If you decide to reuse some of the frames of comb, I'd mark them and monitor for issues in those colonies receiving them. Comb with a lot of entombed pollen should be discarded. I usually will pop out the old foundation, salvage the frame, and pop in some new foundation in the spring to use for swarms and making increases.

Winter is here. Check your colony's food stores at least monthly and probably more often come late January as brood rearing commences. Whether you elect to feed small amounts of 2:1 syrup through a contact feeder, apply fondant, or use a candy board - that is your decision, just do not let them starve. I urge you to try all methods to see what works best but make sure to feed your bees if needed. Monitor entrances throughout the winter and keep them cleaned out so that the bees can come and go freely.



### 2025 & 2026 Meeting Dates:

- Dec 15<sup>th</sup>, Monthly Meeting in Olathe (JOCO Extension Office)
- \*Jan 26<sup>th</sup>, Monthly Meeting in Olathe (JOCO Extension Office)
- Feb 14<sup>th</sup>, Mar 7, Mar 21<sup>st</sup> Beginning Bee Classes –pencil in the dates
- Feb 21<sup>st</sup>, Year 2 & Beyond Class in Olathe (JOCO Extension Office)
  - Mar 16<sup>th</sup>, Monthly Meeting in Olathe (JOCO Extension Office)



### Ol' Bee Gal

You all know that I'm nearly a fossil and new technology is a challenge for me. I Googled, "What makes a good beekeeper?" and AI provided a pretty darn good answer: A good beekeeper is patient, observant, calm, and continuously learning....

The bees will teach us so much if we just let them. They work in their own timeframe. We can want them to draw wax but unless the conditions are right, there is no coaxing them to do it, **patience** is required. We will know when the conditions are right if we are

**observant** enough to notice the signs within the hive, abundant brood, abundant food, and little deposits of white wax flakes along the edges of the frames.

When we go into the hive, we need to work with deliberate purpose and **calmness**. Smooth and fluid movements will not excite the bees and allow us to work through the frames doing minimal damage to the bees. Using a smoker helps the bees remain calm throughout the inspection—when the bees are calm, it's much easier for the beekeeper to remain calm!

The world of beekeeping is continuously changing for us. The bees themselves have changed little over the millennia, but their environment has changed and the jobs we are expecting them to accomplish have changed. To meet the needs of these changing times, we need to be **continuously learning** about our honey bees. That's what this organization is about: helping new and seasoned beekeepers identify the best practices for beekeeping in our northeastern Kansas area. Hive management, pest and disease control, nutrition needs (and the flowers that provide that nutrition), and good community awareness—being good stewards of bee husbandry. We are bee ambassadors. What the local world knows about bees is abysmally little and nearly every day we have the opportunity to share some of the importance of honey bees and, more importantly, create an environment that is beneficial and supportive of all our pollinators. I'm going to be helping our new

Program Chair, Yana Magruder, along with Jess Popp, plan our programs this year. If you have program ideas, questions, or random thoughts you'd like to see incorporated into one of our meetings, just drop us a line.

New Year's resolutions are not one of my strengths, but I would like to suggest a couple. We should all keep a beekeeping calendar. Note the date you were in the hive, what you saw and any manipulations you did. Flowers blooming. First swarm cell. Maybe this is a journal not a calendar but looking back the next year on what you observed is really interesting. Do this for several years and you see amazing patterns. My other suggestion for a resolution, get involved. Become part of our group. Raise your hand, join the team, ask questions, visit our hives, and you'll learn more than you might realize. Keep on doing what you're doing, and you get more of what you got....do something new and be surprised!

Please come join us this month to celebrate a successful year of beekeeping and to kick off 2026. Yana has planned a wonderful holiday event for us with games, prizes, music, and lots of fun. Bring your favorite honey laced holiday treat along with the recipe. I'll use this space next month to share some of the deliciousness. Merry, happy, joyous, honey-sweet New Year. **Becky Tipton**

#### **SUBSCRIBE TO A MONTHLY BEE MAGAZINE. STAY INFORMED.**

[Bee Culture Magazine \(link\)](#)

[American Bee Journal \(link\)](#)

Use the links to subscribe directly...annual subscription rates under \$6 per month for both!  
This is fantastic information right at your fingertips. As part of your beekeeping experience, it's important to be up to date with the trends in bee biology, honey processing, the industry, and much more!



#### **ASK QUINBY & REMI**

**Dear Quinby and Remi:** Do you have any ideas for some quick, simple holiday gift ideas?

**Quinby and Remi answer:** Our house has smelled so good the last few weeks! Cecil has been cleaning beeswax and making candles and ornaments and pinecone fire starters! Joli has been making lotion bars, lip balm, and nail butters.

Jo Patrick did a great presentation on making the pinecone fire starters- very easy! She suggested getting some pinecones, tying some wick around them, and dipping them and the wick in beeswax- let them cool and you are done! Joli and Cecil sold them for \$2 each!

Another idea is to fill a cute jar, half full of pecans (or your favorite nuts) and fill the jar with honey. This great gift is great for ice cream or pancakes.

There is still some time to make some honey infused with cinnamon sticks. In either a honey bear or a cute glass jar put in several cinnamon sticks. Then place in a warm area or a sunny window and they should be ready by the holidays. A warm area is the key to this!

You could also make some lotion bars. You can get all the ingredients locally. Joli used equal parts of beeswax (a little heavier on the beeswax), shea butter, cocoa butter, and coconut oil. Melt in a double boiler, add fragrance if wanted, pour into molds. As it cools, stick your molds/bars in the freezer. After they are cooled, take them out and let them come to room temperature and put them in a tin.

**Dear Quinby and Remi:** I know Joli loves to read fiction that has beekeeping as a theme. Does she have any suggestions for a gift for a beekeeping friend who also likes fiction?

**Quinby and Remi answer:** You are right, she loves to read fiction. She suggests the following:

The Secret Life of Bees by Sue Monk Kidd

The Music of Bees by Eileen Garvin (loved this)

The Beekeeper of Aleppo by Christy Lefteri

A Hive of Suspects by Sheila Pim-a mystery about people in a beekeeping club!

The Honey Bus by Meredith May (loved this)

Anything by Abigail Keam- a beekeeper and mystery writer. Death by a Honey Bee was the first one.

Honey and Dust by Piers Moore Ede (loved this)

Plan Bee by Hannah Reed- a cozy mystery series, but I enjoyed it!

The Return by Nicholas Sparks (fun to find all the misinformation about bees, not very good research!)

Keeper of the Bees by Gene Stratton-Porter

The Language of the Bees by Laurie King

An Oregon Honeycomb Mystery (series) by Nancy Coco- just ordered! Death Bee Comes Her, A Matter of Hive and Death



### **The NEKBA Bee Yard**

They're being watched and cared for during the winter. Events will be available as the weather warms up!

### **Tips for December**

- Renew your membership to NEKBA. Keep "The Buzzer" coming. It's a great source of information!
- Make sure that your hives have heavy bricks on them to keep our Kansas winds from blowing them off.
- Monitor food stores in each hive. Check your hives by lifting the back of the hive - are they light?
- Monitor hives for flight on warm days (sunny and above 50 degrees) and check for dead-outs throughout the winter.
- Order woodenware for yourself for Christmas so you can spend the winter putting new equipment together and getting it painted.
- Heavy snows can block entrances preventing bees from necessary cleansing flights. Brush snow from the entrance of the bee hive.
- Plan some honey gift ideas for friends and co-workers.
- Make beeswax candles and ornaments for holiday gifts. Try your hand at soaps, lotions, and lip balms and other value-added products.
- Subscribe to a monthly bee magazine and stay informed! Links to ABJ and Bee Culture in this newsletter.



### **Military/Veterans Apprenticeship Program**

A Call for Mentors in the Leavenworth Area:

As many of you know, NEKBA offers a Military Scholarship Program that provides veterans with a two-year NEKBA membership, free introductory beekeeping classes, a hive, a package of bees, protective equipment, FunDay tickets, and a mentor. Veterans

accepted into the program are required to attend the beginning beekeeping course, attend at least eight monthly meetings to continue their education, and give a presentation to the association at the end of the year to successfully complete the program and keep their bees.

This year, we received applications from three highly motivated veterans who all reside in Leavenworth. I have interviewed each of them, and NEKBA is prepared to support all three; however, we need local mentors to make this possible. Ideally, we would pair each veteran with their own mentor, but one mentor supporting all three would also work (One mentor supporting all three could open some interesting possibilities). I understand that the idea of mentoring may feel overwhelming, but it is not as demanding as it may seem. I, along with other board members, will be only a phone call away for guidance. Historically, mentors are needed

on-site only a handful of times each year—typically during major events such as hiving a package, conducting the first inspection, making splits, and performing varroa mite checks.

Mentorship is the key to the success of the Military Scholarship Program. Think back to your first year and how valuable it was to have someone you could call with questions. Without mentors, we cannot offer this opportunity to these three veterans.

To help sweeten the pot, NEKBA will also provide FunDay tickets to mentors who step up to support these veterans.

If you're interested in mentoring, please reach out to me at [babradley82@gmail](mailto:babradley82@gmail.com) or call me at 785-248-1005! Together, we can help these new beekeepers thrive.

**Buck Bradley, Military/Veteran Appr. Liaison**

## Honey Plants



Have the seed catalogs started appearing in your mailbox yet? Their arrival reminds us to review the past year's nectar and pollen sources in your area. They can guide us on how to fill in the bloom gaps and keep a continual flow of nectar and pollen food sources. There is nothing like a colorful seed catalog to brighten a dreary winter day.

The best time to sow native plant seeds and most perennials, is November through February. This can be done by sowing directly in or on the soil and in seed starting kits. If you use pots and potting soil or a seed starting kit, plant the seeds, water well, and leave the pots outdoors. I like to put these in translucent bags to keep pests out. No need to water again until the seeds germinate. Your seeds will germinate when the time is right. At germination, remove the bags and water as needed. A less labor-intensive method is to sow the seeds by throwing them on top of snow and letting nature do the rest. When selecting native seeds, it is important to choose and buy locally collected seeds or from similar growing environments. Choosing floral sources that will thrive in our area means less watering and care. Plants must be tough to thrive in NE KS. They must endure extreme heat, potential drought, our heavy clay soils, and frigid winter temperatures that dip into the teens.

There are a few seed suppliers in our area. Some offer seeds in bulk while others sell in smaller quantities. Buffalo Brand Sharp Brothers Seed is in Healy, KS. They have several bee and butterfly mixes available in bulk. This is great if you have a large area or acreage to plant. <https://sharpseed.com>

Prairie Legacy Inc. is in Nebraska. This small company has grown over time and will create custom blends of seeds to suit your needs. They also sell plant species bare root. Seed packets come in a variety of assorted sizes. I have purchased seed from them in the past and received excellent customer service. They are a good source for Wingstem seeds. Wingstem is easy to grow from seed and will bloom in August-September when little else is blooming. <https://prairielegacyinc.com/>

Missouri Wildflowers, <https://mowildflowers.net/>, is located near Jefferson City, MO. They sell both seeds and plants. I encourage you to request their catalog. It contains a great deal of information about plants that different pollinators favor, growing conditions, time of bloom, and colorful pictures. They also provide excellent customer service. I have bought Aster seeds from them on several occasions. Missouri Wildflowers have pledged to only harvest seed locally and on property where they have been given permission to harvest.

The Buffalo Seed Company offers seeds collected from Eastern Kansas and Western Missouri. This Shawnee, KS based family-owned business offers heirlooms, natives, and medicinal seeds packaged to sell to home gardeners. If in Lawrence, KS, a selection of their seed is stocked at Cottin's Hardware, 1832 Massachusetts St. <https://www.thebuffaloseedcompany.com/>

For agricultural and conservation seeds, Star Seed, Inc., at [www.gostarseed.com](http://www.gostarseed.com) offers a large inventory of wildflowers, cover crops, and food plot seeds for those planting acreage. They are in Osborne, KS.

Another family-owned business is Feyh Farm Seed Co., in Alma, KS. They sell a variety of wildflowers and cover crop seed by the pound. <https://feyhfarmseed.com/>

A big event that draws a crowd is the Kaw Valley Seed Fair. It will be in Building 21, Douglas County Fairgrounds, 2120 Harper St., Lawrence, KS. This free event is scheduled for Feb. 14, 2026. Visitors can bring seeds they have harvested, if they have them, and swap with others at the free seed tables. There will be demonstrations about seed sowing and seed harvesting throughout the day. Local vendors will be selling merchandise.

Lastly, a few public libraries offer a seed library or seed swap. The Leavenworth Public Library offers this service plus growing guides and seed saving tips from K State Research and Extension. Watch for a current list of available seeds, for 2026, on their website, <https://leavenworthpubliclibrary.org/seed-library/> The Lawrence Public Library, 707 Vermont St., Lawrence, KS, offers a seed library from February 7 until the end of April. The Kansas City, KS Public Library has a list of fruits and vegetables, flowers, and herbs available at <https://www.kckpl.org/seed-library/list>

While your bees are snug in their hives, now is a good time to be looking forward to spring blooms.

**Jo Patrick, Honey Plants Chairman**

## 2026 Beekeeping Classes

Kristi Sanderson, Special Events Coordinator (classes) has set the 2026 dates for the Beekeeping Classes. The details are still being worked out so watch the NEKBA website for information at [www.nekba.org](http://www.nekba.org) and the next Buzzer.

### Year 2 and Beyond:

February 21<sup>st</sup> Johnson County Extension Office, Olathe KS

### Beginning Classes:

February 14 Dreher Bldg. Lawrence KS Douglas Co Fairgrounds

March 7 Wyandotte County Extension Office KCKS

March 21 Johnson County Extension Office Olathe KS



# **Northeastern Kansas Beekeepers Assoc. Enrollment for 2026**

Please include your selection and contact information below

## **2026 Year-2 & Bee-Yond Class (Feb.21, Saturday-Olathe, KS location)**

Name(s) of those attending:

---

---

## **2026 Bee-ginning Beekeeping Class (Feb.14, Saturday – Lawrence, KS location)**

Name(s) of those attending:

---

---

## **2026 Bee-ginning Beekeeping Class (Mar.14, Saturday-Kansas City, KS location)**

Name(s) of those attending:

---

---

## **2026 Bee-ginning Beekeeping Class (Mar.21, Saturday – Olathe, KS location)**

Name(s) of those attending:

---

---

Class registrations include annual NEKBA membership and delivery of the monthly newsletter via email.

### **Your contact information:**

Name: \_\_\_\_\_

Address: \_\_\_\_\_

City, State: \_\_\_\_\_

Phone: \_\_\_\_\_

Email: \_\_\_\_\_

Enrollment at [www.nekba.org](http://www.nekba.org) via PAYPAL  
and at <https://nekba.square.site> .

Credit or debit bank cards accepted.

Questions?: Kristi Sanderson Email:

[sandersonk09@gmail.com](mailto:sandersonk09@gmail.com) Phone: 913-768-4961

### **Starting year 2-&-Beyond**

*This class is for you. Requeen, making splits,  
maintaining healthy hives. Anyone having hives  
less than 5 years will learn valuable information.*

**February 21, 2026. Johnson County  
Extension Office – Olathe, KS 11811 S  
Sunset Dr, Olathe, KS**

X \$50 each = \_\_\_\_\_

*Beginning Bee Classes – three opportunities!  
Everything you need to know to get started in  
beekeeping in NE Kansas- BEST PRACTICES for our  
area. Excellent for newer beekeepers with 3 years  
of experience or less.*

**1) February 14, 2026 Douglas County  
Fairgrounds 2110 Harper St, Lawrence, KS**

X \$50 each = \_\_\_\_\_

**Or 2) March 14, 2026, Wyandotte County  
Extension Office – Kansas City, KS 1216 N  
79th St, Kansas City, KS**

X \$50 each = \_\_\_\_\_

**Or 3) March 21, 2026, Johnson County  
Extension Office – Olathe, KS 11811 S  
Sunset Dr, Olathe, KS**

X \$50 each = \_\_\_\_\_

**Total Submitted** \_\_\_\_\_

**Complete print form & mail check payment to:**  
NEKBA, Attn Robert Burns, Treasurer  
7601 W. 54<sup>th</sup> Ter., Shawnee Mission, KS 66202

## NORTHEASTERN KANSAS BEEKEEPERS' ASSOC. 2026 MEMBERSHIP APPLICATION

NAME \_\_\_\_\_

ADDRESS \_\_\_\_\_

CITY \_\_\_\_\_ STATE \_\_\_\_\_ ZIP+4 \_\_\_\_\_

PHONE \_\_\_\_\_ Email Address \_\_\_\_\_

I would like to receive the newsletter, *The Buzzer*, by email Yes \_\_\_\_\_ No \_\_\_\_\_

Membership Northeastern KS Beekeepers per year (July-Dec. \$12.50) \$25.00 \_\_\_\_\_

Additional family members wanting voting rights \$1.00 per person \$1.00 \_\_\_\_\_

Additional family member's name \_\_\_\_\_

(Youth Membership (18 years of age or under) \$12.50 \_\_\_\_\_

Membership for Kansas Honey Producers Association \$25.00 \_\_\_\_\_

American Bee Journal (discounted rate through association) 1 year \$33.25 \_\_\_\_\_

Bee Culture Magazine (or subscribe online at [www.BeeCulture.com](http://www.BeeCulture.com)) 1 year \$40.00 \_\_\_\_\_

Scholarship / Military/Veteran's Appr. Donation \_\_\_\_\_

Total \_\_\_\_\_

**Make checks payable to: NEKBA or Northeastern Kansas Beekeepers Assn.**

Mail to: Robert Burns, 7601 W 54<sup>th</sup> Terr., Shawnee Mission, KS 66202 ph. 913-481-3504, [rburnshoney@gmail.com](mailto:rburnshoney@gmail.com)

**You may join, re-new, register, donate and pay online at [www.nekba.org](http://www.nekba.org)**

---

## MARKET PLACE

### MENTORING-SWEET PRAIRIE HONEY

Need help with your hives? -Spring inspections, installing packages, making splits, queen evaluation, diagnosis of pests and diseases, mite monitoring and treatment, etc. I can help you with your beekeeping needs! I am a certified master beekeeper with 30+ years of beekeeping experience. I will leave you with a written course of action after our session at your hives. Call or text 913-768-4961 or email Kristi Sanderson at [sandersonk09@gmail.com](mailto:sandersonk09@gmail.com) for pricing and appointment times.

---

### BEEKEEPERS.COM

[Beekeepers.com](http://Beekeepers.com) (Jordy's Honey Company) in Lenexa, KS. Beekeepers.com is your only local full-service beekeeping store. We carry a full line of Beekeeping Supplies, Protective Clothing, Bottles, Bee Packages, Nucs and Queens. Visit our website [Beekeepers.com](http://Beekeepers.com), to view our entire line of beekeeping supplies. You can also shop in-person at our store in Lenexa. We ship queens directly to YOU! Order at [QueenBees.com](http://QueenBees.com). Queens available March - October. Our hours are Monday-Friday 9:00-4:00, Saturday 9:00-12:00. You can find our honey at The Overland Park Farmers Market. **Robert Hughes**, 14054 W 107<sup>th</sup> St, Lenexa, KS 66215, 913-681-5777 or [email Info@Beekeepers.com](mailto:email Info@Beekeepers.com)

---

### COTTIN'S HARDWARE & RENTAL

Cottin's stocks a full line of beekeeping equipment year-round including items manufactured by Harvest Lane Honey, Little Giant, and Bug Baffler. Products include hives, supers, frames, foundations, extractors, tools, and protective apparel. We also stock a full line of Home Brewing Mead Making supplies. Located in Lawrence, KS at 1832 Massachusetts Street (South of Dillon's). We are open Monday - Friday 7:30 am - 6:00 pm, Saturday 8:00 am - 5:00 pm, and Sunday 10:00 am - 5:00 pm. You can follow us on Facebook, Instagram and Twitter. Call us at 785-843-2981 or email us at [hardware@sunflower.com](mailto:hardware@sunflower.com).

---

## CB'S HONEY

CB's Honey offers pure raw Kansas honey available in 5 gal buckets. Grafted queens and queen cells, and a limited number of nucs/packages. [CB's Honey | Facebook](#). Located just SE of Topeka. 4521 SE 61<sup>st</sup> Street, Berryton, KS 66409. Call or text Cheryl Burkhead at 785-224-9077 or [cherylbhoney@gmail.com](mailto:cherylbhoney@gmail.com)

---

## CEDAR RIDGE BEES

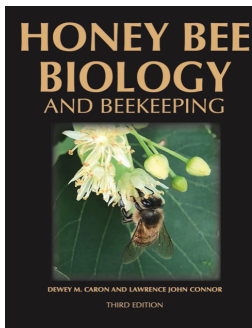
5 Frame Nucs for Sale. We are your local Premier Bee Products Dealer specializing in plastic foundation made entirely in the U.S.A. We sell bucket feeders and other bee equipment. Call or text Philip Knaus at 785-581-4216 or contact us at [cedarridgebeehives@gmail.com](mailto:cedarridgebeehives@gmail.com) - Check out our bees and products at [www.cedarridgebees.com](http://www.cedarridgebees.com) Cedar Ridge Bees 585 N 500 Rd, Overbrook, KS 66524.

---

## T CREEK BEES AND HONEY – Tecumseh/Berryton, KS

Tecumseh Creek winds its way through the home yard lending its name to the brand. Located between Lawrence and Topeka, T Creek offers 5-frame nucs, online honey sales, custom honey packing, wholesale delivery to the Topeka / Lawrence area, 5-gallon buckets of honey, and drop-shipping wholesale service to rural grocery stores and agritourism destinations. Visit [www.tcreekbees.com](http://www.tcreekbees.com) Email: [tcreekbees@gmail.com](mailto:tcreekbees@gmail.com) or find the bees on Facebook. Order 2026 5-frame nucs by visiting the website and completing the nuc order form. Owner: Tim Urich. LLC in the State of Kansas and licensed by Kansas Dept of Ag.

---



**Honey Bee Biology and Beekeeping, Third Edition, Dewey M. Caron and Lawrence John Connor,**

**\$90 postage included.** *This book should stay on the dashboard of every beekeeper's truck. It's that good, and that necessary. Kim Flottum, Bee Culture.* This comprehensive textbook easily replaces many beginner books while adding comprehensive details of bee biology essential to becoming a successful beekeeper and student of the honey bee. First released in 1999, *Honey Bee Biology and Beekeeping* is widely accepted as a major textbook of Apiculture (beekeeping).

Beekeepers and bee clubs use it to teach other beekeepers. Universities use it to teach college students bee biology and beekeeping. It concentrates on the 'why', 'how' and 'when' of beekeeping. It explains bee and beekeeping basics in a manner meaningful to people who lack an extensive background in biology. Yet it is not over-simplified and provides a meaningful source of beekeeping information for the informed beekeeper. The Third Edition has been carefully edited, updated, and expanded to 480 pages. New chapters have been added, as have colorful new graphics and photographs. The Glossary has also been expanded. **Wicwas Press LLC Kalamazoo, MI 49001 - [www.wicwas.com](http://www.wicwas.com)**

---

**The Association does not endorse nor evaluate the advertisements, products, or services offered in the Buzzer.**

Northeastern Kansas Beekeepers Association  
Robert Burns, Treasurer  
7601 W 54<sup>th</sup> Terr  
Shawnee Mission, KS 66202-1129

## Address Service Requested

### Meeting

Monday, Dec 15<sup>th</sup>, 2025 – Johnson County Extension Office

### *The Northeastern Kansas Beekeepers' Association*

Membership is open to anyone interested in bees or bee culture. Dues are \$25.00 per calendar year (December 31-December 31) for the first in the family joining. Those joining in July or later in the year may pay \$12.50 for ½ year. Additional members of a family wanting voting privileges shall be assessed dues at \$1.00 per year. Youth memberships (18 years of age and younger) are \$12.50 per year. Please submit new memberships and renewals to the treasurer or on-line at [www.nekba.org](http://www.nekba.org).

*The Bee Buzzer* is the official publication of the Northeastern Kansas Beekeepers' Association, Inc. and is published monthly. Commercial ads are accepted in the newsletter for a fee; non-commercial ads by paid members are accepted & are free.

The library of the association is free to all members. Books may be checked out at the meetings and kept for a period of 30 days. The bee publications, *The American Bee Journal* and *Bee Culture* can be subscribed to through the treasurer or on-line. Only *The American Bee Journal* is offered at a discount through the association.

The Association meets each month, generally on the third Monday at 7:00 p.m. except during the months of January and July. This is a non-profit organization; elected officers serve without pay. Everyone is invited to attend the meetings. Check *The Bee Buzzer* or website at [www.nekba.org](http://www.nekba.org) each month for the actual date, time, and location. If the weather is bad, call an officer or check the website to find out if the meeting will be held or cancelled.

#### 2025 Officers

President: <b>Cheryl Burkhead</b> , 4521 SE 61st St., Berryton, KS 66409 <a href="mailto:cbfritz@aol.com">cbfritz@aol.com</a>	785-224-9077
1st VP (Program Chair): <b>Matt Brandes</b> , 4741 Highway K 68, Wellsville, KS 66092 <a href="mailto:matthew@n523rv.com">matthew@n523rv.com</a>	913-706-3087
2nd VP (Librarian): <b>Michael Hewitt</b> , 9221 SE Berryton Rd, Berryton, KS 66409 <a href="mailto:garlicranch69@gmail.com">garlicranch69@gmail.com</a>	785-230-0827
3rd VP (Honey Plants): <b>Jo Patrick</b> , 611 E Sheridan St., Olathe, KS 66061 <a href="mailto:brian-patrick@sbcglobal.net">brian-patrick@sbcglobal.net</a>	913-645-8947
Secretary: <b>Elaine Ellenz</b> , 17650 W 113 <sup>th</sup> St., Olathe, KS 66061 <a href="mailto:elaineellenz@gmail.com">elaineellenz@gmail.com</a>	913-515-1607
Treasurer: <b>Robert Burns</b> , 7601 W 54 <sup>th</sup> Terr., Shawnee Mission, KS 66202 <a href="mailto:rburnshoney@gmail.com">rburnshoney@gmail.com</a>	913-481-3504
Youth Scholarship Chair: <b>Dale Spurlin</b> , 24964 160 <sup>th</sup> Ct., Leavenworth, KS 66048 <a href="mailto:LightedPathHoney@outlook.com">LightedPathHoney@outlook.com</a>	913-775-0997
Military/Veteran Appr. Liaison: <b>Buck Bradley</b> , 11 E 900 Rd., Baldwin City, KS 66006 <a href="mailto:buckusmc00@hotmail.com">buckusmc00@hotmail.com</a>	785-248-1005
Editor: <b>Tim Marshall</b> , 4736 Halsey St., Shawnee, KS 66216 <a href="mailto:flyinmonk@yahoo.com">flyinmonk@yahoo.com</a>	816-392-6854
Special Events Coordinators:	
(Classes): <b>Kristi Sanderson</b> , 1252 E Frontier Ln., Olathe, KS 66062 <a href="mailto:sandersonk09@gmail.com">sandersonk09@gmail.com</a>	913-768-4961
(Funday): <b>Joli Winer</b> , 19201 S Clare Rd, Spring Hill, KS 66083 <a href="mailto:heartlandhoneyks@gmail.com">heartlandhoneyks@gmail.com</a>	913-593-3562
Webmaster: <b>Robert Burns</b> , 7601 W 54 <sup>th</sup> Terr., Shawnee Mission, KS 66202 <a href="mailto:rburnshoney@gmail.com">rburnshoney@gmail.com</a>	913-481-3504

Visit on-line at [www.nekba.org](http://www.nekba.org). Save time. Join, re-new, or register.