

Rabbit Anti-STMN1/Stathmin1 Polyclonal: RC0303

Intended Use: For Research Use Only

Description: Stathmin1 or STMN1 is a ubiquitous cytosolic phosphoprotein proposed to function as an intracellular relay integrating regulatory signals of the cellular environment. The encoded protein is involved in the regulation of the microtubule filament system by destabilizing microtubules. It prevents assembly and promotes disassembly of microtubules. Alternatively spliced transcript variants encoding the same protein have been identified.

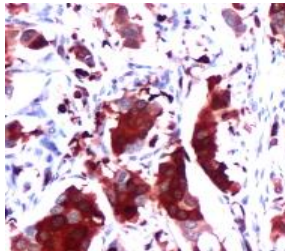
Specifications

Clone: Polyclonal
Source: Rabbit
Isotype: IgG
Reactivity: Human, mouse, rat, dog
Localization: Cytoplasm
Formulation: Affinity purified, in 10 mM PBS (pH 7.4), 10 mg/ml BSA, 0.02% sodium azide (NaN₃)
Storage: Store at 2°- 8°C. For longer periods of storage, store at -20°C. Avoid repeat freeze-thaw cycles
Applications: IHC, ELISA(P), WB
Package:

Description	Catalog No.	Size
STMN1/Stathmin1 Polyclonal Concentrated	RC0303	1 ml

IHC Procedure*

Positive Control Tissue: Tonsil, spleen, breast cancer
Concentrated Dilution: 25-100
Pretreatment: Citrate pH6.0, 15 minutes using Pressure Cooker, or 30-60 minutes using water bath at 95°-99°C
Incubation Time and Temp: 30-60 minutes @ RT
Detection: Refer to the detection system manual
* Result should be confirmed by an established diagnostic procedure.



Human breast carcinoma FFPE tissue stained with anti-STMN1 using DAB

References:

1. STMN-1 gene: a predictor of survival in stage iia esophageal squamous cell carcinoma after Ivor-Lewis esophagectomy? Akhtar J, et al. Ann Surg Oncol. Jan;21(1):315-21, 2014.
2. Overexpression of stathmin1 in the diffuse type of gastric cancer and its roles in proliferation and migration of gastric cancer cells. Jeon TY, et al. Br J Cancer. Feb 16;102(4):710-8, 2010.
3. A cohort study of STMN1 expression in colorectal cancer: body mass index and prognosis.Ogino S, et al. Am J Gastroenterol. Aug;104(8):2047-56, 2009.