

Mobility Safety Tips

- Lightweight transport chairs are great for travel, plus save your spouse or caregiver's backs wherever you go.
- It is NOT safe to use your rollators as transport chairs!
- "Glowing" canes are available making it easier to walk at night. Also available are folding canes for part-time use.
- Using a wheelchair not properly fit to your specific needs can result in worsening condition. Trust Comfort Mobility to make sure your chair is perfect for you!

We offer a wide variety of different mobility equipment to suit your personal needs.

If you are unsure of what is the best option for you, contact your doctor, occupational therapist, nurse or call us for an assessment.

Other Recommendations:



Single Point Cane



Quad Cane



Forearm Crutches



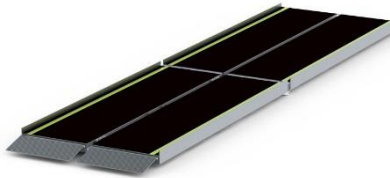
Folding Walker



4-wheel Power Scooter



Wheelchair Ramp



Rollator



Folding walkers with wheels



Manual Wheelchair



Powerchair



Manual Tilt/Recline Wheelchair



Manual Wheelchair

