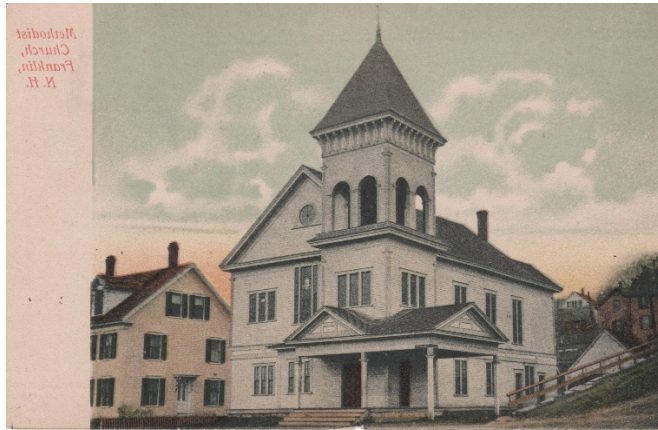


Methodist Church 88 Franklin Street and Lot across the Street.



The other church on the street was the Methodist, at the corner of School and Franklin Streets. By 1860's the Methodist church was built and was being shared with the Freewill Baptist congregation. They stayed together until 1871, the church was purchased from the Baptists and they went on to build their own church on Church and Franklin. In the early 1890's the church had to be turned 90 degrees toward Franklin Street when School Street was altered to pass over a bridge for the railroad. In April of 1894 the Methodist's building had to be moved to make way for the tracks of The Franklin and Tilton Railroad, so new foundations had to be laid. A belfry and a covered porch added much to the appearance of the building. A steel ceiling with arches greatly improved the interior of the church as did extensive painting. In 1896 an addition was built to house a pipe-organ which had been obtained from Dartmouth College through the kindness of their organist, Alvah G. Sleeper, formerly of Franklin, and the choir loft was moved at that time to the front of the auditorium. Meanwhile, on December 20, 1894, the church building was rededicated. Most recently a victim of a dwindling congregation, it was put up for sale in 2025.

On the opposite corner from the Methodist Church, was the St. Mary's School. From an early 20th century postcard view of the school (on the left side of frame, you can just make out one of the columns of the Methodist Church's front entrance and the railing for the School Street hill sidewalk). The Sisters of St. Mary came here to take charge of the new parochial school. The land upon which St. Mary's School was built, on the southwest corner of Franklin and School Streets was bought from Rufus Burleigh and a building was removed to make way for the two-story brick structure. St. Mary's was ready for occupancy in 1896. When it opened it had four teachers and an enrollment of 220 pupils. The classic brick structure was replaced in 1964 with a new school building on Elkins Street. Where the original stood is today an empty paved lot.