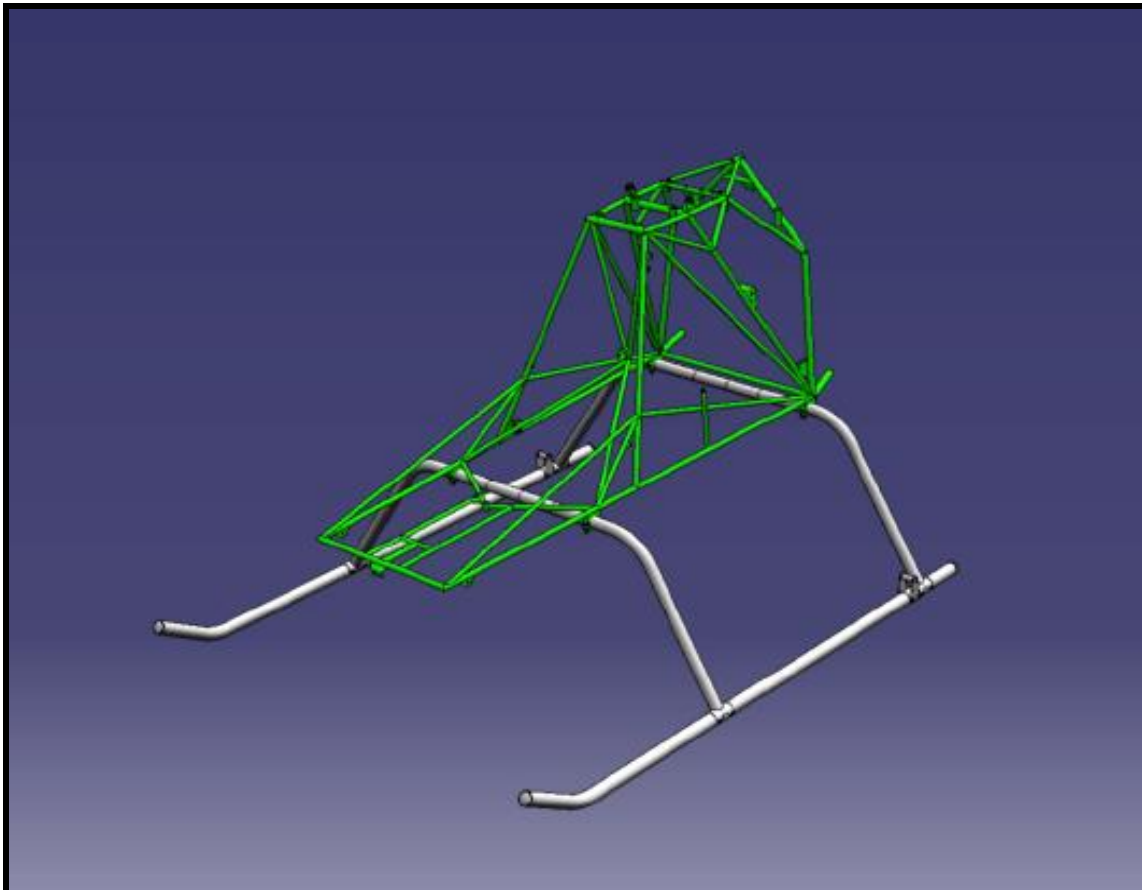


Phase 1: Landing Gear installation

The necessary parts required to assemble the landing gear and its installation to the airframe are large and easily identified when unpacking from the shipping crate. Small parts are in cardboard box 12 and the bolts and nuts are shrink wrapped in box 18.










Note: read the construction phase carefully as some parts such as step 1 may already be assembled to assist shipping

CAD image



Phase 1: Landing Gear installation

Parts and other components

PARTS	DESCRIPTION	CODE	QTY.	PACK
	Airframe	CH7T_01.000.0.0	1	1
	Right Forward Cross Tube	CH6B_03.001.0.0	1	11
	Left Forward Cross Tube	CH6B_03.002.0.0	1	11
	Right Rear Cross Tube	CH6B_03.003.0.0	1	11
	Left Rear Cross Tube	CH6B_03.004.0.0	1	11
	Skid	CH6B_03.006.0.0	2	11
	Transport Wheel Support	CH6B_03.007.0.0	2	12
	Transport Lever	CH6B_03.015.0.0	2	16
	Transport Wheel	CH6B_03.015.6.0	2	16

TOTAL PHASE 1 PARTS: 13

Necessary tools

- Wrench 3/8"
- Wrench 7/16"

Other necessary elements

- Torque wrench 2 to 5 Nm

Phase 1: Landing Gear installation

Assembly order

Step 1- Landing gear assembly

Cross tube connection

Connect both Forward Cross Tubes with the Forward Guide Tube.

Insert the Forward Guide Tube into the Left Forward Cross Tube and connect it to the Right Forward Cross Tube.

You must bolt in the following order:

- A- Bolt AN3-17A
- B- Washer AN960-10L
- C- Cross tube
- D- Guide tube
- E- Guide tube
- F- Cross tube
- G- Washer AN960-10L
- F- Nut AN365-1032

Apply a torque of 3 Nm over the nut of the attachment bolt.

In the following image you can observe the guide tube placed in one of the cross tube of the landing gear.



Fig. 1

Connect both rear cross tubes by the rear guide tube.

Insert the Guide Tube in the Left Cross Tube and connect it according to the following order:

- A- Bolt AN3-17A
- B- Washer AN960-10
- C- Cross tube
- D- Guide tube
- E- Guide tube
- F- Cross tube
- G- Washer AN960-10

Phase 1: Landing Gear installation

F- Nut AN365-1032

Apply a torque of 3 Nm on the nut of the attachment bolt.



Fig. 2

Assembly of the Cross Tubes to the Skids

NOTE

The cross tubes and the skid parts have matching numbers that must coincide as they are originally hand drilled. i.e – match 1 with 1 and 2 with 2 etc.



Fig. 3

Assemble both ends of the Forward Cross Tube to the Skids as shown in the picture according to the following order:

- A- Bolt AN3-22A
- B- Washer AN960-10L
- C- Cross tube base
- D- Skid
- E- Cross tube base
- F- Washer AN960-10L
- G- Nut AN364-1032

Phase 1: Landing Gear installation

Apply a torque of 3 Nm on the nut of the attachment bolts



Fig. 4

Assemble both ends of the rear cross tubes to the skids like shown in the picture according to the following order:

- A- Bolt AN3-22A
- B- Washer AN960-10L
- C- Cross tube base
- D- Skid
- E- Cross tube base
- F- Washer AN960-10L
- G- Nut AN364-1032

Apply a torque of 3 Nm on the nut of the attachment bolts.

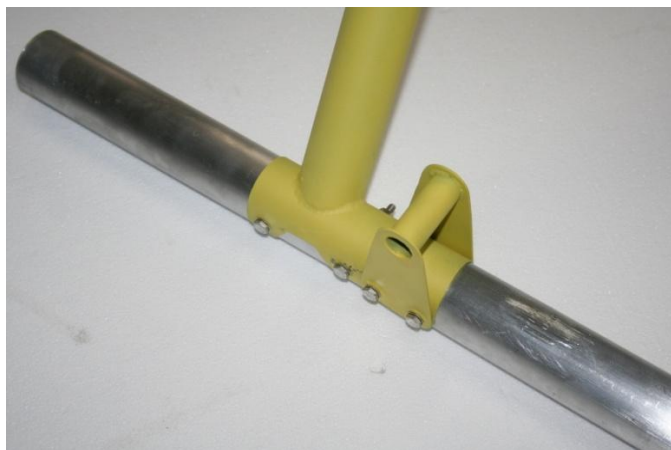


Fig. 5

Phase 1: Landing Gear installation

Step 2- Mounting Landing Gear to Airframe

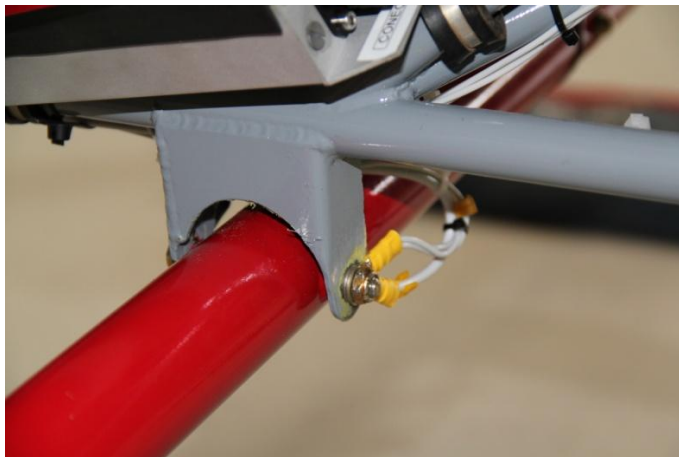


Fig. 6

In the Left Forward Cross Tube and Right Rear Cross Tube follow the same sequence below, but use an AN4-26A bolt with its corresponding self locking nut. This is because in phase 12 a ground cable from the electrical system must be placed there. Mount Landing Gear to Airframe in to the four points, Right Forward Cross Tube and Left Rear Cross Tube, according to the following sequence from front to backside.

- A- Bolt AN4-25A (RH side), AN4-26A (LH side)
- B- Washer AN960-416L
- C- Airframe support
- D- Cross tubes
- E- Cross tubes
- F- Airframe support
- G- Washer AN960-416L
- H- Nut AN364-428

Apply a torque of 7,8 Nm on the nut of the attachment bolts.

Step 4- Assembly of Transport Wheel Support to the Skids.

Assemble Transport Wheel Support to the skids as shown on the picture according to the following order from outside to inside:

- A- Bolt AN3-23A
- B- washer AN960-10L
- C- Brackets
- D- Skid
- E- Bracket
- F- Washer AN960-10L
- G- Nut AN364-1032

Phase 1: Landing Gear installation

Apply a torque of 3 Nm on the nut of the attachment bolts.

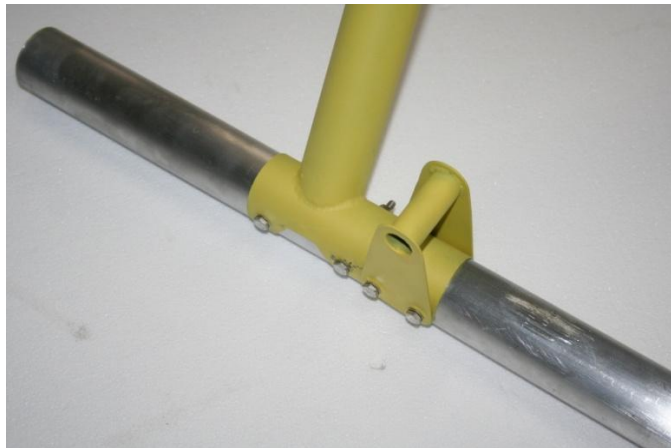


Fig. 7

Step 5- Transport wheels assembly

Assemble both wheels with their corresponding washers and pins.



Fig. 8