

Mouse Anti-Inhibin Alpha [R1]: MC0170, MC0170RTU7

Intended Use: For Research Use Only

Description: Inhibin is a dimeric glycoprotein hormone from TGF-beta family made up of alpha and beta subunits. It inhibits the production of follicle-stimulating hormone from pituitary while actively stimulates the production of FSH. It is suggested that inhibin may act as a gonadal tumor suppressor.

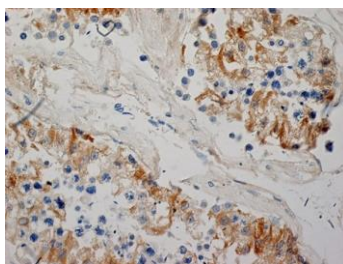
Specifications:

Clone: R1
 Source: Mouse
 Isotype: IgG2a
 Reactivity: Human, bovine, sheep
 Localization: Cytoplasm
 Formulation: Antibody in PBS pH7.4, containing BSA and $\leq 0.09\%$ sodium azide (NaN₃)
 Storage: Store at 2°- 8°C
 Applications: IHC, WB
 Package:

Description	Catalog No.	Size
Inhibin Alpha Concentrated	MC0170	1 ml
Inhibin Alpha Prediluted	MC0170RTU7	7 ml

IHC Procedure*:

Positive Control Tissue: Testis, ovary
 Concentrated Dilution: 25-150
 Pretreatment: EDTA pH8.0, 15 minutes using Pressure Cooker, or 30-60 minutes using water bath at 95°-99°C
 Incubation Time and Temp: 30-60 min @ RT
 Detection: Refer to the detection system manual
 * Result should be confirmed by an established diagnostic procedure.



FFPE human testis stained with anti-Inhibin Alpha using DAB

References:

1. The inhibin/activin signalling pathway in human gonadal and adrenal cancers. Marino, F.E. et al., Mol Hum Reprod. 20 (12): 1223-37, 2014.
2. Estrogen-producing endometrioid adenocarcinoma resembling sex cord-stromal tumor of the ovary: a review of four postmenopausal cases. Katoh, T. et al., Diagn Pathol. 7: 164, 2012.
3. Testicular failure and male infertility in the monogenic Mulibreymanism disorder. 9. Karlberg, S. et al., J Clin Endocrinol Metab. 96 (11): 3399-407, 2011.
4. Pancreatic serous microcystic adenoma with extensive oncocytic change. Akiyama, T. et al., Pathol Int. 59 (2): 102-6, 2009.

Doc. 100-MC0170
Rev. A