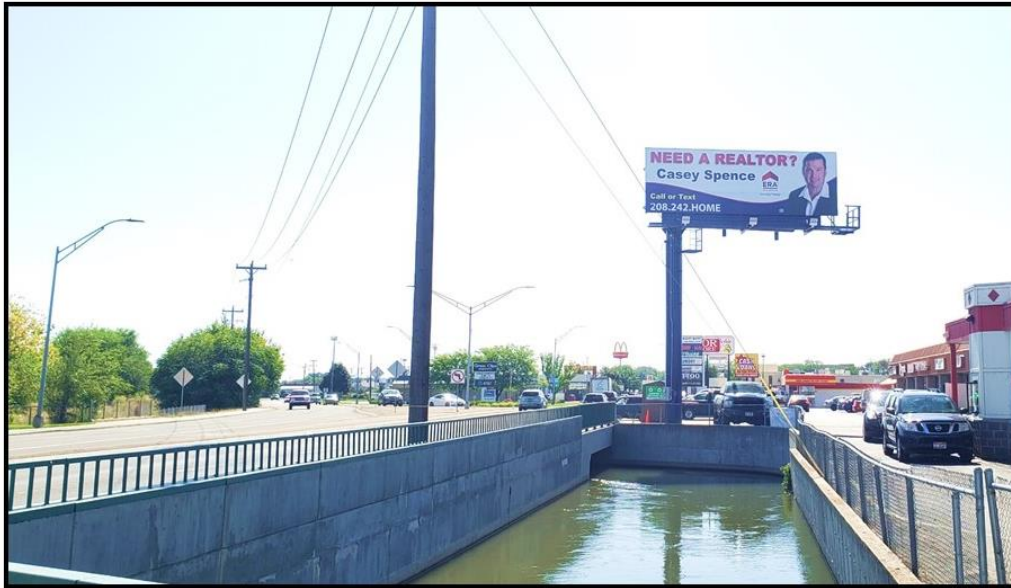




BILLBOARD SIGN 38R NAMPA, ID



Fantastic right-hand read on a popular alternative route out of east Nampa, heading toward the downtown business district.

- Sign: #38R
- Location: 215 Caldwell Blvd, Nampa, ID
- Lat/Long: 43.587741,-116.577417
- Size: 10' x 30'
- Illuminated: Yes
- Face/Read: Southeast/Right-hand
- Weekly Impressions: 89,853

