

# ADULT LITERACY & GED PROGRAM

## WEEKLY SCHEDULE

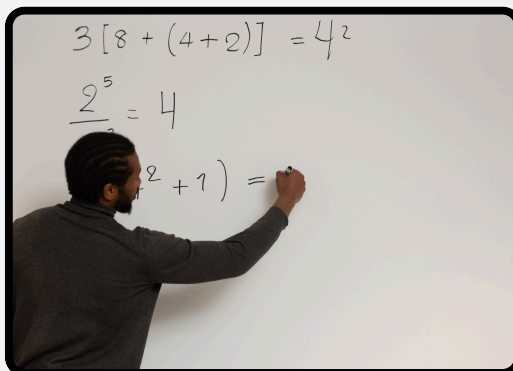
**MONDAY: 10AM-12PM | 5PM-7PM**

**TUESDAY: 10AM-12PM**

**THURSDAY: 5PM-7PM**



Tutoring



Contact Us

 (904)660-2157



4736 AVE. B JACKSONVILLE. FL  
32209 (EDUCATION BUILDING)