

Rabbit Anti-PSMA/FOLH1 Recombinant [MD105R]: RM0168, RM0168RTU7

Intended Use: For Research Use Only

Description: Prostate-specific membrane antigen (PSMA), also known as folate hydrolase 1(FOLH1), is a type II transmembrane glycoprotein belonging to the M28 peptidase family. PSMA has two enzymatic activities, one as a prostate-specific integral membrane folate hydrolase and the other as a carboxypeptidase. Anti-PSMA labels normal prostate epithelial cells and prostate tumor cells. Although the expression of PSMA in neovasculature of a variety of solid tumors has been reported, PSMA expression is highly restricted to the prostate. It is a useful marker for prostate tumors. In prostate cancer, overexpression of PSMA is correlated with high tumor grade, non-diploid tumors, and advanced tumor stage. It can be used as an effective predictor for tumor progression in prostate cancer

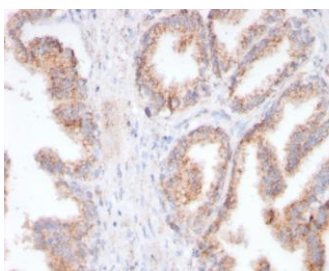
Specifications

Clone: MD105R
 Source: Rabbit
 Isotype: IgG
 Reactivity: Human
 Immunogen: Recombinant human PSMA protein fragment aa 232-433
 Localization: Cytoplasm, membrane
 Formulation: Purified antibody in PBS pH7.4, containing BSA and ≤ 0.09% sodium azide (NaN3)
 Storage: Store at 2°- 8°C
 Applications: IHC
 Package:

Description	Catalog No.	Size
PSMA/FOLH1 Recombinant Concentrated	RM0168	1 ml
PSMA/FOLH1 Recombinant Prediluted	RM0168RTU7	7 ml

IHC Procedure*

Positive Control Tissue: Prostate, prostate cancer
 Concentrated Dilution: 50-200
 Pretreatment: Tris EDTA pH9.0, 15 minutes using Pressure Cooker, or 30-60 minutes using water bath at 95°-99°C
 Incubation Time and Temp: 30-60 minutes @ RT
 Detection: Refer to the detection system manual
 * Result should be confirmed by an established diagnostic procedure.



FFPE human prostate ca. stained with anti-PSMA using DAB

References:

1. Comparative analysis of monoclonal antibodies against prostate-specific membrane antigen (PSMA). Tykvart J, et al. Prostate. Dec;74(16):1674-90, 2014.
2. Co-delivery of PSA and PSMA DNA vaccines with electroporation induces potent immune responses. Ferraro B, et al. Hum Vaccin. Jan-Feb;7 Suppl:120-7, 2011.
3. Comparative study of PSMA expression in the prostate of mouse, dog, monkey, and human. Aggarwal S, et al. Prostate. Jun 15;66(9):903-10, 2006.

Doc. 100-RM0168
Rev. B