

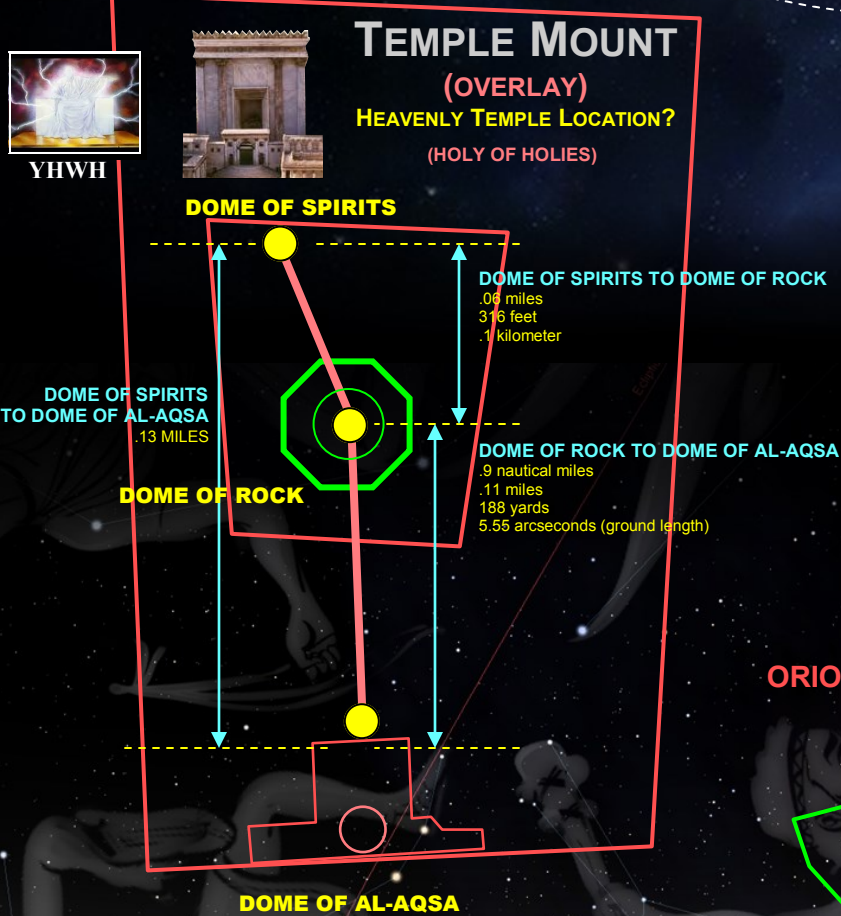
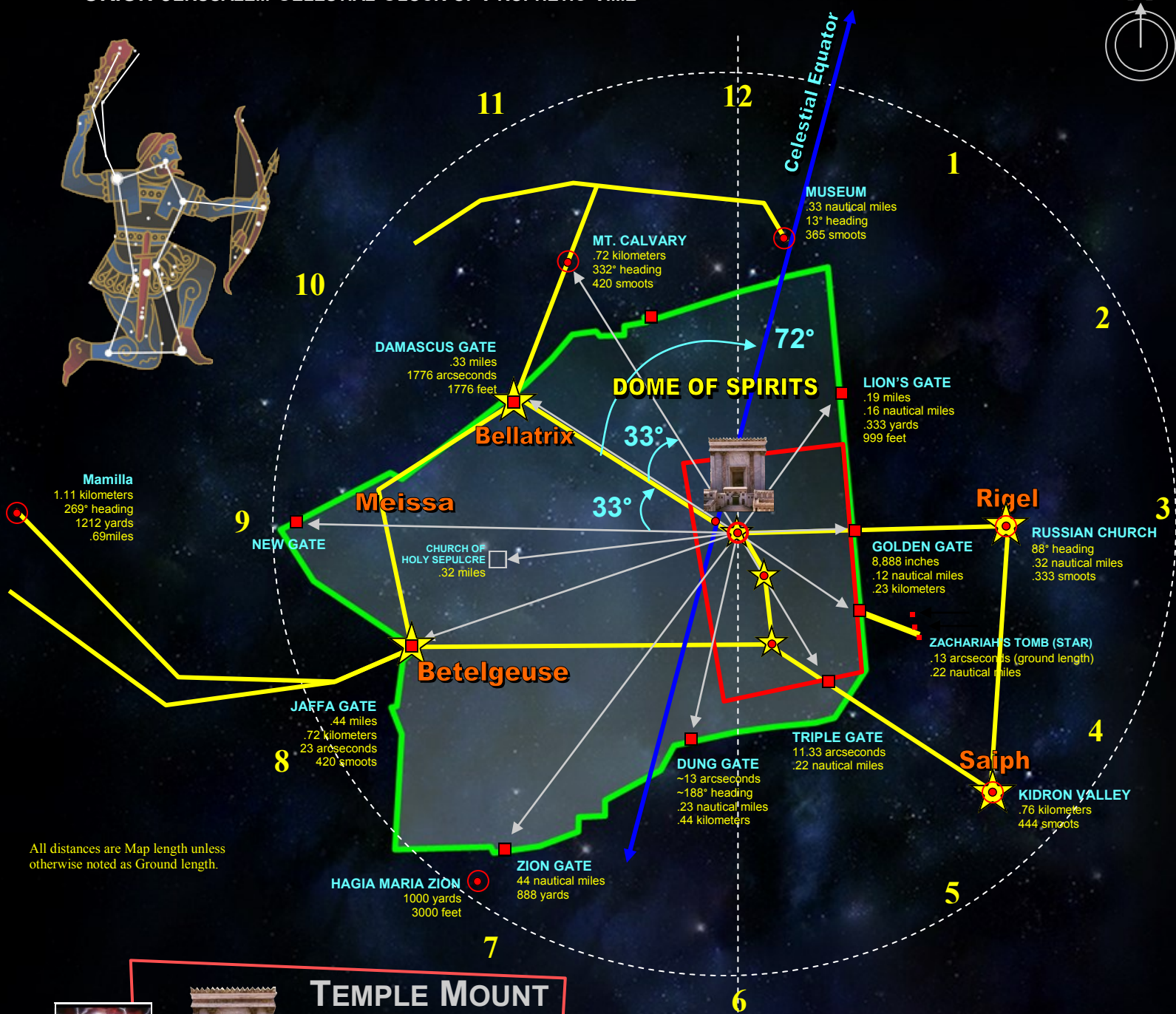
THE GATES OF ORION

HEAVENLY ZION PATTERN OF EARTHLY JERUSALEM

The purpose of these charts is to illustrate that the ORION constellation almost approximates the Gates of Jerusalem layout. It appears that the Earthly Mt. Zion, the City of the King is laid out in astronomical and mathematical precision. It is no accident where the Gates are placed or where certain buildings or 'Domes' are erected. These alignments are taking into consideration the curvature of Earth and slight angular adjustment to reflect the approximate proportion of the star to gate correlation. These illustrations are based on the premise that there is an overlay of ORION ley-lines, it appears that the focal point in the Dome of the Spirits strongly suggests is the actual spot of the Holy of Holies. It is from this point that the 1st and 2nd Temples stood and the 3rd will also, if the ORION configuration is indeed the blueprint of the Celestial Zion on Earth. It is thus from this point of origin that ORION depicts a 'prophetic celestial clock' of time intervals that are thus also aligned with the ORION ley-lines and angles. From the Dome of the Spirits, several coordinates are made to the respective Gates with some amazing distance numerical values that are seen in the Bible, astronomy and mathematics. Does ORION encompass the True Heavenly ZION of YHWH or a similar layout in Heaven?

The Dimensions of Zion

ORION-JERUSALEM CELESTIAL CLOCK OF PROPHETIC TIME



SOME OBERVATIONS

The northern direction serves as the 12 o'clock station. The Galactic Equator bisects just to west of the place of the Holy of Holes at the tip of ORION's Bow at the 72nd degree angle. The Jaffa Gate ~8pm, corresponds to Betelgeuse and the Citadel of David at 9pm. This street leads to the Arch of Wilson adjacent the Wailing Wall. The Damascus Gate is at the 10pm station and corresponds to the angle of the Tomb of Zechariah in the Kidron Valley. The Golden Gate is at the 3pm station that is aligned with Rigel. The Arrow of ORION precisely bisects the place that this chart strongly suggests is the actual place of Mt. Calvary where the Cross was placed and Christ was pierced through with an 'arrow' or lance.

The Temple Mount's 3 Domes correspond to the Orion 3-star belt in angle and proportion. Although the Dome of Al-Aqsa is not precisely pinpointed, what determines the star-to-structure correlation is the length of the building that was a Church before the Muslim occupation of the Mount. With such angles and distance correlations, it lends incredible support to the supposition that the coming 3rd Temple has to be geometrically in line with the sacred geometry of the entire ORION Gate theory. This would also validate that the spot of the Crucifixion was at the 33rd degree from the Galactic Equator-Damascus Gate angle.

ORION-JERUSALEM CELESTIAL STAR GATES

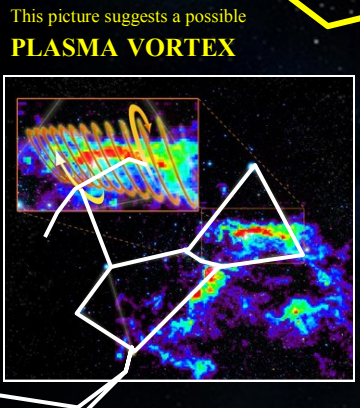
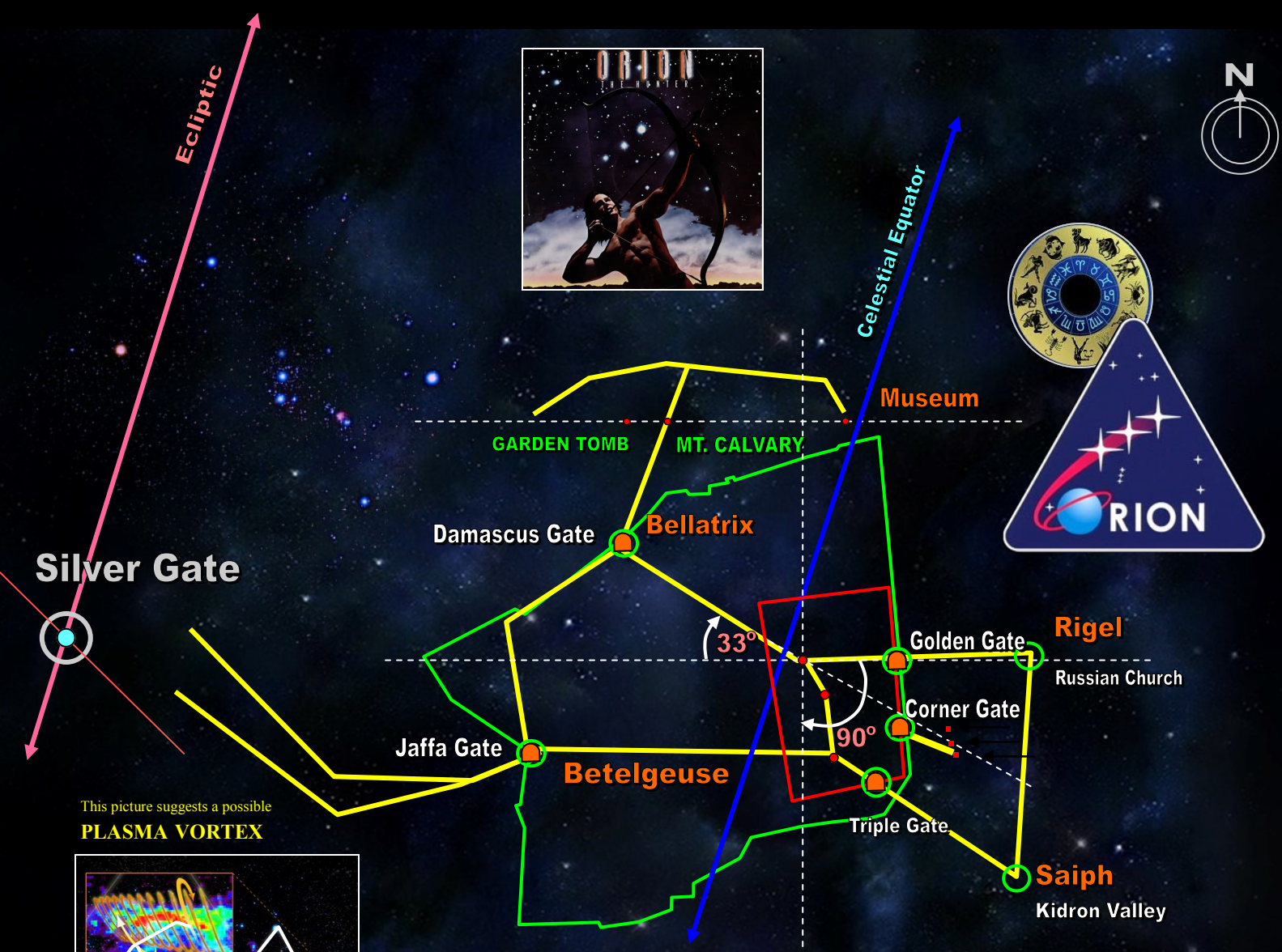


Based on the ORION-Jerusalem overlay of sacred astronomical alignments and angles, the 3rd Temple necessitates that it be geometrically and mathematically located at the Dome of the Spirits.

THE GATES OF ORION

HEAVENLY ZION PATTERN OF EARTHLY JERUSALEM

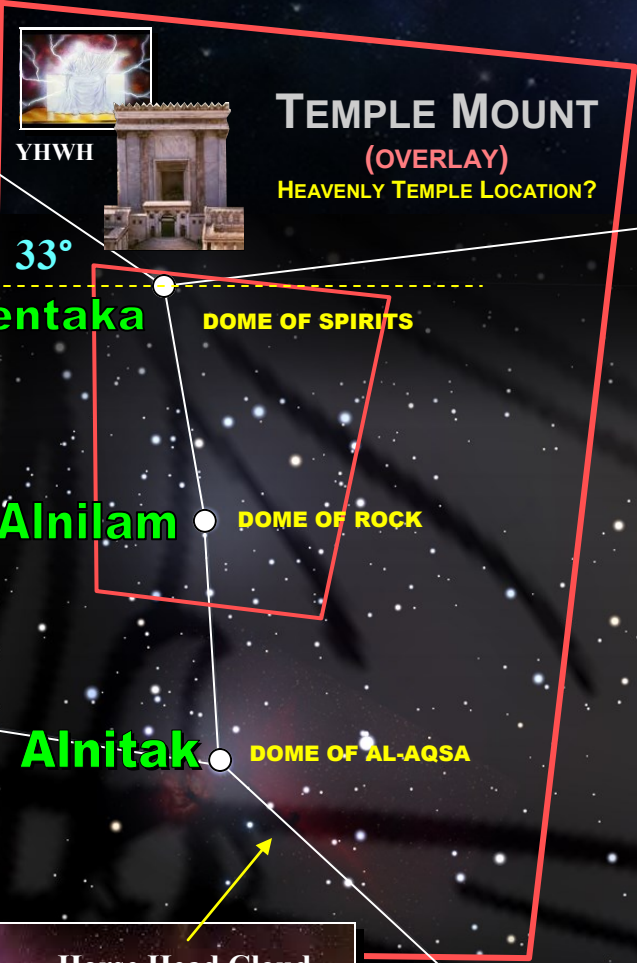
Those in power to have outlined Jerusalem's grid had and/or have this esoteric knowledge. Many ancient cities and places of sacred worship also mirror such constellations but what makes Jerusalem unique is that according to the Bible, the Creator placed His Name and Presence in the Temples given over to the nation of Israel. This Temple was a model or facsimile of the true type in Heaven. Moreover, the location was not just any random location but was mathematically and geometrically assigned based on the dimensions of ORION. ORION is where the Silver Gate is situated. It is astonishing that the ancient peoples of Earth's earliest civilizations knew exactly the dimensions of the constellations and even the degree within nebulas as in the case of the Orion Nebula. According to the Mazzaroth, ORION is the 'hunter', the 'Coming Prince' that takes on the 'wrath' and judgment of Taurus head on. He is the Messiah promised of YHWH to Eve in the Garden of Eden and subsequently reiterated through various affirmations in Covenants with certain people, i.e., Abraham, Isaac and Jacob. Conversely, the corruption and power of opposites has ORION as the archetype of the very same Christ that came, as in the AntiChrist that is to come. He is Nimrod, Prometheus, Mercury, etc.



The Bible declares that the Creator of the Universe formed the Heavens and the Earth. The constellations from Earth's perspective resound with the Creator's geometry and mathematics in principles like pi, phi and symmetry. The Orion constellation has 2 of the most spectacular nebulas in the known Universe. They are the Orion Nebula and the Horse Head Cloud. Many actually allude this 'head' to be that of a 'serpent' or Dragon. The outer city has street angles aligned with pyramids, serpents or dragons. The ORION constellation has these 2 features, a Serpent Cloud and a Conical Pyramid within the Orion Nebula itself. All these celestial factor along with the major ORION star configurations are found incorporated in the dimensions and angles of Jerusalem's Gates, the Earthly 'ZION'.

GATES OF JERUSALEM

-  LION
-  GOLDEN
-  TRIPLE
-  DUNG
-  ZION
-  JAFFA
-  NEW
-  DAMASCUS
-  HEROD



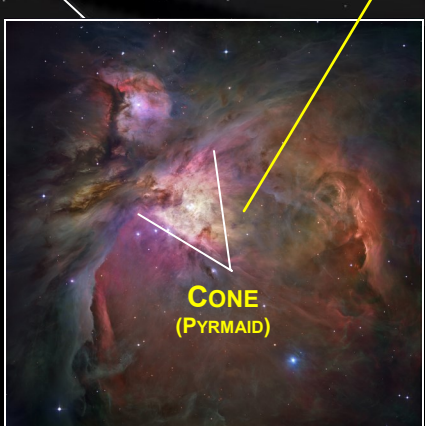
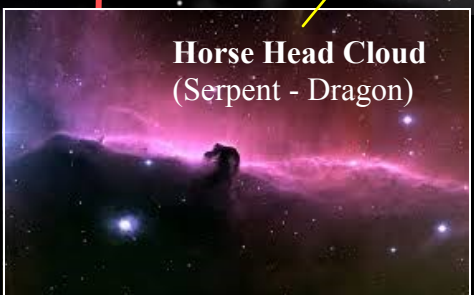
NEW JERUSALEM GATES (12)

NORTH
Judah
Issachar
Zebulon

EAST
Ruben
Simeon
Gad

SOUTH
Ephraim
Manasseh
Benjamin

WEST
Dan
Asher
Naphtali



THE GATES OF ORION

HEAVENLY ZION PATTERN OF EARTHLY JERUSALEM

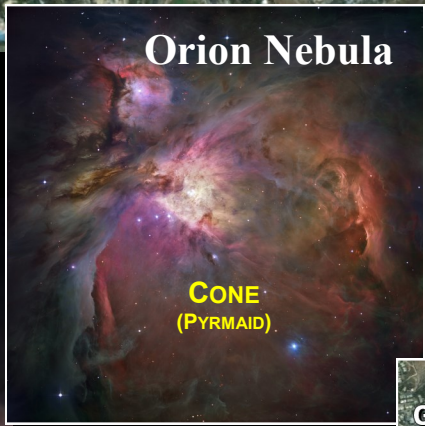
The Temple Mount is orientated based on the Orion angles, not the Earth's cardinal points, specifically the 3-star belt alignment. The first of the city's angles are configured to include the major Gates and fortifications. As it stands now, there are either Mosques, Churches or Synagogues at selective geometric intersections or distances that are mathematically repeating on different levels. The chart below approximates the Old Jerusalem ley-lines with the constellation of ORION superimposed. The Gates match the major ORION star angles. The constellation of ORION is also directly associated with the Great Pyramid, as in the one in Giza. One of the shafts or alignments from the King's Chamber's directly aligns in the middle star in the belt of ORION. Jerusalem also has this the Great Pyramid configuration just west of the Old City but with unsuspecting 'serpents and hexagrams to define it. Interestingly the ORION Nebula does have a 'pyramid' shaped anomaly called the cone. ORION also has a very distinctive Horse Head cloud but many ascribe it as being a 'dragon' or serpent. This serpent configuration in Jerusalem corresponds to the one that also is functioning as the Ascending or Grand Gallery of the Great Pyramid on the Jerusalem street ley-lines.



The Heavenly Temple - Jerusalem - Zion - Orion

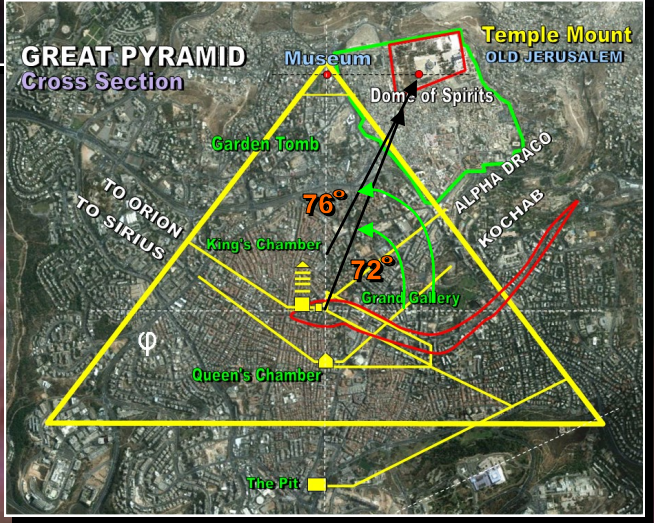


THRONE OF YHWH



When the Great Pyramid outline is superimposed onto the Orion Nebula Cone, at an 90 degree rotation, a compressed Hexagram emerges that also is configured within the Pyramid outline of Jerusalem' street grid.

There are many who believe that ORION is the gateway to the actual dwelling place of the Creator. If ORION is a 'gate' or portal into such a dimension, it would explain why in particular, Jerusalem is layout with such exacting attributes. The city's gates correspond to the major stars, the Temple Mount 3-Domes corresponds to the 3-star belt alignment.



Orion Nebula (close-up)

ORION

Alnitak

Sirius

CONE (PYRAMID)

GREAT PYRAMID

The direction of the Pyramid's apex corresponds to the exact direction of the Orion Nebula's Conical.

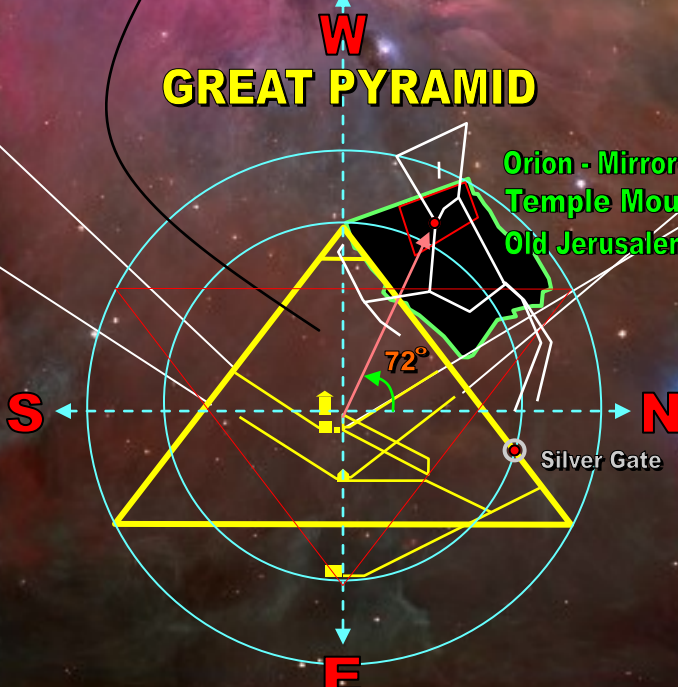
POLARIS (North Star)

LITTLE DIPPER

KOCHAB

DRACO

Orion - Mirrored Temple Mount Old Jerusalem



DIVINE ALIGNMENTS

If the Great Pyramid pattern is encircled in proportion to the angles, the Old City of Jerusalem walls will encompass the slope of the Great Pyramid starting from the Pyramid apex and to the shaft alignment to the North Star angle of Polaris in the Little Dipper. Conversely, the ORION alignment of the Great Pyramid due South will be in the same proportion of the Old City when the ORION configuration is flipped and rotated 90 degrees. The alignment perfectly matches the overall Great Pyramid layout of the Great Pyramid superimposed on the greater Jerusalem city grid. When the North Star is made the focal point of the 4 celestial cardinal directions, the 'Serpent' Draco depicts the snake on the pole that Moses lifted up in the Wilderness and Jesus said He to must be lifted up i.e., on the Cross.